



\*Rendering shown above is a project under consideration

# 240 GRAHAM AVENUE

**Office Space For Lease**

240 Graham Avenue is a high quality office building located on the designated skywalk system in Winnipeg's Central Business District. The building is in close proximity to Portage and Main, the MTS Centre, the SHED (Sports, Hospitality, and Entertainment District) and all central business district amenities.





Located at the center of Winnipeg's business district.

The Cargill Building is an important link in the city’s enclosed climate-controlled pedestrian walkway. This 8 storey modern building has several on-site amenities, and a beautifully modernized main lobby, skywalk, and elevators.

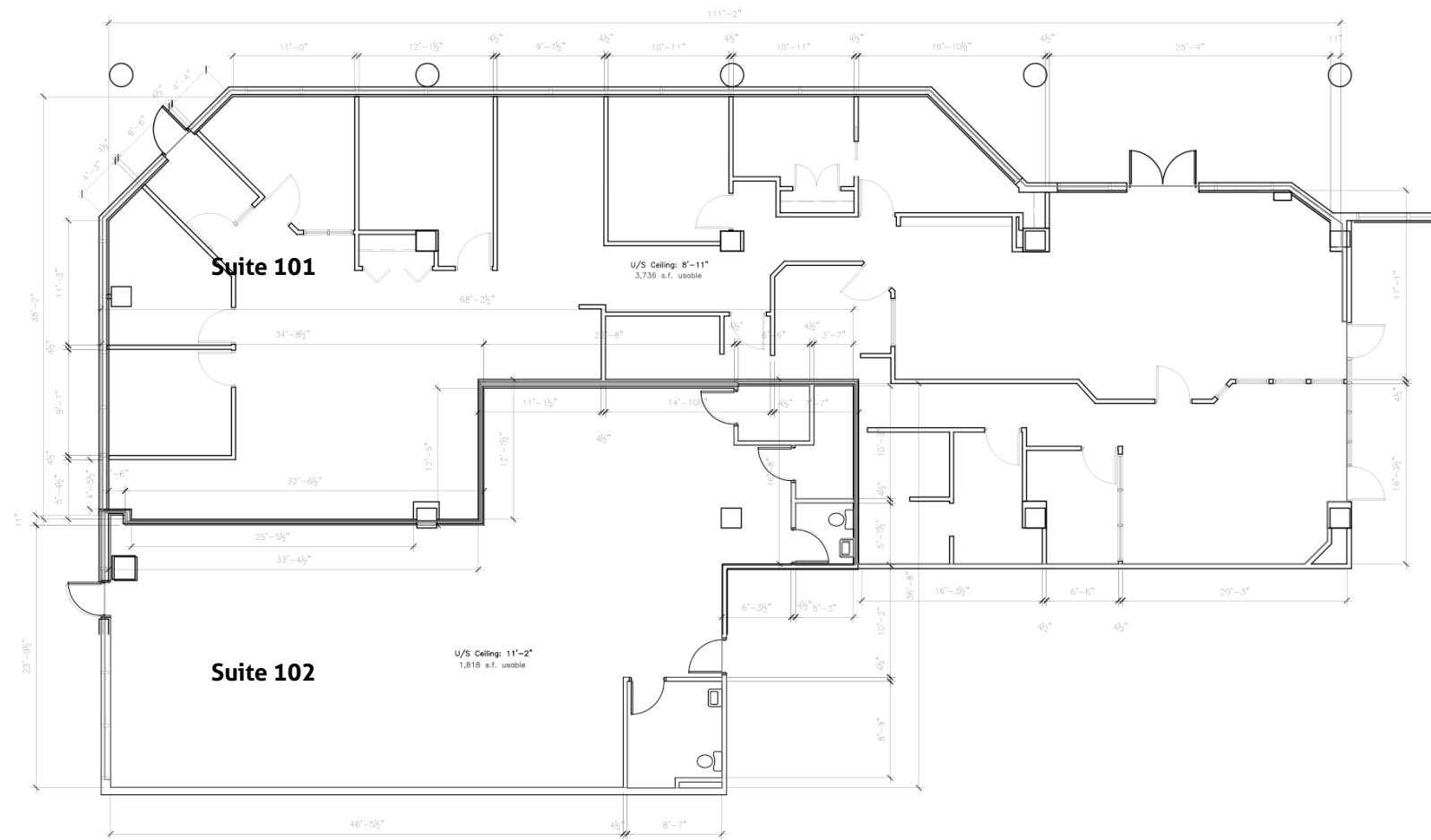


Suite	Size	Rate	Additional (2025)	Comments
101	4,212 SF	\$18.00	\$18.42	NW corner of main floor; street access; excellent exposure for restaurant or retail use
102	1,900	\$18.00	\$18.42	Open space with accessible washroom
210	3,923 SF	\$18.00	\$18.42	On skywalk; developed office with private offices and boardroom
260	2,583 SF	\$18.00	\$18.42	Finished office space
282	1,144 SF	\$18.00	\$18.42	Existing Improvements
296	1,150 SF	\$18.00	\$18.42	Open space; SW corner; on the Skywalk
500	23,672 SF	\$18.00	\$18.42	Developed office; full floor
604	10,168 SF	\$18.00	\$18.42	Existing improvements
608	2,500 SF	\$18.00	\$18.42	Developed office; 4 offices and open space; south facing
614	2,484 SF	\$18.00	\$18.42	Developed office; meeting room, 4 offices and open space; south facing
718	1,111 SF	\$18.00	\$18.42	Existing improvements
814	1,400 SF	\$18.00	\$18.42	Open space; south facing
818	2,324 SF	\$18.00	\$18.42	Existing improvements contiguous with suite 826
826	9,594 SF	\$18.00	\$18.42	“Shell” condition, ready for development; north facing

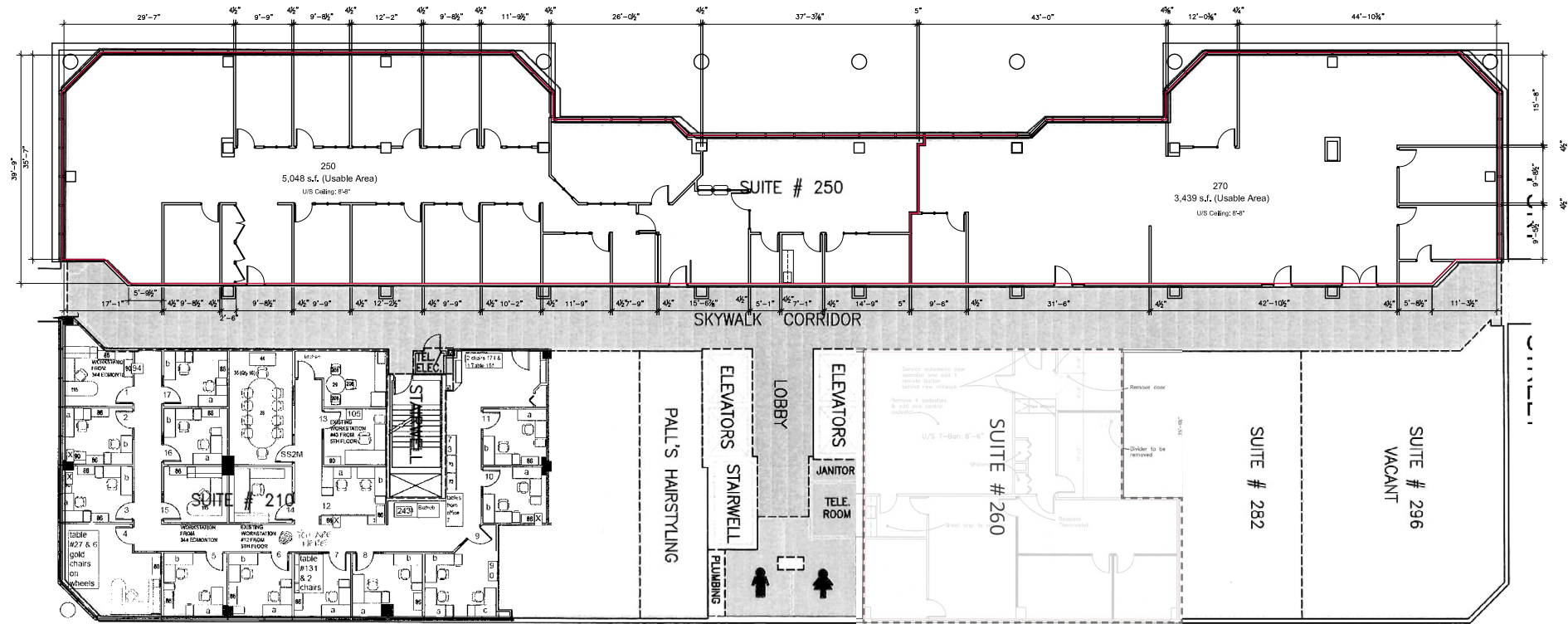


# FLOOR PLANS

First Floor

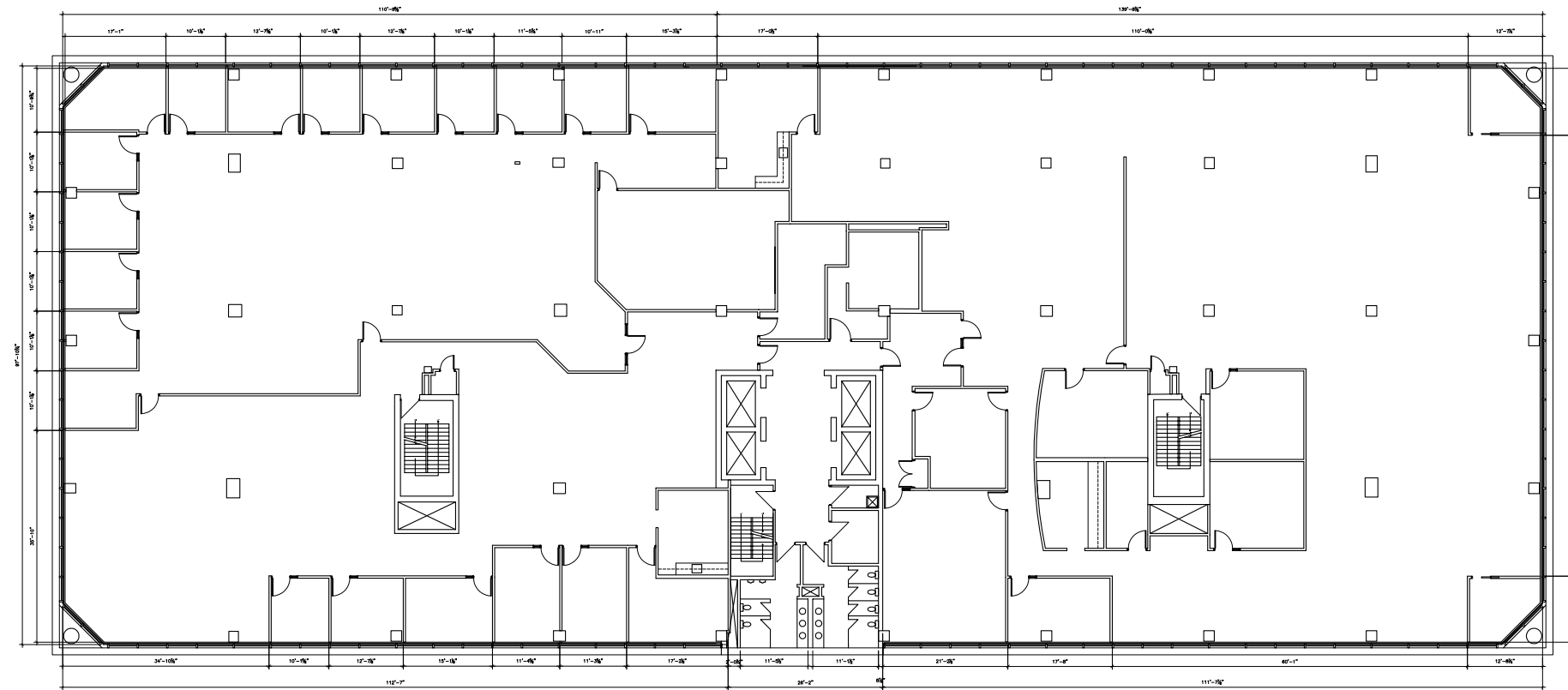


Second Floor

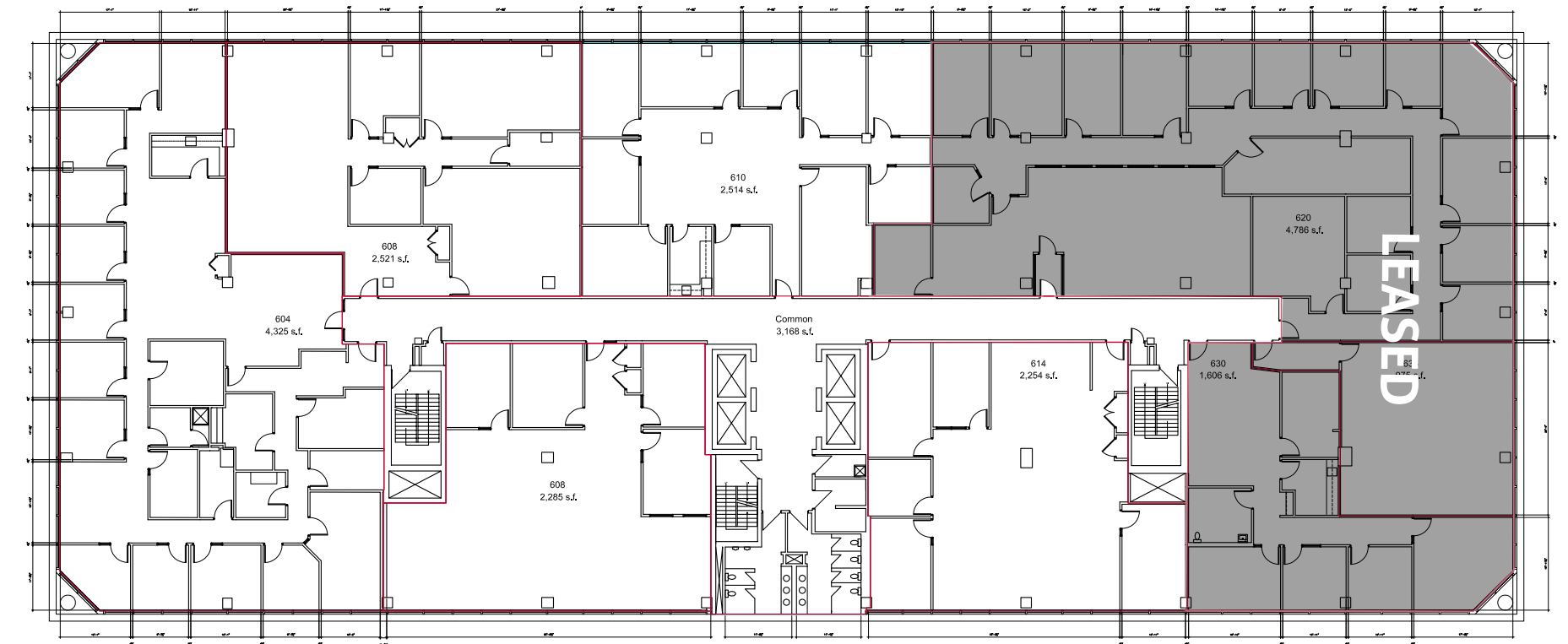


# FLOOR PLANS

## 5th Floor

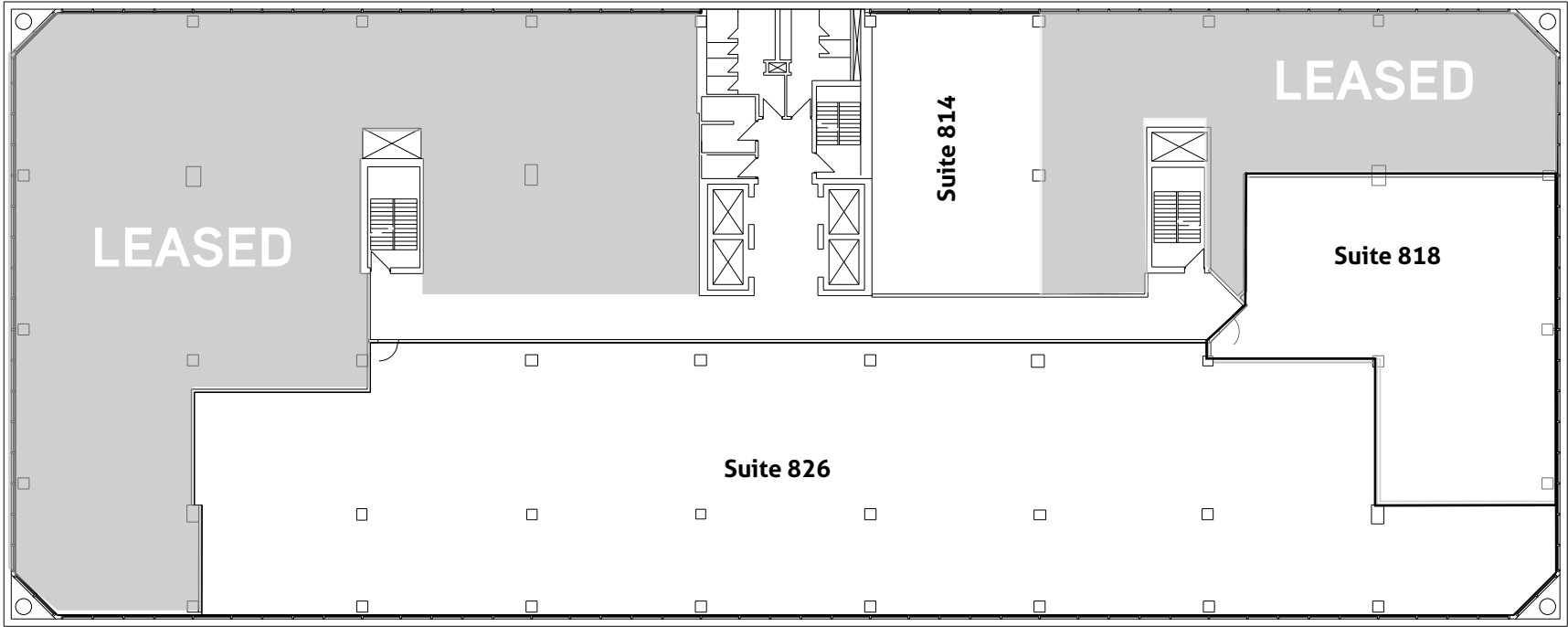


## 6th Floor



# FLOOR PLANS

8th Floor

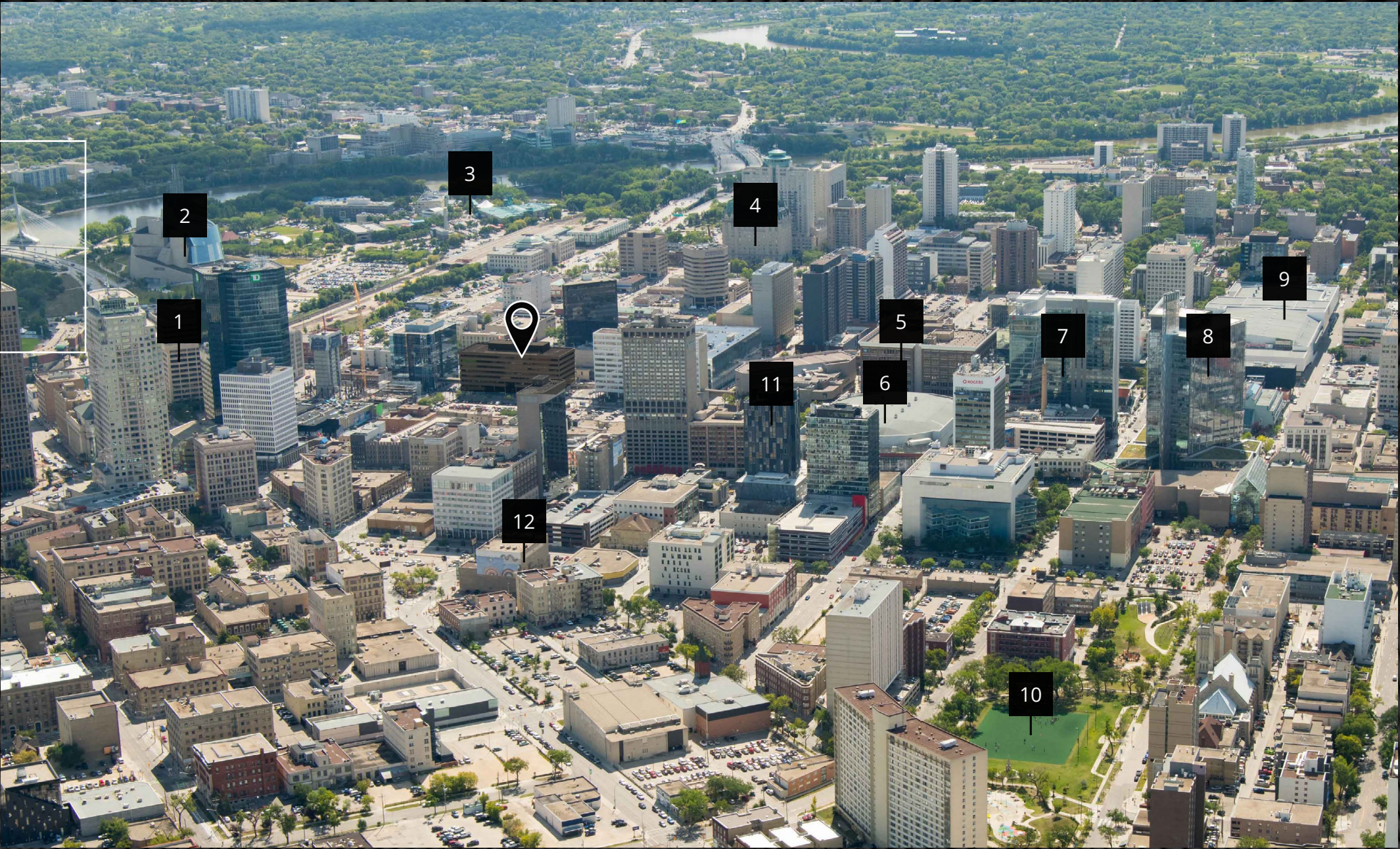




# DOWNTOWN WINNIPEG

Downtown Winnipeg, with its vibrant atmosphere and thriving business community, offers an ideal location for an office space. The area boasts a unique blend of historical charm and modern infrastructure, making it an attractive destination for both businesses and employees.

The diverse range of restaurants, cafes, and entertainment options nearby create a dynamic work-life balance, fostering creativity and collaboration among team members. The central location provides convenient access to major transportation hubs, facilitating easy connections with clients and partners.



- |    |                                 |
|----|---------------------------------|
| 1  | Portage & Main                  |
| 2  | Canadian Museum of Human Rights |
| 3  | The Forks                       |
| 4  | Fort Garry Hotel                |
| 5  | Cityplace                       |
| 6  | Canada Life Centre              |
| 7  | True North Square               |
| 8  | Manitoba Hydro Building         |
| 9  | RBC Convention Centre           |
| 10 | Central Park                    |
| 11 | alt Hotel                       |
| 12 | Burton Cummings Theatre         |





With one of the largest floor plates in Winnipeg ( $\pm 24,000$  SF), skywalk connectivity, on-site amenities and central location, 240 Graham Avenue certainly punches above its weight in the Winnipeg Class B office market. Owned by Investors Group Real Property Fund, the building boasts a stable ownership group committed to enhancing the property.

Commencing in 2020, management has committed to a renovation program to upgrade all the common corridors of the building. On-site management, operations and security offer tremendous quality and accommodations for a wide variety of office users.



## Recent Upgrades

2017 Upgrade of the 7th Floor Common Space  
2019 Upgrade of the 8th Floor Common Space  
2020/2021 Proposed Main Floor/Skywalk initial concepts provided herein

## HVAC

Heat is provided by two, 48 HP high efficiency gas fired hot water boilers and two 50 ton water chillers. The perimeter is heated or cooled throughout the year by heat pumps and the interior is supplied with fresh air from two air handling Suites. The building is equipped with a DDC energy/management system which controls most of the mechanical systems.



## Telecommunication Service Providers

The building is currently serviced by MTS, Shaw and Telus.

## Building Awards

The building has attained BOMA Certified Silver.

## Green Initiatives

Incandescent fixtures have been switched to LEDs and fluorescent fixtures have been upgraded to T8s. Recycling Program currently includes: office paper, newspaper, cardboard, bottles, plastic, cans, and batteries. Management is currently researching options to have electronic recycling available. Currently installing variable frequency drive controls on both air handling units.

## Skywalk System

240 Graham Avenue is directly connected to Winnipeg's Skywalk System which is comprised of over 2.4 kilometers of indoor climate controlled walkways.



\*Rendering shown above is a project under consideration

## Generator

A 75 KW KVA generator with a transfer switch is available to support emergency safety equipment, lighting and elevator service.

## Parking

73 indoor underground parking stalls, and 35 outdoor stalls.

## Maintenance & Security

The building features on-site maintenance.  
Manned security is stationed: 5:00 a.m. to 1:00 a.m.

## On-site Amenities

Main floor tenant-only gym  
Tim Horton's located at the corner of Graham & Fort Street  
On-site bicycle storage





\*Rendering shown above is a project under consideration

# CALL US FOR MORE INFO

## **Sean Kliewer**

Senior Vice President

+1 204 926 3824

[sean.kliewer@colliers.com](mailto:sean.kliewer@colliers.com)

## **Jordan Bergmann**

Vice President

+1 204 954 1793

[jordan.bergmann@colliers.com](mailto:jordan.bergmann@colliers.com)

Copyright © 2025 Colliers International. This document has been prepared by Colliers International for advertising and general information only. Colliers International makes no guarantees, representations or warranties of any kind, expressed or implied, regarding the information including, but not limited to, warranties of content, accuracy and reliability. Any interested party should undertake their own inquiries as to the accuracy of the information. Colliers International excludes unequivocally all inferred or implied terms, conditions and warranties arising out of this document and excludes all liability for loss and damages arising there from. This publication is the copyrighted property of Colliers international and/or its licensor(s). Copyright © 2025 Colliers International

