

the kahanoff centre



community building



LEASING INFORMATION

We are a Community Building

The Kahanoff Centre is Calgary's exclusive office property for non-profit organizations. Our mantra is Community Building and our Kahanoff Centre tenant partners are leading organizations, bringing their missions to life each day.

Perhaps the more remarkable feature of our property is the chance opportunities among community organizations. The Kahanoff Centre team facilitates many of these conversations through Lunch and Learn events, Leaders' Forums, and other social opportunities. And when the rigors of the workday require a reprieve, Decidedly Jazz Danceworks/DJD offers year-round classes and outstanding artistic and performance productions in its DJD (located in the Kahanoff Centre) gallery, studios and theatre.

The Kahanoff Centre is home to numerous community builders including Calgary Counselling Centre, CCVO, Calgary Foundation, United Way, Kids Up Front, Nature Conservancy Canada and more.

For a full listing of our tenant/community partners, please visit thekahanoffcentre.com.





HOURS

Monday - Friday
8:00am to 4:00pm



ADDRESS

105 12 Avenue SE
Suite #900
Calgary, AB T2G 1A1



PHONE

P: [\(403\) 206-4844](tel:(403)206-4844)
F: [\(403\) 263-7101](tel:(403)263-7101)



EMAIL

Leasing:
admin@tkcca.org

Working at Kahanoff

The Kahanoff Centre is attractively positioned in close proximity to numerous nearby amenities. Located at 105 12 Avenue SE, in Calgary's Victoria Park district, the Kahanoff Centre is conveniently close to downtown and major routes and services. Along with numerous building amenities, our tenant partners enjoy Kahanoff's walkable neighbourhood and quick access to restaurants, food halls, and more.

Space planning at the Kahanoff Centre can accommodate a range of open and office-only configurations, small meeting rooms to large board/conference rooms, team lounges and kitchens, reception vestibules and lobbies, tech rooms, and other office uses. The Kahanoff Centre also offers non-profit organizations opportunities at our K-HUB, a purpose-built co-working space with a variety of rental options. Designed to foster collaboration and community building, K-HUB is ideally suited to individuals and small teams seeking alternatives to traditional office leasing.

To learn more about leasing at the Kahanoff Centre, please contact Tenant Relations.



TOTAL TENANTS



COMMUNITY
INTERACTIONS



TOTAL STAFF



Feature Amenities at the Kahanoff Centre

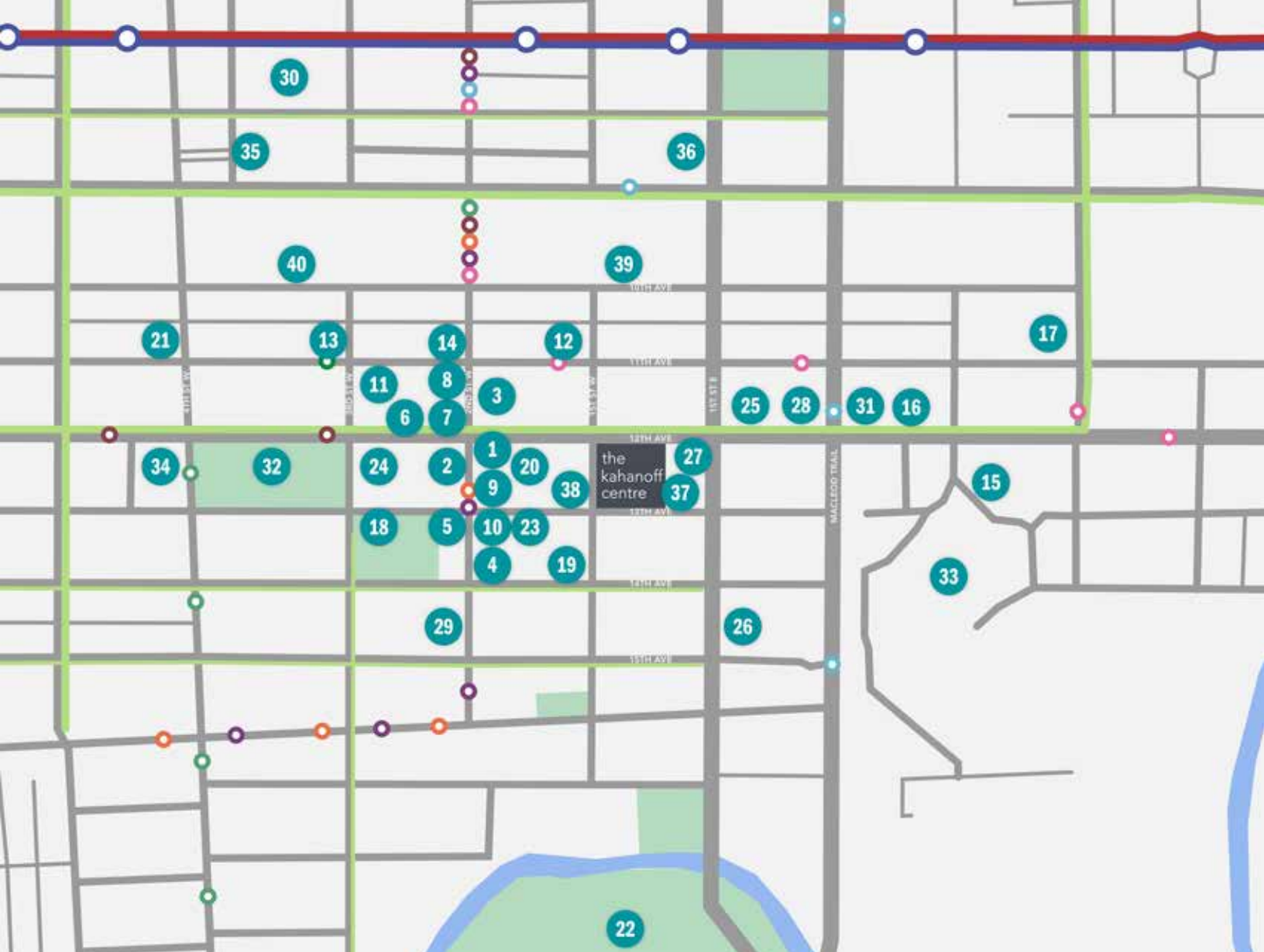


- Churchill Daycare
- Main Floor Conference Rooms
- Access to a 220-seat theatre
- Secure and heated underground parkade
- On-property building security
- Outstanding location with excellent vehicle, transit, cycle, pedestrian and LRT access
- Co-working spaces at K-HUB



- **A community network of not-for-profits**





LEGEND

Kahanoff Centre

Commuting

- Roadways
- Bike Lanes
- Red Line / Blue Line LRT

Bus Stops

- Route 6 - Killarney / 26 Ave SW
- Route 7 - Marda Loop South
- Route 10 - City Hall / Southcentre
- Route 24 - Ogden
- Route 90 - Bridgeland / UofC
- Route 449 - Eau Claire / Parkhill

Fitness

- 18 Haultain Tennis Courts
- 19 HotShop Hot Yoga
- 20 Anytime Fitness
- 21 F45 Training
- 22 MNP Community & Sports Centre

Accommodations

- 23 Hotel Arts
- 24 Fairfield Inn by Marriott

Shopping/Retail

- 25 Sunterra Market
- 26 Shoppers Drug Mart
- 27 Esso Gas Station
- 28 5 Vines Wine
- 29 O'Connors
- 30 The CORE

Restaurants

- 1 Yellow Door Bistro
- 2 Sweet Relief Pastries
- 3 Starbucks
- 4 Proof Cocktail Bar
- 5 First Street Market
- 6 St. James Corner Irish Pub
- 7 Ten Foot Henry
- 8 Leopold's Tavern
- 9 Deville Coffee
- 10 The Beltliner
- 11 Central Taps + Food
- 12 Pizza Italiano
- 13 Vintage Chophouse and Tavern
- 14 Foreign Concept
- 15 Cardinale
- 16 ZCREW Cafe
- 17 Village Ice Cream

Parks

- 11 East Victoria Park
- 12 Central Memorial Park

Landmarks

- 13 BMO Centre
- 14 Sheldon M. Shumir Health Centre
- 15 Calgary Tower
- 16 Glenbow Museum

Childcare

- 17 Kids @ Churchill Park Child Care
- 18 Kido Care

+15 Access

- 19 Palliser Tower Parkade
- 20 City Centre Parkade

211,582
SQ. FT.

BUILDING SIZE

A

BUILDING CLASS

1981
& 2016

YEAR BUILT

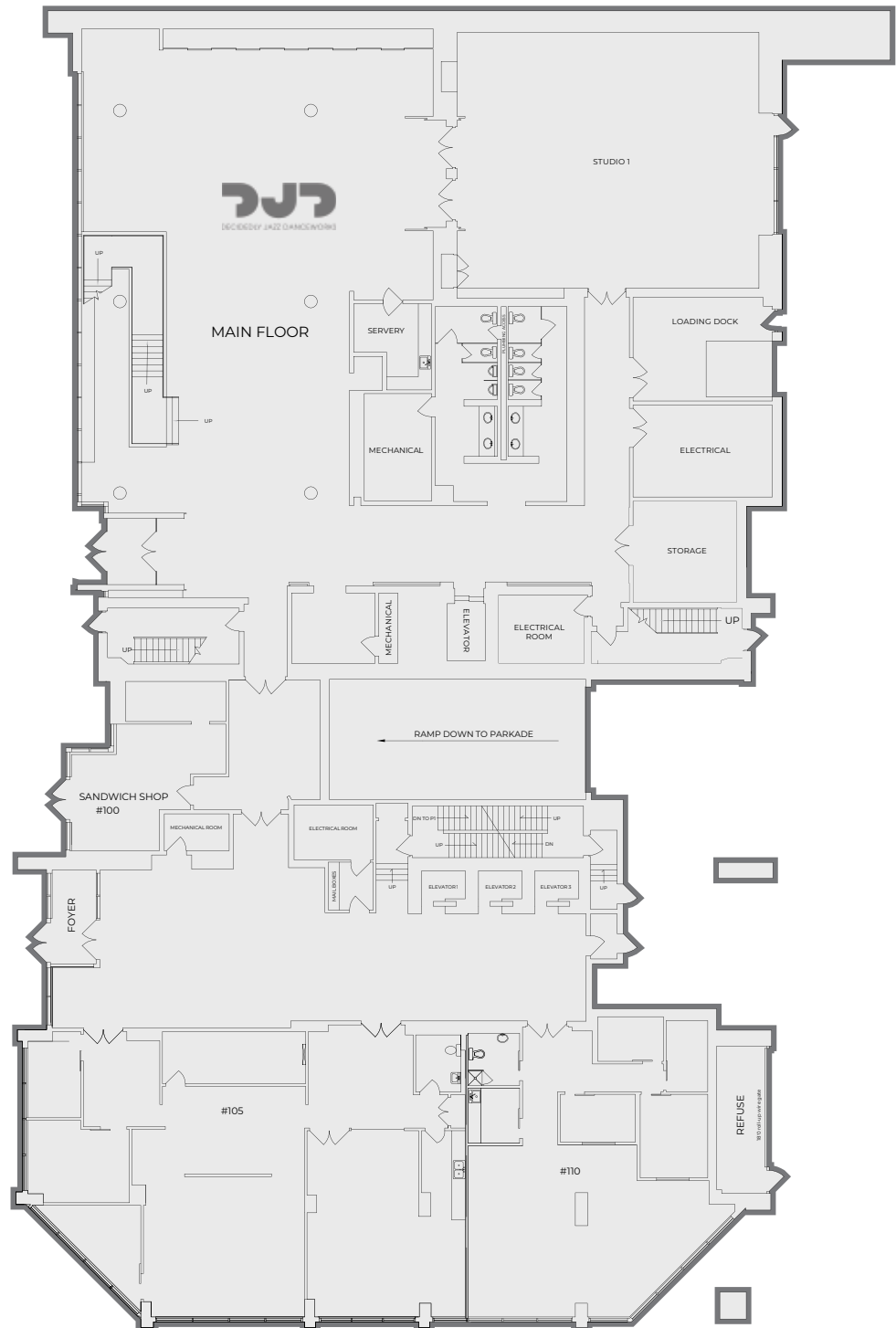
12

NUMBER OF FLOORS

20,000
SQ. FT.

TYPICAL FLOOR SIZE

Kahanoff Centre Main Floor

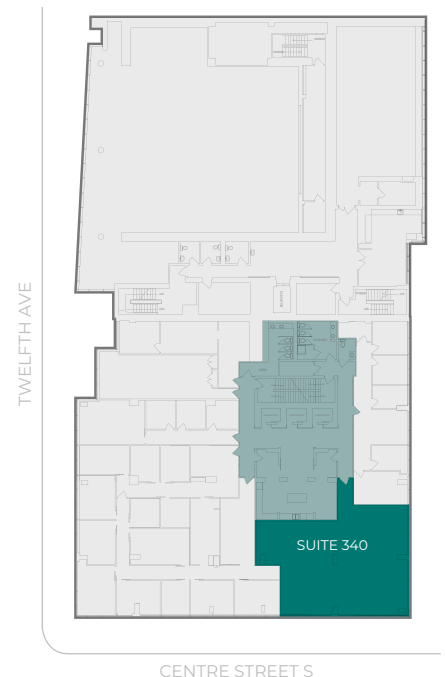
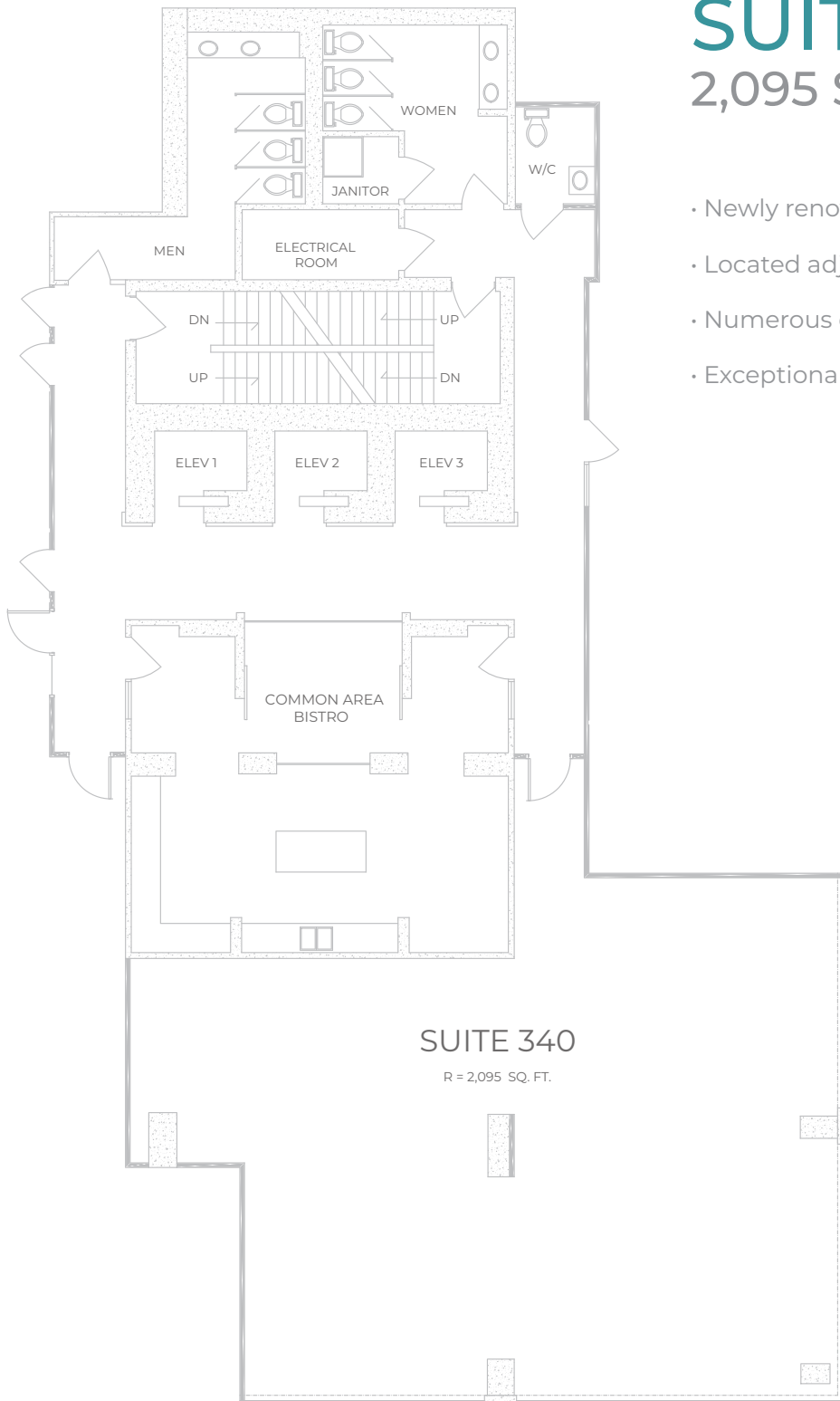


Kahanoff Centre

SUITE 340

2,095 SQ. FT.

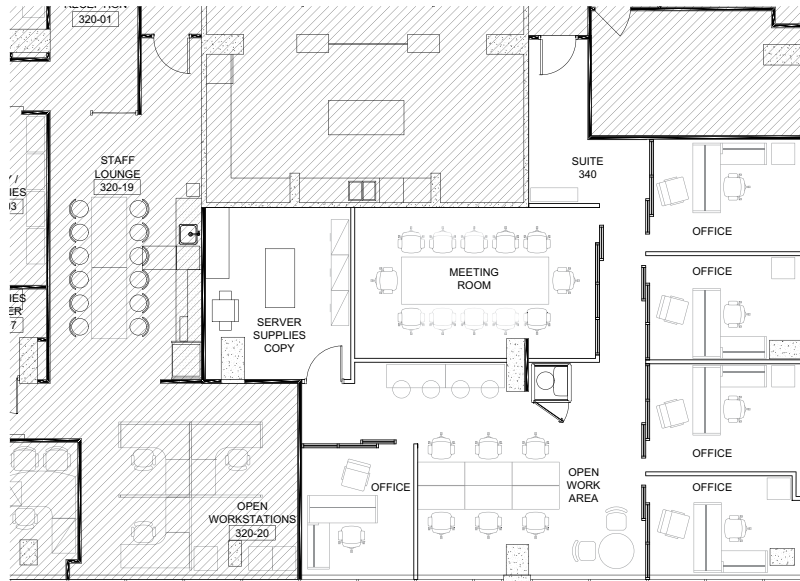
- Newly renovated
- Located adjacent to common area bistro
- Numerous configuration options
- Exceptional natural light and views



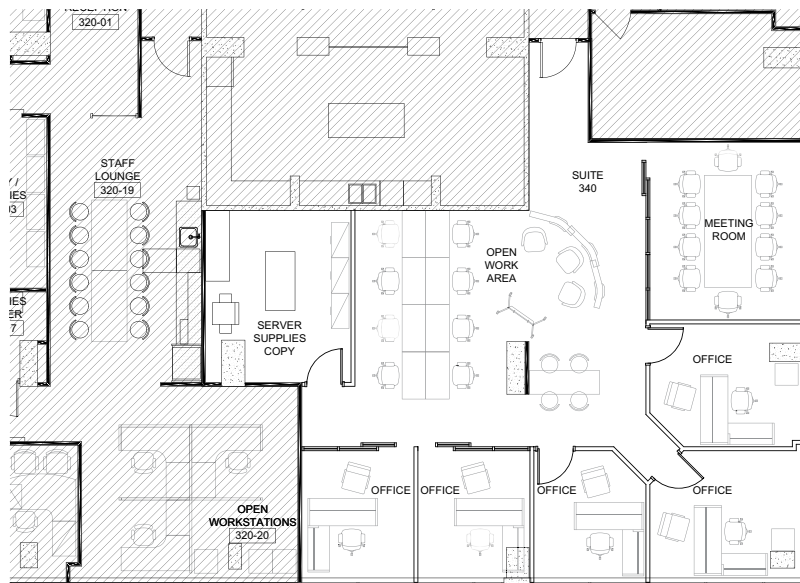
Kahanoff Centre

SUITE 340

Concept Plans



A



B







