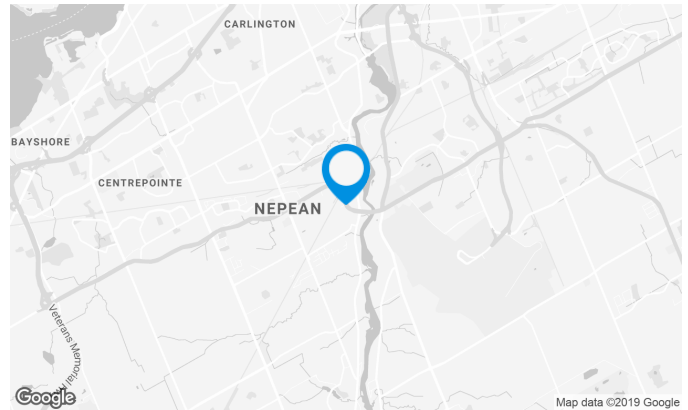


## Building characteristics

TOTAL LEASING AREA	71,610 ft <sup>2</sup>
NUMBER OF FLOORS	5
ELEVATORS	2
SPRINKLERS	Yes
HVAC HOURS	Building accessible to tenants 24/7 with access card; otherwise open 7:00 a.m. to 6:00 p.m.
SECURITY	A security system card swipe control access to the building. Intercom system in place. Security cameras.

## BUILDING ACCESSIBILITY

OUTDOOR PARKING	263
-----------------	-----



**Justin Levine**

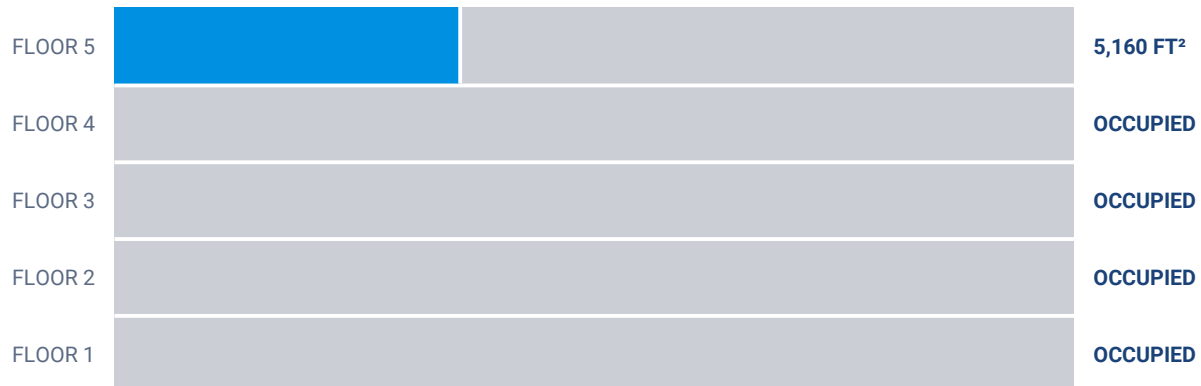
LEASING MANAGER  
LEASING - OFFICES, ONTARIO AREA

**T** 613 234-4416 #8428

**C** 613 323-1377

**E** JUSTIN.LEVINE@COMINAR.COM

**Superficie locative disponible de 5,160 ft<sup>2</sup>**

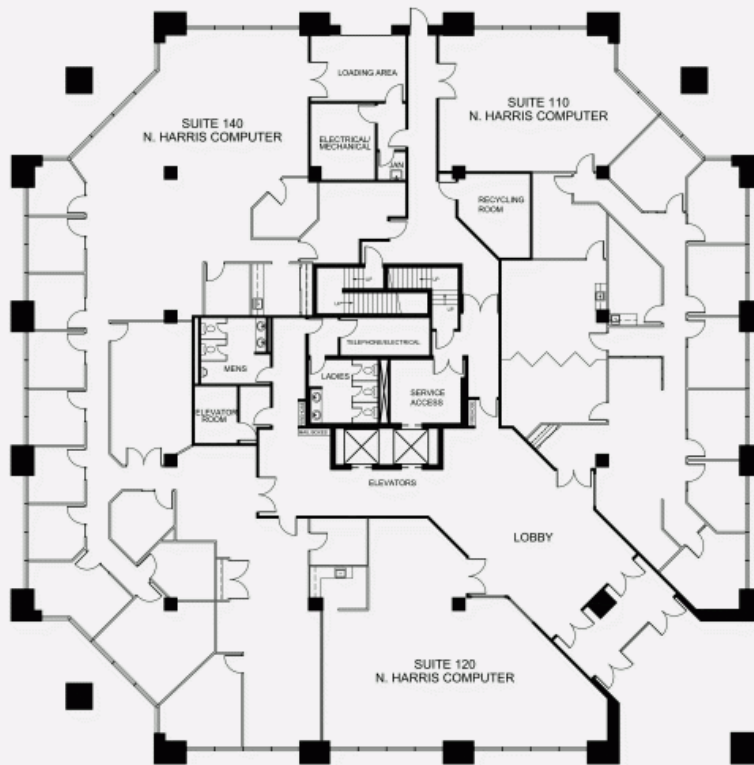


**List of available offices**

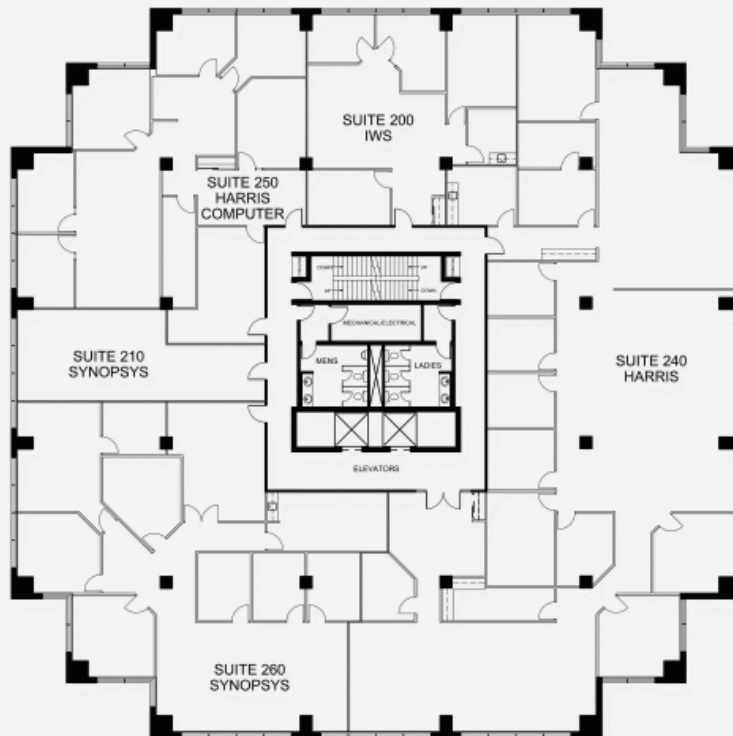
SUITE	FLOOR	AVAILABILITY	AREA
Suite #530	5	June 2019	5,160 ft <sup>2</sup>



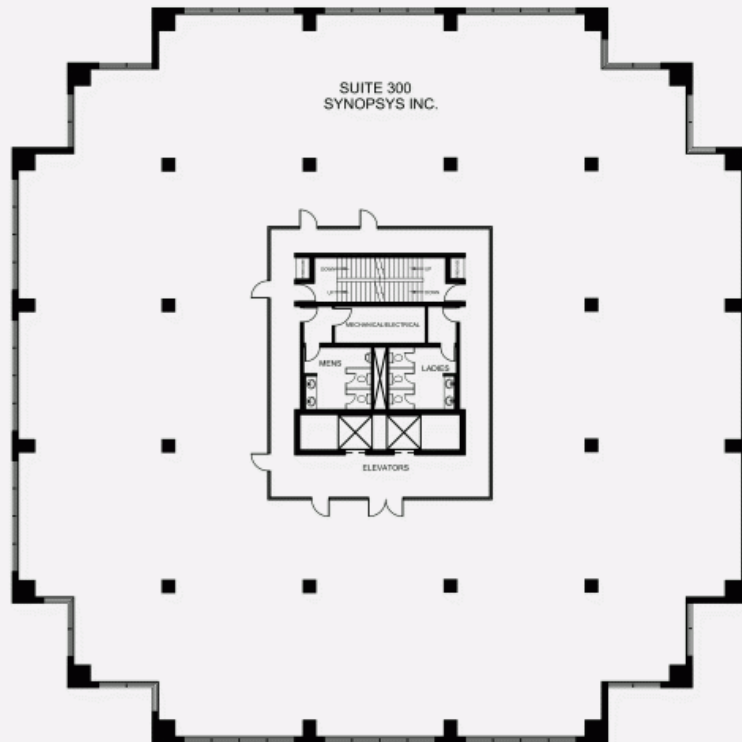
FLOOR 1 PLAN



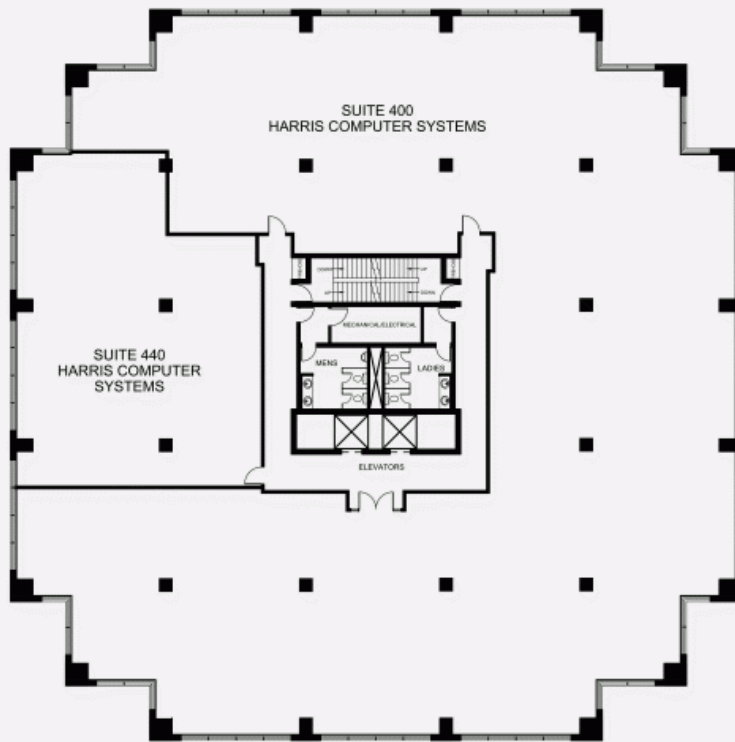
FLOOR 2 PLAN



FLOOR 3 PLAN



FLOOR 4 PLAN



FLOOR 5 PLAN

