

FEATURES

- EXCELLENT CENTRAL LOCATION, WITH EASY ACCESS TO MACLEOD, BLACKFOOT, GLENMORE
- WALKING DISTANCE TO CHINOOK CENTRE AND LRT
- UPGRADED MAIN LOBBY AND COMMON AREAS

Lori Suba
President & Broker
(403)850-4248
lsuba@scoutrealestate.ca

Laurae Spindler
Vice President & Associate
(403)471-4871
lspindler@scoutrealestate.ca

The information is intended for informational purpose only and should not be relied upon by recipients hereof. Scout Real Estate Ltd. neither guarantees, warrants or assumes any responsibility or liability with respect to the accuracy, correctness, completeness, or suitability of, or decisions based upon or in connection with, the information. The Information may change and any property described herein may be withdrawn from the market at any time without notice or obligation of any kind on the part of Scout Real Estate Ltd.

PROPERTY INFORMATION

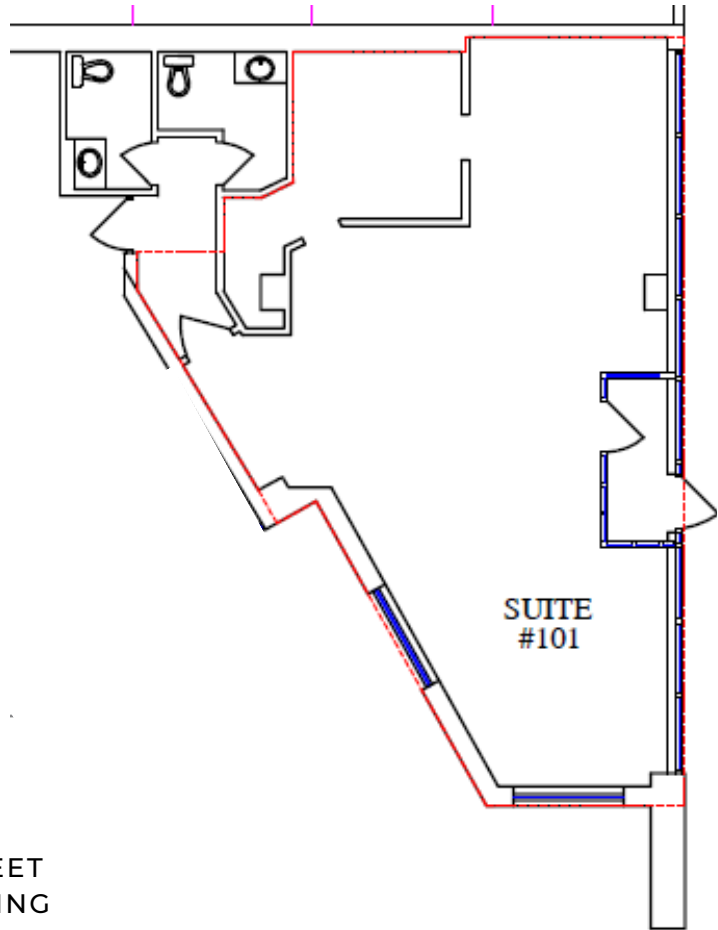
- MARKET NET RENT
- ADDITIONAL RENT: \$15.01 PSF (2024), PLUS MANAGEMENT FEE
- AVAILABLE IMMEDIATELY
- FLEXIBLE TERM LENGTH

- YEAR BUILT: 1981, UPGRADED IN 2013
- ZONING: C-COR 2
- BUILDING AREA: 45,217 SF
- PARKING: 1 STALL PER +/-700 SF (UNDERGROUND AND SURFACE COMBINED)
- PARKING RATES: MARKET RATES - CALL FOR DETAILS
- VISITOR PARKING: 7 BUILDING VISITOR STALLS WITH 3-HOUR TIME ALLOCATIONS

Suite 101 1,117 SF



- RETAIL OPPORTUNITY
- FORMER CAFE SPACE
- SEPARATE ENTRANCE OFF 2ND STREET
- FIXTURED WITH KITCHEN AND SEATING
- SECURE WASHROOMS



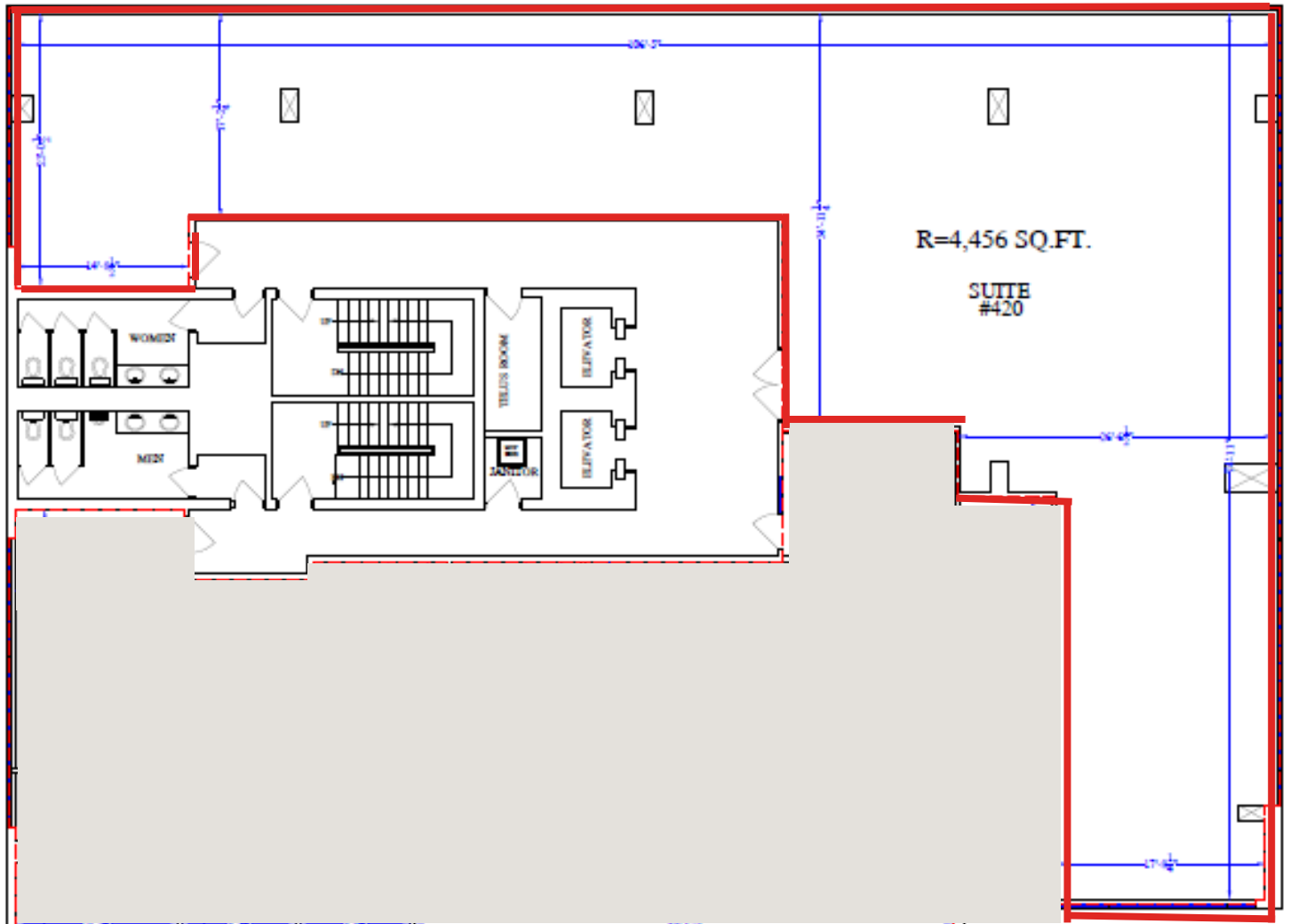
Lori Suba
President & Broker
(403)850-4248
lsuba@scoutrealestate.ca

Laurae Spindler
Vice President & Associate
(403)471-4871
lspindler@scoutrealestate.ca

The information is intended for informational purpose only and should not be relied upon by recipients hereof. Scout Real Estate Ltd. neither guarantees, warrants or assumes any responsibility or liability with respect to the accuracy, correctness, completeness, or suitability of, or decisions based upon or in connection with, the information. The Information may change and any property described herein may be withdrawn from the market at any time without notice or obligation of any kind on the part of Scout Real Estate Ltd.

Suite 420 4,456 SF

- PARTIAL FLOOR - DEMISING OPTIONS AVAILABLE
- UPDATED FINISHES
- MOVE-IN READY, OPEN PLAN
- EXCELLENT NATURAL LIGHT



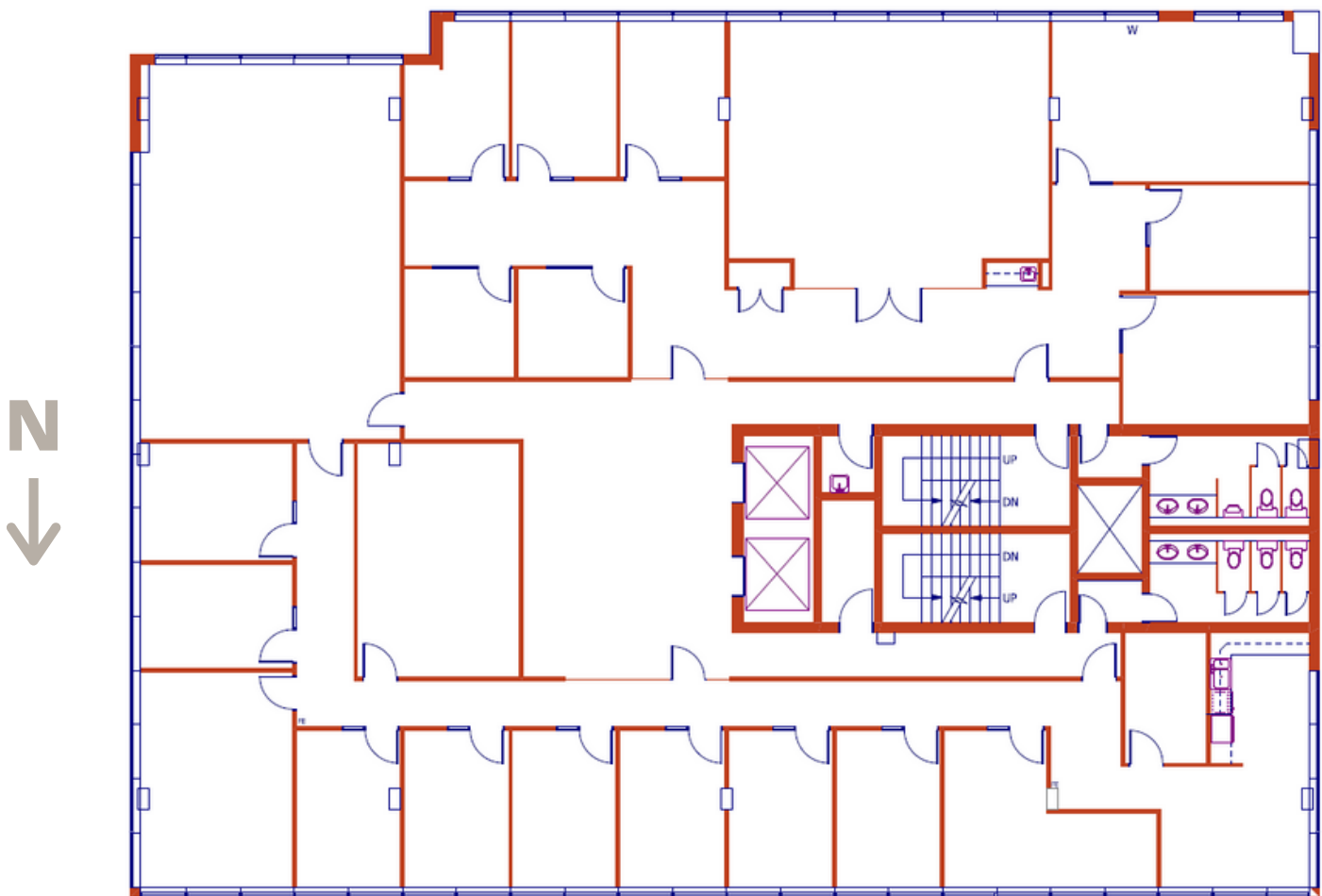
Lori Suba
President & Broker
(403)850-4248
lsuba@scoutrealestate.ca

Laurae Spindler
Vice President & Associate
(403)471-4871
lspindler@scoutrealestate.ca

The information is intended for informational purpose only and should not be relied upon by recipients hereof. Scout Real Estate Ltd. neither guarantees, warrants or assumes any responsibility or liability with respect to the accuracy, correctness, completeness, or suitability of, or decisions based upon or in connection with, the information. The Information may change and any property described herein may be withdrawn from the market at any time without notice or obligation of any kind on the part of Scout Real Estate Ltd.

Suite 500 8,377 SF

- FULL FLOOR - DEMISING OPTIONS AVAILABLE
- OFFICE INTENSIVE WITH LARGE MEETING SPACES
- EXCELLENT NATURAL LIGHT



Lori Suba
President & Broker
(403)850-4248
lsuba@scoutrealestate.ca

Laurae Spindler
Vice President & Associate
(403)471-4871
lspindler@scoutrealestate.ca

The information is intended for informational purpose only and should not be relied upon by recipients hereof. Scout Real Estate Ltd. neither guarantees, warrants or assumes any responsibility or liability with respect to the accuracy, correctness, completeness, or suitability of, or decisions based upon or in connection with, the information. The Information may change and any property described herein may be withdrawn from the market at any time without notice or obligation of any kind on the part of Scout Real Estate Ltd.



DEMOGRAPHICS

- 164,897 POPULATION WITHIN 5 KM
- AVERAGE HOUSEHOLD INCOME \$150,441
- 77,889 HOUSEHOLDS WITHIN 5 KM
- MEDIAN AGE 37.9
- TWO WAY TRAFFIC COUNT ON 58TH AVE ~9,000 VEHICLES/DAY



Lori Suba
President & Broker
(403)850-4248
lsuba@scoutrealestate.ca

Laurae Spindler
Vice President & Associate
(403)471-4871
lspindler@scoutrealestate.ca

SCOUTREALESTATE.CA