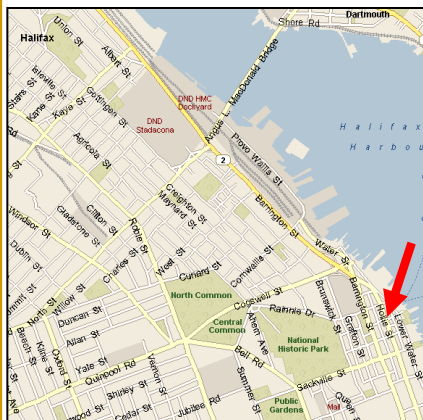


Property

**5151 George Street
Halifax, Nova Scotia**

Available



Suite/Floor Number	Square Feet	Net Rental Rate	2020 Tax & Opex	Available
Suite GL01	5,000	Call For Rates Great location for restaurant		Immediately
Suite 401	10,654	\$12.00 Landlord can demise	\$15.21	Immediately
Suite 501	8,039	\$12.00 Landlord can demise	\$15.21	Immediately
Suite 602	2,024	\$12.00	\$15.21	Immediately
Suite 901	10,663	\$12.00 Landlord can demise	\$15.21	Immediately
Suite 1000	5,066	\$12.00 Landlord can demise	\$15.21	Immediately
Suite 1501	10,661	\$12.00 Landlord can demise	\$15.21	Immediately
Suite 1601	10,661	\$12.00 Landlord can demise	\$15.21	Immediately
Building: 160,830 SF 17 Storeys				

Highlights

Located in downtown Halifax's Central Business District, 5151 George Street has much to offer prospective tenants:

- Convenient location with ready access to Halifax's waterfront, parking, public transit and ferry service
- Unobstructed views of Halifax Harbour
- On-site management office

DISCLAIMER: Info contained in this brochure is subject to substantiation or revision without notice. No liability is presumed by the Landlord or Compass for errors & omissions. Compass is licensed and operates in accordance with the Nova Scotia Real Estate Act. Compass represents the interests of the building owner, Robin Halifax Holdings Limited, as its broker. As such, prospective tenants are advised that they will be treated as a customer of Compass. Customers are encouraged to see independent counsel and advice in all matters related to real estate negotiations.

Contact

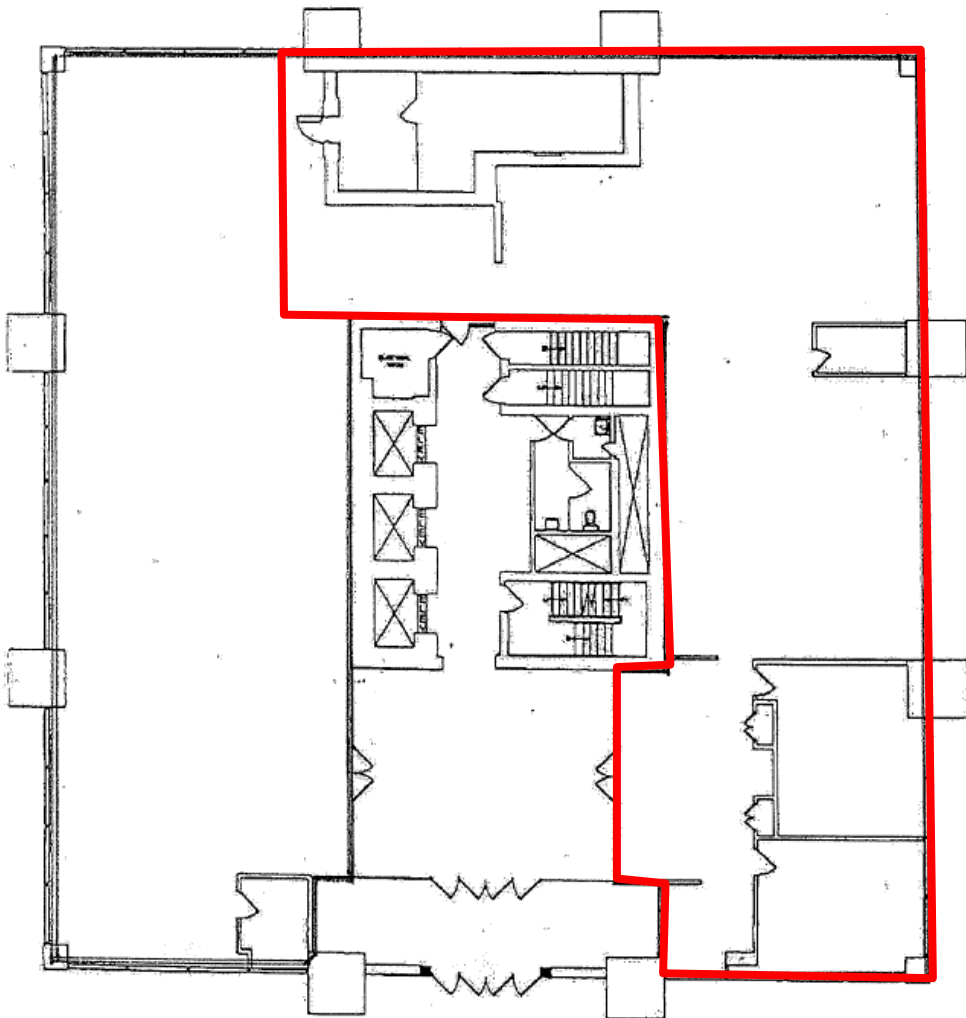
Jonathan Hartlen
(902) 482-9201
(902) 209-9619 cell
jhartlen@compassbroker.com

Suite 290 - 3 Spectacle Lake Dr.
Dartmouth, NS B3B 1W8
902.454.1234
compassbroker.com

Additional

Suite GL01
+/- 5,000 SF

➤ Landlord can demise



Contact

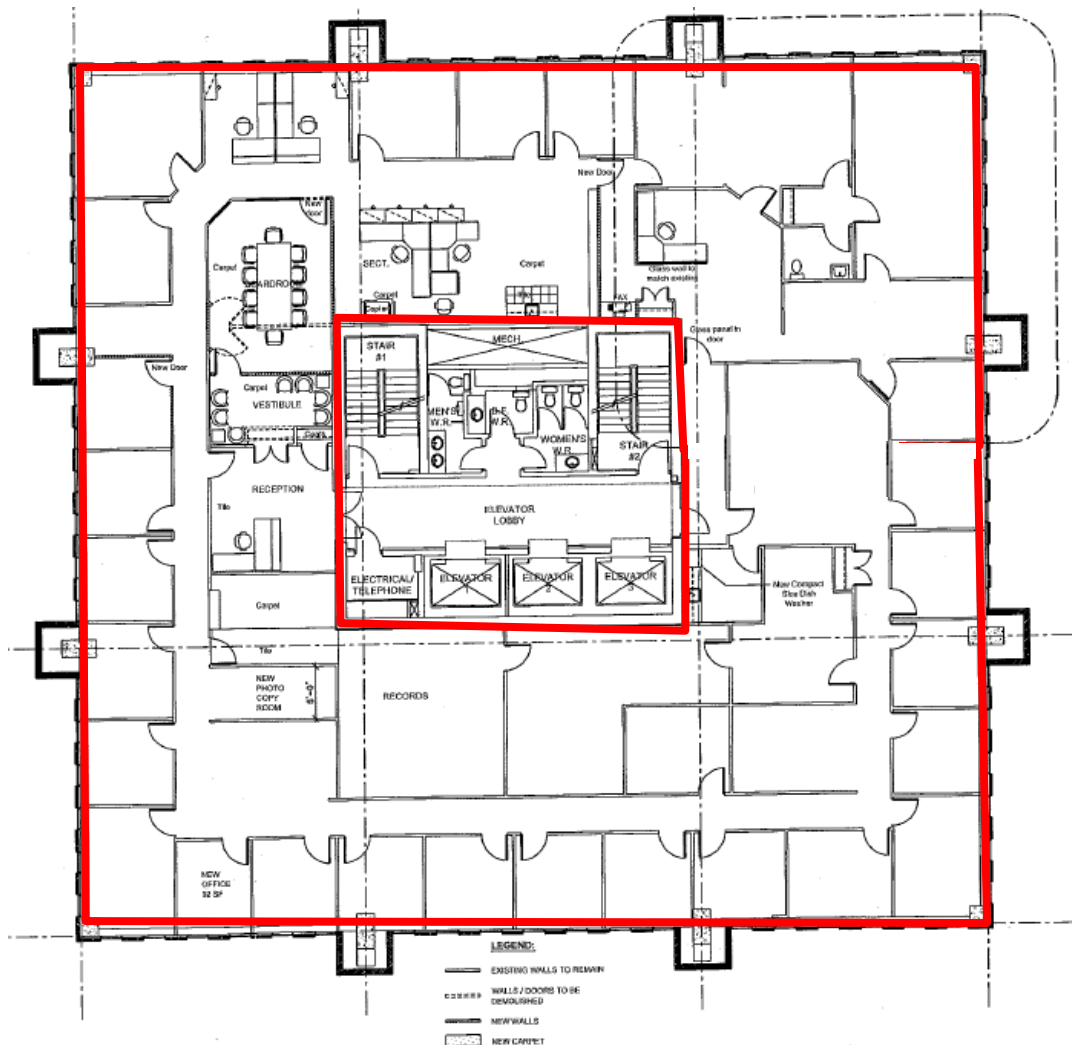
Jonathan Hartlen
(902) 482-9201
(902) 209-9619 cell
jhartlen@compassbroker.com

Suite 290 - 3 Spectacle Lake Dr.
Dartmouth, NS B3B 1W8
902.454.1234
compassbroker.com

Additional

Suite 401
+/- 10,654 SF

➤ Landlord can demise



Contact

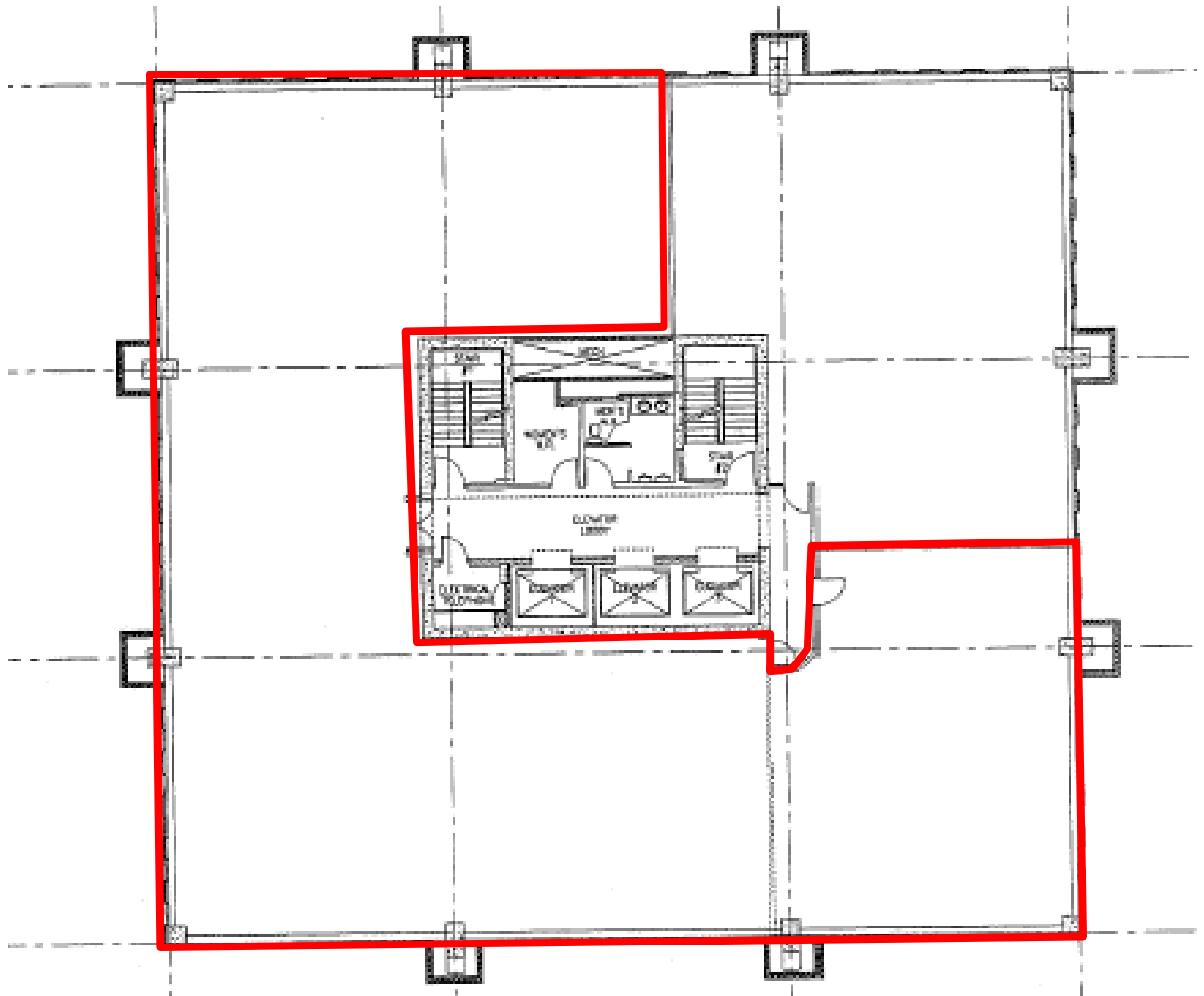
Jonathan Hartlen
(902) 482-9201
(902) 209-9619 cell
jhartlen@compassbroker.com

Suite 290 - 3 Spectacle Lake Dr.
Dartmouth, NS B3B 1W8
902.454.1234
compassbroker.com

Additional

Suite 501
+/- 8,039 SF

➤ Landlord can demise

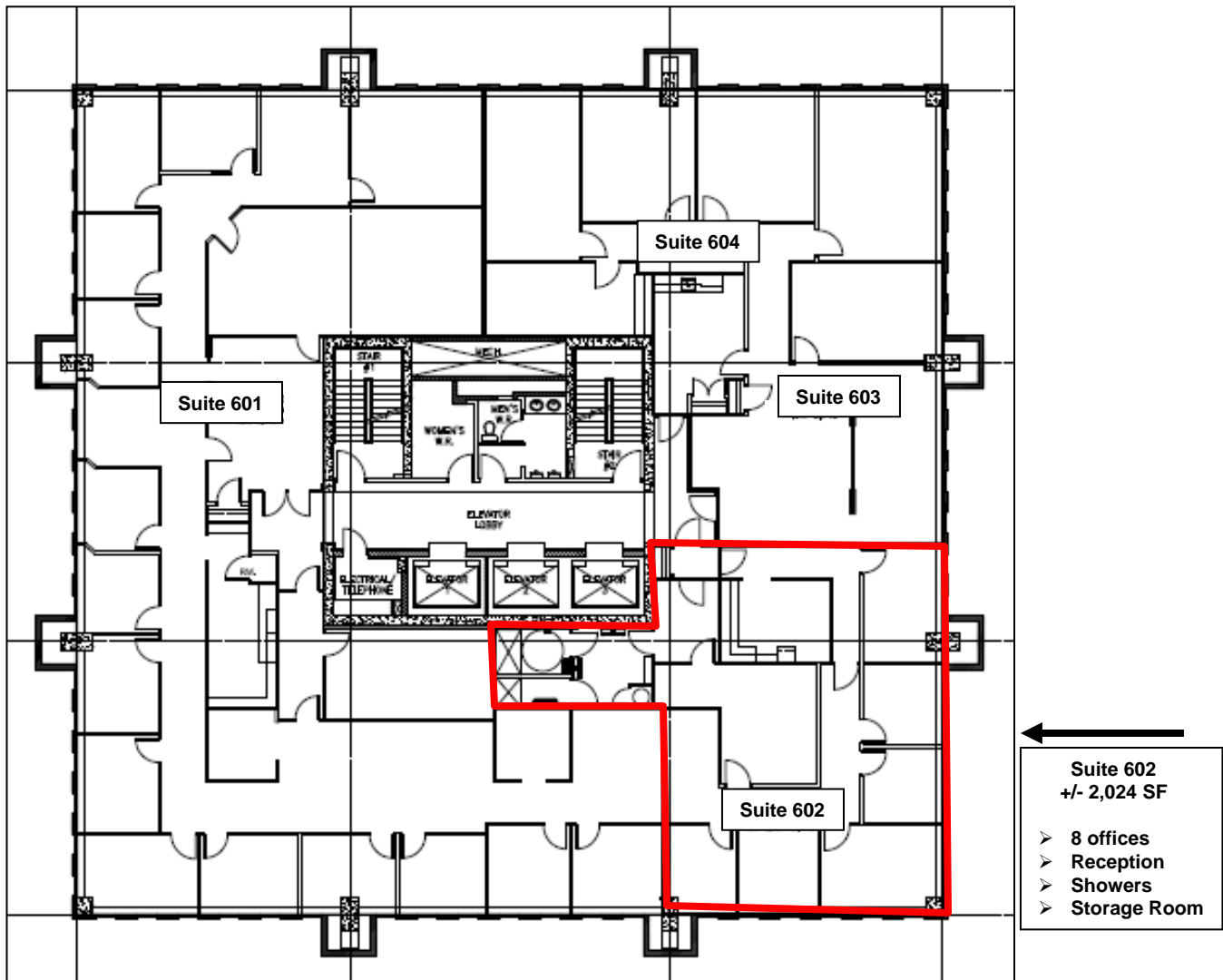


Contact

Jonathan Hartlen
(902) 482-9201
(902) 209-9619 cell
jhartlen@compassbroker.com

Suite 290 - 3 Spectacle Lake Dr.
Dartmouth, NS B3B 1W8
902.454.1234
compassbroker.com

Additional



Contact

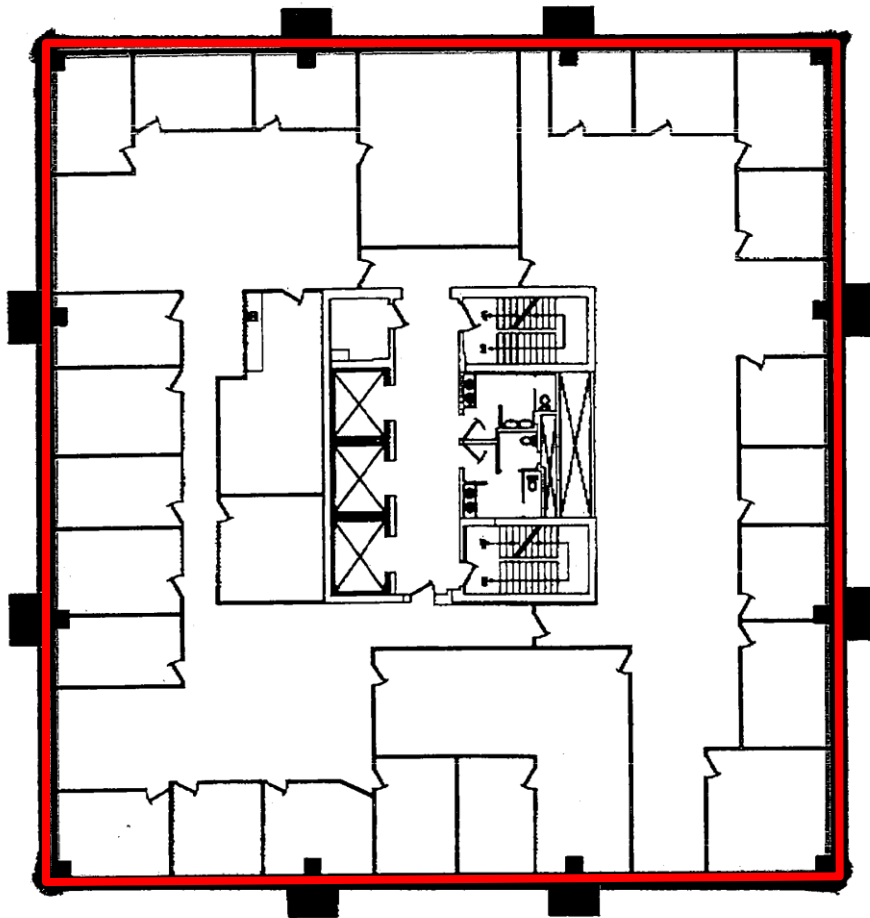
Jonathan Hartlen
(902) 482-9201
(902) 209-9619 cell
jhartlen@compassbroker.com

Suite 290 - 3 Spectacle Lake Dr.
Dartmouth, NS B3B 1W8
902.454.1234
compassbroker.com

Additional

Suite 901
+/- 10,663 s.f.

➤ Landlord can demise



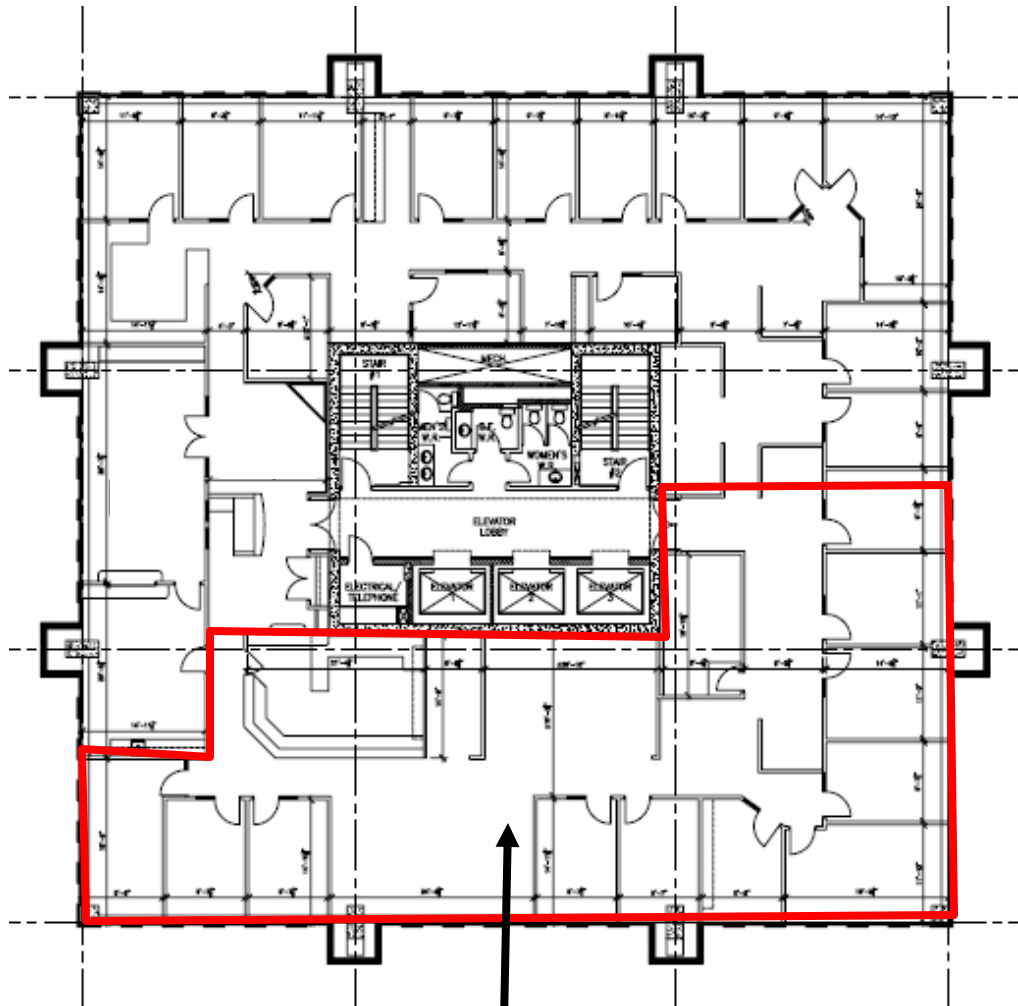
George Street
9th Floor

Contact

Jonathan Hartlen
(902) 482-9201
(902) 209-9619 cell
jhartlen@compassbroker.com

Suite 290 - 3 Spectacle Lake Dr.
Dartmouth, NS B3B 1W8
902.454.1234
compassbroker.com

Additional



Suite 1000
+/- 5,066 SF

- Landlord can demise
- Superior finishings
- Professional office space

Contact

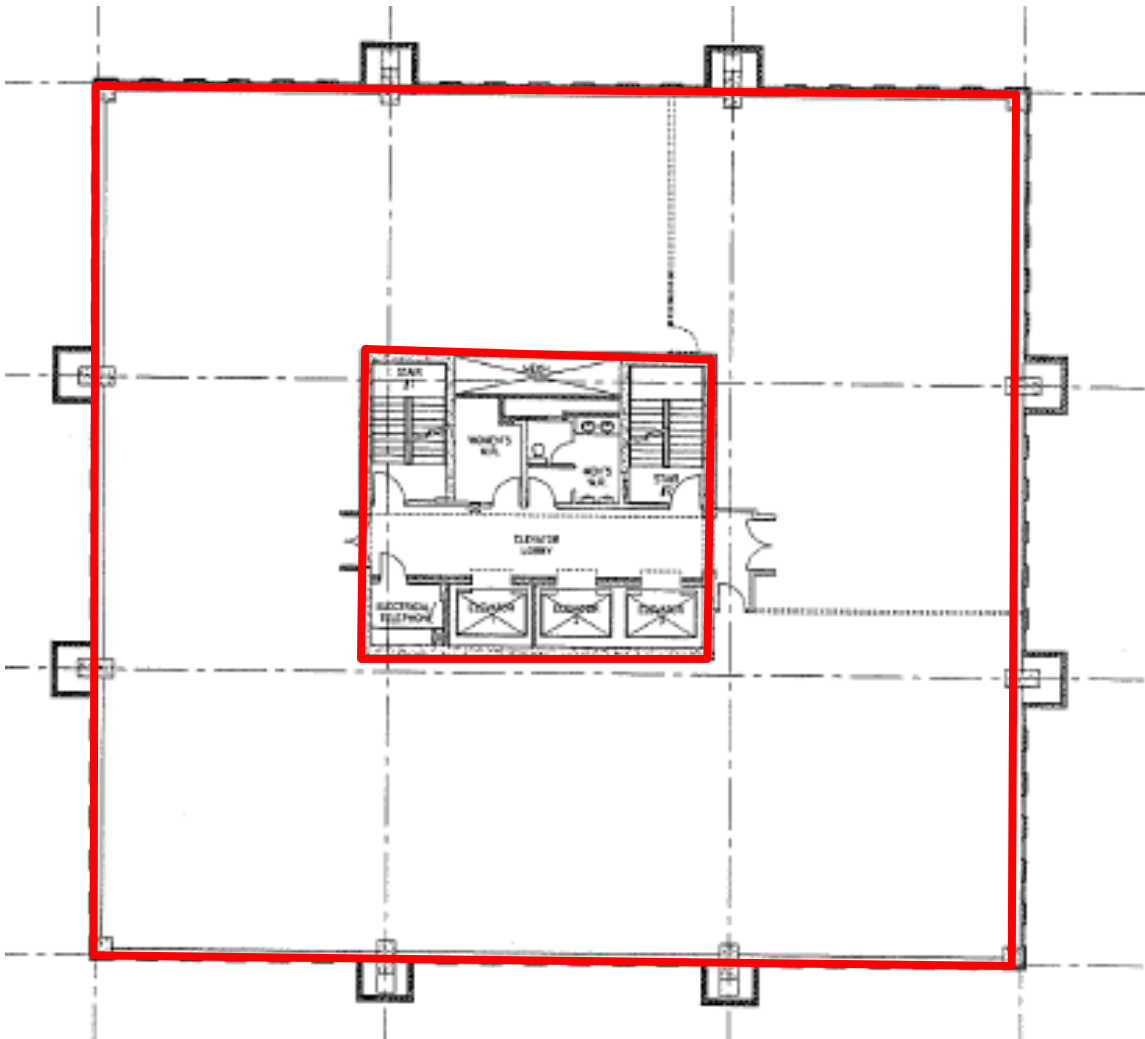
Jonathan Hartlen
(902) 482-9201
(902) 209-9619 cell
jhartlen@compassbroker.com

Suite 290 - 3 Spectacle Lake Dr.
Dartmouth, NS B3B 1W8
902.454.1234
compassbroker.com

Additional

Suite 1501
+/- 10,661 s.f.

- Landlord can demise



Contact

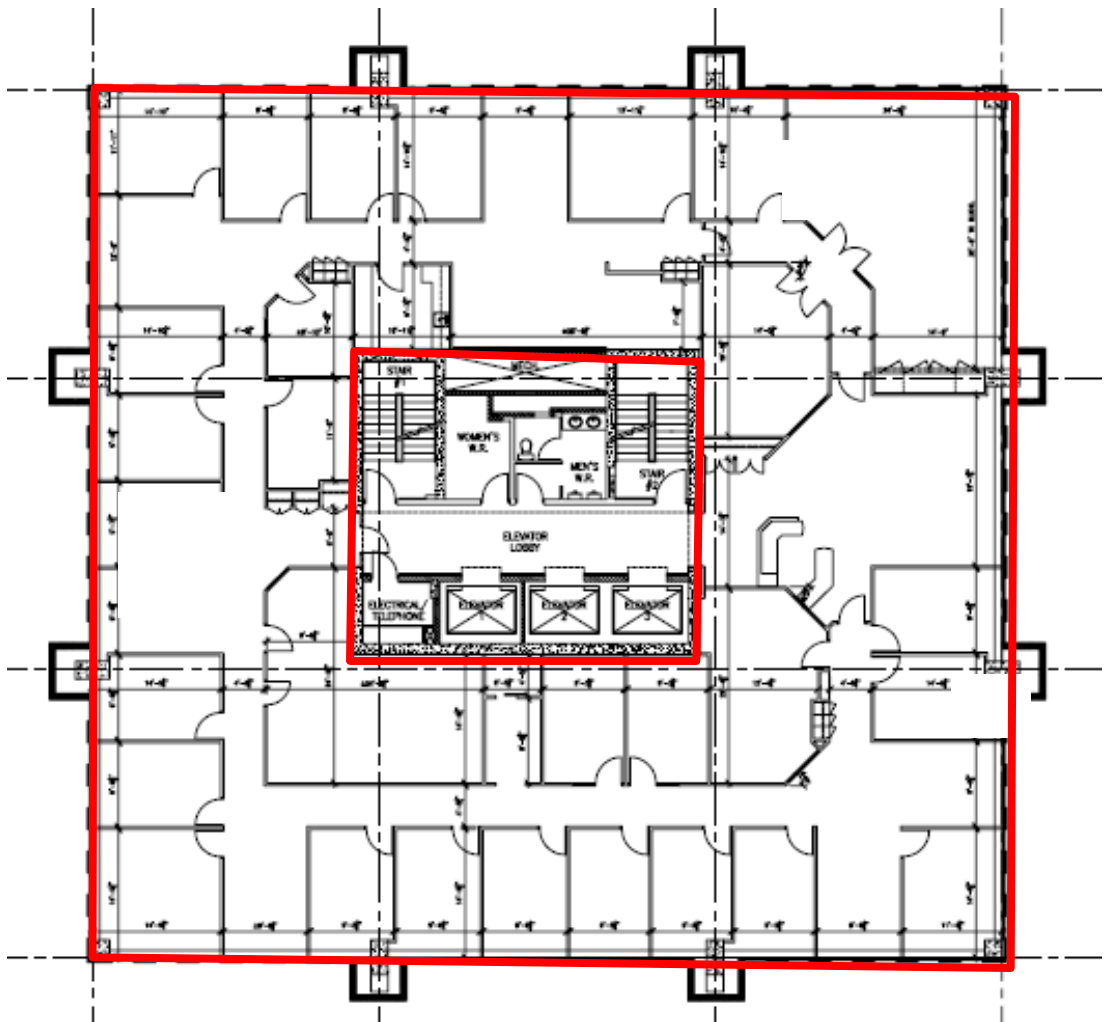
Jonathan Hartlen
(902) 482-9201
(902) 209-9619 cell
jhartlen@compassbroker.com

Suite 290 - 3 Spectacle Lake Dr.
Dartmouth, NS B3B 1W8
902.454.1234
compassbroker.com

Additional

Suite 1601
+/- 10,661 SF

➤ Landlord can demise



Contact

Jonathan Hartlen
(902) 482-9201
(902) 209-9619 cell
jhartlen@compassbroker.com

Suite 290 - 3 Spectacle Lake Dr.
Dartmouth, NS B3B 1W8
902.454.1234
compassbroker.com