

FOR LEASE - OFFICE & GROUND FLOOR RETAIL SPACE
214 MONTREAL ROAD



Office & Ground Floor Retail Space in East End of Downtown Ottawa

214 Montreal Road 1,029sf to 5,200sf available

Conveniently located and highly accessible office space for lease in the east end of downtown Ottawa. This professionally managed 5-story office building is well located just off the Vanier Parkway at Montreal Road and features efficient floor plates, high end existing improvements and heated underground parking.

Tenants are sure to enjoy scenic alternatives that will save time commuting from Orleans (East) via Montreal Road or from downtown (West) via Rideau Street.

This property is located mid-point approximately 2km west of the Monfort Hospital and approximately 2km east of Rideau Centre and the Byward Market. Clients and staff will find ample amenities within walking distance and many parks within short driving/biking distance.

Regional Group
1737 Woodward Drive, 2nd
Floor
Ottawa, ON
K2C 0P9

(613) 230-2100

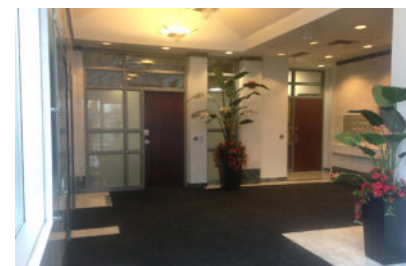
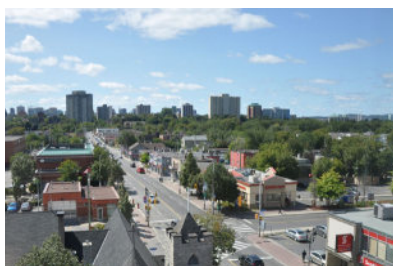
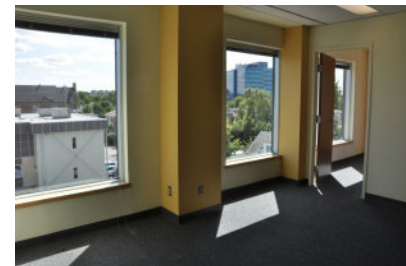
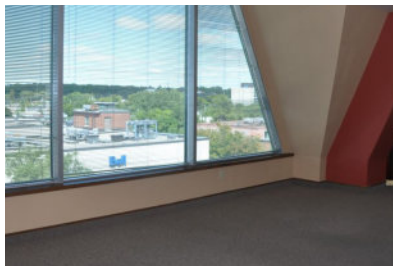
info@regionalgroup.com

Todd Beech
Director, Leasing
(613) 230-2100 x7208
tbeech@regionalgroup.com



Property Highlights

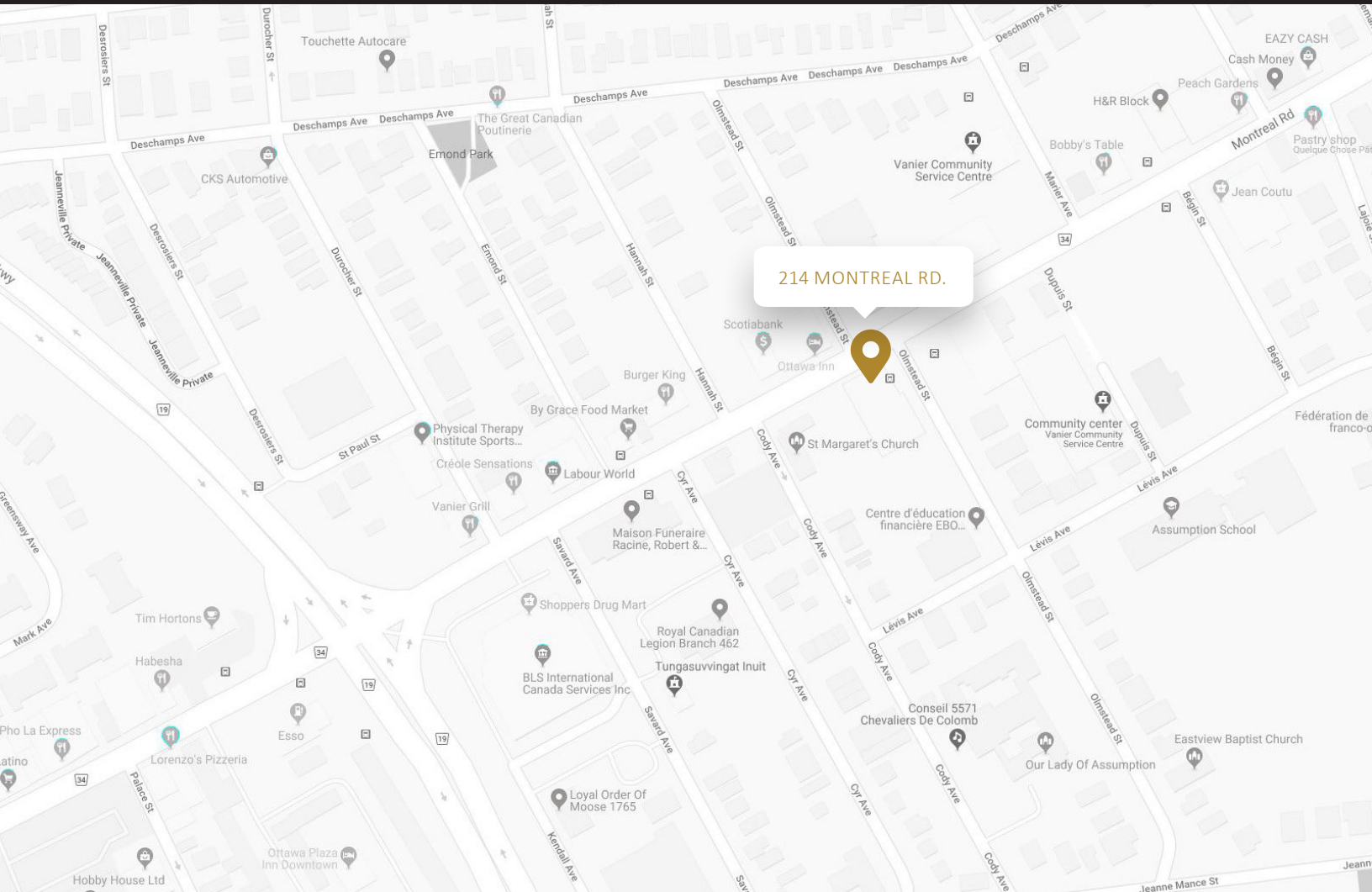
- Quiet professional building
- Abundant natural light with pleasant views of the surrounding areas
- Perimeter key access system, capable of “synchronization” with tenant suite access system
- High power- 2500amp, 600/347v, 4-wire electrical
- Professionally managed building with 24/7 emergency on-call service
- Abundant heated underground parking
- Overnight security patrols
- Barrier-free, fully-accessible building
- Ground floor suitable for retail use
- Short drive to downtown via Montreal Rd.
- Building signage opportunity



Availability & Rates

Suite	Area (sf)	Net Rent (PSF)	Additional Rent (PSF)	Availability
102 retail	1,224	\$20.00	\$17.66	Immediate
110	1,975	\$15.00	\$17.66	Immediate
200	3,546	\$15.00	\$17.66	Immediate
201	1,029	\$15.00	\$17.66	Immediate
202	2,673	\$15.00	\$17.66	Immediate
301 & 302	5,200	\$15.00	\$17.66	Immediate
402	3,151	\$15.00	\$17.66	Immediate
500	8,291	\$15.00	\$17.66	Immediate

TI Allowance – Negotiable



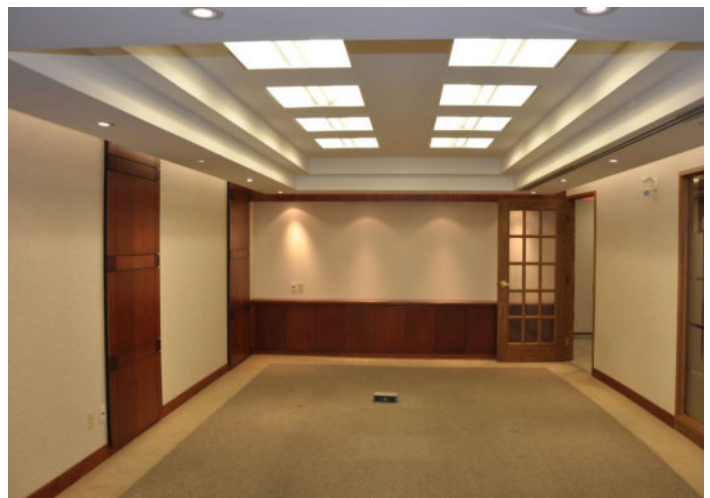
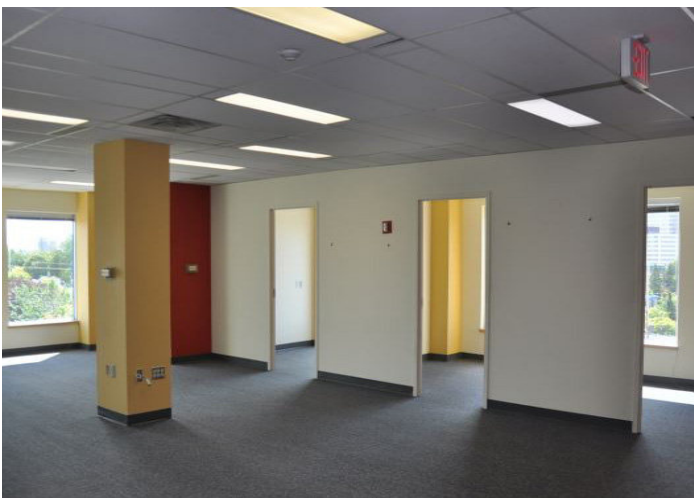
Property Specifications

Year Constructed	1990
Construction	Concrete
Exterior Walls	Brick
Roof Type	Inverted membrane, sloped metal roofing
Ceiling Height	18' to slab (ground floor)
Power	347/600 with step down transformers
Loading Facilities	No
Air Conditioning	64 heat pumps
Heat	Boilers
Sprinklered	Yes
Parking Spots	22 underground; 64 surface
Elevator	Yes
Separately Metered	Yes

Todd Beech
Leasing Manager

(613) 230-2100 x7208
tbeech@regionalgroup.com

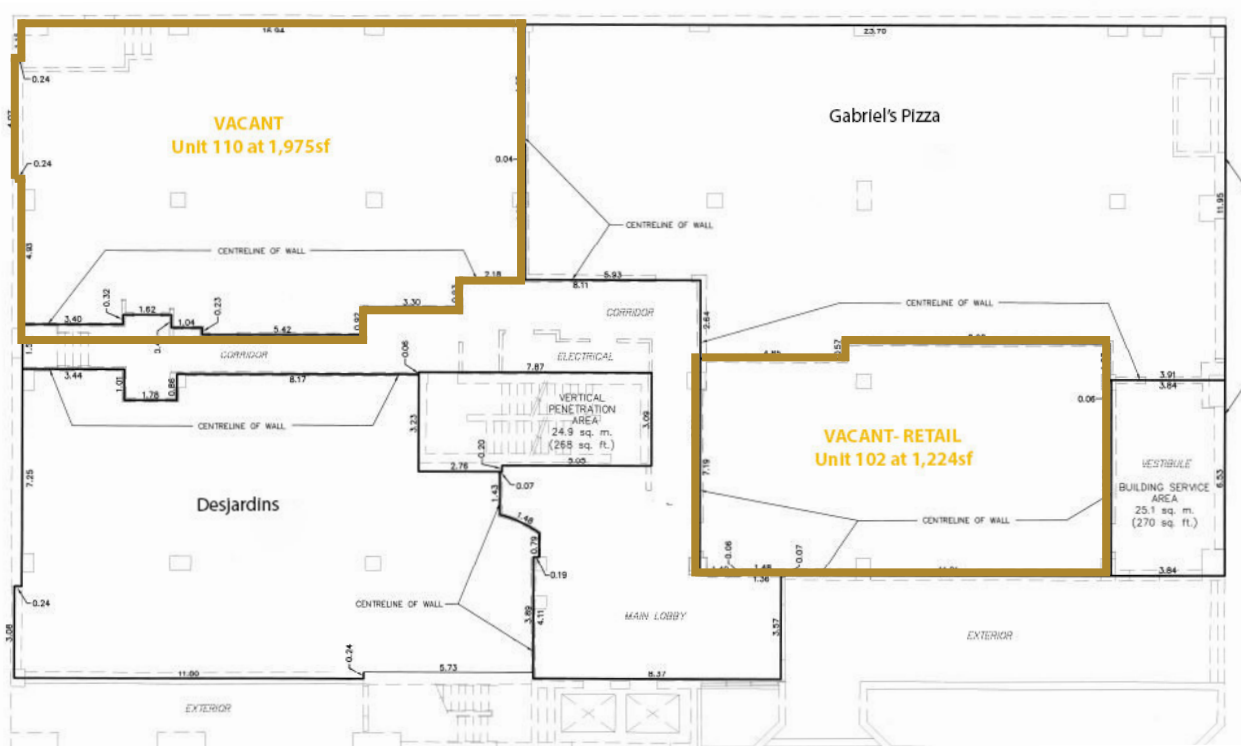
1737 Woodward Drive, 2nd Floor, Ottawa, ON K2C 0P9
(613) 230-2100 • regionalgroup.com



Ground Floor

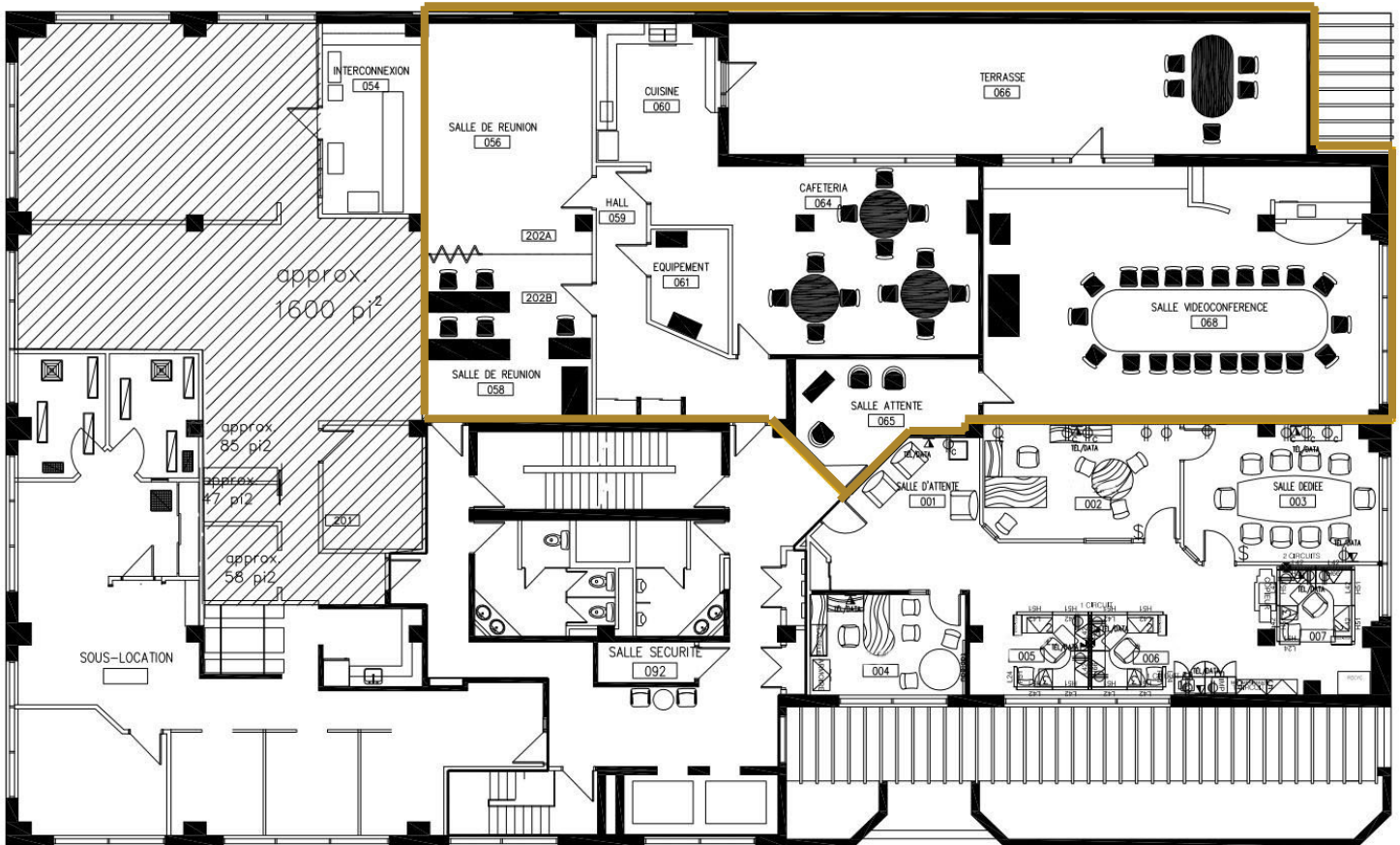
Unit #102 Retail-1,224sf

Unit #110- 1,975sf



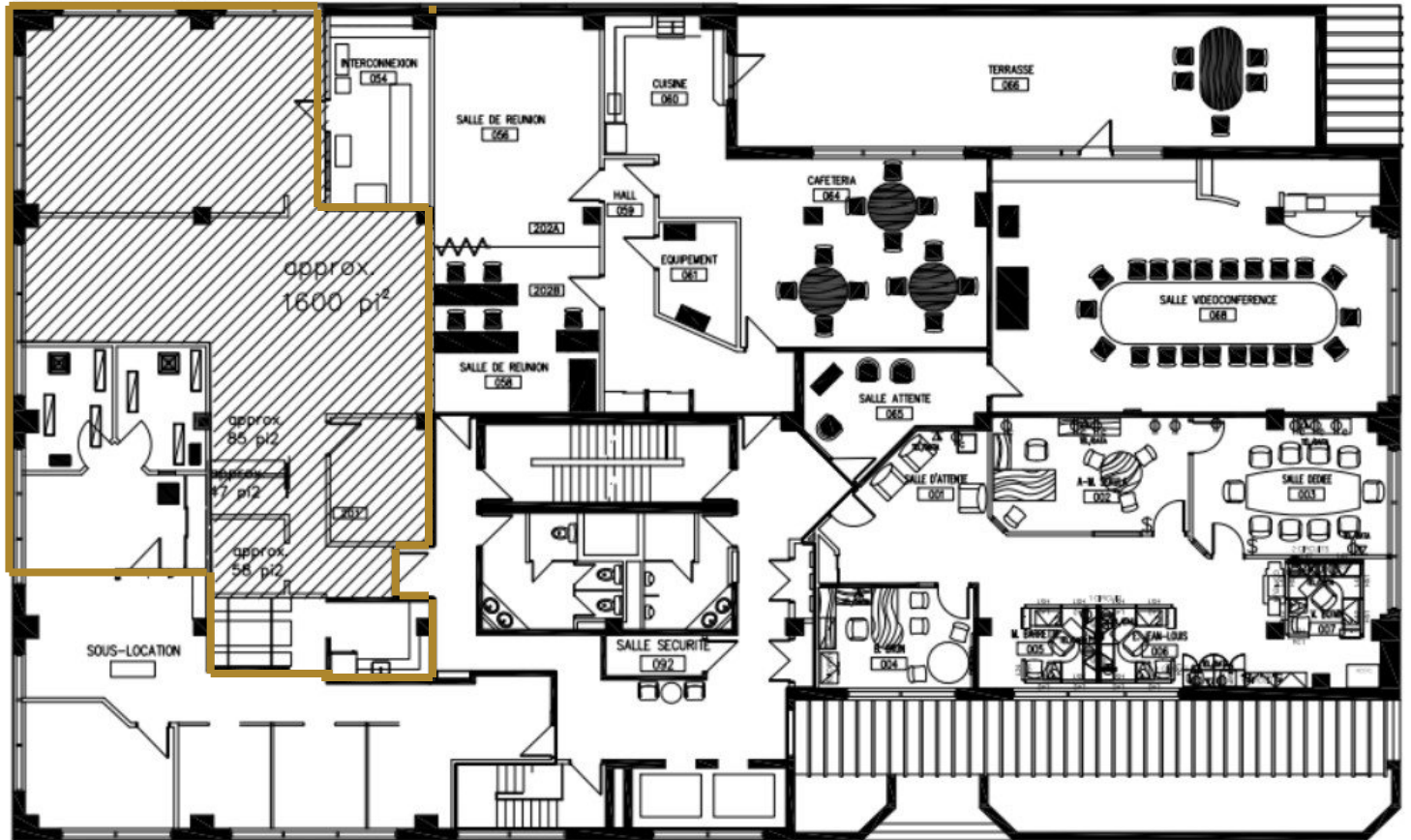
Suite 200

3,546sf



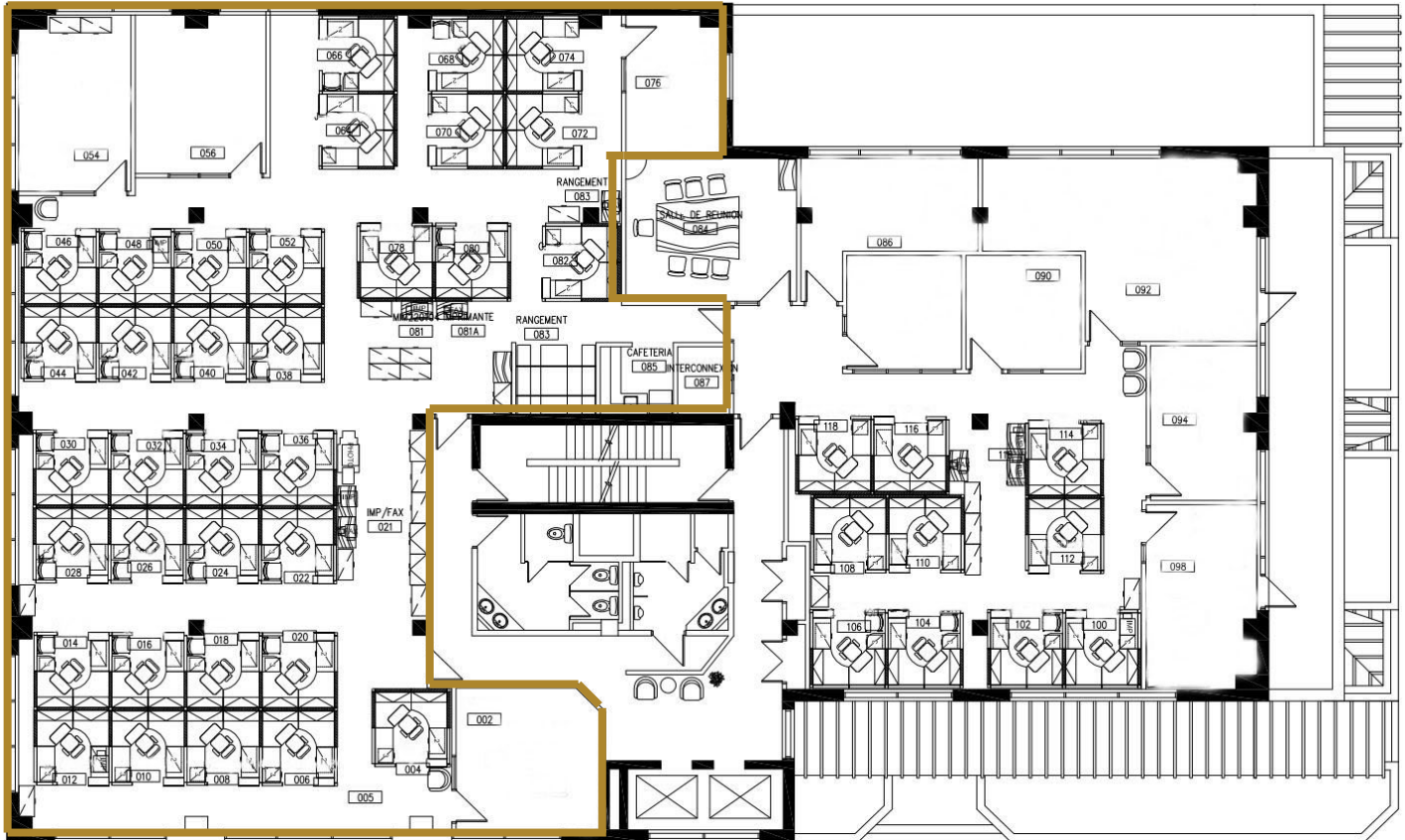
Suite 202

2,673sf



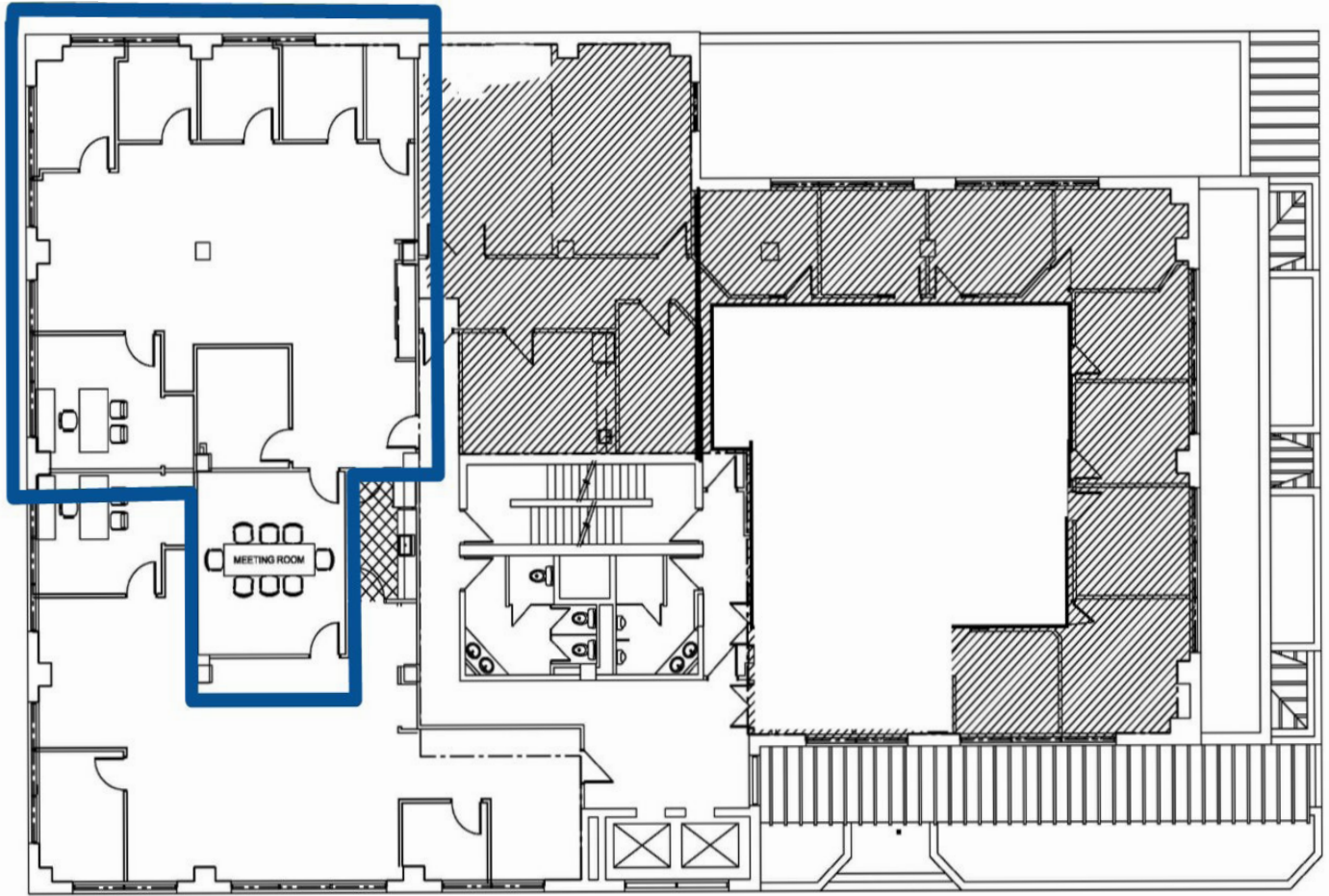
Suite 301 & 302

5,200 sf (Can be sub-divided)



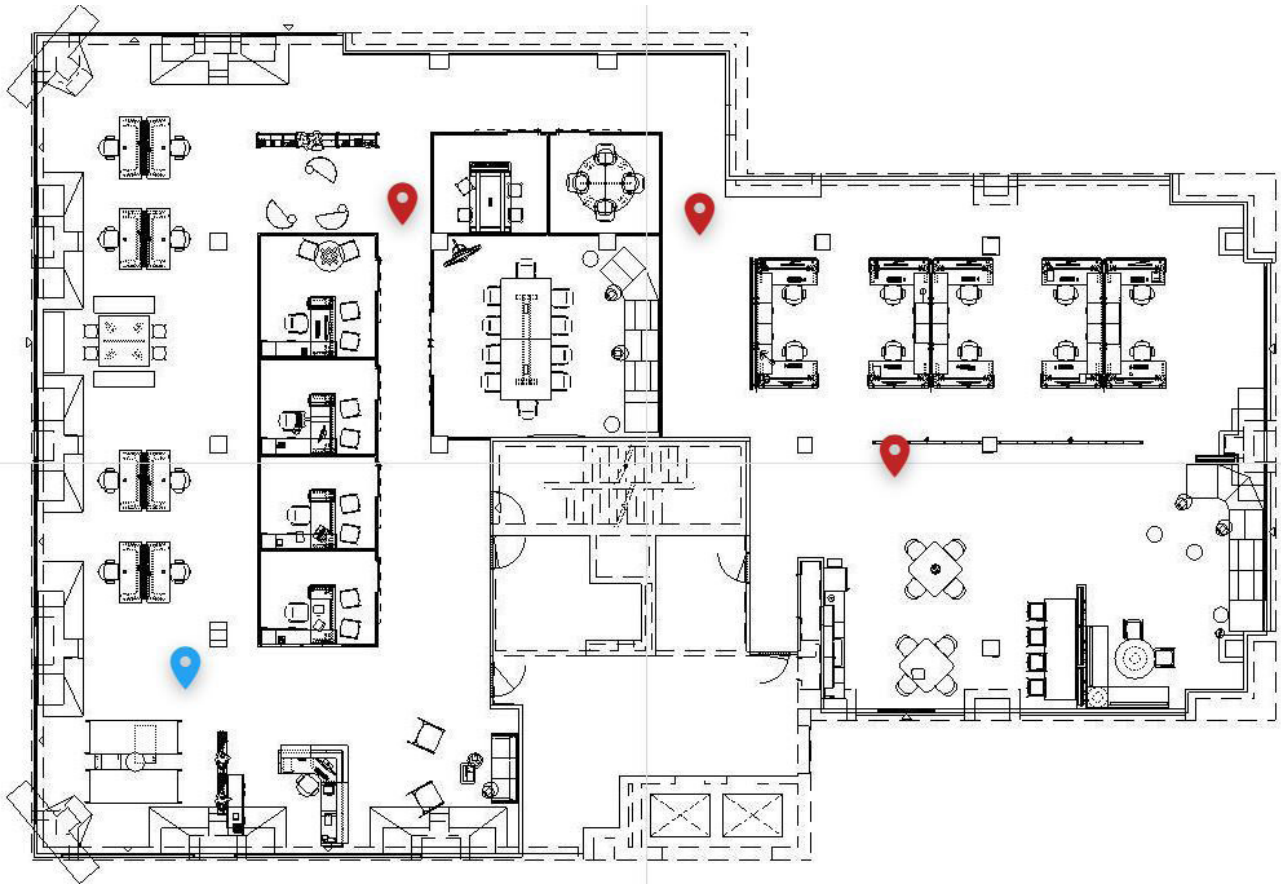
Suite 402

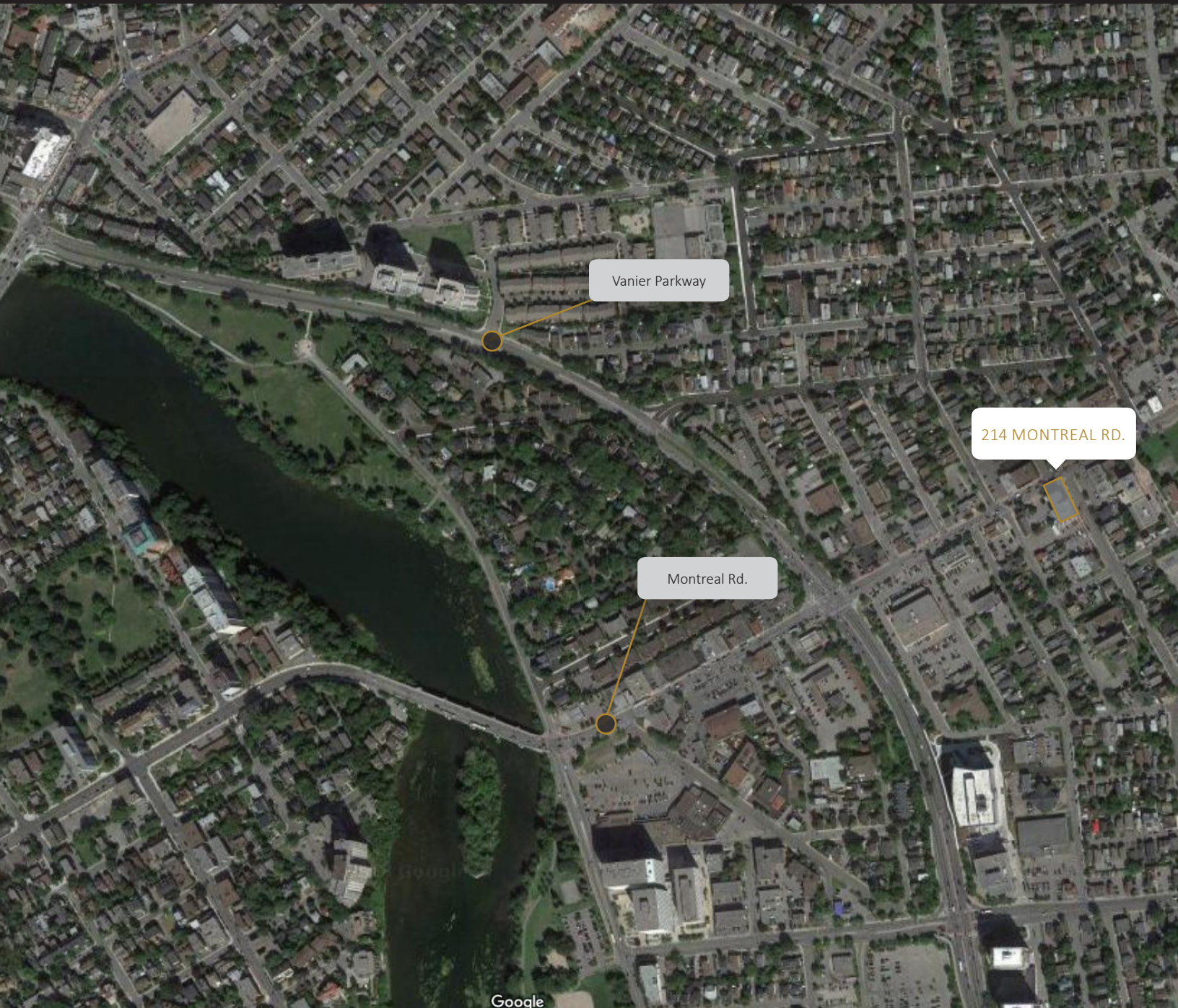
3,151sf



Suite 500

8,291sf





Contact us

Todd Beech
Director, Leasing
(613) 230-2100 x7208
tbeech@regionalgroup.com

Regional Group
1737 Woodward Drive, 2nd Floor
Ottawa, ON
K2C 0P9

(613) 230-2100
info@regionalgroup.com
regionalgroup.com

The information herein contained has not been verified by The Regional Group of Companies Inc. (the 'Agent'). The Agent does not warrant in any manner, implied or otherwise, that the information herein contained is accurate. The Agent does not, and will not, accept or assume any liability for any consequence or result, negative or otherwise, arising from the reliance of the party receiving the information (the 'Recipient') on the information herein contained. It is the sole and exclusive responsibility of the Recipient to independently verify all information herein contained and perform all due diligence as reasonably required. The information herein contained is subject to change and / or alteration without prior notice, and the Agent hereby reserves the exclusive right to remove from the market said information and / or the Property / Space for Lease to which it pertains. The Regional Group of Companies Inc. is acting solely as an agent for its client, and is not acting in its personal or corporate capacity.

