

FOR LEASE

150 MONTRÉAL ROAD

Ottawa, ON K1L 8H2



JOHN ZINATI
613.853.4106
john@zinatirealty.com

92 CENTREPOINTE DRIVE • OTTAWA, ON K2G 6B1 • 613.853.4106 • ZINATIREALTY.COM

 **ZINATI**
REALTY
COMMERCIAL BROKERAGE



OFFERING SUMMARY

Available SF:	1,000 - 5,958 SF
Lease Rate:	\$15.00 SF/yr (NNN)
Additional Rent:	approx. \$15.00 PSF

PROPERTY OVERVIEW

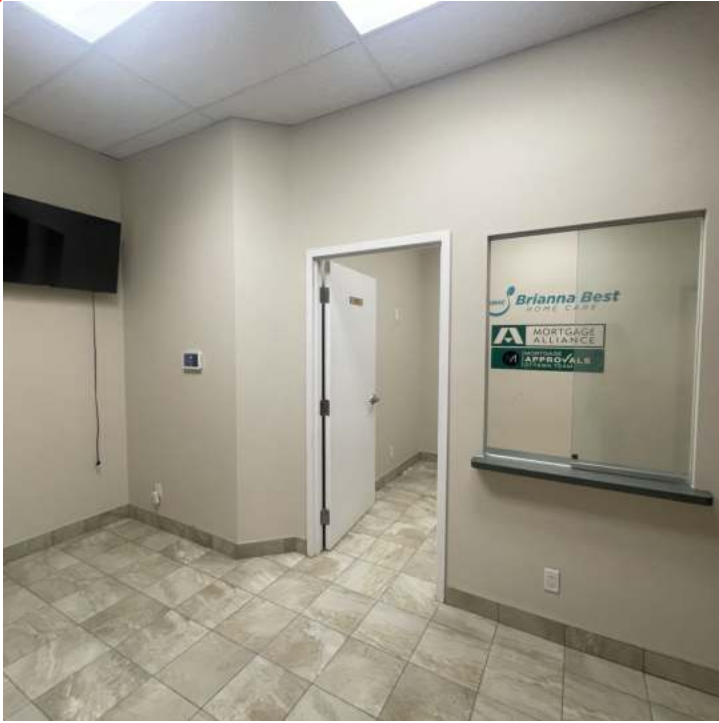
Ground and second floor office space available for lease in Ottawa's East end at the corner of Vanier Parkway and Montreal Road. Ground floor space (approx. 1,000 SF) features reception area, waiting room, Two (2) enclosed offices, and storage room. Second floor space (approx. 5,958 SF) features fourteen (14) enclosed offices, Two (2) large open workspaces with ample natural light, Two (2) large meeting rooms (approx. 10' x 18'), IT closet complete with cat wire, rack and independent cooling unit, large eat-in kitchen, large welcoming reception area, and Five (5) access points off main hallway.

PROPERTY HIGHLIGHTS

- Ability to subdivide second floor office into 5 units
- Elevator access
- Ample free onsite parking
- Public transit available right outside doorstep
- Walking distance to amenities including Subway, Tim Horton's, and Burger King. Shopper's Drug Mart located within building.

150 MONTRÉAL ROAD
OTTAWA, ON K1L 8H2

Photos - Ground Floor (unit 102)



JOHN ZINATI
613.853.4106
john@zinatirealty.com

92 CENTREPOINTE DRIVE • OTTAWA, ON K2G 6B1 • 613.853.4106 • ZINATIREALTY.COM

 **ZINATI**
REALTY
COMMERCIAL BROKERAGE

150 MONTRÉAL ROAD
OTTAWA, ON K1L 8H2

Photos - Second Floor



JOHN ZINATI
613.853.4106
john@zinatirealty.com

92 CENTREPOINTE DRIVE • OTTAWA, ON K2G 6B1 • 613.853.4106 • ZINATIREALTY.COM



150 MONTRÉAL ROAD OTTAWA, ON K1L 8H2

Retailer Map



JOHN ZINATI
613.853.4106
john@zinatirealty.com

92 CENTREPOINTE DRIVE • OTTAWA, ON K2G 6B1 • 613.853.4106 • ZINATIREALTY.COM

ZINATI
REALTY
COMMERCIAL BROKERAGE