



**CUSHMAN &  
WAKEFIELD**

Ottawa

# 150 METCALE ST.

Ottawa, ON

**Office 15,404 SF & Retail 485 SF  
Space Available**



# BUILDING OVERVIEW

Suites under a full floor (6,300 sf) are in move in condition, with new improvements on several floor locations. All Column free space. The security desk is manned late afternoon to early morning and all weekends. There is a 7 level parking garage and amenities such as coffee shop (to be confirmed), showers and bike racks available.



1

Outstanding North  
to South horizon  
views

2

550 meters to  
Parliament LRT  
station

# 150 METCALFE STREET AVAILABLE SUITES

VIEW FLOOR-  
PLAN & PHOTOS



10<sup>th</sup> Floor: 3,370 SF

13<sup>th</sup> Floor: 1,112 SF

14<sup>th</sup> Floor: 6,369 SF

16<sup>th</sup> Floor: 3,163 SF

Ground Floor: 485 SF

**Total Office Space:  
15,404 SF**

**Retail Space:  
485 SF**



3

Indoor parking, 5 min.  
access to Nicholas  
QWY ramp

4

Window sizes are  
80% of vertical wall  
height

5

All column free space  
for efficient interior  
design

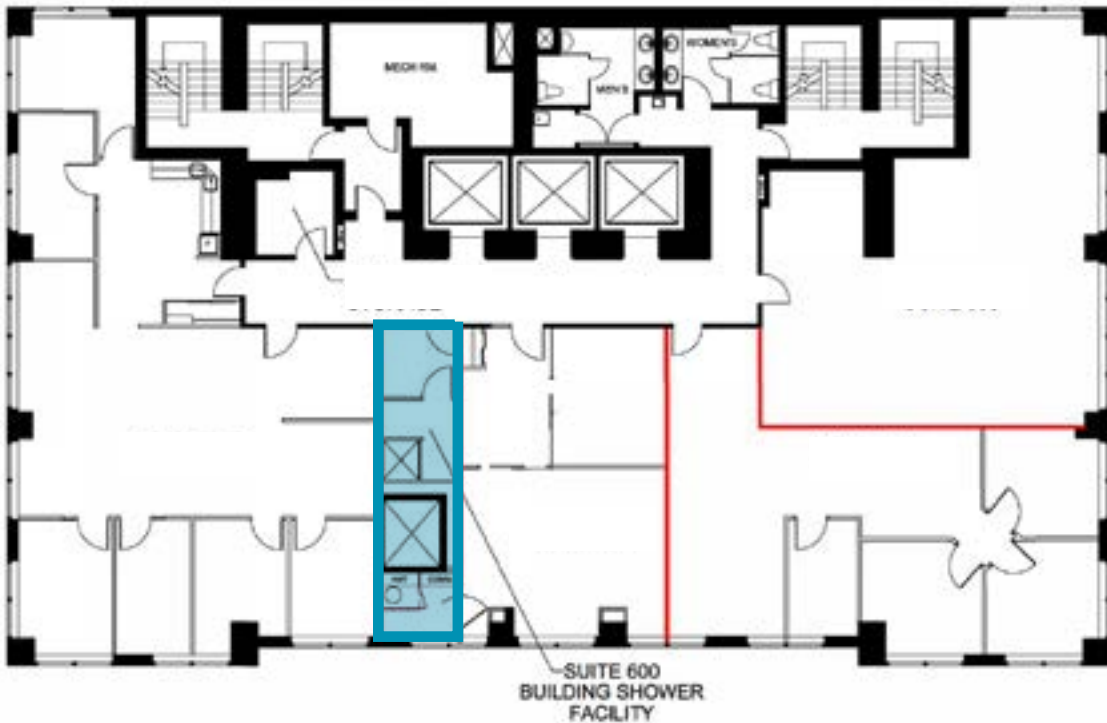
“

**CLASS ‘A’ OFFICE SPACE**

”



# BUILDING SHOWER FACILITIES ON THE 6<sup>TH</sup> FLOOR



“

CLEAN & MODERN

”

# RETAIL SPACE



Ground Floor  
**485 SF**

Retail (coffee shop operators invited to lease these premises).  
Available on 30 days notice. Includes covered patio.

“

**INCLUDES COVERED PATIO**

”





# AREA AMENITIES



## Restaurants

1. Beckta Dining & Wine
2. Starbucks
3. Riviera Ottawa
4. Toca
5. Browns Socialhouse
6. Bâton Rouge Streakhouse

## Hotels

7. The ARC Hotel
8. Sheraton Ottawa
9. Ottawa Marriott
10. Delta Hotels by Marriott
11. The Lord Elgin

## Other

12. CF Rideau Center
13. Ottawa Courthouse
14. National Arts Centre

# CONTACT

**PAUL BENNETT**  
Senior Vice President / Broker  
+1 613 780 1590  
pbennett@cwottawa.com

