



222-230

QUEEN

OTTAWA, ONTARIO

FOR LEASE

AVAILABILITIES

Suite 100** = 913 SF

Suite 104** = 765 SF

Suite 250* = 12,531 SF

Suite 350* = 10,328 SF

Suite 401*** = 7,658 SF

Suite 450* = 6,776 SF

Suite 900*** = 13,708 SF

Suite 1101*** = 6,464 SF

Suite 1105* = 1,715 SF

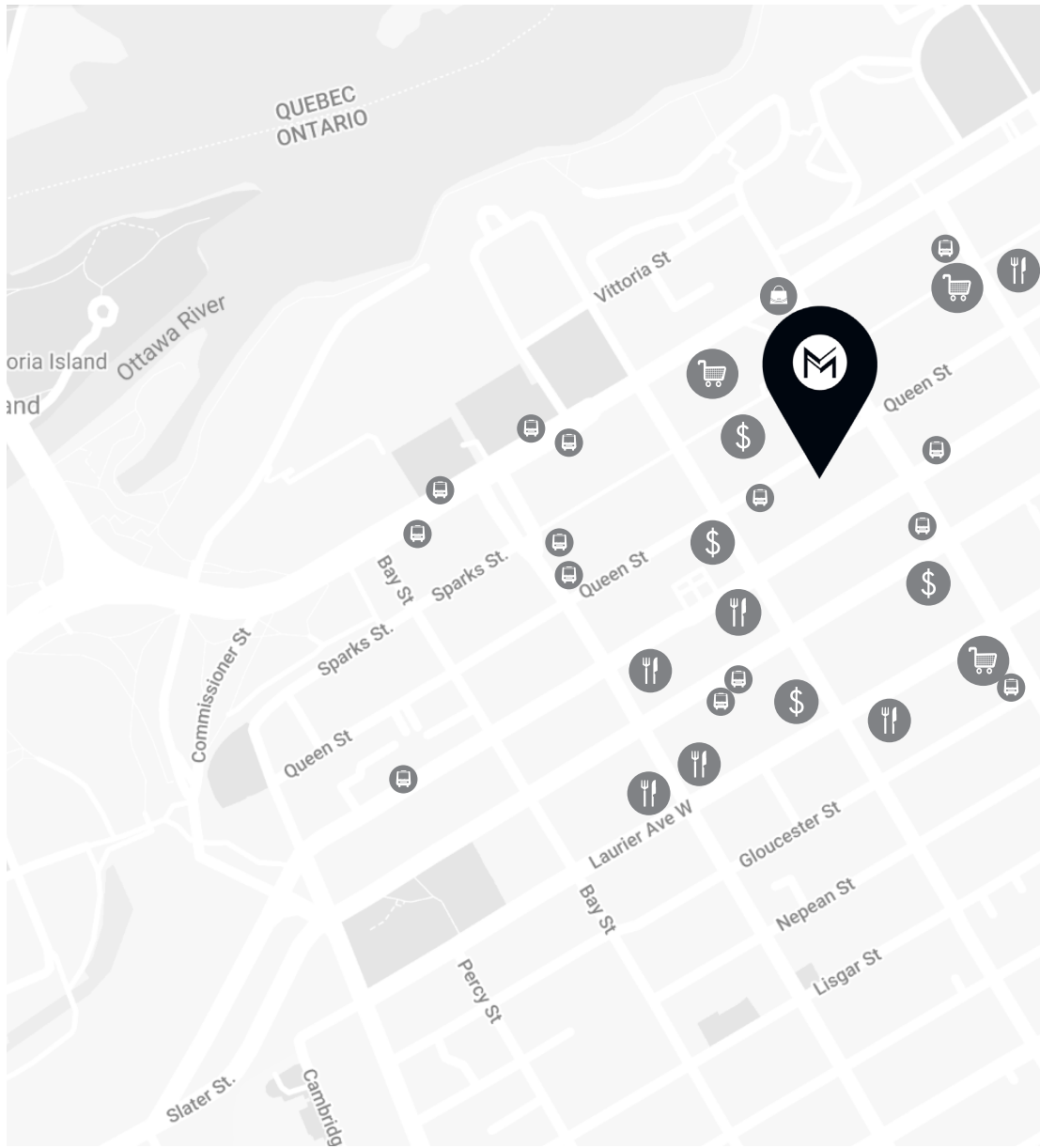
Suite 1201* = 2,022 SF

Suite 1500* = 4,238 SF

*Vacancies Available immediately
** Suite 0100 & 0104 can be made
contiguous for a total of 1,678 sq.ft
***Available December 1, 2023

MACH
PROPERTY

SURROUNDING AREAS



222-230, QUEEN, OTTAWA

NET RENT	CAM	TAXES	TOTAL ADDITIONAL RENT
Please contact agent	\$8.69	\$7.98	\$16.67

FEATURES	
Year built	1971-1972 / 1991 and 2002
Building type	Office
Number of floors	14-storey
Floor area	205,290 SF
Parking space	209 indoor parking at \$318 per month (HST excluded)
Parking ratio	1/1,000 SF
Fire protection	Sprinklers located throughout the building
Elevator	Five elevators (4 at 222 Queen – 1 at 230 Queen)
Public transit	Bus nearby – 1-minute walk from LRT station (Parliament Station)
Amenities	The building offers a shared Boardroom as well as showers and a secured bike cage in the garage

LEASING INQUIRY

John Esposito

Senior Director of Leasing

jesposito@groupemach.com

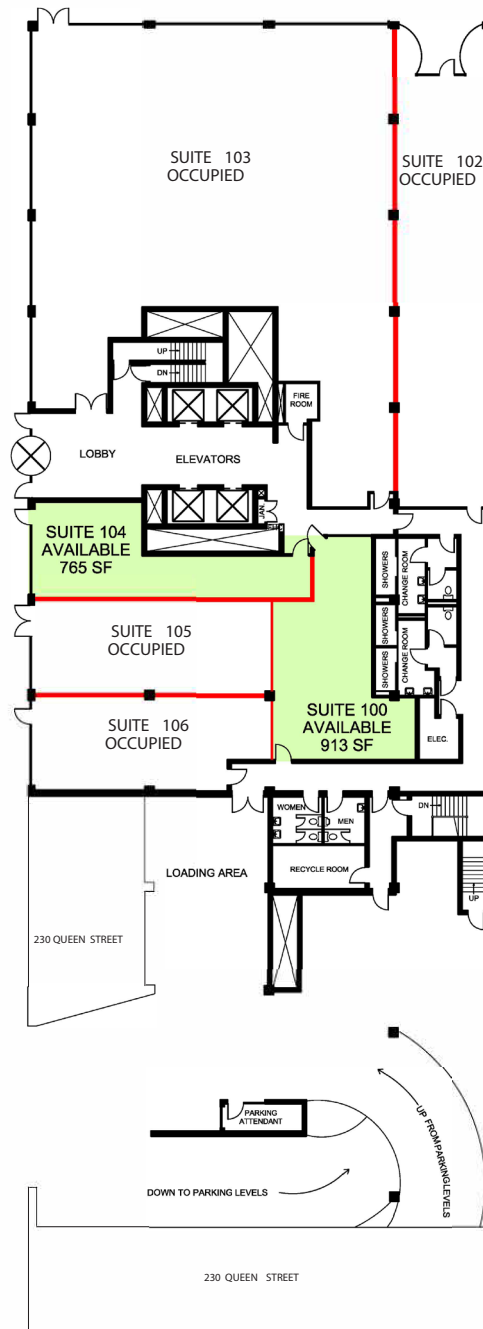
Max Francischiello, MBA

Senior Vice-President, Leasing

mfrancischiello@groupemach.com

FLOOR PLAN

GROUND FLOOR



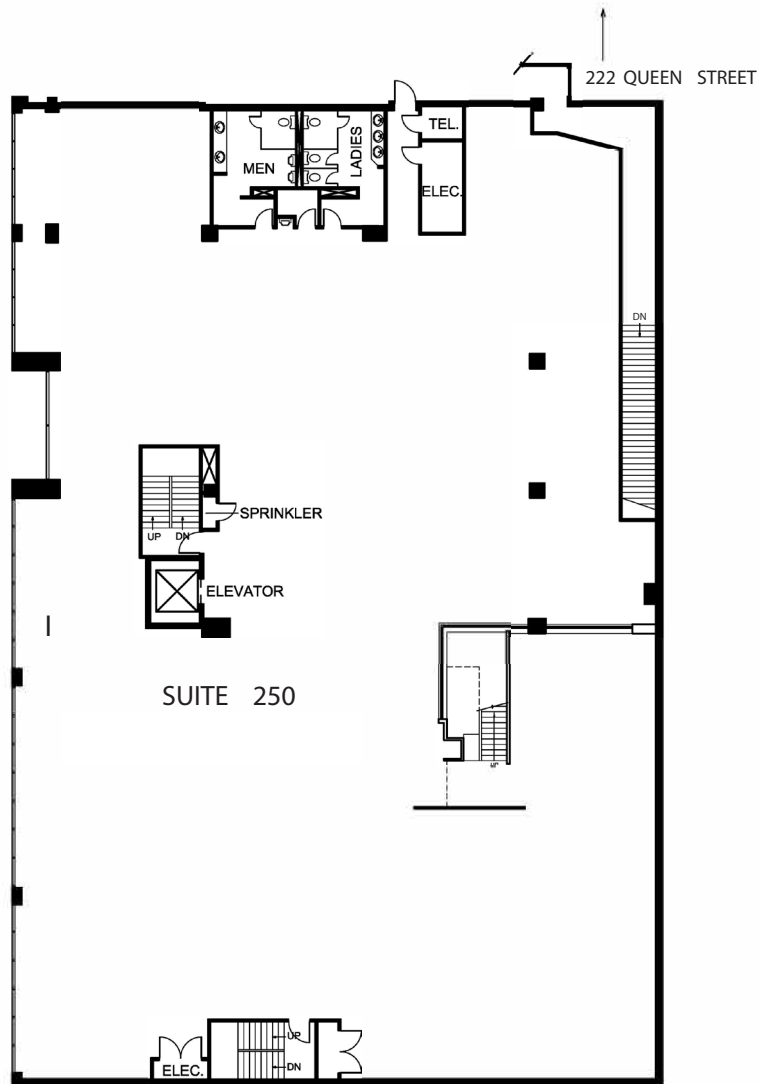
MACH

groupemach.com | [in](#) | [f](#) | [@](#)

CONTACT US
FOR LEASING OPPORTUNITIES
(613) 565-4848

FLOOR PLAN

SECOND FLOOR



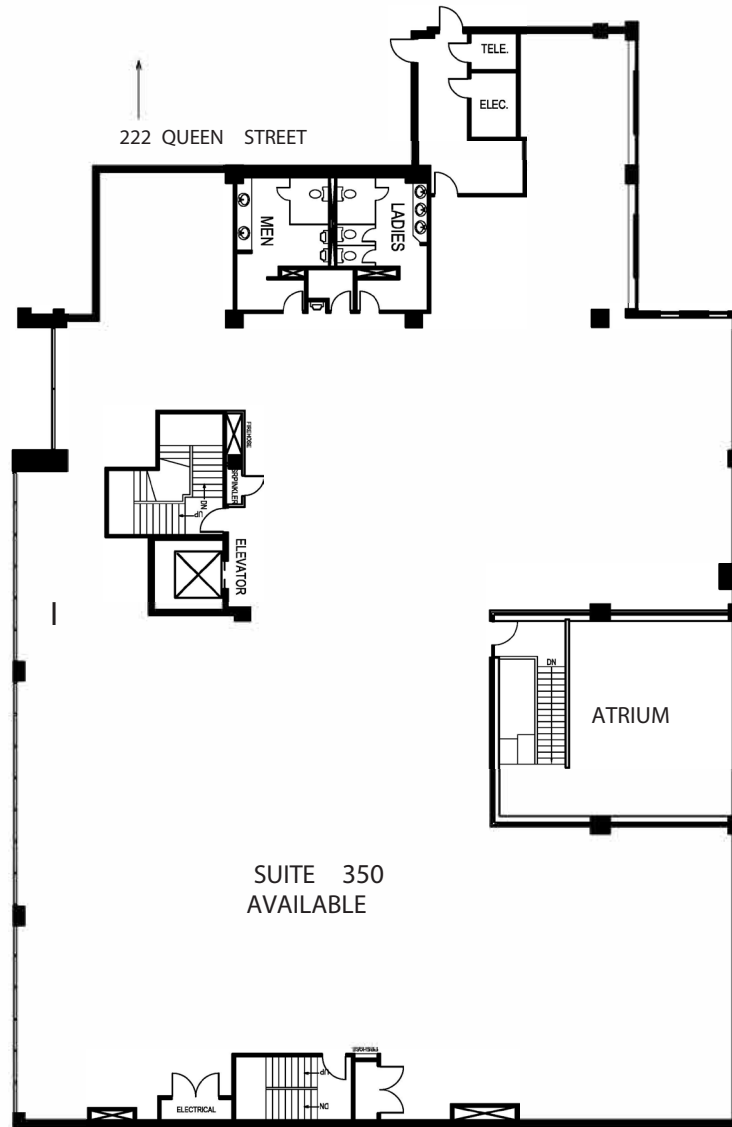
MACH

groupemach.com |  |  | 

CONTACT US
FOR LEASING OPPORTUNITIES
(613) 565-4848

FLOOR PLAN

THIRD FLOOR



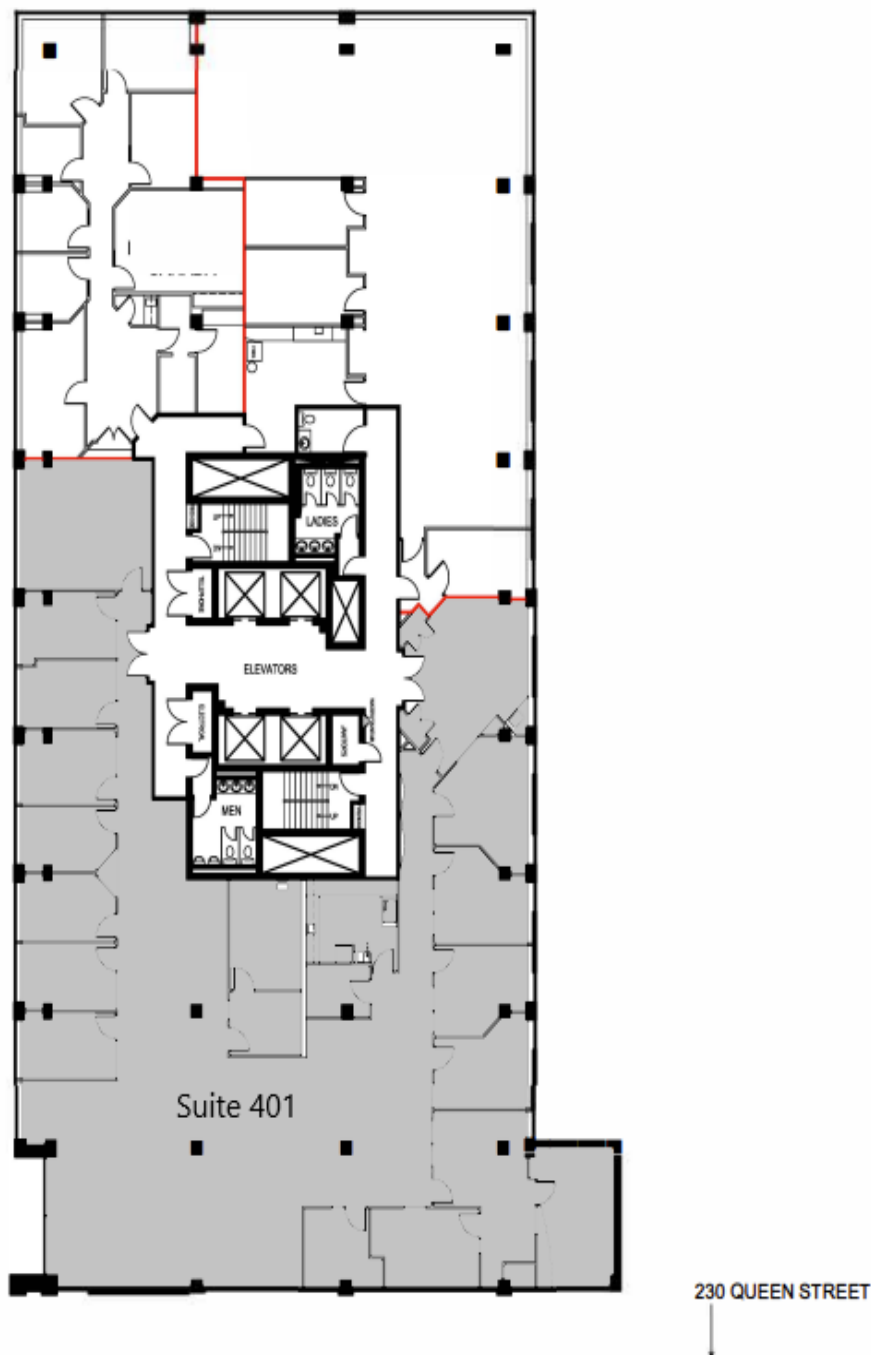
MACH

groupemach.com | [in](#) | [f](#) | [@](#)

CONTACT US
FOR LEASING OPPORTUNITIES
(613) 565-4848

FLOOR PLAN

FOURTH FLOOR



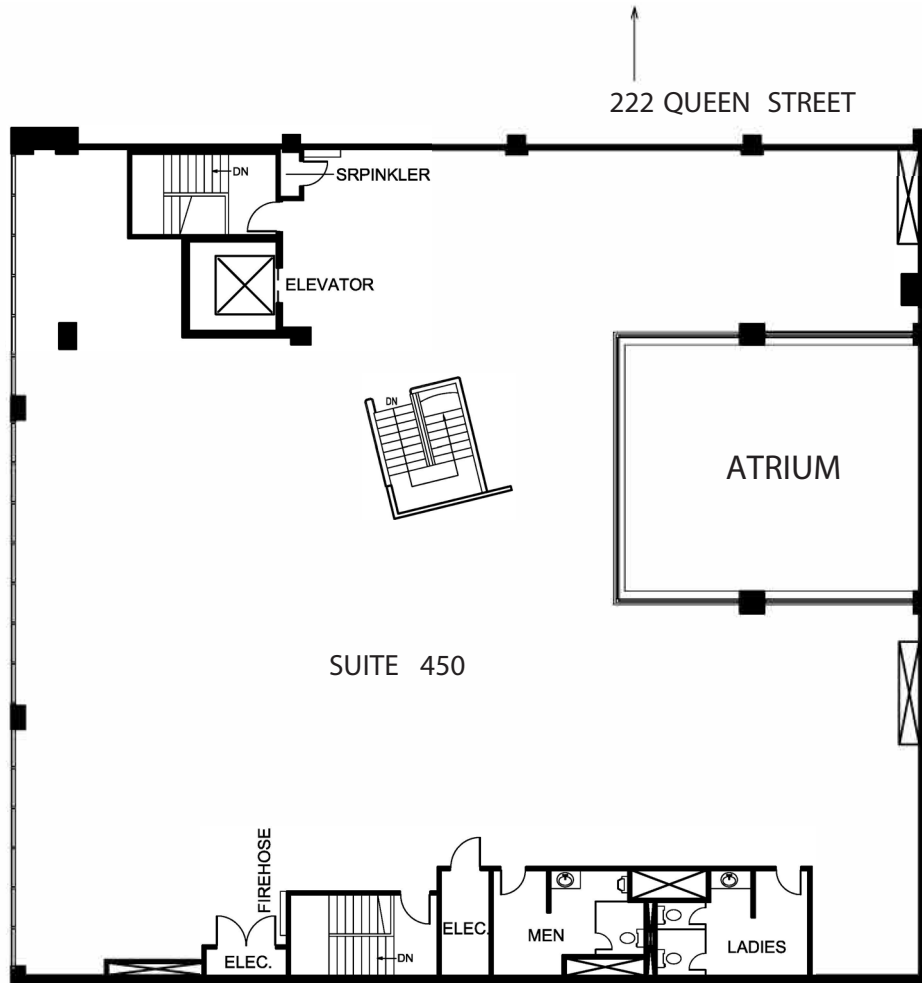
MACH

groupemach.com | [in](#) | [f](#) | [@](#)

CONTACT US
FOR LEASING OPPORTUNITIES
(613) 565-4848

FLOOR PLAN

FOURTH FLOOR



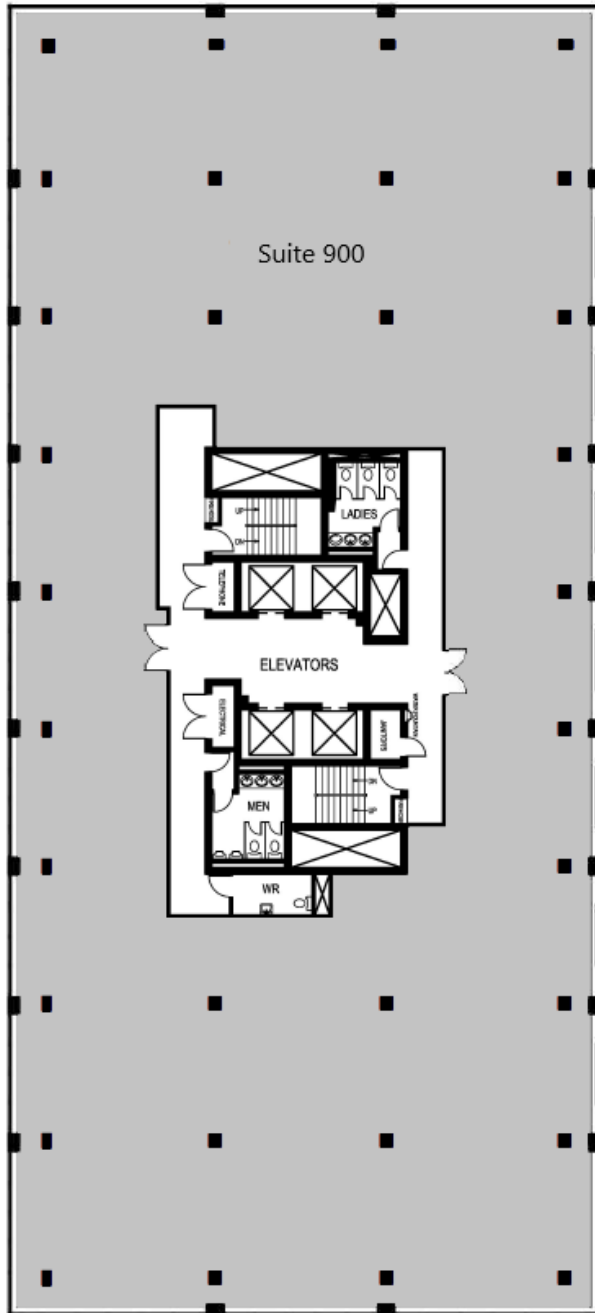
MACH

groupemach.com | [in](#) | [f](#) | [@](#)

CONTACT US
FOR LEASING OPPORTUNITIES
(613) 565-4848

FLOOR PLAN

NINTH FLOOR



0 10 50 FT.

AREA SUMMARY

SUITE No.	USABLE AREA	RENTABLE AREA
900	13,248 S.F.	13,708 S.F.
TOTAL	13,248 S.F.	13,708 S.F.

R/U RATIO = 1.034738

ABOVE INFORMATION ESTABLISHED ACCORDING
TO ANSI / BOMA Z65.1 1996

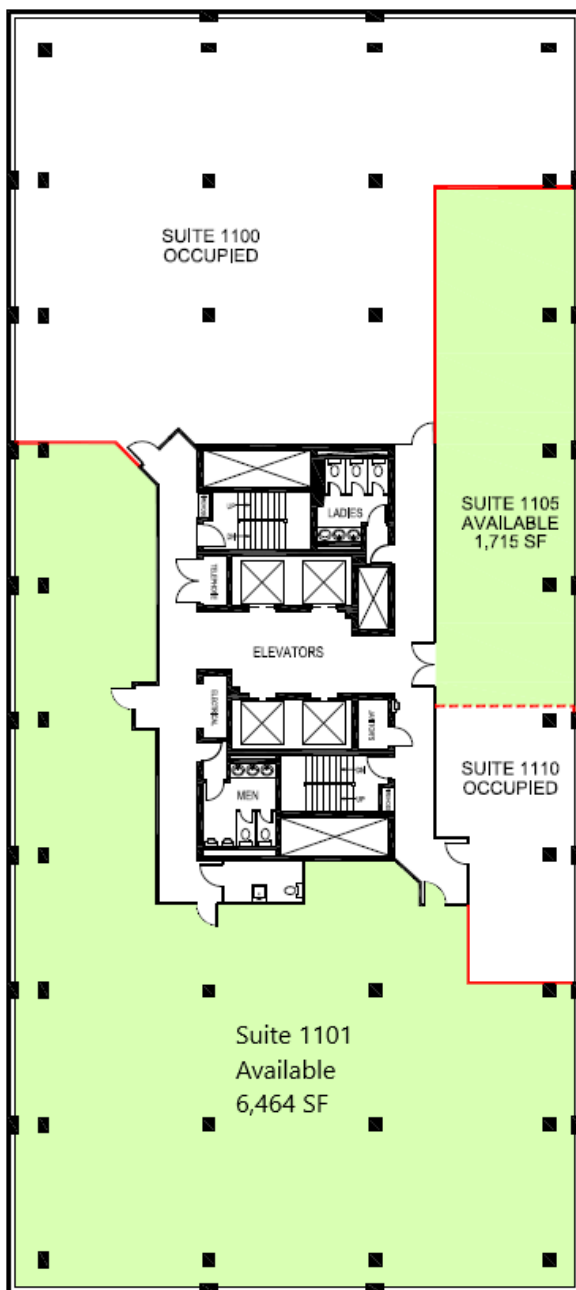
MACH

groupemach.com |  |  | 

CONTACT US
FOR LEASING OPPORTUNITIES
(613) 565-4848

FLOOR PLAN

ELEVENTH FLOOR



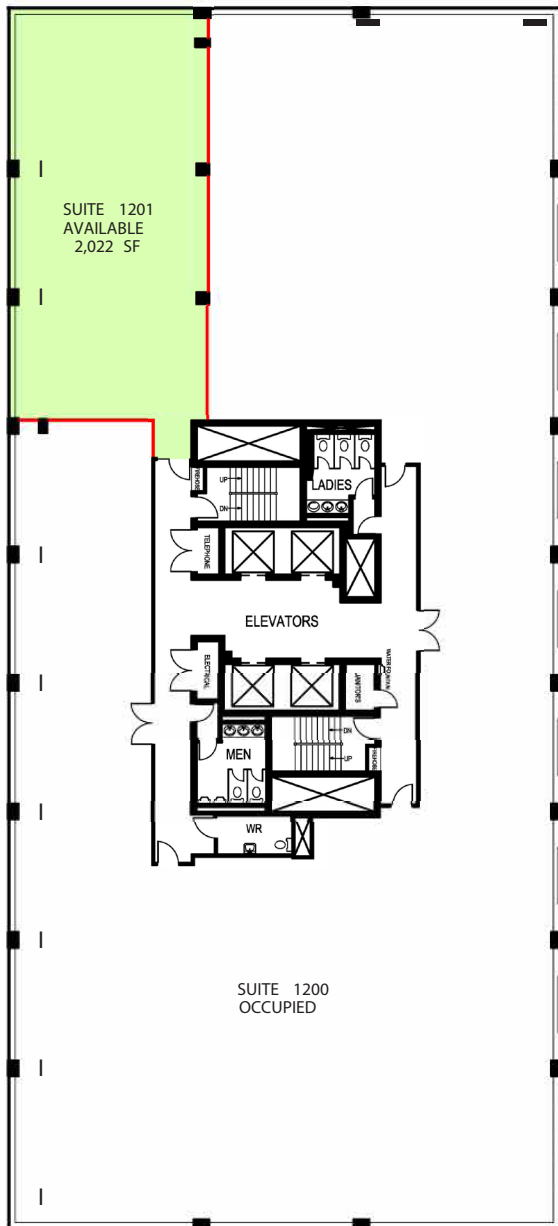
MACH

groupemach.com | [in](#) | [f](#) | [@](#)

CONTACT US
FOR LEASING OPPORTUNITIES
(613) 565-4848

FLOOR PLAN

TWELFTH FLOOR



RENTABLE AREA NOTED (SF)
AS PER ANSIBOMA 265.1 1996

D AVAILABLE

- DEMISING WALL

0 10 50 FT.

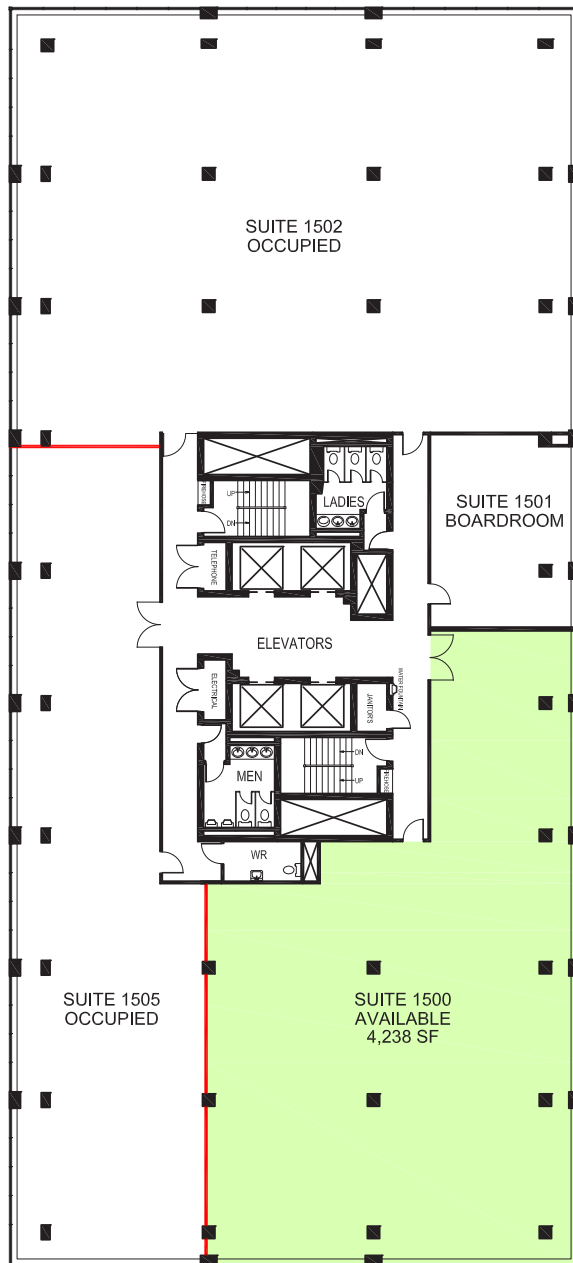
MACH

groupemach.com | | |

CONTACT US
FOR LEASING OPPORTUNITIES
(613) 565-4848

FLOOR PLAN

FIFTEENTH FLOOR



AVAILABLE
RENTABLE AREA NOTED (SF)
AS PER ANSI/BOMA Z65.1 1996

DEMISING WALL

0 10 50 FT.

MACH

groupemach.com |  |  | 

CONTACT US
FOR LEASING OPPORTUNITIES
(613) 565-4848