

A PREMIER MULTI-TENANT FACILITY | FOR LEASE

# RIVERSIDE CORPORATE CENTRE

UNIT 120 - 11780 HAMMERSMITH WAY  
RICHMOND, BC

**DISCOUNTED RATE**  
Reduced to \$17.00 Per Square Foot



## CONTACT:

### Noah Freedman

Associate Vice President  
+1 604 833 3274  
noah.freedman@cushwake.com

### Ron J Emerson

Personal Real Estate Corporation  
Vice President  
+1 604 608 5921  
ron.emerson@cushwake.com

### Graham Williams

Associate  
+1 604 837 1819  
graham.williams@cushwake.com

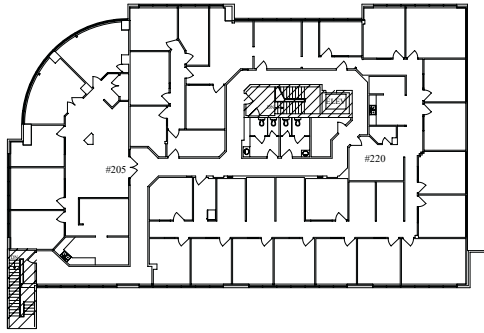


Suite 700 - 700 West Georgia Street  
PO Box 10023, Pacific Centre  
Vancouver, BC V7Y 1A1  
+1 604 683 3111

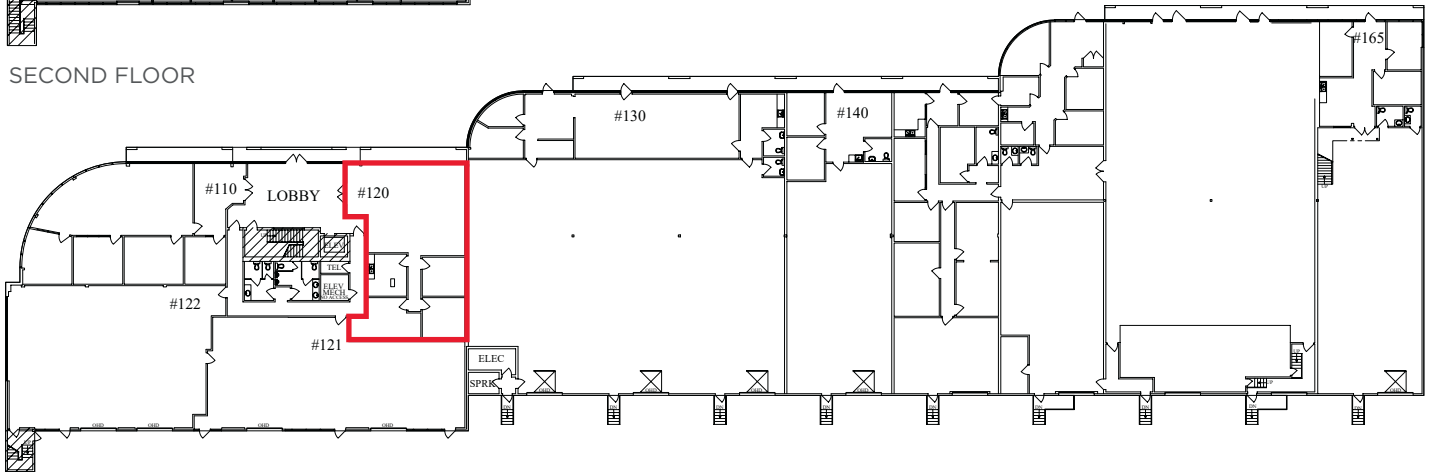
[cushmanwakefield.ca](http://cushmanwakefield.ca)



FLOOR PLAN



SECOND FLOOR



MAIN FLOOR

AVAILABLE AREA

Office Area **1,771 SF**

BASIC RENT

**\$17.00 psf**

TAXES & OPERATING COSTS

Budgeted at **\$9.06 psf for 2024**

AVAILABLE

Immediately

COMMENTS

Providing a newly renovated office space at Riverside Corporate Centre, offering a rare opportunity for a main floor office with impeccable modern amenities. Situated within minutes of restaurants, shopping, and banking facilities, this prime location provides excellent visibility and accessibility. With easy access to major transportation routes like Highway 99, Steveston Highway, and BC Transit, commuting to and from the centre is convenient for employees and clients alike.

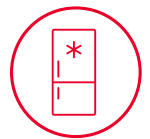
FEATURES



Newly renovated office space



Excellent corporate identity



Newly renovated kitchenette



Abundant parking



Retail amenities close by

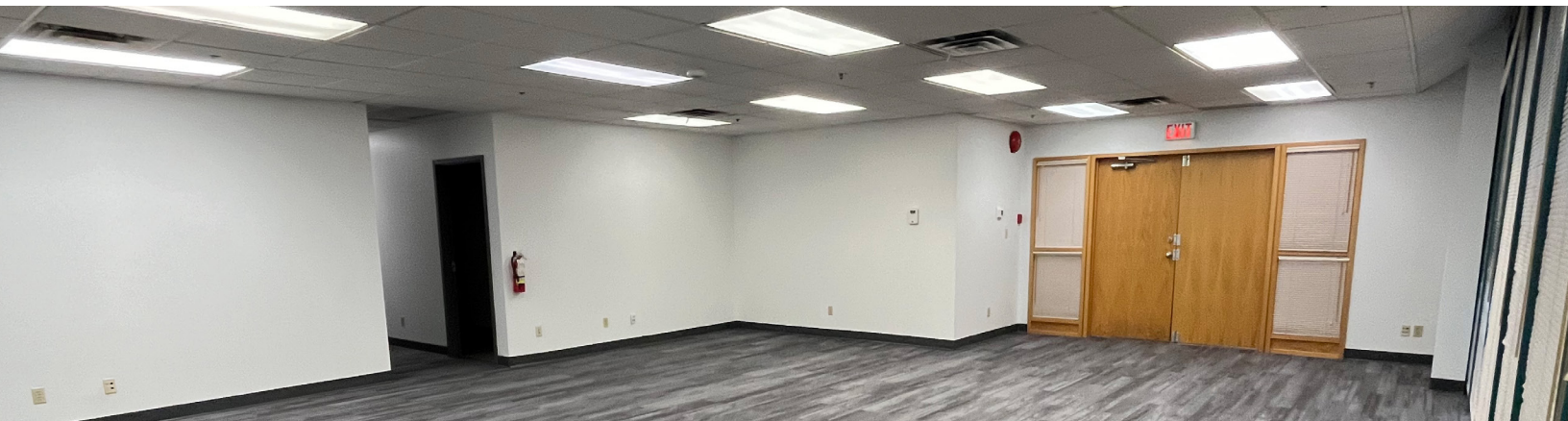


Transit oriented site



Three (3) newly renovated offices

**UNIT 120 - 11780 HAMMERSMITH WAY | RICHMOND, BC**



**Noah Freedman**  
Associate Vice President  
+1 604 833 3274  
noah.freedman@cushwake.com

**Ron J Emerson**  
Personal Real Estate Corporation  
Vice President  
+1 604 608 5921  
ron.emerson@cushwake.com

**Graham Williams**  
Associate  
+1 604 837 1819  
graham.williams@cushwake.com

