



OFFICE SPACE FOR LEASE

8171 Ackroyd Rd., Richmond

Sanjay Sudra | 604.331.5256 | ssudra@warringtonpci.com

wpm

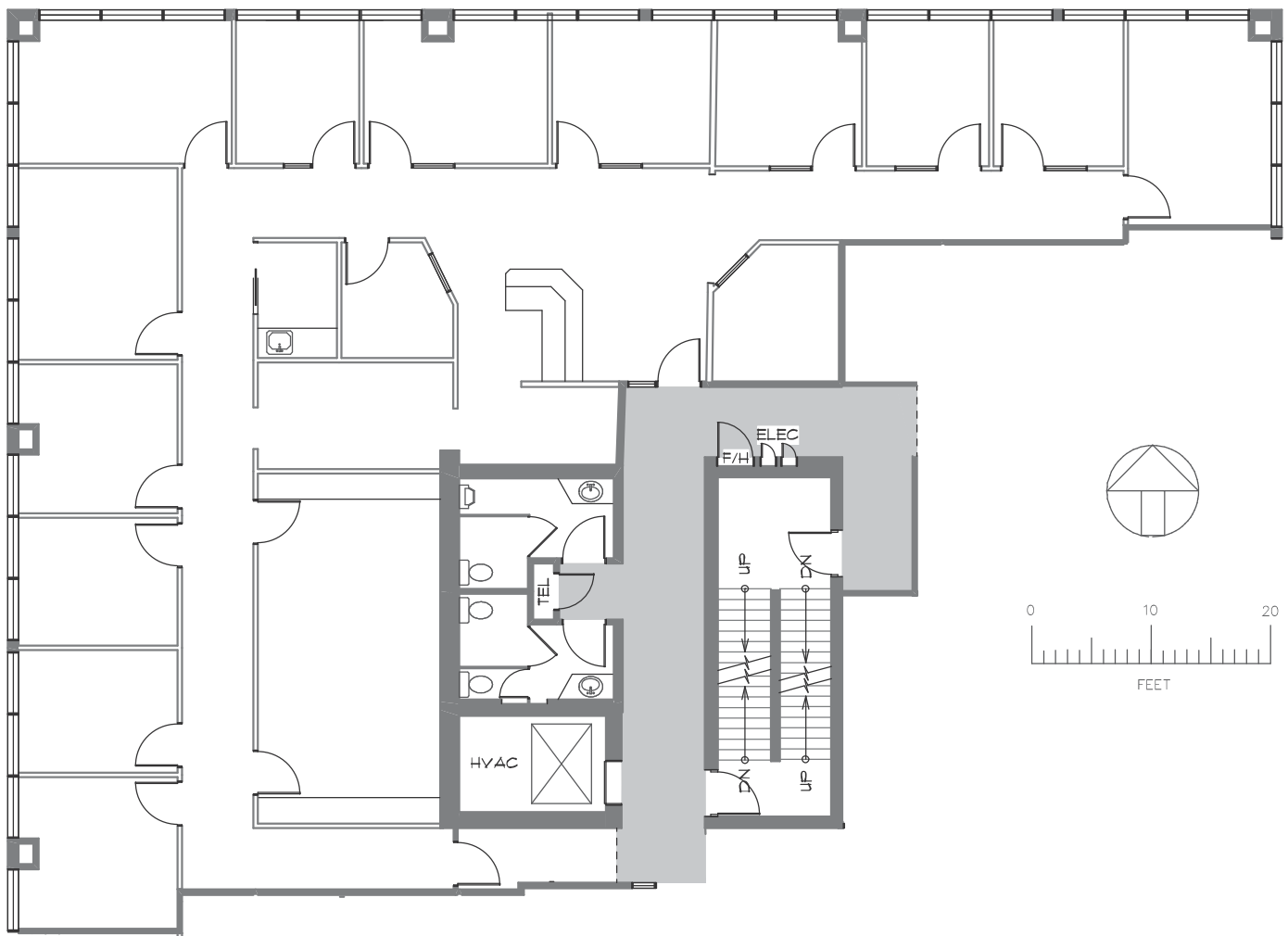
WARRINGTON PCI
MANAGEMENT

#3000 - 8171 Ackroyd Rd., Richmond

BASIC RENT: CONTACT LISTING AGENT

Rentable Area: 3,813sf | Available Immediately

Direct exposure to elevators with 13 perimeter offices, boardroom, and lunch room.



SANJAY SUDRA

604 331 5256

ssudra@warringtonpci.com

300 - 1030 West Georgia St., Vancouver, BC V6E 2Y3

E. & O.E.: The information contained herein was obtained from sources which we deem reliable, and while thought to be correct, is not guaranteed by Warrington PCI Management.



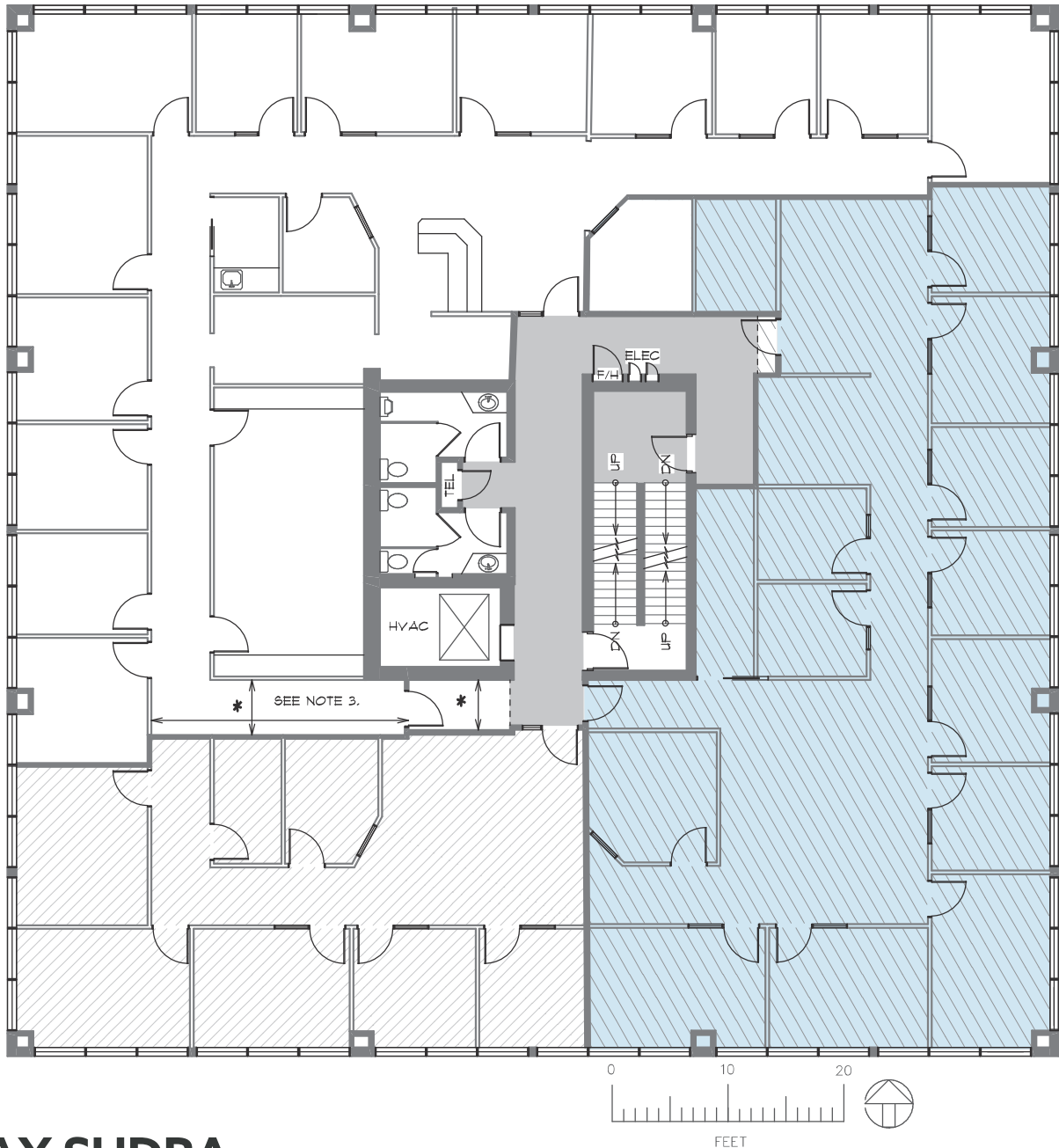
**WARRINGTON PCI
MANAGEMENT**

#3030- 8171 Ackroyd Rd., Richmond

BASIC RENT: CONTACT LISTING AGENT

Rentable Area: 2,911sf | Available Immediately

Roomy reception area, several perimeter offices and space for well-lit corner boardroom



SANJAY SUDRA

604 331 5256

ssudra@warringtonpci.com

300 – 1030 West Georgia St., Vancouver, BC V6E 2Y3

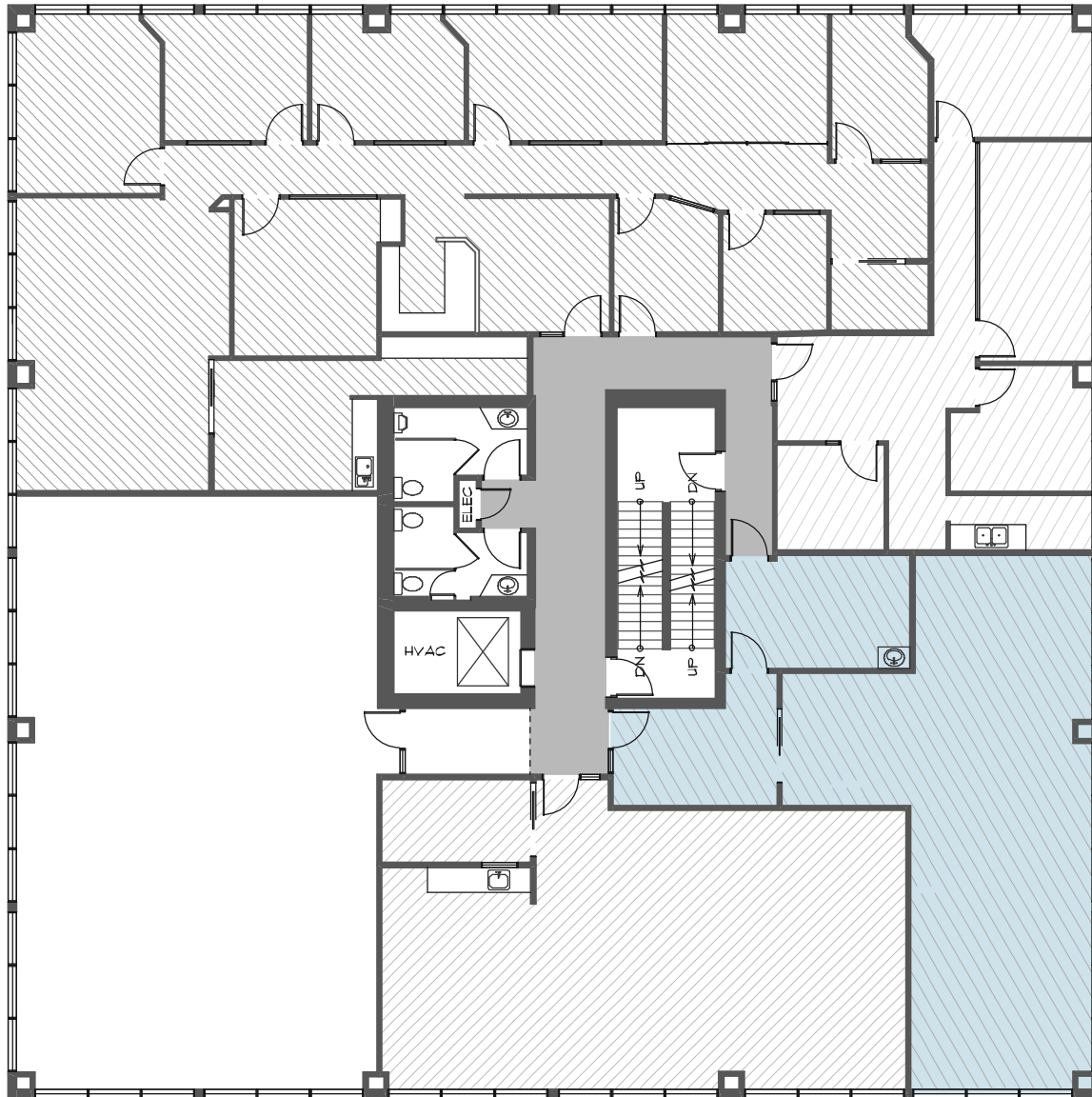
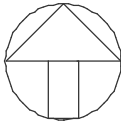
E. & O.E.: The information contained herein was obtained from sources which we deem reliable, and while thought to be correct, is not guaranteed by Warrington PCI Management.

#4030- 8171 Ackroyd Rd., Richmond

BASIC RENT: CONTACT LISTING AGENT

Rentable Area: 1,251sf | Available Immediately

Open and bright corner unit with space for reception



SANJAY SUDRA

604 331 5256

ssudra@warringtonpci.com

300 – 1030 West Georgia St., Vancouver, BC V6E 2Y3

E. & O.E.: The information contained herein was obtained from sources which we deem reliable, and while thought to be correct, is not guaranteed by Warrington PCI Management.



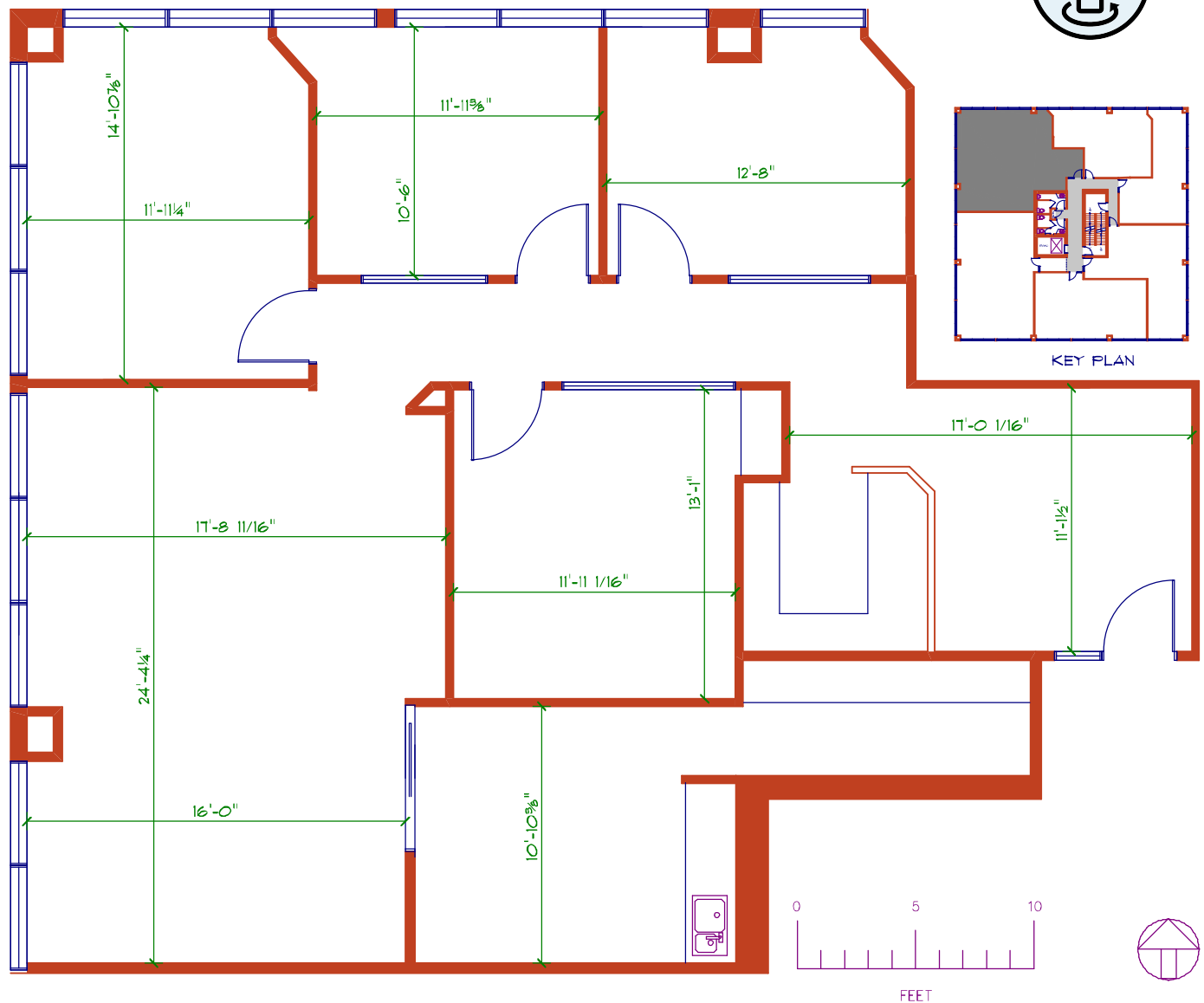
**WARRINGTON PCI
MANAGEMENT**

#4070 - 8171 Ackroyd Rd., Richmond

BASIC RENT: CONTACT LISTING AGENT

Rentable Area: 1,858sf | Available Immediately

Unit contains 3 private offices with open working spaces. Views of mountains to the North.



SANJAY SUDRA

604 331 5256

ssudra@warringtonpci.com

300 - 1030 West Georgia St., Vancouver, BC V6E 2Y3

E. & O.E.: The information contained herein was obtained from sources which we deem reliable, and while thought to be correct, is not guaranteed by Warrington PCI Management.



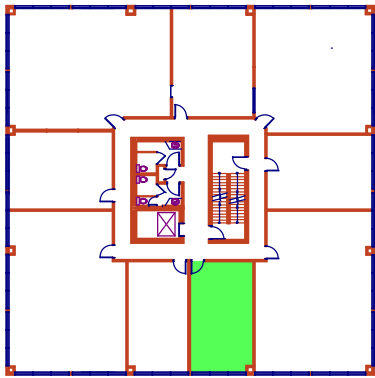
**WARRINGTON PCI
MANAGEMENT**

#5050 - 8171 Ackroyd Rd., Richmond

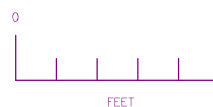
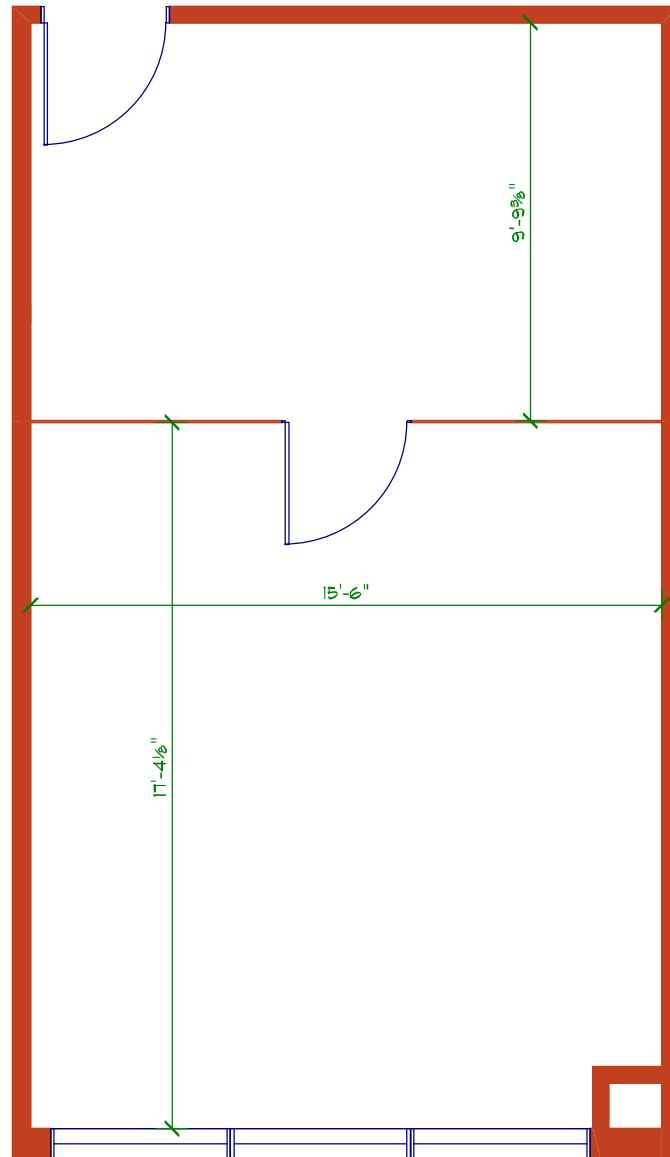
BASIC RENT: CONTACT LISTING AGENT

Rentable Area: 537sf | Available Immediately

Large and bright office space with roomy reception



KEY PLAN



SANJAY SUDRA

604 331 5256

ssudra@warringtonpci.com

300 - 1030 West Georgia St., Vancouver, BC V6E 2Y3

E. & O.E.: The information contained herein was obtained from sources which we deem reliable, and while thought to be correct, is not guaranteed by Warrington PCI Management.



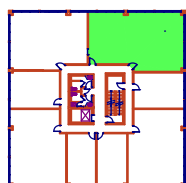
**WARRINGTON PCI
MANAGEMENT**

#5020-5090 - 8171 Ackroyd Rd., Richmond

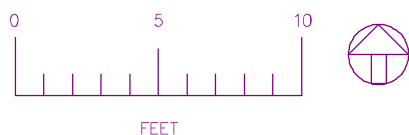
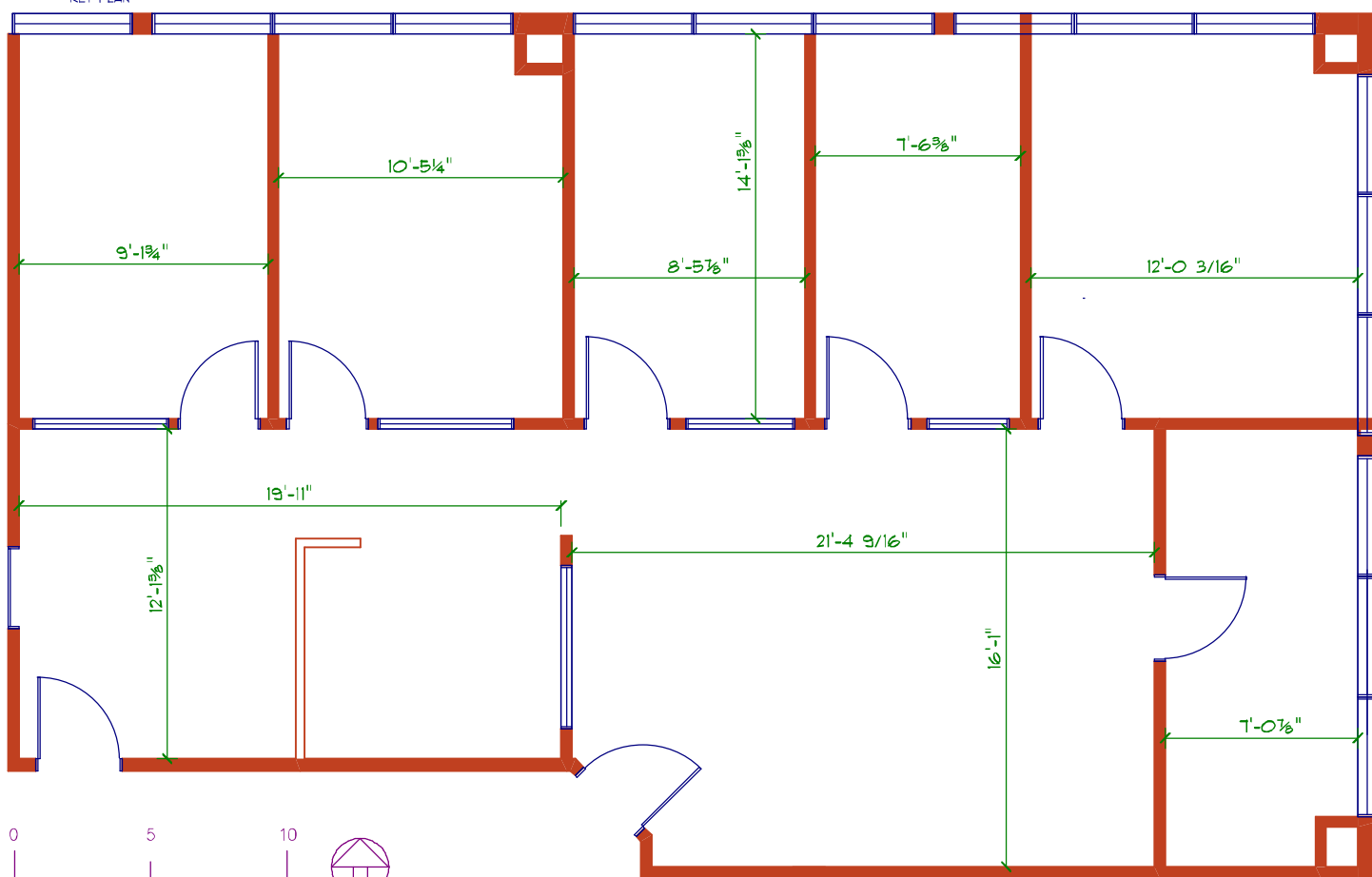
BASIC RENT: CONTACT LISTING AGENT

Rentable Area: 1,781sf | Available Immediately

Nicely built-out space with several perimeter offices, space for reception, and open working area



KEY PLAN



SANJAY SUDRA

604 331 5256

ssudra@warringtonpci.com

300 - 1030 West Georgia St., Vancouver, BC V6E 2Y3

E. & O.E.: The information contained herein was obtained from sources which we deem reliable, and while thought to be correct, is not guaranteed by Warrington PCI Management.



**WARRINGTON PCI
MANAGEMENT**

Vancouver International Airport

Lansdowne Station



Canada Line Skytrain
No. 3 Road

Richport Town Centre
8171 Ackroyd Rd.



Starbucks



White Spot

WPM

WARRINGTON PCI
MANAGEMENT

Ackroyd Road

Property Features

1. Close proximity to numerous amenities such as grocery, restaurants, retail, transit, and more
2. 6 minute walk to Lansdowne Skytrain Station
3. Less than 1km to Richmond Centre
4. Walking distance to Canada's largest T&T Supermarket
5. Retail connected to property
6. 2nd level reserve parking