



First Capital Place

960 Quayside Drive
New Westminster, BC

Property Details



Basic Rent
Contact Listing Agent



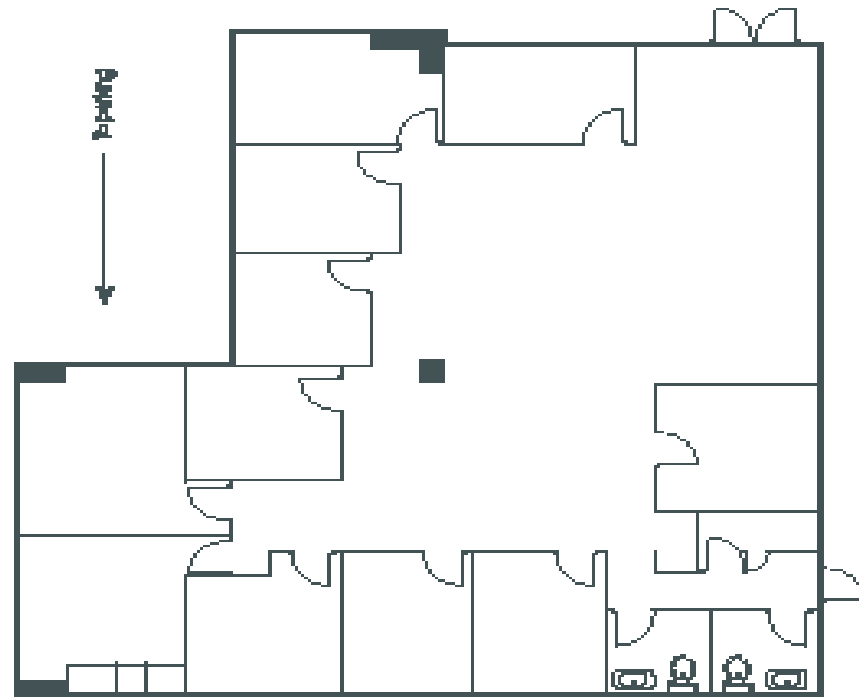
Parking
1 stall per 670 SF leased
\$125.00/stall/month + taxes (random)



Additional Rent
\$19.06 PSF (2024 estimate)
Including in-suite janitorial and utilities

Suite 103 - 3,700 SF Available Immediately

- + 9 Private Offices
- + Reception
- + Copy Room
- + Open Area Workstations
- + Kitchen
- + In-Suite Washrooms

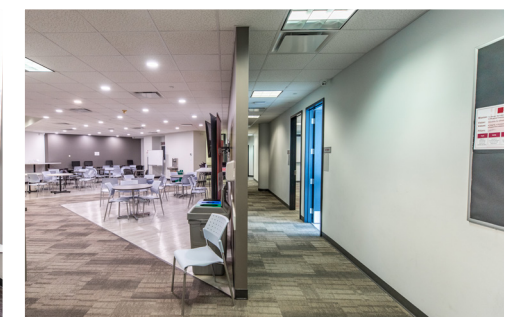


Not to scale



Suite 106 & 108 7,740 SF Available Sept 1, 2024 (possibly sooner)

- + 5 Large Classrooms
- + Reception
- + Open Study Area
- + Assembly Zoned
- + Kitchen/Lounge
- + In-Suite Washroom
- + Lobby Exposure
- + Furniture Negotiable



Public Transit

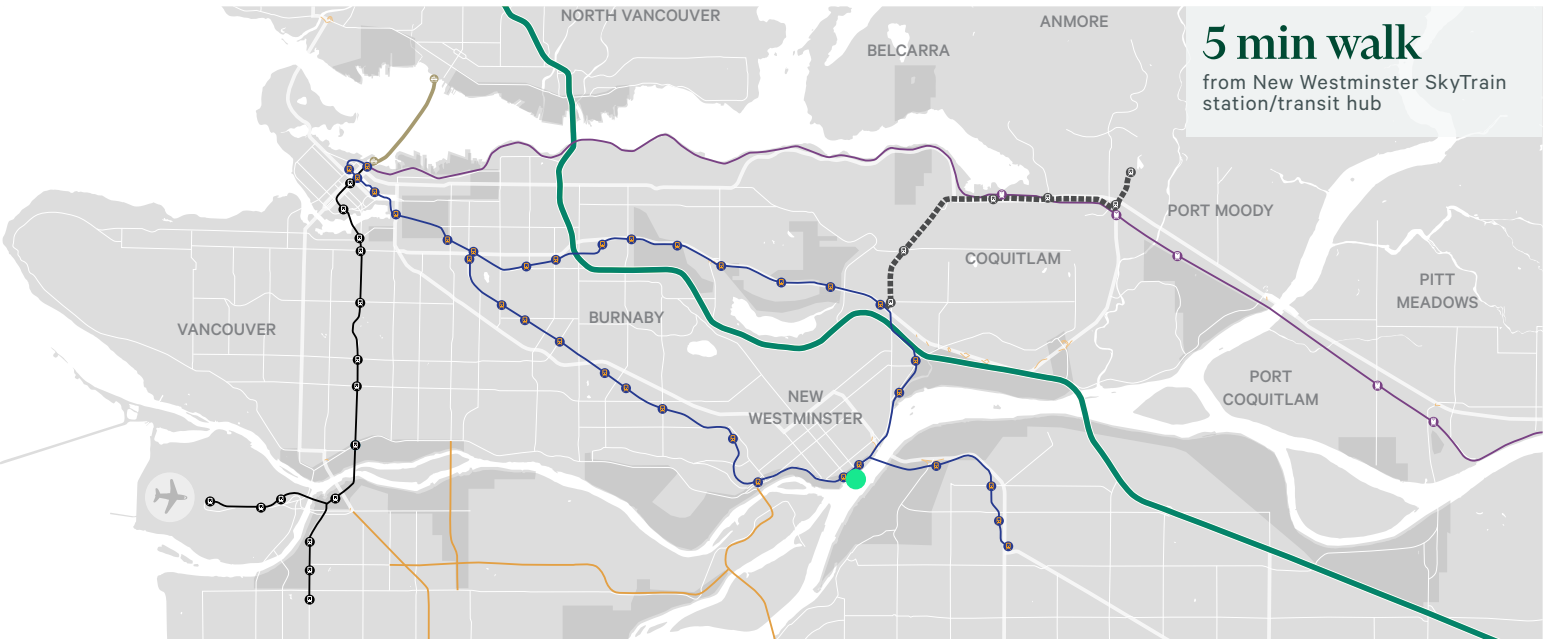
16 min
Burnaby

13 min
Surrey

34 min
Downtown Vancouver

5 min walk

from New Westminster SkyTrain station/transit hub



Located within the Quay, and a five (5) minute walk from Columbia Square Plaza and to Westminster Station. Convenient access to a variety of shops, services, restaurants and amenities.



Contact Agents

Luke Gibson

Personal Estate Corporation
Senior Vice President | Office Properties
+1 604 662 5142
luke.gibson@cbre.com

Michael White

Vice President | Office Properties
+1 604 662 5120
michael.rm.white@cbre.com

This disclaimer shall apply to CBRE Limited, Real Estate Brokerage, and to all other divisions of the Corporation; to include all employees and independent contractors ("CBRE"). The information set out herein, including, without limitation, any projections, images, opinions, assumptions and estimates obtained from third parties (the "Information") has not been verified by CBRE, and CBRE does not represent, warrant or guarantee the accuracy, correctness and completeness of the Information. CBRE does not accept or assume any responsibility or liability, direct or consequential, for the Information or the recipient's reliance upon the Information. The recipient of the Information should take such steps as the recipient may deem necessary to verify the Information prior to placing any reliance upon the Information. The Information may change and any property described in the Information may be withdrawn from the market at any time without notice or obligation to the recipient from CBRE. CBRE and the CBRE logo are the service marks of CBRE Limited and/or its affiliated or related companies in other countries. All other marks displayed on this document are the property of their respective owners. All Rights Reserved.

Mapping Sources: Canadian Mapping Services canadamapping@cbre.com; DMTI Spatial, Environics Analytics, Microsoft Bing, Google Earth.

CBRE Limited | 1021 West Hastings Street #2500 | Vancouver, BC
www.cbre.ca

