

For Lease

**10070 King George Boulevard
Surrey, BC**

Opportunity to lease in the heart of central Surrey with direct exposure along King George Boulevard.



Nicolas Bilodeau, Senior Vice President
604 647 1336
nicolas.bilodeau@avisonyoung.com

**AVISON
YOUNG**

Property details

BUILDING SIZE
10,000 sf (approximately)

BUILDING OPERATING COSTS/TAXES (2023 ESTIMATE)
\$20.27 psf/annum

LEASE RATE
Contact listing agents

AVAILABILITY





214	Immediately
202/205	Immediately
210	Immediately

PARKING
\$45 /surface random stall
\$65 /reserved underground stall

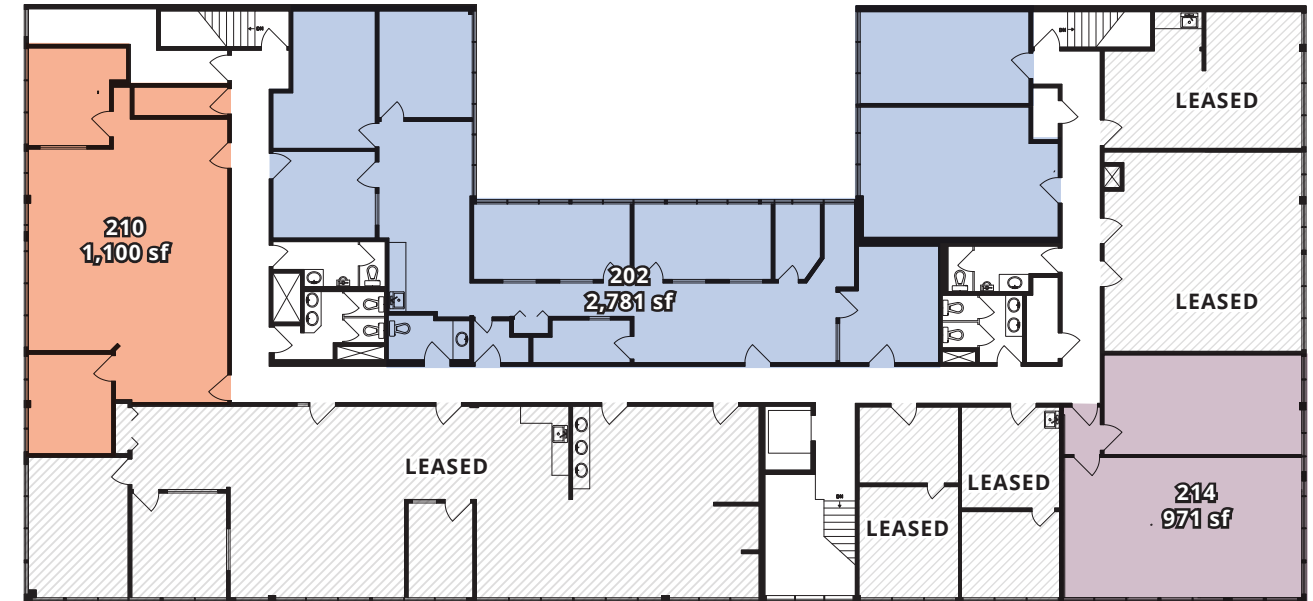
Location

Town Square is located mid-block between 100th Avenue and 102nd Avenue on the east side of King George Boulevard in central Surrey. Central City Shopping Centre, the second largest mall in Surrey, is directly across the street offering over 140 shops, restaurants, and services. Additionally, Surrey Memorial Hospital is located just a short three-minute drive away at 96th Avenue and King George Boulevard.

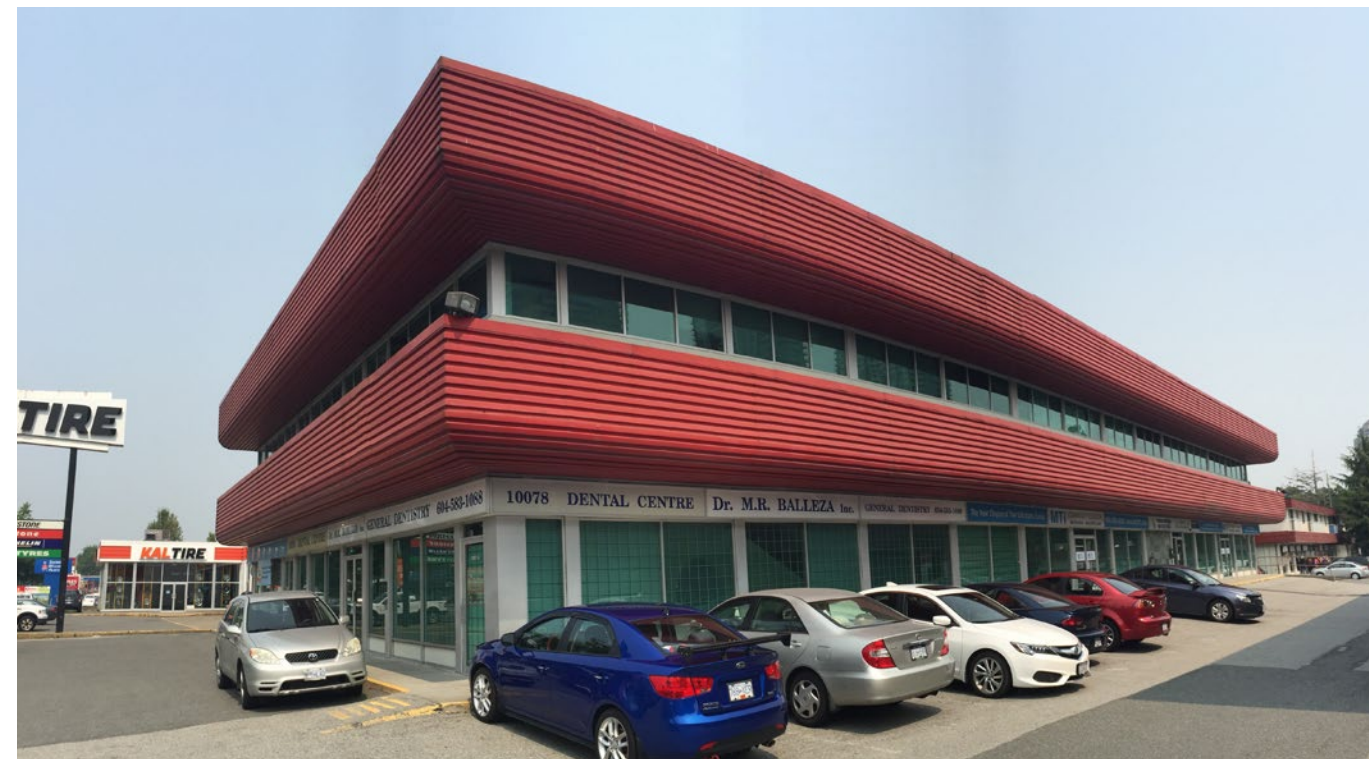
Amenities

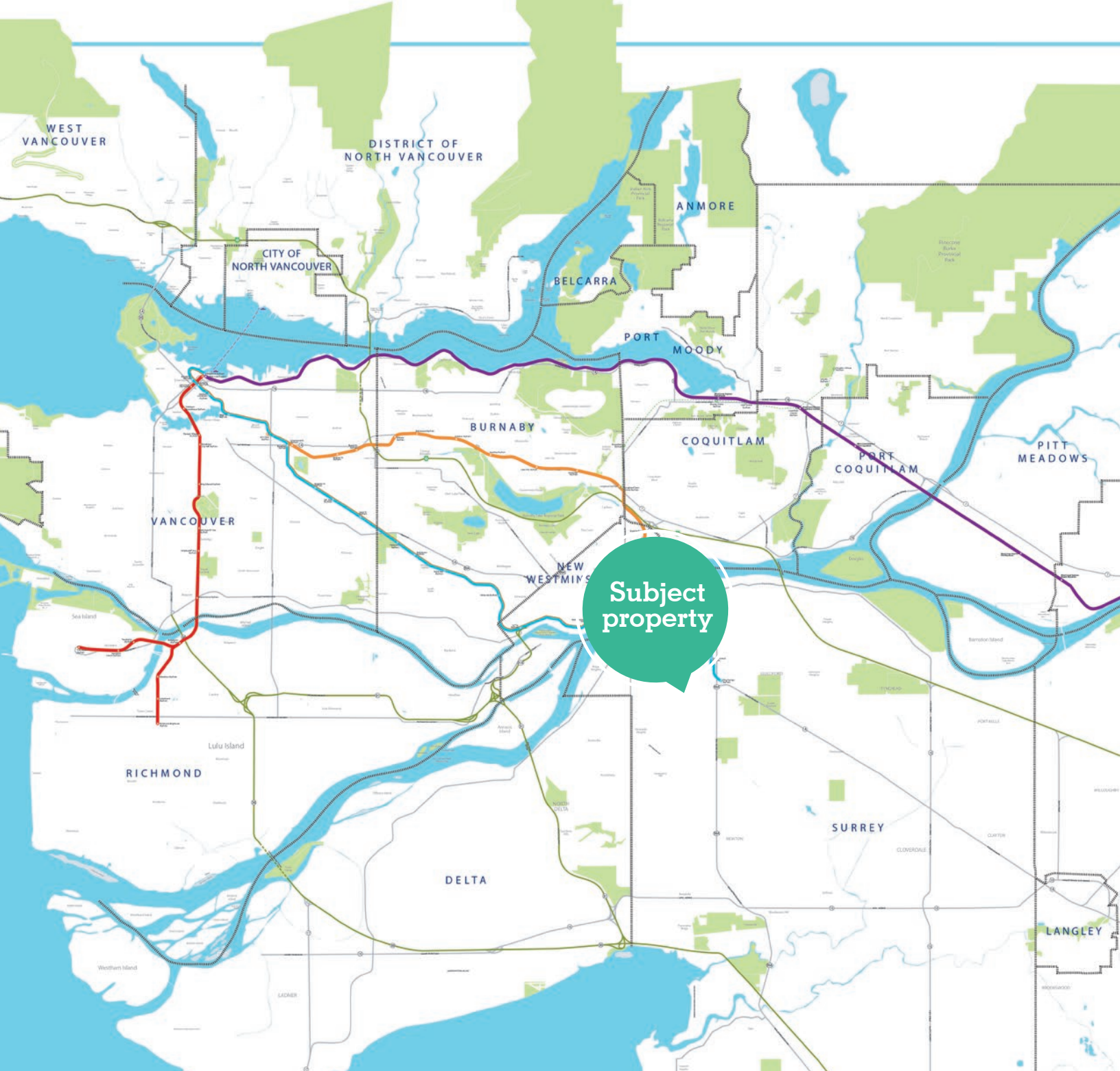
-  Proximity to Surrey Central Skytrain Station providing easy access to other municipalities across Metro Vancouver
-  Five-minute walk to Holland Park
-  Numerous restaurants, banks, coffee shops, and shopping retailers nearby
-  Convenient access to the proposed South Fraser LRT line

Floor plan



Suite #	Total (sf)	Availability	Description
214	971 sf	Immediately	Existing improvements in place, 2 large offices/meeting rooms
210	1,110 sf	Immediately	Primarily open area with 2 offices/meeting rooms
202/205	2,781 sf	Immediately	Multiple offices/meeting rooms, kitchenette and open area





Contact us for more information

Nicolas Bilodeau, Senior Vice President
604 647 1336
nicolas.bilodeau@avisonyoung.com



#2900-1055 West Georgia Street
P.O. Box 11109 Royal Centre
Vancouver, BC V6E 3P3, Canada

avisonyoung.com