

733

Cathcart Street
Montréal, Québec



Lease Terms

5 years

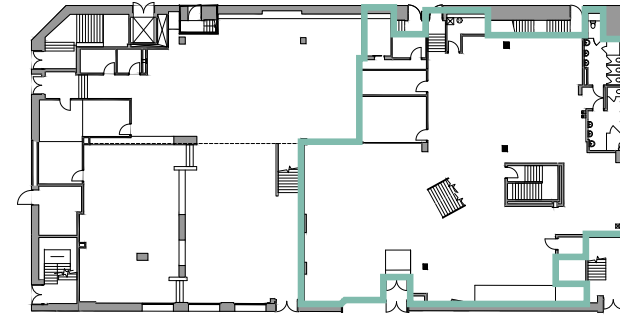
- Area
Ground floor & mezzanine: 8,628 sq. ft.
2nd floor & Atrium: 15,794 sq. ft.
Total: 24,422 sq. ft.
- Gross rent: \$40.00
- Availability: Immediate
- Hydro and In-suite cleaning:
Not included

Property Details

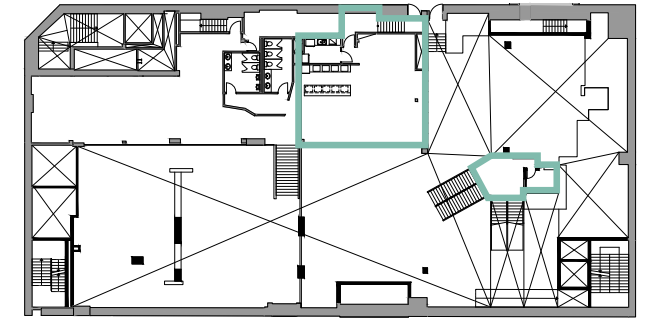
- Located on Cathcart Street, steps away from McGill College Avenue in the heart of the Central Business District across from Place Ville-Marie
- Directly connected to the underground pedestrian network, McGill and Bonaventure metro stations, the Central train station and future REM station, the Montreal Eaton Center, Promenades Cathédrale, Place Montreal Trust and many more along with all their shopping, restaurants, services and amenities
- 2nd floor tenant benefits from an atrium
- Building signage available
- Delivered in a clean Base Building condition
- 1000 amperes



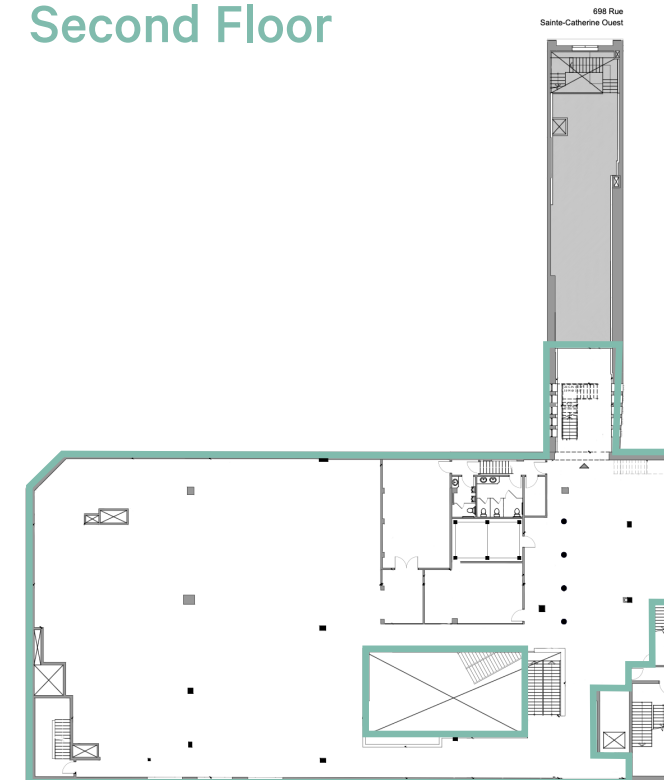
Ground Floor



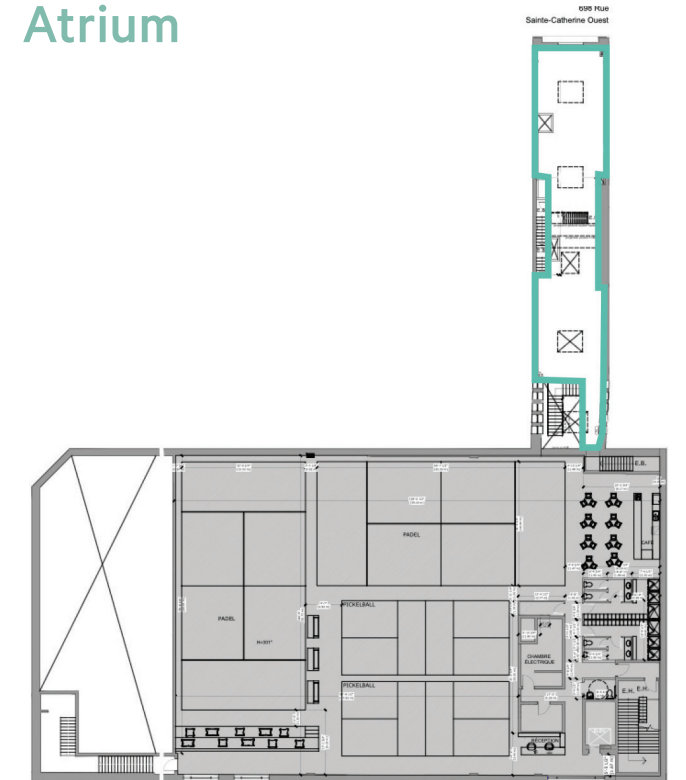
Mezzanine



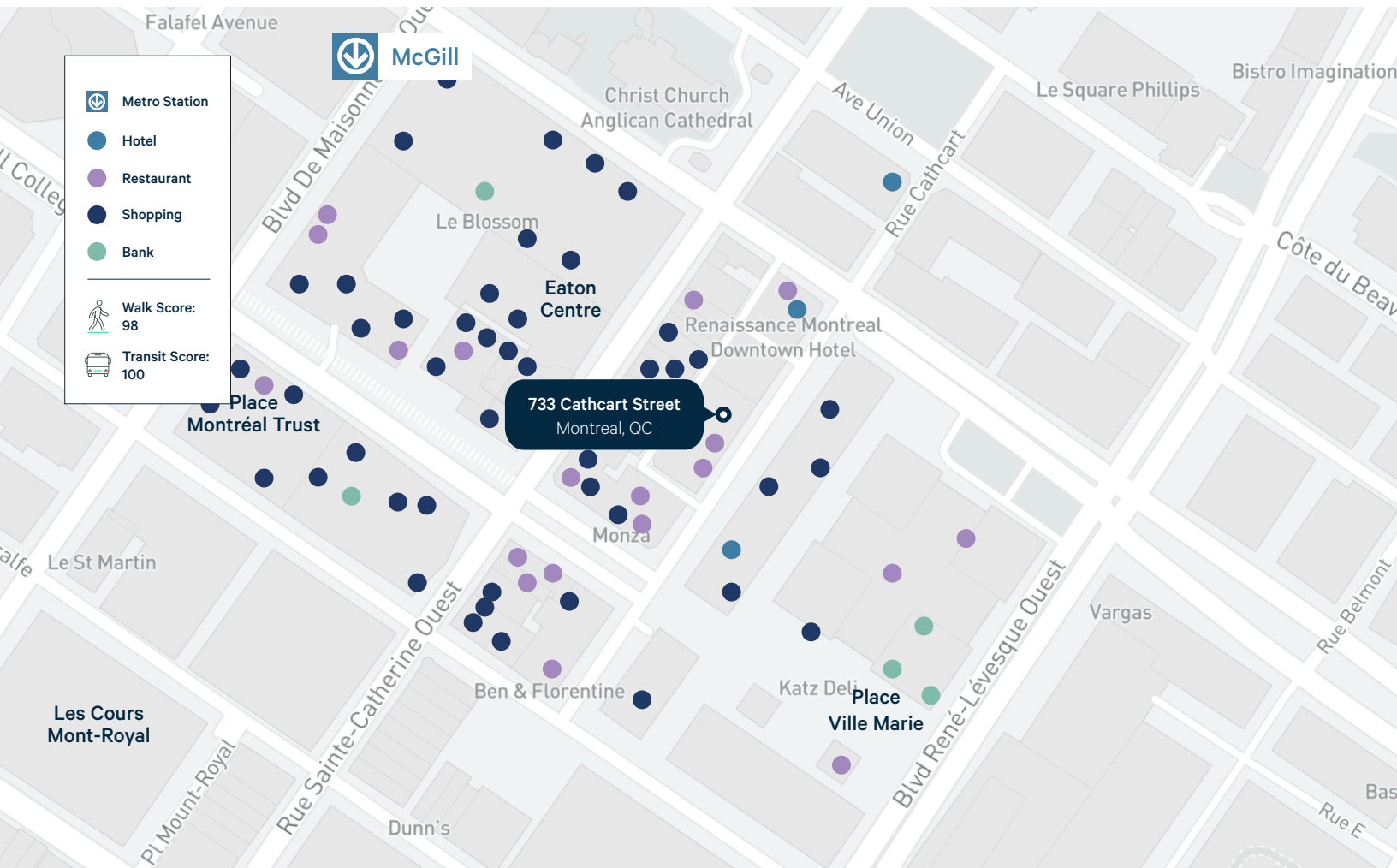
Second Floor



Atrium



Location



Contact Us

Christopher Rundle
Vice President
Real Estate Broker
+1 514 375 0818
christopher.rundle@cbre.com

Bryan Greenberg
Associate Vice President
Commercial Real Estate Broker
+1 514 375 2507
bryan.greenberg@cbre.com

Amanda Angela Herbu
Associate
Commercial Real Estate Broker
+1 514 375 0456
amanda.herbu@cbre.com

CBRE Limited, Real Estate Agency
1250 René-Lévesque Blvd West
Suite 2800, Montréal
Québec H3B 4W8
+1 514 849 6000 | www.cbre.ca

This disclaimer shall apply to CBRE Limited, Real Estate Agency, and to all other divisions of the Corporation; to include all employees and independent contractors ("CBRE"). The information set out herein, including, without limitation, any projections, images, opinions, assumptions and estimates obtained from third parties (the "Information") has not been verified by CBRE, and CBRE does not represent, warrant or guarantee the accuracy, correctness and completeness of the Information. CBRE does not accept or assume any responsibility or liability, direct or consequential, for the Information or the recipient's reliance upon the Information. The recipient of the Information should take such steps as the recipient may deem necessary to verify the Information prior to placing any reliance upon the Information. The Information may change and any property described in the Information may be withdrawn from the market at any time without notice or obligation to the recipient from CBRE. CBRE and the CBRE logo are the service marks of CBRE Limited and/or its affiliated or related companies in other countries. All other marks displayed on this document are the property of their respective owners. All Rights Reserved. Mapping Sources: Canadian Mapping Services canadamapping@cbre.com; DMTI Spatial, Environics Analytics, Microsoft Bing, Google Earth.