

Atrium on 11th

625 11th Avenue SW
Calgary, AB



Property
Highlights

PAGE 2-4

Floor
Plans

PAGE 5-6

Local
Amenities

PAGE 7

ALLIED

CBRE

Property Highlights

NET RENT	Market
ADDITIONAL RENT	\$16.37 PSF (2025)
TERM	TBD
PARKING RATE	\$300/month/stall
YEAR BUILT	1980

AVAILABILITIES

Suites	Size (SF)	DATE AVAILABLE	PARKING
Suite 205	2,856	30 Days Notice	3 Stalls
Suite 210	4,204	October 1, 2025	5 Stalls
Suite 220	2,990	30 Days Notice	4 Stalls
Suite 305	4,872	February 1, 2026	6 Stalls
Suite 310	9,041	February 1, 2026	12 Stalls

- Central Beltline location
- Aggressive rates available for short term leases
- Storage space available on lower floor
- Numerous amenities within walking distance including ReGrub Burger Bar, Last Best Brewing and Milano Coffee Roasters
- Walking distance to downtown and three blocks from the LRT



New Fitness Facility

CBRE proudly introduces Forme to the market on behalf of Allied Properties REIT. Forme offers a fitness experience for Allied tenants across their Calgary* portfolio.

The newly built fitness facility in the Vintage Towers now welcomes tenants to enjoy the endless options of fitness machinery, free weights, lockers, changerooms, showers and much more.

*Subject to landlord approval and excludes Woodstone, Local Motive and Loughheed Block.



New Conference Centre



Suite 205

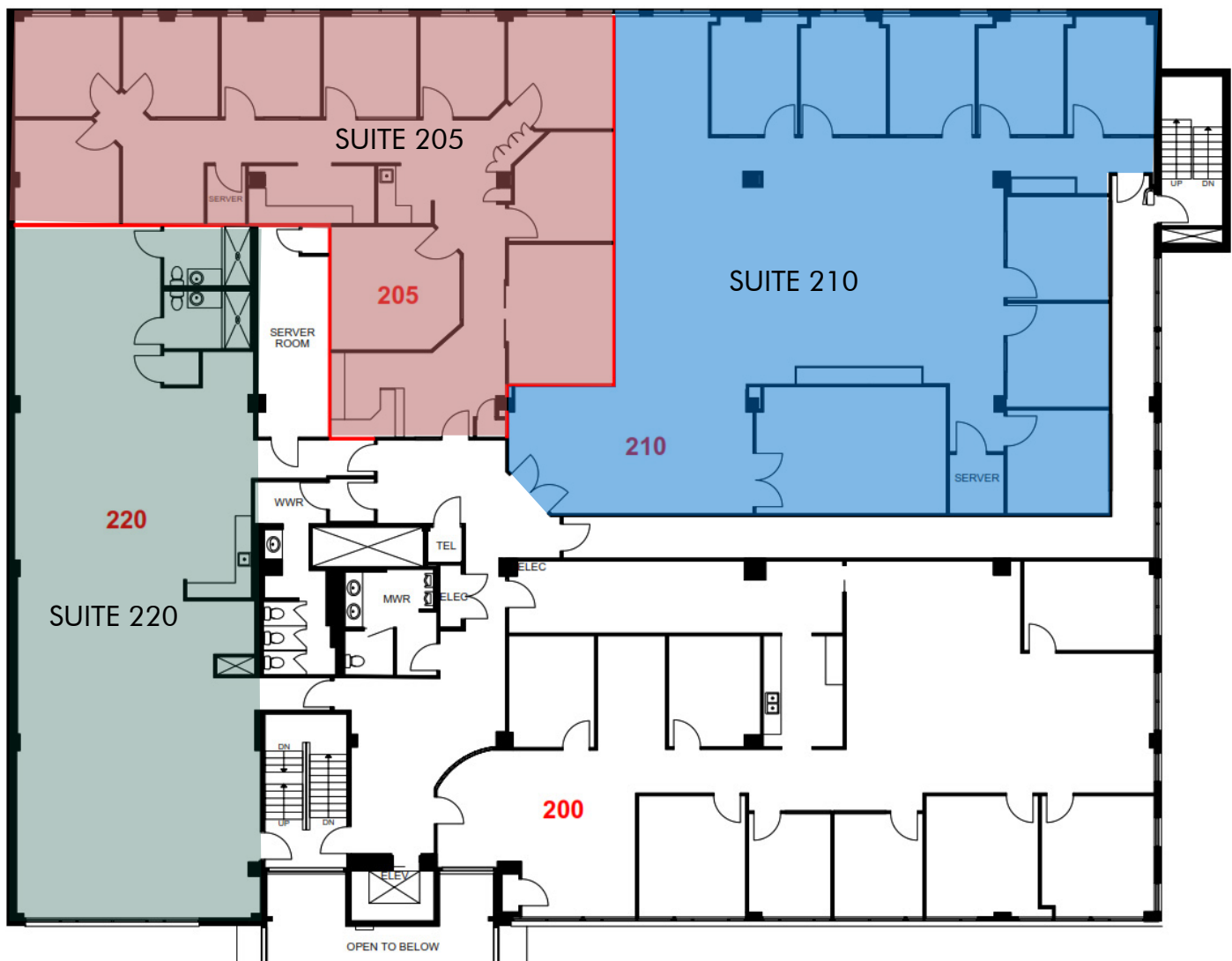
2,856 SF

Suite 210

4,204 SF

Suite 220

2,990 SF

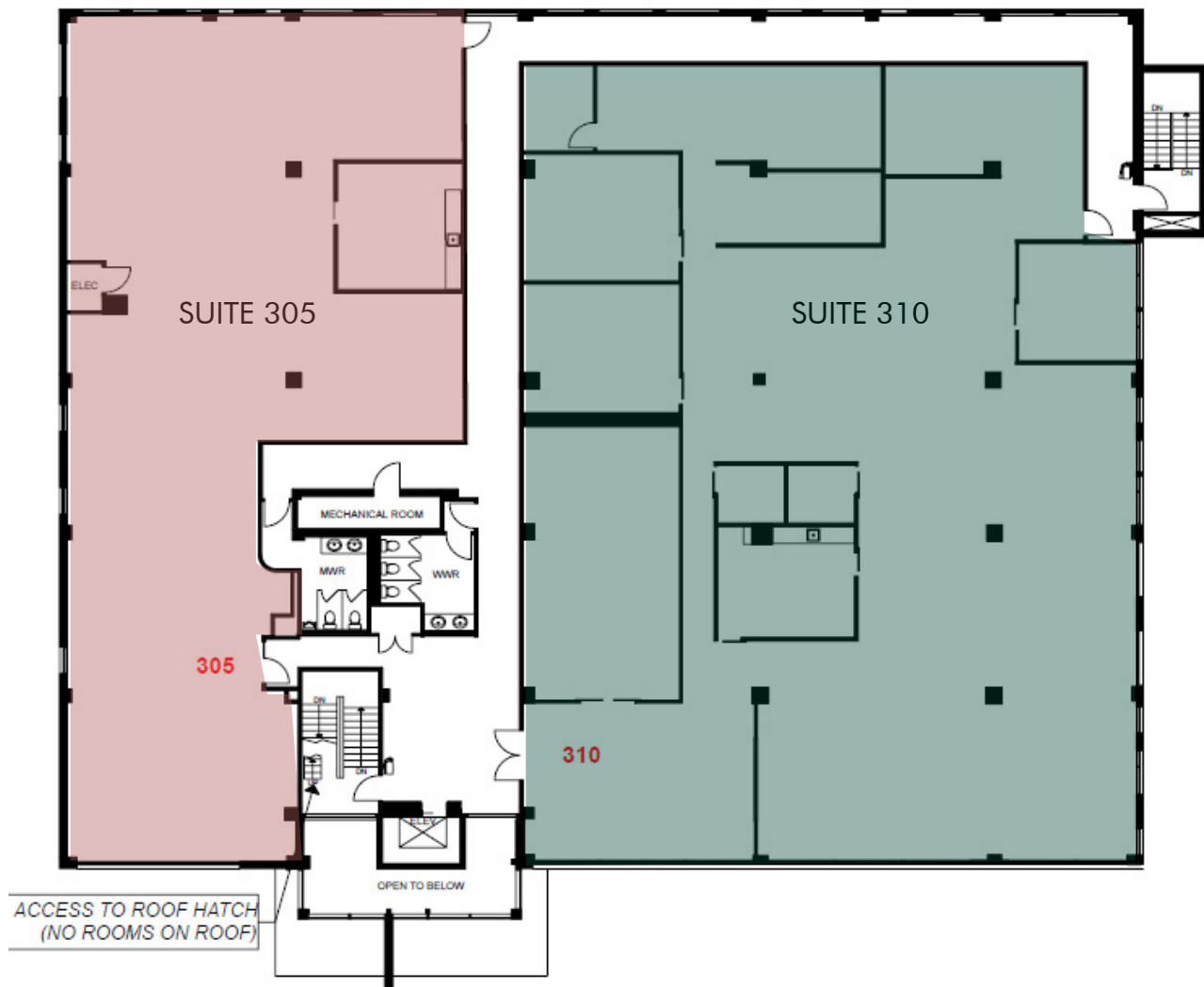


Suite 305

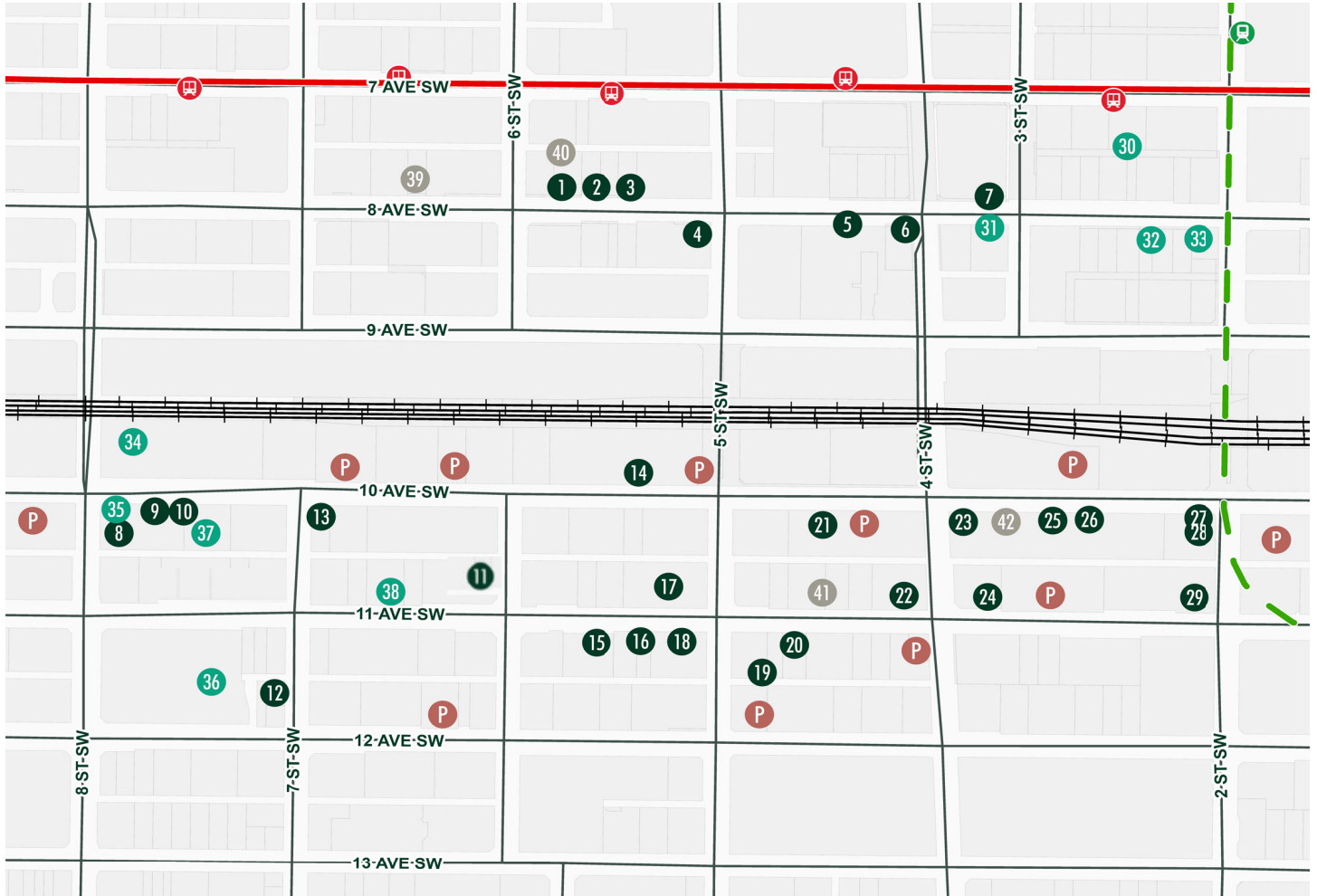
4,872 SF ✨ VIRTUAL TOUR

Suite 310

9,041 SF ✨ VIRTUAL TOUR



Local Amenities



RESTAURANTS

1. Phil & Sebastian
2. Escoba Wine Bar
3. UNTITLED Champagne Lounge
4. State & Main
5. Cucina
6. Barcelona Tavern
7. Hy's Steakhouse
8. Bonterra Trattoria
9. Wayne's Bagels
10. Holy Grill
11. Noble Pie
12. Vegan Street
13. Bridgette Bar
14. Orchard Restaurant

15. REGRUB - Beltline
16. Broken City
17. Milano Coffee
18. Last Best Brewing & Distilling
19. Canadian Pizza Unlimited
20. Singapore Sam's
21. Pampa Brazilian Steakhouse
22. Tim Horton's
23. Rodney's Oyster House
24. Starbucks
25. CRAFT Beer Market
26. National on 10th
27. Toscana Italian Grill
28. Japanese Village
29. Vintage Chophouse

SHOPPING AND SERVICES

30. The CORE
31. HSBC Bank
32. RBC Royal Bank
33. CIBC
34. MEC Calgary
35. 7-Eleven
36. Safeway
37. Atmosphere Calgary
38. Metrovino Fine Wines

FITNESS

39. Anytime Fitness
40. Freedom Fit Pass
41. Passage Studios
42. Wildcard Fitness

Atrium on 11th

625 11th Avenue SW
Calgary, AB



STUART WATSON*
Senior Vice President
+1 (403) 750-0540
stuart.watson@cbre.com

KATIE SAPIEHA*
Senior Vice President
+1 (403) 750-0529
katie.sapieha@cbre.com

TREVOR DAVIES*
Senior Vice President
+1 (403) 750-0542
trevor.davies@cbre.com

SYDNEY VON VEGESACK
Director, Leasing
+1 (587) 779-6154
svonvegesack@alliedreit.com

CBRE Limited, Real Estate Brokerage

*Sales Representative

This disclaimer shall apply to CBRE Limited, Real Estate Brokerage, and to all other divisions of the Corporation; to include all employees and independent contractors (CBRE). The information set out herein, including, without limitation, any projections, images, opinions, assumptions and estimates obtained from third parties (the Information) has not been verified by CBRE, and CBRE does not represent, warrant or guarantee the accuracy, correctness and completeness of the Information. CBRE does not accept or assume any responsibility or liability, direct or consequential, for the Information or the recipient's reliance upon the Information. The recipient of the Information should take such steps as the recipient may deem necessary to verify the Information prior to placing any reliance upon the Information. The Information may change and any property described in the Information may be withdrawn from the market at any time without notice or obligation to the recipient from CBRE. CBRE and the CBRE logo are the service marks of CBRE Limited and/or its affiliated or related companies in other countries. All other marks displayed on this document are the property of their respective owners. All Rights Reserved. Mapping Sources: Canadian Mapping Services canadamapping@cbre.com; DMTI Spatial, EnviroNics Analytics, Microsoft Bing, Google Earth.

ALLIED

CBRE