



# Douglasdale Executive Centre

**EAST**

3445 114 Avenue SE

**Stuart Watson**  
Senior Vice President  
403 750 0540  
stuart.watson@cbre.com

**Katie Sapieha**  
Senior Vice President  
403 750 0529  
katie.sapieha@cbre.com

**CBRE Limited, Real Estate Brokerage**  
525 8 Ave SW, Suite 3200  
Calgary, Alberta, T2P 1G1  
+1 403 263-4444 • [www.cbre.com](http://www.cbre.com)

PROUDLY MANAGED BY:





# 3445 114 Avenue SE | Douglasdale Executive Centre East

## AVAILABILITY

YEAR BUILT	2008
SPACE AVAILABLE	205: 8,171 SF
DATE AVAILABLE	205: August 1, 2025
BASE RENT	Market
OPERATING COSTS	\$13.57 (2025)
PARKING RATIO	3 stall per 1000 SF at no charge
COMMENTS	Pylon signage available. Suite 205 is furnished and has building signage available.

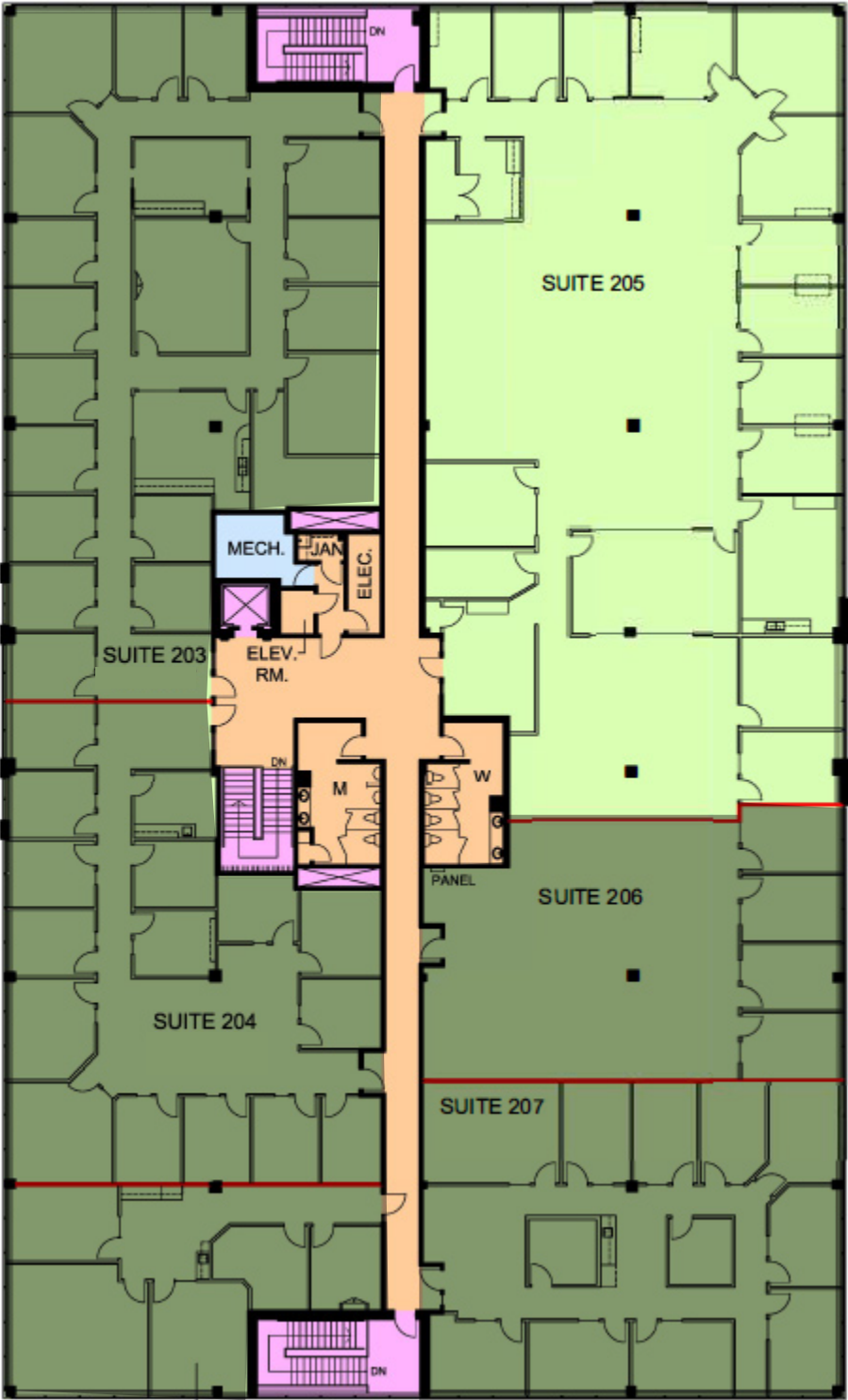


# 3445 114 Avenue SE

## AVAILABILITY

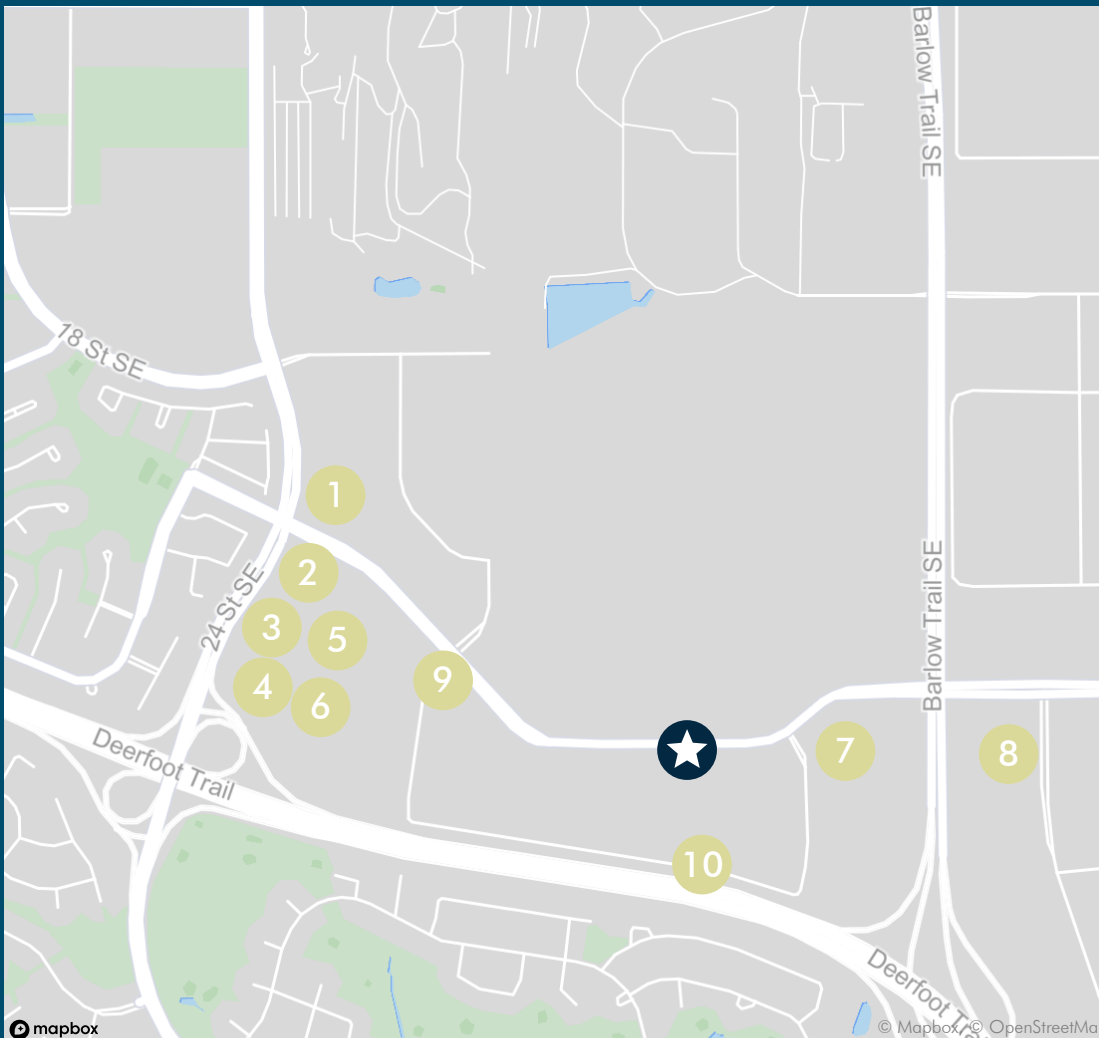
### Suite 205

8,171 SF



Suite 205

EAST



### The Property

★ Douglasdale  
Executive Centre

### Nearby Amenities

- 1 Tim Hortons
- 2 Ricky's All Day Grill
- 3 Dairy Queen Grill & Chill
- 4 McDonald's
- 5 Starbucks

- 6 Subway
- 7 Mohave Grill
- 8 Denny's
- 9 Anytime Fitness
- 10 Big Sky Fitness

**Stuart Watson**  
Senior Vice President  
403 750 0540  
stuart.watson@cbre.com

**Katie Sapieha**  
Senior Vice President  
403 750 0529  
katie.sapieha@cbre.com

**CBRE Limited, Real Estate Brokerage**  
525 8 Ave SW, Suite 3200  
Calgary, Alberta, T2P 1G1  
+1 403 263-444 • www.cbre.com



This disclaimer shall apply to CBRE Limited, Real Estate Brokerage, and to all other divisions of the Corporation; to include all employees and independent contractors ("CBRE"). The information set out herein, including, without limitation, any projections, images, opinions, assumptions and estimates obtained from third parties (the "Information") has not been verified by CBRE, and CBRE does not represent, warrant or guarantee the accuracy, correctness and completeness of the Information. CBRE does not accept or assume any responsibility or liability, direct or consequential, for the Information or the recipient's reliance upon the Information. The recipient of the Information should take such steps as the recipient may deem necessary to verify the Information prior to placing any reliance upon the Information. The Information may change and any property described in the Information may be withdrawn from the market at any time without notice or obligation to the recipient from CBRE. CBRE and the CBRE logo are the service marks of CBRE Limited and/or its affiliated or related companies in other countries. All other marks displayed on this document are the property of their respective owners. All Rights Reserved.