

For Lease

CBRE

Summerside Centre

Move in ready office space

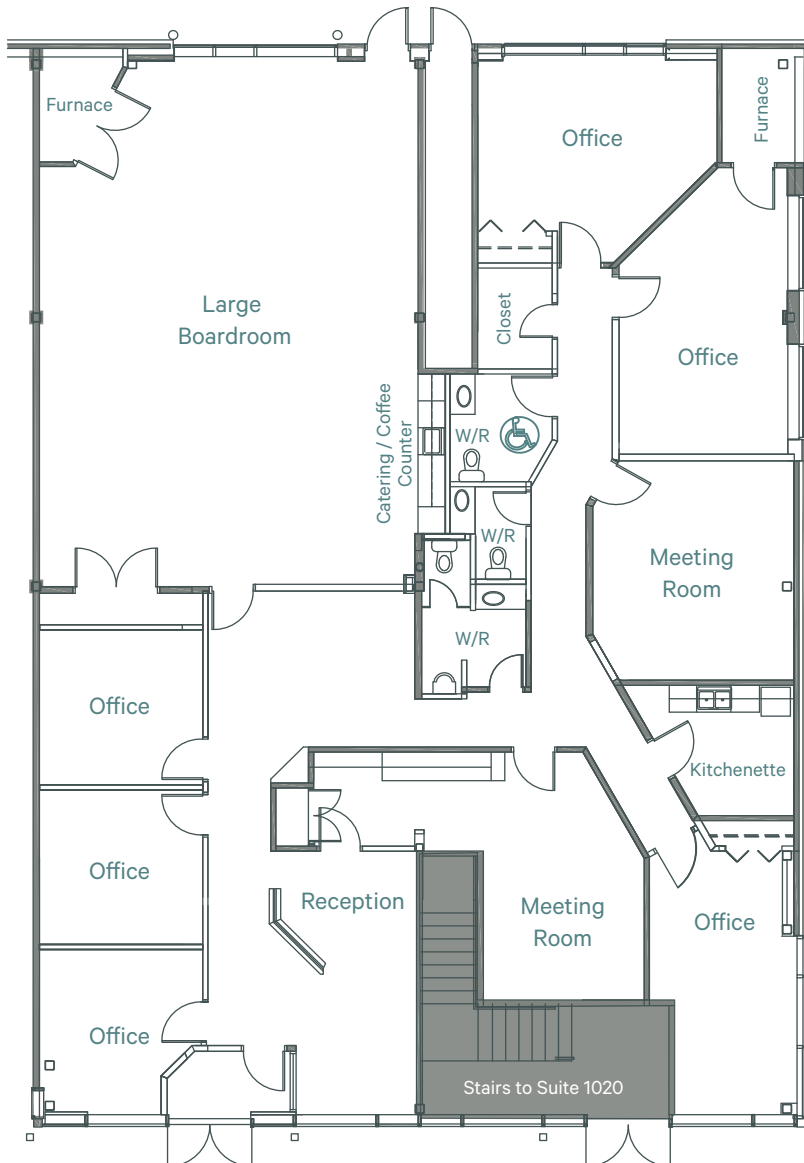
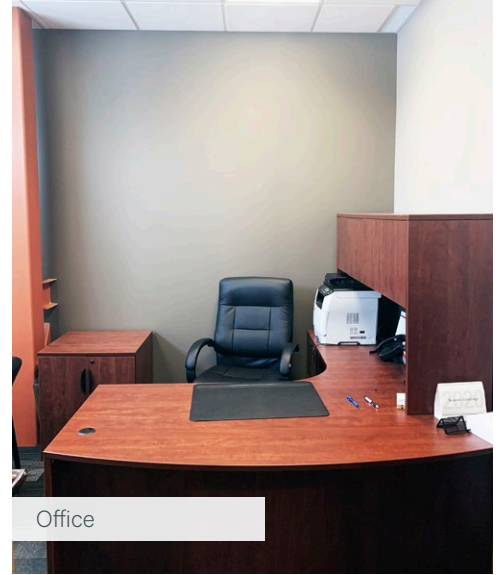
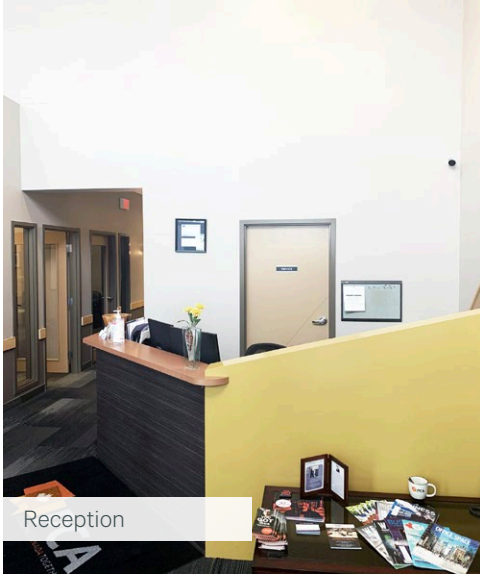
1020 & 1024 Parsons Road SW
Edmonton, AB

Main floor 4,330 sq. ft. & 2nd Floor 2,502 sq. ft. | Contiguous up to 6,832 sq. ft.



Summerside Centre

1020 & 1024 Parsons Road SW | Edmonton, AB



Lease Details

Suite 1024

4,330 sq. ft.

Main Floor

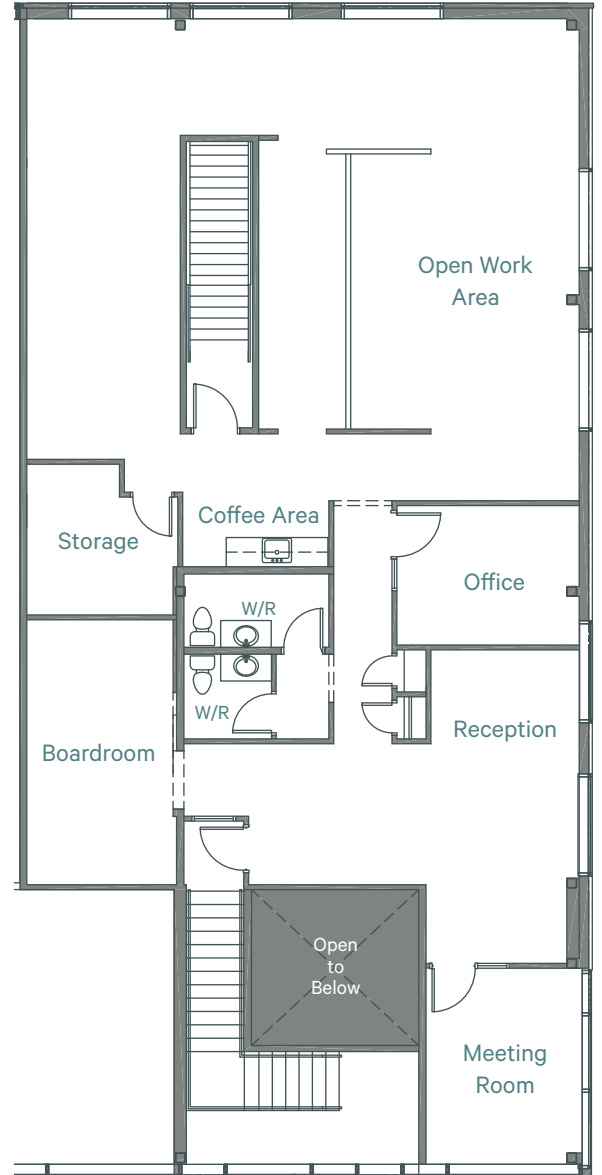
This move in ready suite features expansive, high ceilings in the reception area as well as the large boardroom, which includes a catering/ coffee counter. In addition, the space includes 6 offices, 2 meeting rooms, kitchenette, and private washrooms.

Suite 1020

2,502 sq. ft.

2nd Floor

With a private entryway on the main floor, a staircase leads up to Suite 1020 on the second floor. The space includes a reception and waiting area, 3 offices, boardroom, meeting room, open work area, storage room, coffee area, and private washrooms.



Availabilities

Suite 1024 - 4,330 sq. ft.
Suite 1020 - 2,502 sq. ft.
Contiguous up to 6,832 sq. ft.



Additional Rent

\$ 7.82 / sq. ft.
+ utilities (2023)



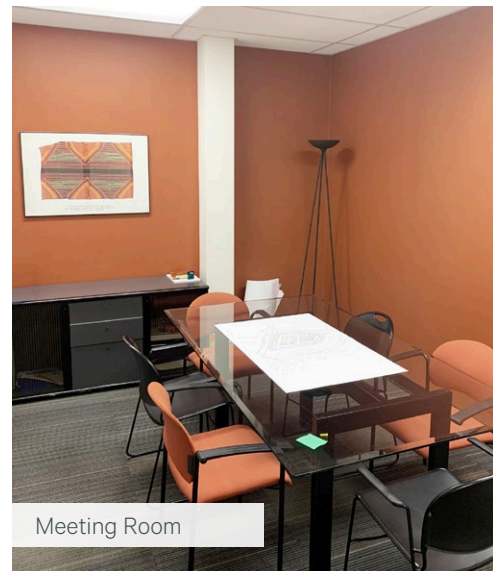
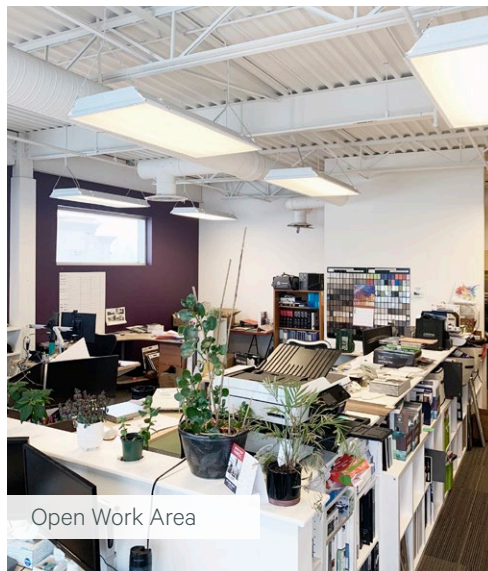
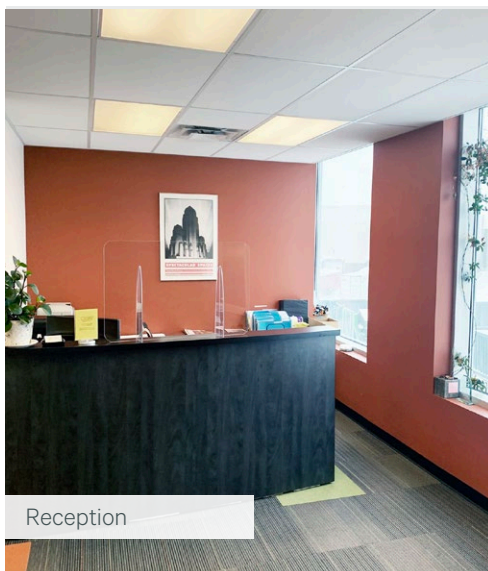
Net Rent

\$ 18.00 / sq. ft.



Parking

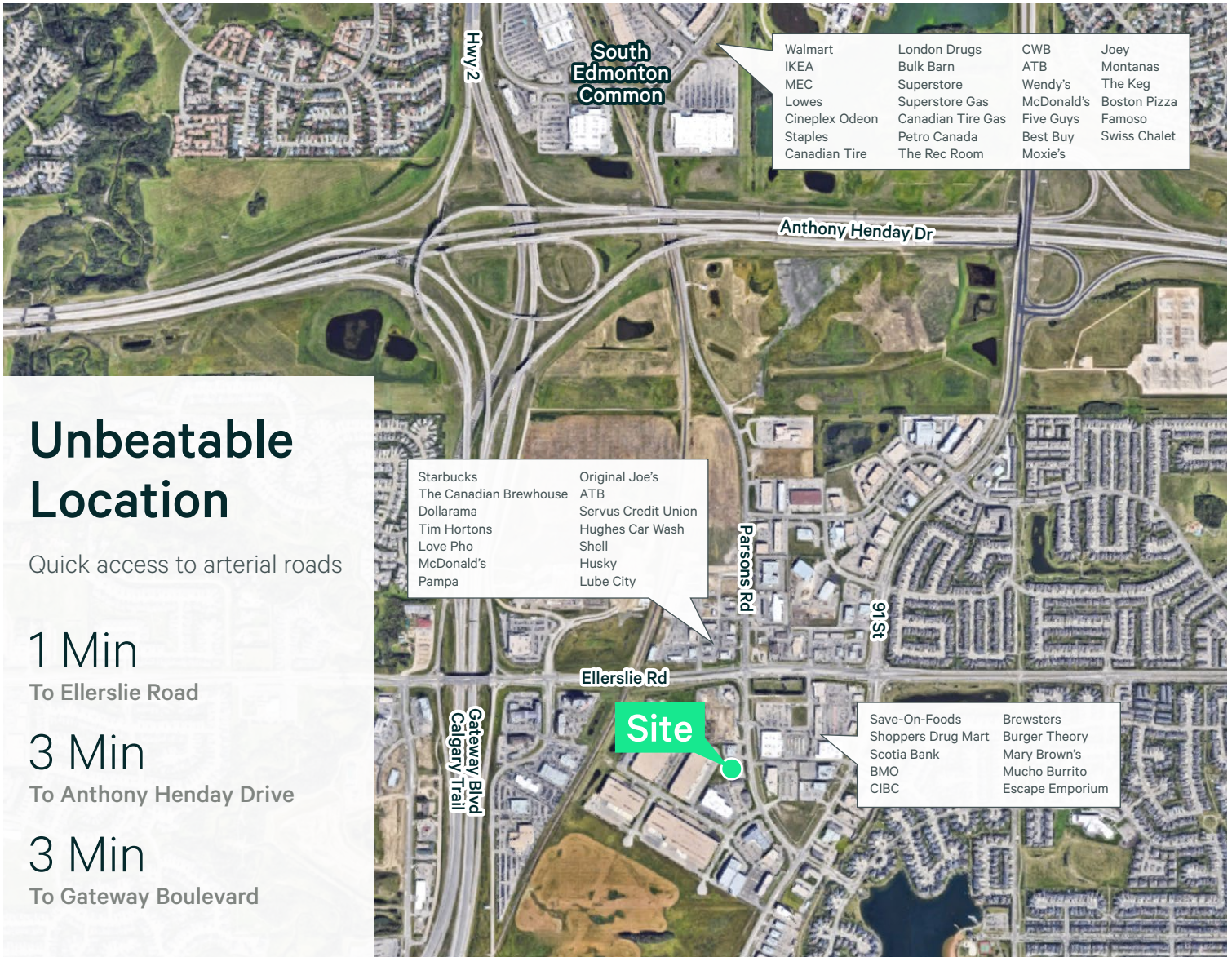
3.2 stalls / 1,000 sq. ft.



Summerside Centre

1020 & 1024 Parsons Road SW | Edmonton, AB

For Lease



Unbeatable Location

Quick access to arterial roads

1 Min

To Ellerslie Road

3 Min

To Anthony Henday Drive

3 Min

To Gateway Boulevard

Contact Us

Ryan O'Shaughnessy

Senior Associate

+1 780 229 4686

ryan.oshaughnessy@cbre.com

Mark Anderson

Vice President

+1 780 229 4652

mark.anderson2@cbre.com

This disclaimer shall apply to CBRE Limited, and to all divisions of the Corporation ("CBRE"). The information set out herein (the "Information") has not been verified by CBRE, and CBRE does not represent, warrant or guarantee the accuracy, correctness and completeness of the Information. CBRE does not accept or assume any responsibility or liability, direct or consequential, for the Information or the recipient's reliance upon the Information. The recipient of the Information should take such steps as the recipient may deem necessary to verify the Information prior to placing any reliance upon the Information. The Information may change and any property described in the Information may be withdrawn from the market at any time without notice or obligation to the recipient from CBRE.