

OFFICE FOR LEASE

Beaver House

10158 103 Street
Edmonton, AB



Cory Wosnack
Principal & Managing Director
+1 780 909 7850
cory.wosnack@avisonyoung.com

Hillary Williams
Senior Associate
+1 780 993 3125
hillary.williams@avisonyoung.com

**AVISON
YOUNG**

Heritage building with exposed brick & beam details complimented by modern improvements

Up to +/-15,000 sf | 5th floor, full floor opportunity

Ideally located on 103 Street within walking distance to some of Edmonton's best restaurants, ICE District, and the pedway system providing easy indoor access to the Financial core. Tenant building amenities include bike storage and a modern and comfortable tenant lounge/games room with large kitchen.



[CLICK TO VIEW VIRTUAL TOURS](#)

Area Available

Suite 200 - 3,396 sf (Sept 1, 2025)
Suite 220 - 2,939 sf
Suite 300 - 14,275 sf (Sept 1, 2025)
Suite 401 - 4,160 sf
Suite 404 - 2,766 sf
Suite 406 - 1,754 sf
Suite 501 - 6,714 sf
Suite 503 - 6,812 sf
5th Floor: Full floor opportunity up to +/- 15,000 sf

Lease Rate

Starting at \$14.00 psf

Operating Costs

\$13.60 psf

Inducements

Full turnkey options available

Parking

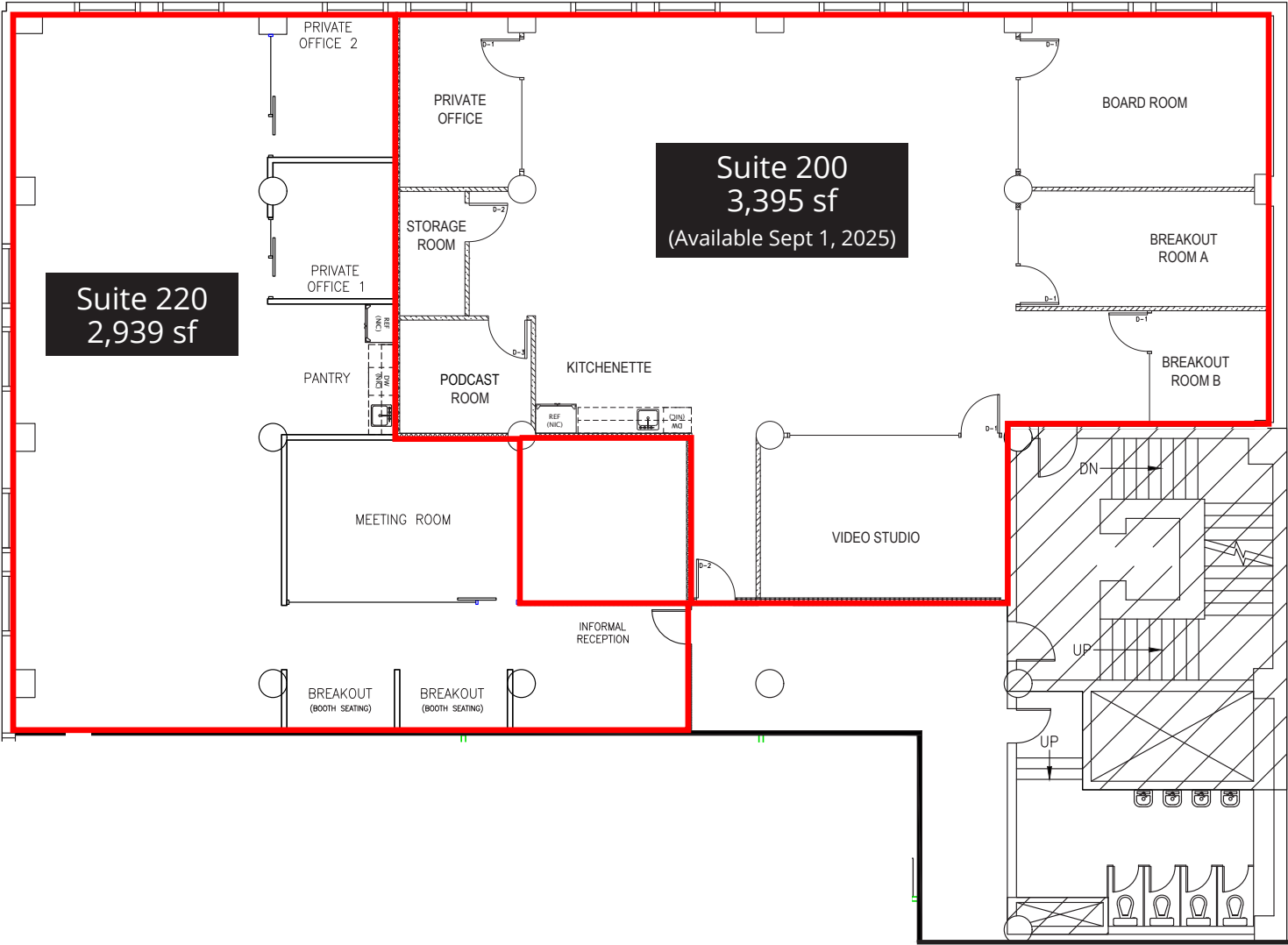
Stalls available in the adjacent lot

Term

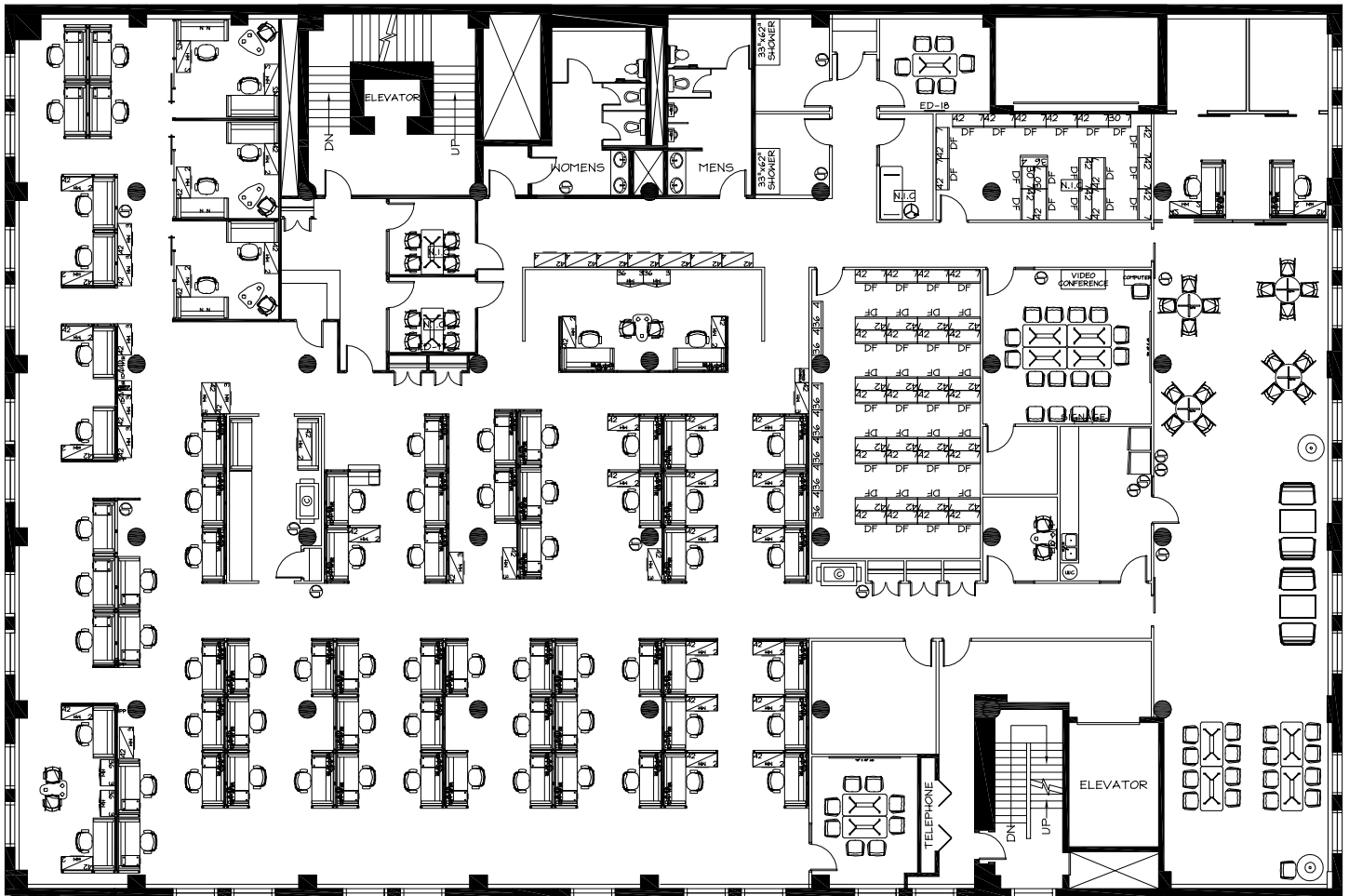
Flexible terms available starting at 1 year



2nd Floor



3rd Floor: 14,275 sf

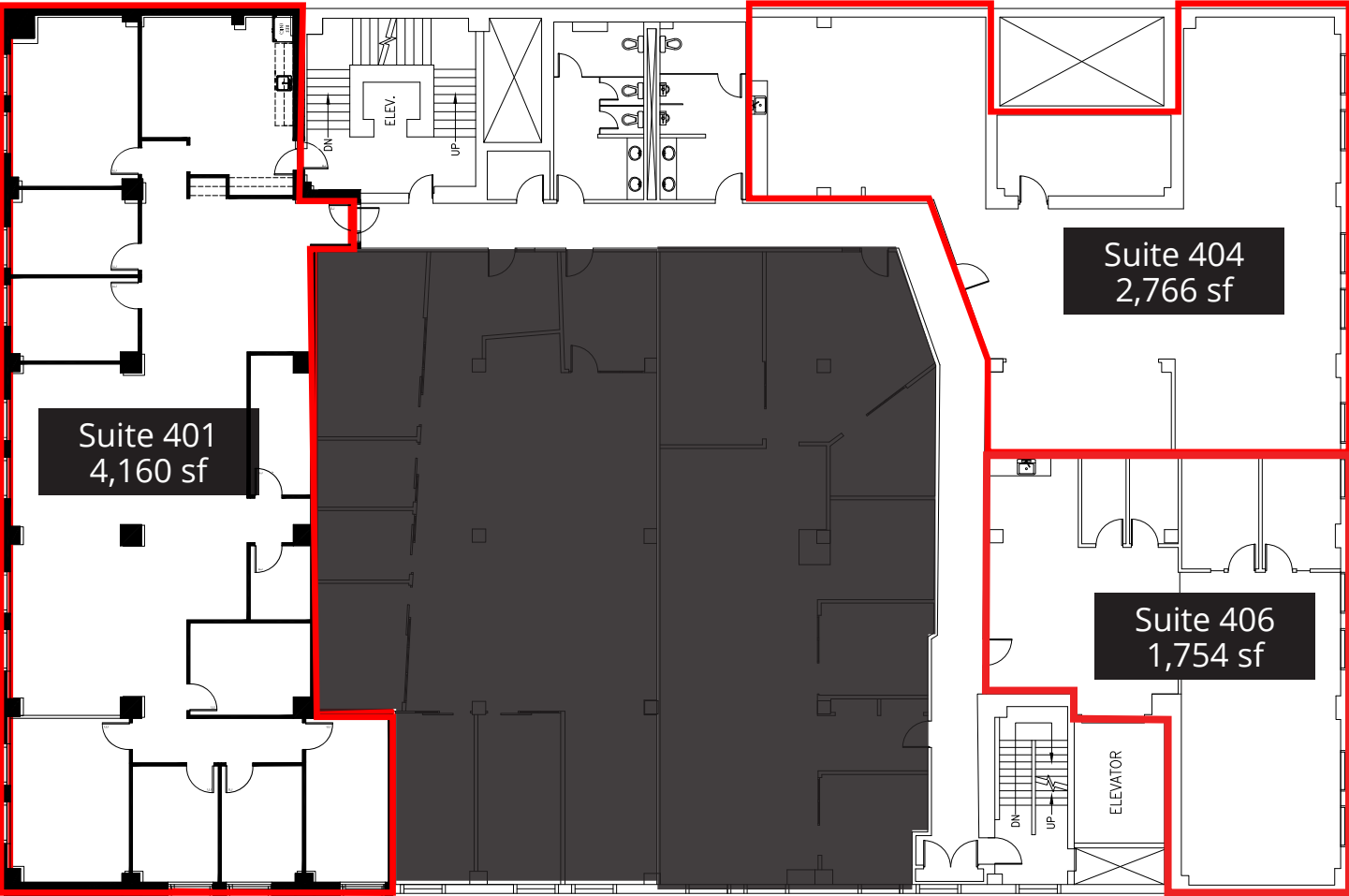


Available September 1, 2025

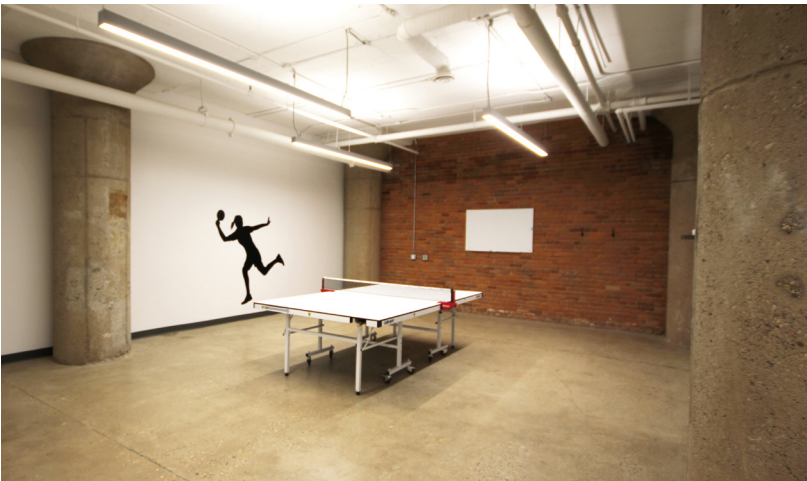
Demising options available



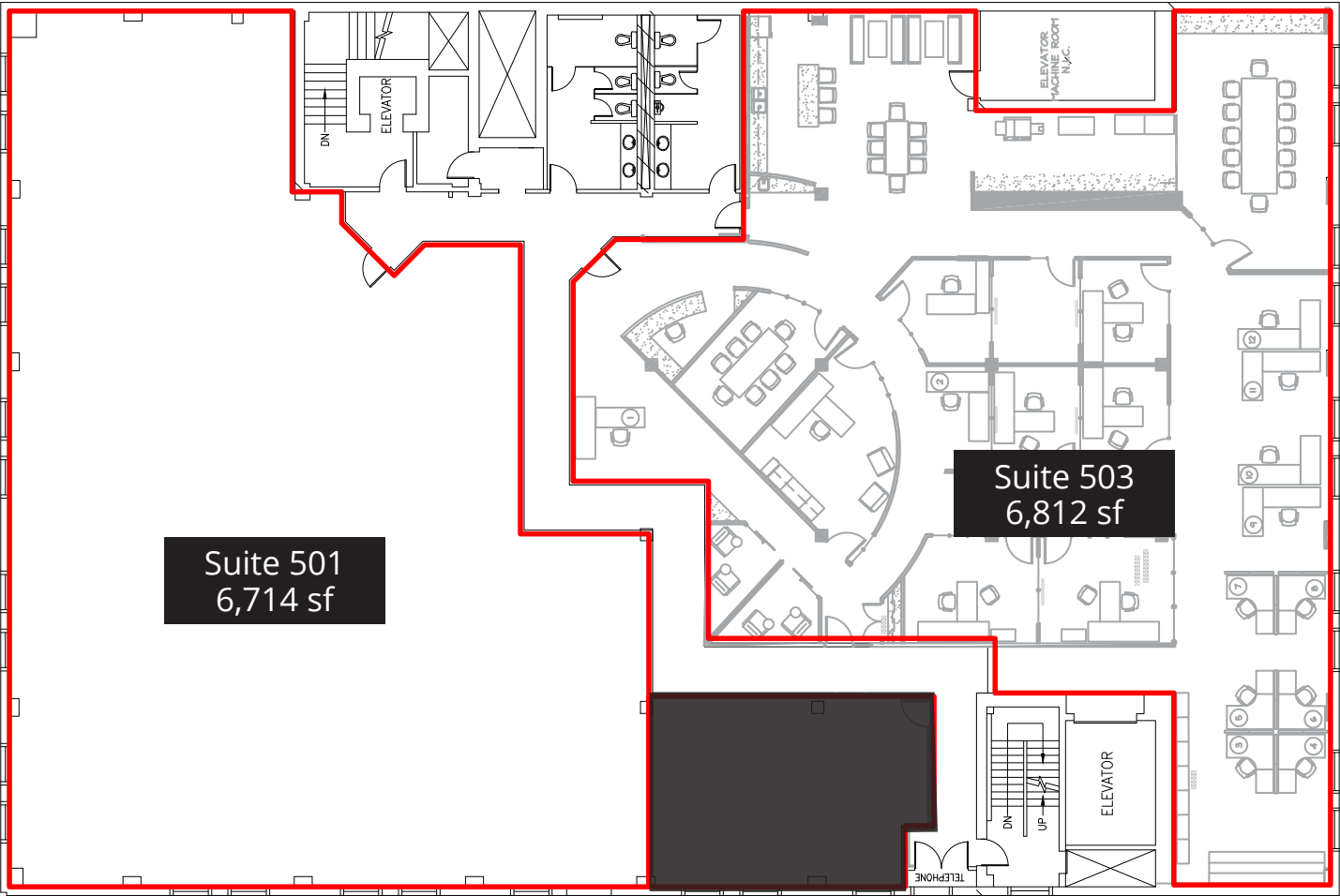
4th Floor



Building Tenant Lounge



5th Floor



Suite 501





The Downtown Vibe

The heart of the Capital City. The hub for all things art and culture. Where the options for diverse cuisine, shopping and entertainment are limitless. Your employees and clients will benefit from all that this downtown location has to offer.

Walkable Amenities

- Bottega 104
- Cavern
- YEG Pizza
- XO Bistro + Bar
- Remedy Cafe
- Sabor
- Tzin Wine & Tapas
- Jack's Burger Shack
- Rogers Place

Public Transit

In addition to its location directly along major bus routes, Beaver House is steps away with access to four LRT stations via pedway connection.

Located on 103 Street the Downtown Bike Network offers over 7.8 km of protected bike lanes, shared roadways, and paths.

For more information, please contact

Cory Wosnack

Principal & Managing Director

+1 780 909 7850

cory.wosnack@avisonyoung.com

Hillary Williams

Senior Associate

+1 780 993 3125

hillary.williams@avisonyoung.com



Visit us online
avisonyoung.com

©2025 Avison Young Commercial Real Estate Services, LP All rights reserved.

E. & O.E.: The information contained herein was obtained from sources which we deem reliable and, while thought to be correct, is not guaranteed by Avison Young.

Suite 2100, 10111 - 104 Avenue | Edmonton, AB T5J 0J4 |
780 428 7850

**AVISON
YOUNG**