



Lease Available

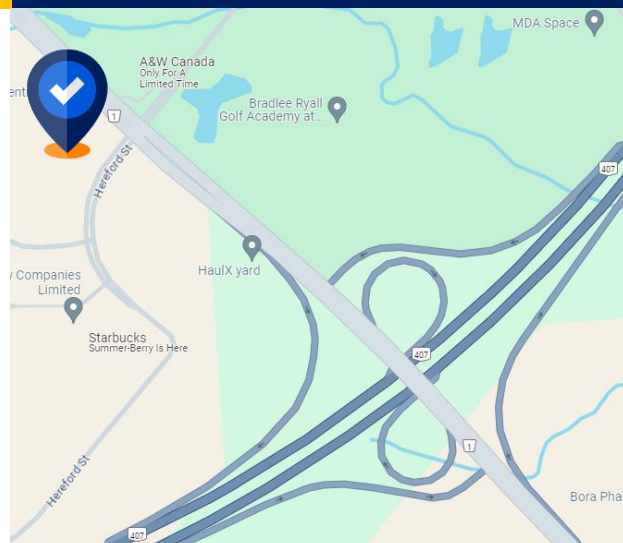
Space Profile

Premises	Suite 300
Total Rentable Area	27,306 SF
Gross Rent	Contact Agent
Availability	3 Months
Term	5 Years

Features

- Plug and play space
- Abundant natural light throughout
- Available immediately
- Large kitchen area
- Great mix of open plan space (individual and team)
- High-quality furniture is negotiable
- 3/1000 Parking
- 407 access nearby
- LEED Silver CI (Commercial Interiors Certified)

99 Hereford Street Brampton, ON



VIEW THE VIRTUAL TOUR 360°



Andrew Chapman
Principal,
Sales Representative
416.862.0659
achapman@cresa.com

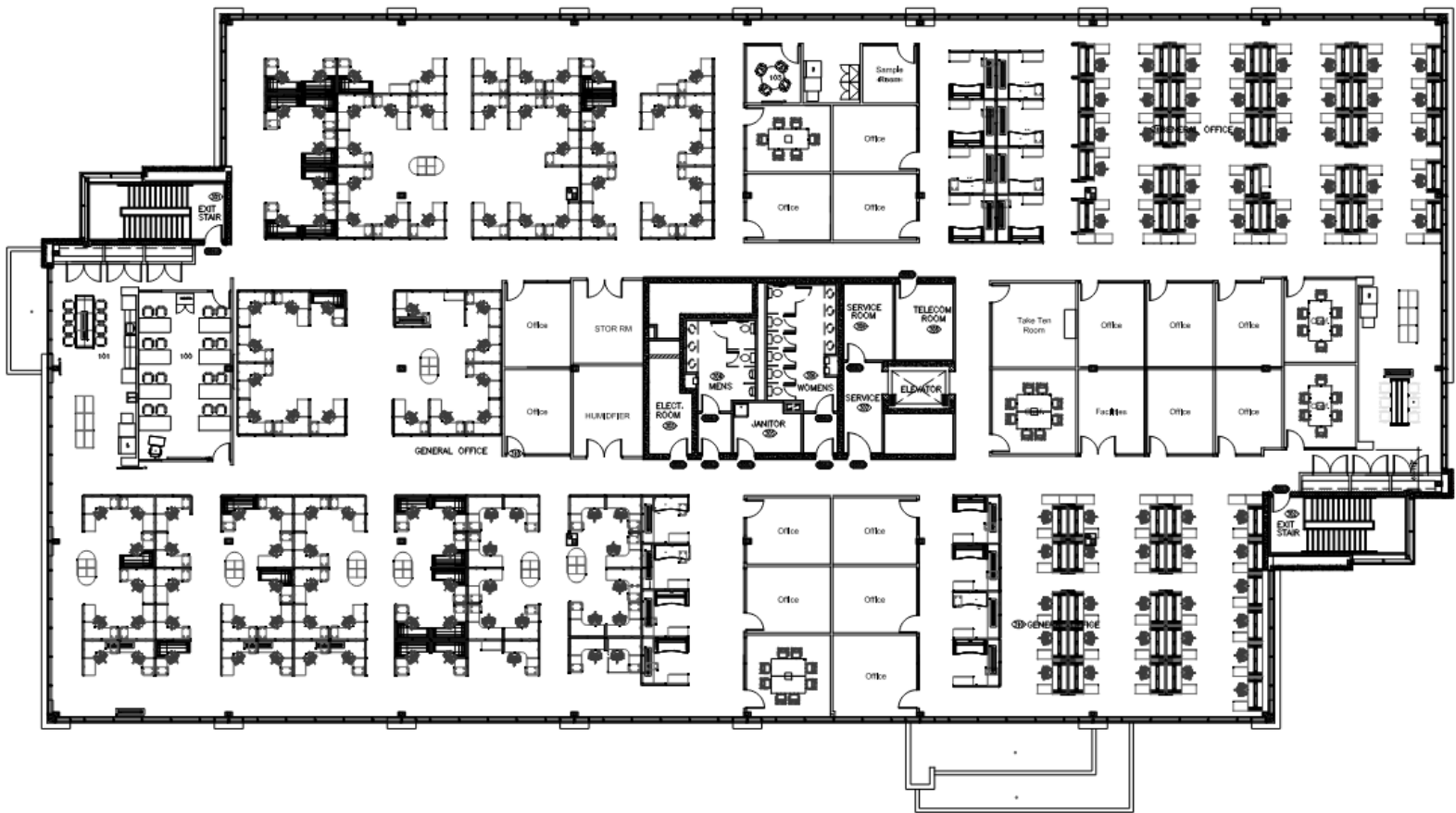


John Macintyre
Principal,
Broker
416.540.6040
jmacintyre@cresa.com

Even though obtained from sources deemed reliable, no warranty or representation, express or implied, is made as to the accuracy of the information herein, and it is subject to errors, omissions, change of price, rental or other conditions, withdrawal without notice, and to any special listing conditions imposed by our principals.

99 Hereford Street – Brampton, ON

VIEW THE
VIRTUAL TOUR **360°**

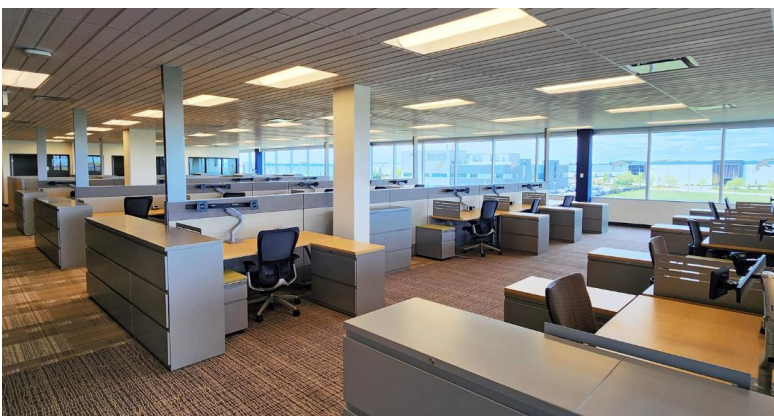


Andrew Chapman
Principal,
Sales Representative
416.862.0659
achapman@cresa.com



John Macintyre
Principal,
Broker
416.540.6040
jmacintyre@cresa.com

99 Hereford Street – Brampton, ON



Andrew Chapman
Principal,
Sales Representative
416.862.0659
achapman@cresa.com



John Macintyre
Principal,
Broker
416.540.6040
jmacintyre@cresa.com