

NEW TENANT GYM



# PALLISER SOUTH

140 – 10<sup>TH</sup> AVENUE | CALGARY, AB



# PROPERTY INFORMATION

2018 TOBY Award Winner | LEED Gold Certified | Dog Friendly

## OPERATING COSTS

\$19.94 per square foot (2025)

## PARKING RATIO

One stall per 1,500 square feet

## TELECOM PROVIDERS

Telus, Bell, Shaw, Allstream, MTS

## PARKING RATE

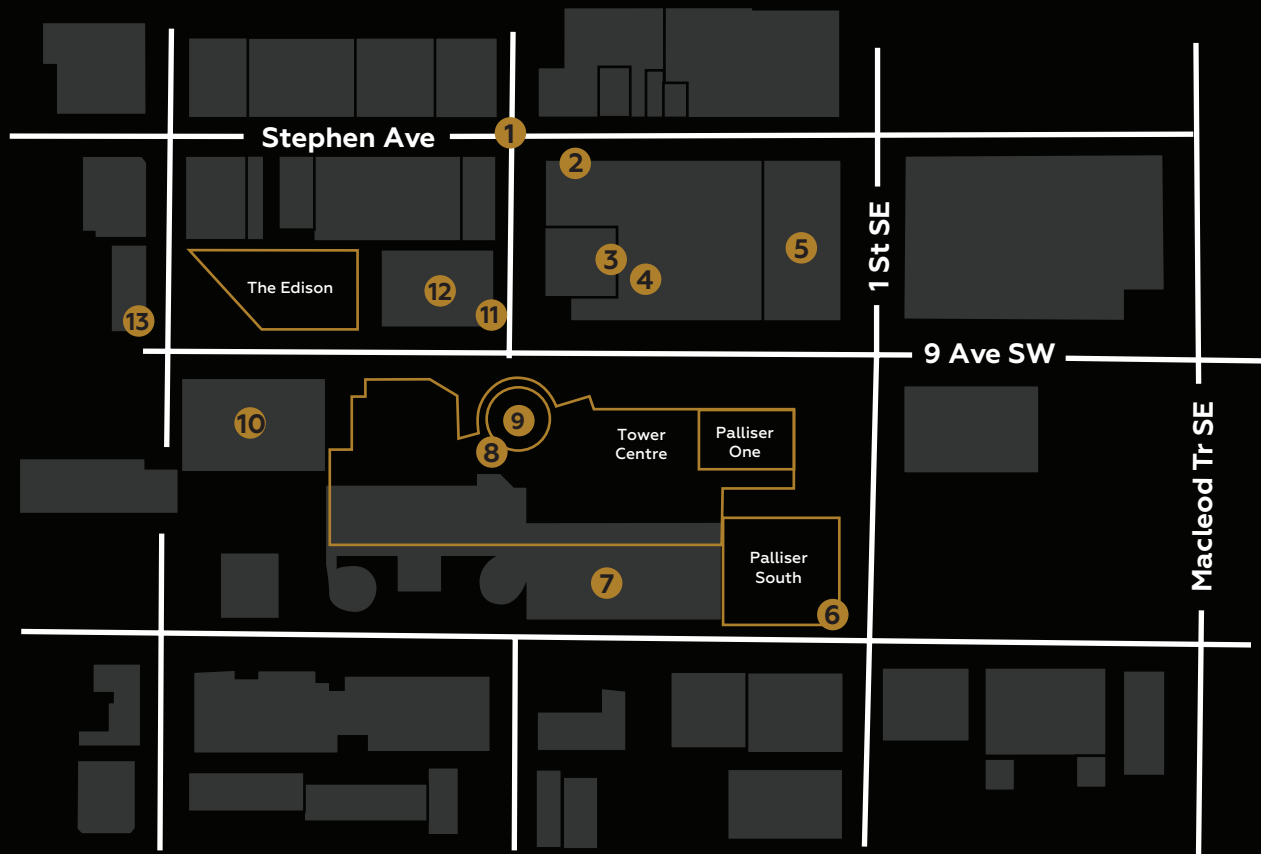
\$385.00 per month (unreserved)

\$250.00 per month (unreserved rooftop)

6' 4" clearance

## SURROUNDING AMENITIES

- |                     |                           |
|---------------------|---------------------------|
| ① Stephen Avenue    | ⑧ Ruth Chris Steakhouse   |
| ② Milestones        | ⑨ Sky 360 Restaurant      |
| ③ Starbucks         | ⑩ Fairmont Palliser Hotel |
| ④ Marriott Downtown | ⑪ Charcut Steakhouse      |
| ⑤ Glenbow Museum    | ⑫ Le Germain Hotel        |
| ⑥ Waves Coffee      | ⑬ Meat & Bread            |
| ⑦ Palliser Parkade  |                           |



# BUILDING AMENITIES

All amenities are exclusively for tenant use and carry no additional cost.



## PALLISER FITNESS CENTRE NOW OPEN

Located in the lobby, the fitness facility includes: changing rooms; towel service; and club quality cardio & weight machines. A professional trainer is on site during business hours to offer classes at an additional charge.



## CONFERENCE FACILITY NOW OPEN

Located on the second floor equipped with the latest audio-visual technology.



## GOLF SIMULATOR NOW OPEN

Located within the tenant lounge and bookable for private functions, the golf lounge includes a state of the art golf simulator to help improve your swing.



## BICYCLE STORAGE & BICYCLE SHARE PROGRAM

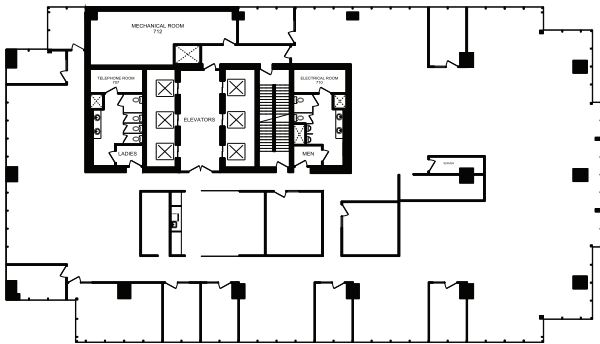
Secure bicycle storage is available to all tenants. A bicycle sharing program is also available after downloading the Bloom App. Bikes may be used within city limits.



# AVAILABLE SUITES

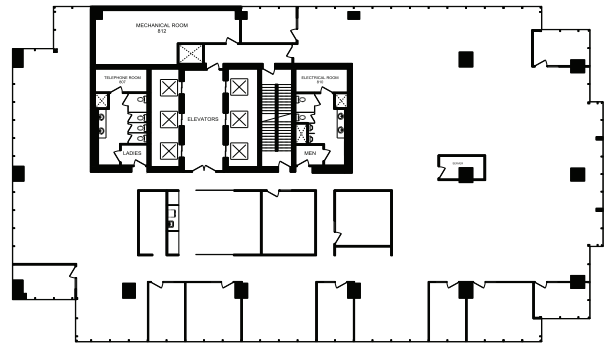
**#700** | 13,374 sf

Demise Options Available



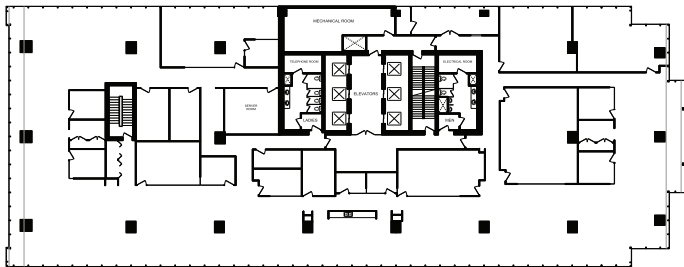
**#800** | 13,432 sf

Demise Options Available



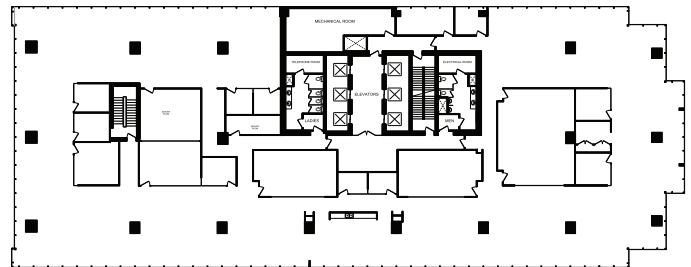
**#1200** | 20,692 sf

Available Immediately



**#1400** | 20,867 sf

Available Immediately





This premier offering of the Aspen Club is exclusively for the tenants of any Aspen Properties owned building in Calgary or Edmonton.

Over 100,000 square feet of amenities spread across eight centrally located buildings will elevate the experience and value of your daily life.

For more information and to join the Aspen Club, visit:

**[aspenproperties.ca/club](https://aspenproperties.ca/club)**

**ANDREW DOMMETT**

Senior Leasing Manager

403.470.2847

[adommett@aspenproperties.ca](mailto:adommett@aspenproperties.ca)

