



**CUSHMAN &  
WAKEFIELD**

**900, 904, 908, 910  
916, 930, 932 & 940**

**THE EAST MALL  
ETOBICOKE, ON**

---

**MULTIPLE OFFICE  
SPACE OPTIONS  
AVAILABLE**

---

**Brandon Garrett\***

Vice President  
905 501 6440  
brandon.garrett@cushwake.com

**Marc Danko\***

Senior Vice President  
905 501 6467  
marc.danko@cushwake.com

**FOR LEASE**

---

**Cushman & Wakefield ULC, Brokerage**  
1 Prologis Boulevard, Suite 300  
Mississauga, ON L5W 0G2  
905 568 9500

# THE EAST MALL

## Etobicoke

# THE EAST MALL

## Etobicoke

### DETAILS

|                        |  |
|------------------------|--|
| <b>Location</b>        | Highway 427 and Burnhamthorpe Road     |
| <b>Occupancy</b>       | Immediate                              |
| <b>Term</b>            | Up to 5 years                          |
| <b>Gross Rent</b>      | \$15.00 PSF / PA (includes utilities)  |
| <b>Additional Rent</b> | Includes TMI and Utilities - HST extra |

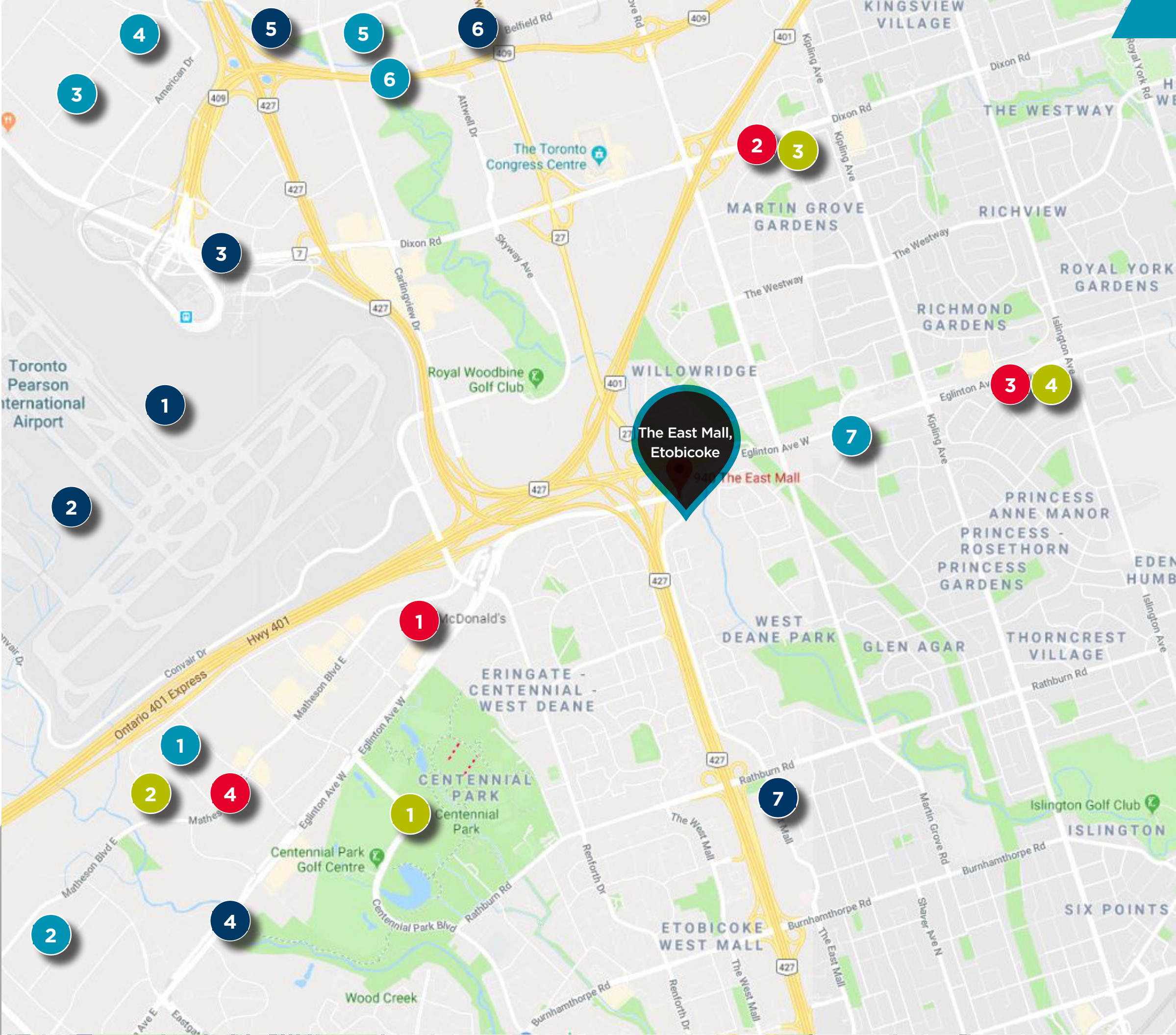
| Building       | Suite          | Availability (square feet) |        |
|----------------|----------------|----------------------------|--------|
| <del>900</del> | <del>100</del> | <del>1,272</del>           | LEASED |
| 900            | 102            | 1,233                      |        |
| 900            | 103            | 759                        |        |
| 900            | 200            | 3,188                      |        |
| 900            | 300            | 3,312                      |        |
| <del>904</del> | <del>100</del> | <del>846</del>             | LEASED |
| <del>904</del> | <del>300</del> | <del>1,817</del>           | LEASED |
| 908            | 100            | 1,782                      |        |
| 908            | 200            | 1,863                      |        |
| 908            | 300            | 1,841                      |        |
| 910            | 101            | 506                        |        |
| 910            | 102            | 585                        |        |
| <del>910</del> | <del>103</del> | <del>637</del>             | LEASED |
| 910            | 204            | 1,790                      |        |
| 910            | 305            | 1,766                      |        |
| <del>916</del> | <del>101</del> | <del>1,821</del>           | LEASED |
| 916            | 202            | 1,868                      |        |
| 916            | 303            | 1,838                      |        |
| 930            | 200            | 1,883                      |        |
| 932            | 100            | 2,000                      |        |
| <del>932</del> | <del>300</del> | <del>1,797</del>           | LEASED |
| 940            | 201            | 2,689                      |        |

### HIGHLIGHTS

- 3 TTC bus stops steps away including a direct bus to Kipling Station
- Large parking lot with an abundance of spaces for employees and company guests
- Close proximity to Highway 427, 27 & 401
- Only 7 minutes to Pearson Airport and 20 minutes to downtown Toronto
- Tons of free on-site parking



# AMENITIES



## ✕ Food & Restaurants

- 1. McDonald's
- 2. Little Caesar's
- 3. The Keg Steakhouse
- 4. Moxie's Grill & Bar
- 5. Jack Astor's Bar & Grill
- 6. WingsUp!
- 7. Tim Hortons

## 🏠 Convenience & Entertainment

- 1. Hertz
- 2. Toronto Pearson Airport
- 3. Best Western
- 4. Centennial Park
- 5. Sheraton Toronto Airport Hotel
- 6. Diamond Beach
- 7. Goodlife Fitness

## 🛒 Retail

- 1. LCBO
- 2. Shoppers Drug Mart
- 3. Metro
- 4. Jacob

## 💰 Banks

- 1. BMO
- 2. CIBC
- 3. TD Canada Trust
- 4. RBC

900

Suite 100  
1,272 SF

900

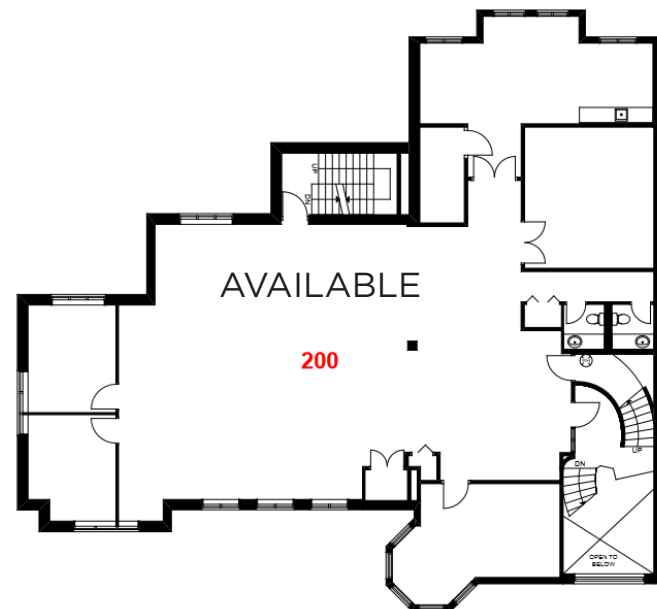
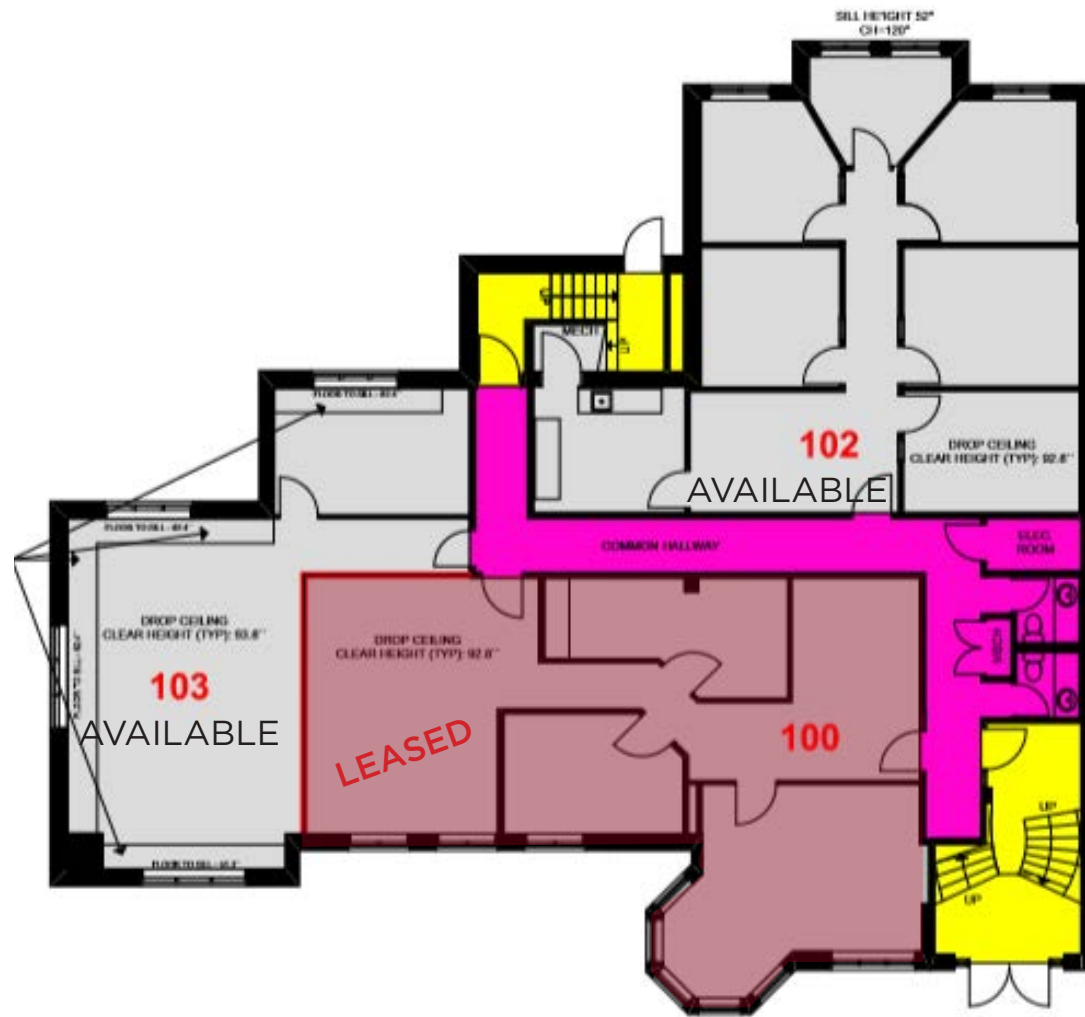
Suite 102  
1,233 SF

900

Suite 103  
759 SF

900

Suite 200  
3,188 SF



908

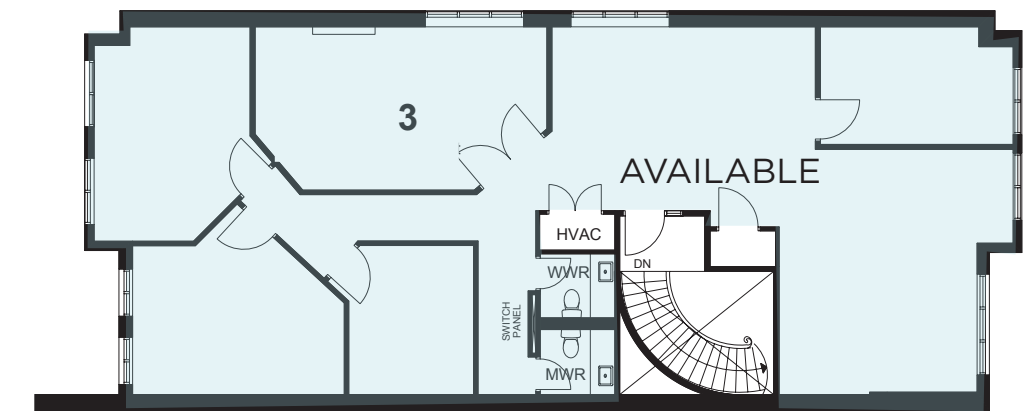
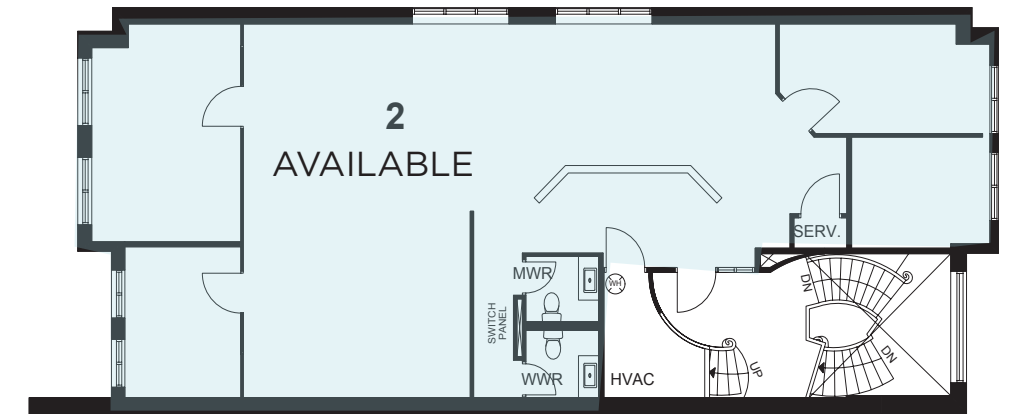
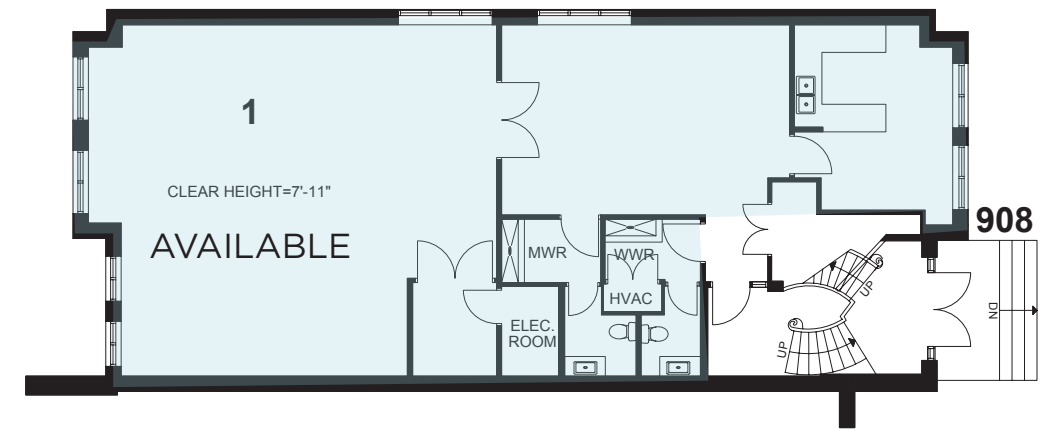
1st Floor  
1,782 SF

908

2nd Floor  
1,863 SF

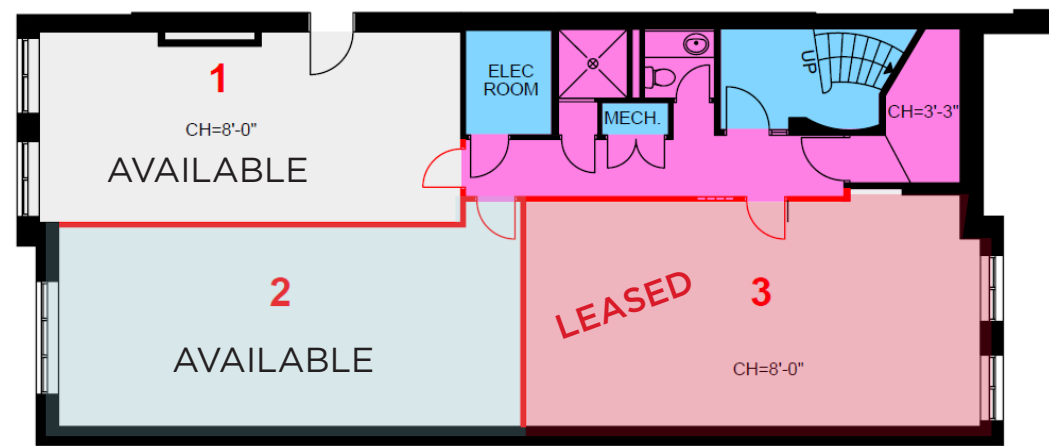
908

3rd Floor  
1,841 SF



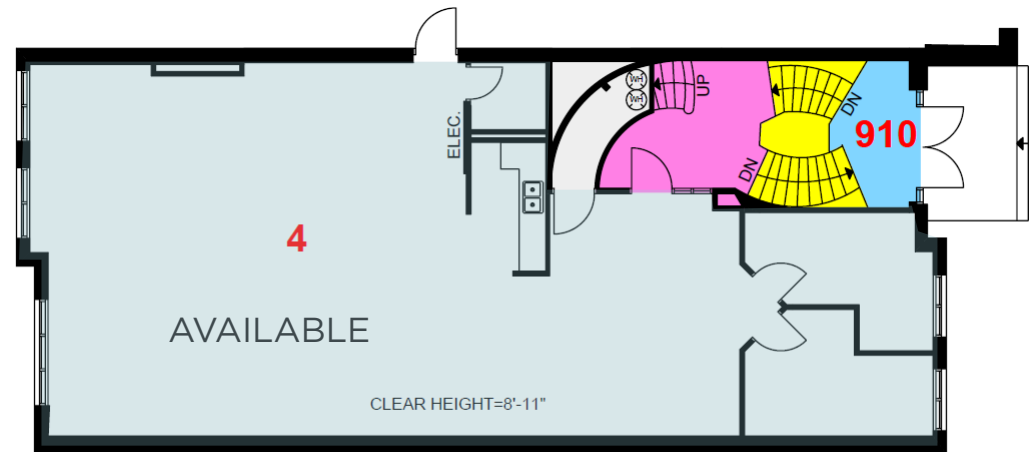
910

Suite 101  
506 SF



910

Suite 102  
585 SF

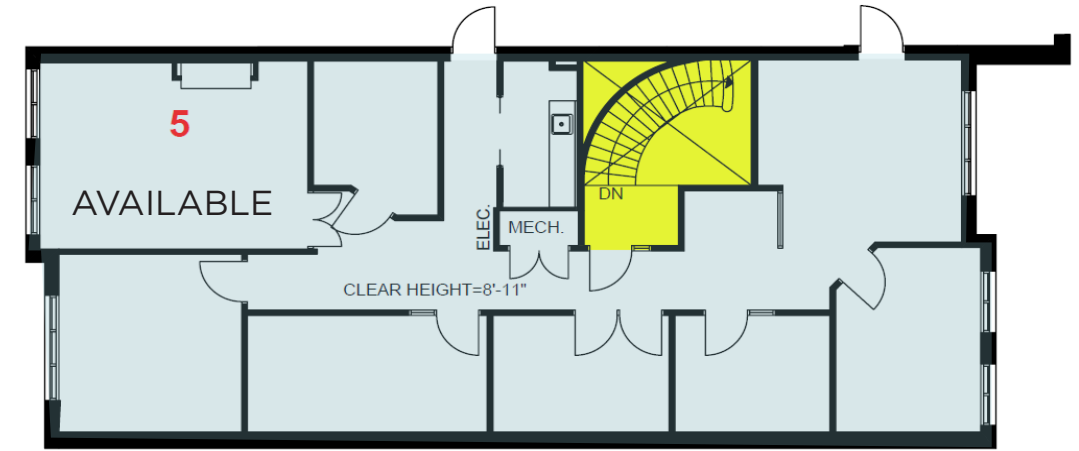


910

Suite 204  
1,790 SF

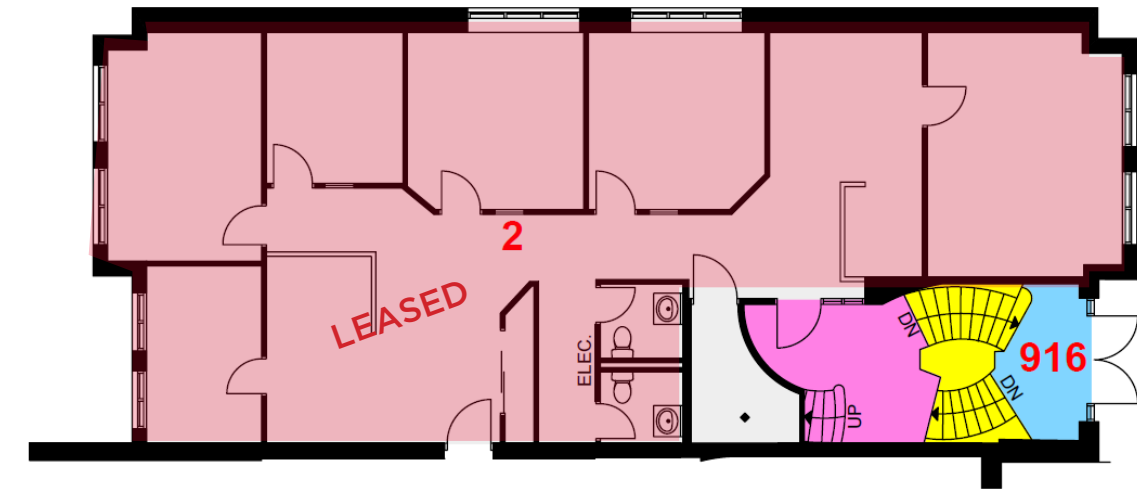
910

Suite 305  
1,766 SF



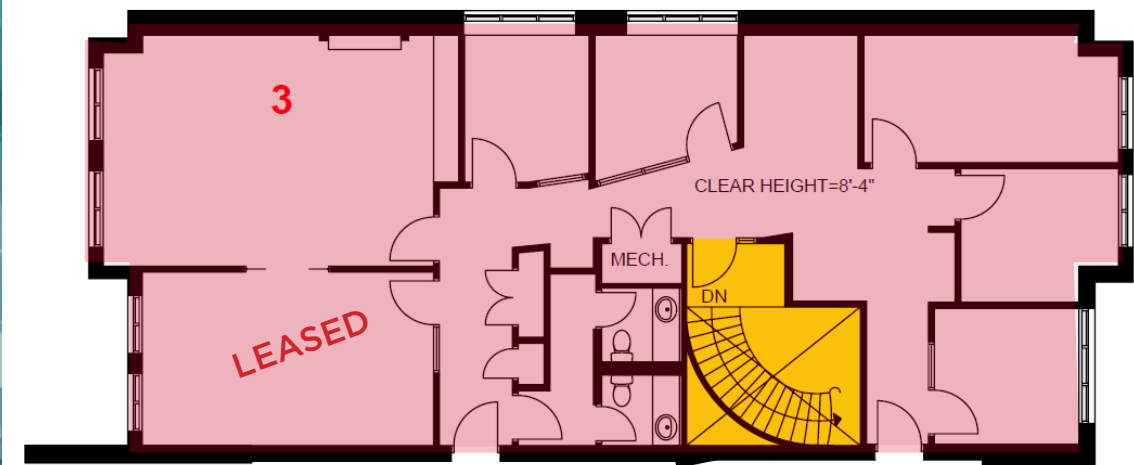
916

Suite 202  
1,868 SF



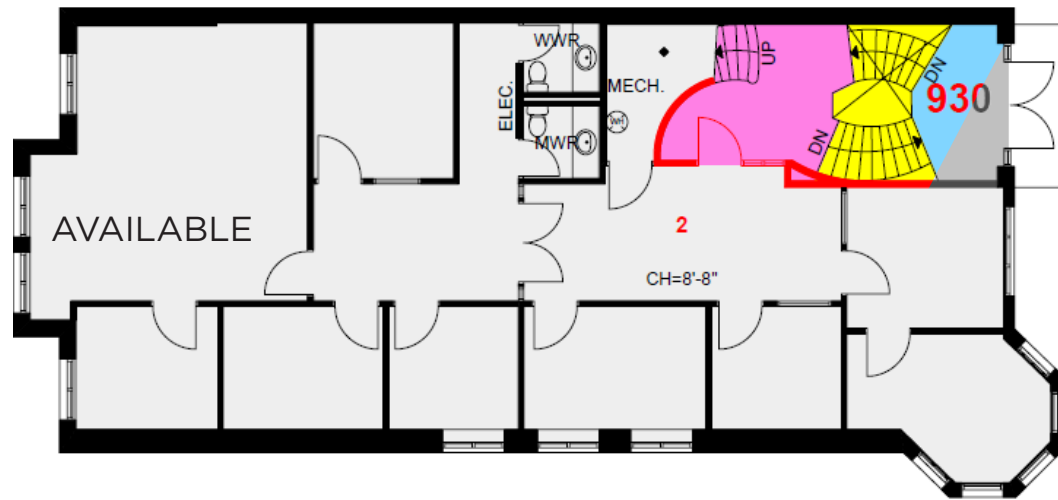
916

Suite 303  
1,838 SF



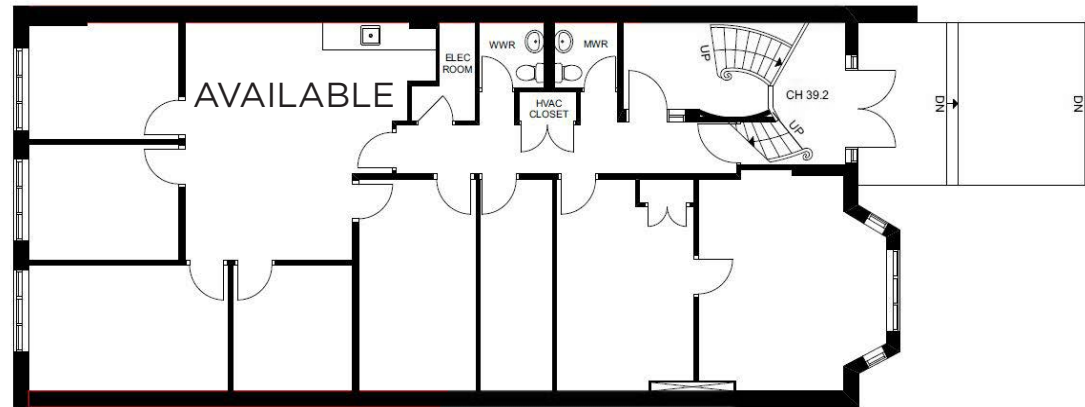
930

2nd Floor  
1,883 SF



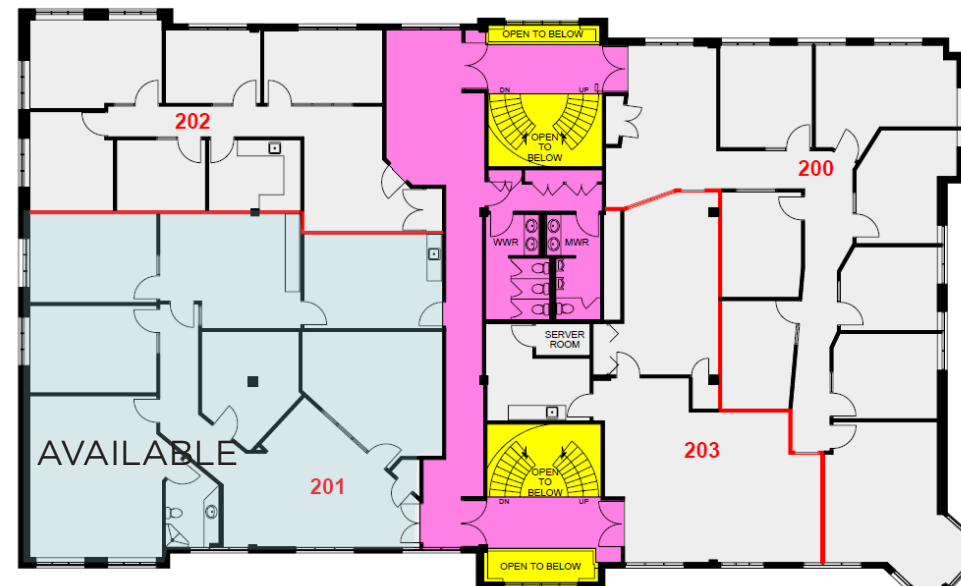
932

1st Floor  
1,772 SF



940

Suite 201  
2,689 SF



# CONTACT



**Cushman & Wakefield ULC, Brokerage**  
1 Prologis Boulevard, Suite 300  
Mississauga, ON L5W 0G2  
905 568 9500

**Brandon Garrett\***  
Vice President  
905 501 6440  
brandon.garrett@cushwake.com

**Marc Danko\***  
Senior Vice President  
905 501 6467  
marc.danko@cushwake.com

Cushman & Wakefield ULC, Brokerage \*Sales Representative  
No warranty or representation, expressed or implied, is made as to the accuracy of the information contained herein, and same is submitted subject to errors, omissions, change of price, rental or other conditions, withdrawal without notice, and to any specific listing condition, imposed by our principals.