

# 2700 Matheson Boulevard E., Mississauga

Airport Corporate Centre Class "A" Office Building

For Lease: Office



Jim O'Reilly, Partner\*  
905.247.9230  
[joreilly@lennard.com](mailto:joreilly@lennard.com)

Brian Lynett, Partner\*  
905.247.9222  
[blynett@lennard.com](mailto:blynett@lennard.com)

\*Sales Representative

*Click to  
View  
Virtual Tour*

**Lennard:** 602-350 Burnhamthorpe Road W, Mississauga  
905.625.5020 • [lennard.com](http://lennard.com)



# 2700 Matheson Boulevard East



Class "A", 8 storey 200,000 SF office building located in the Airport Corporate Centre, at the corner of Matheson Boulevard East and Explorer Drive.



Available Space

**801E: 6,035 SF\*** (built-out)

 [View Virtual Tour](#)

Possible Plug & Play existing furniture may be available

\*Elevator exposure



Net Rent

**\$17.00 PSF**

Additional Rent (2021 Est.)

**\$15.81 PSF**

Gross Rent

**\$32.81 PSF**

Tenant Improvement Allowance

**Negotiable**



Term Lease

**5 or 10 years**

Availability

**February 1, 2021**



Leasing Agents

**Jim O'Reilly\***

Partner

905.247.9230

joreilly@lennard.com

**Brian Lynett\***

Partner

905.247.9222

blynett@lennard.com

\*Sales Representative



# 2700 Matheson Boulevard East



## Property Highlights

- Two storey atrium lobby in the East/West towers connected by a central atrium
- BOMA BEST Certified level 2
- Amenities include a Sandwich Shop and Dry Cleaner in the building
- HVAC: Central system with compartmental air handling units on each floor
- Security: CCTV camera system and offsite alarm response. Proximity card system for after hours access
- Advanced fibre optics and copper backbone infrastructure
- Close proximity to all Airport Corporate Centre amenities and new rapid bus transit system

## Parking

- New parking deck level has been added
- Building ratio of 4 stalls per 1,000 SF leased
- Combination of free surface/deck parking and reserved underground parking
- 1 stall per 2,000 SF leased reserved underground parking at a cost of \$100.00 per stall per month

# 2700 Matheson Boulevard E.



Photos: 801E: 6,035 SF



**Lennard:**

Jim O'Reilly\*, Partner  
905.247. 9230 • joreilly@lennard.com

\*Sales Representative

Brian Lynett\*, Partner  
905.247. 9222 • blynett@lennard.com

[lennard.com](http://lennard.com)

# 2700 Matheson Boulevard E.



Photos: 801E: 6,035 SF



**Lennard:**

Jim O'Reilly\*, Partner  
905.247. 9230 • joreilly@lennard.com

\*Sales Representative

Brian Lynett\*, Partner  
905.247. 9222 • blynett@lennard.com

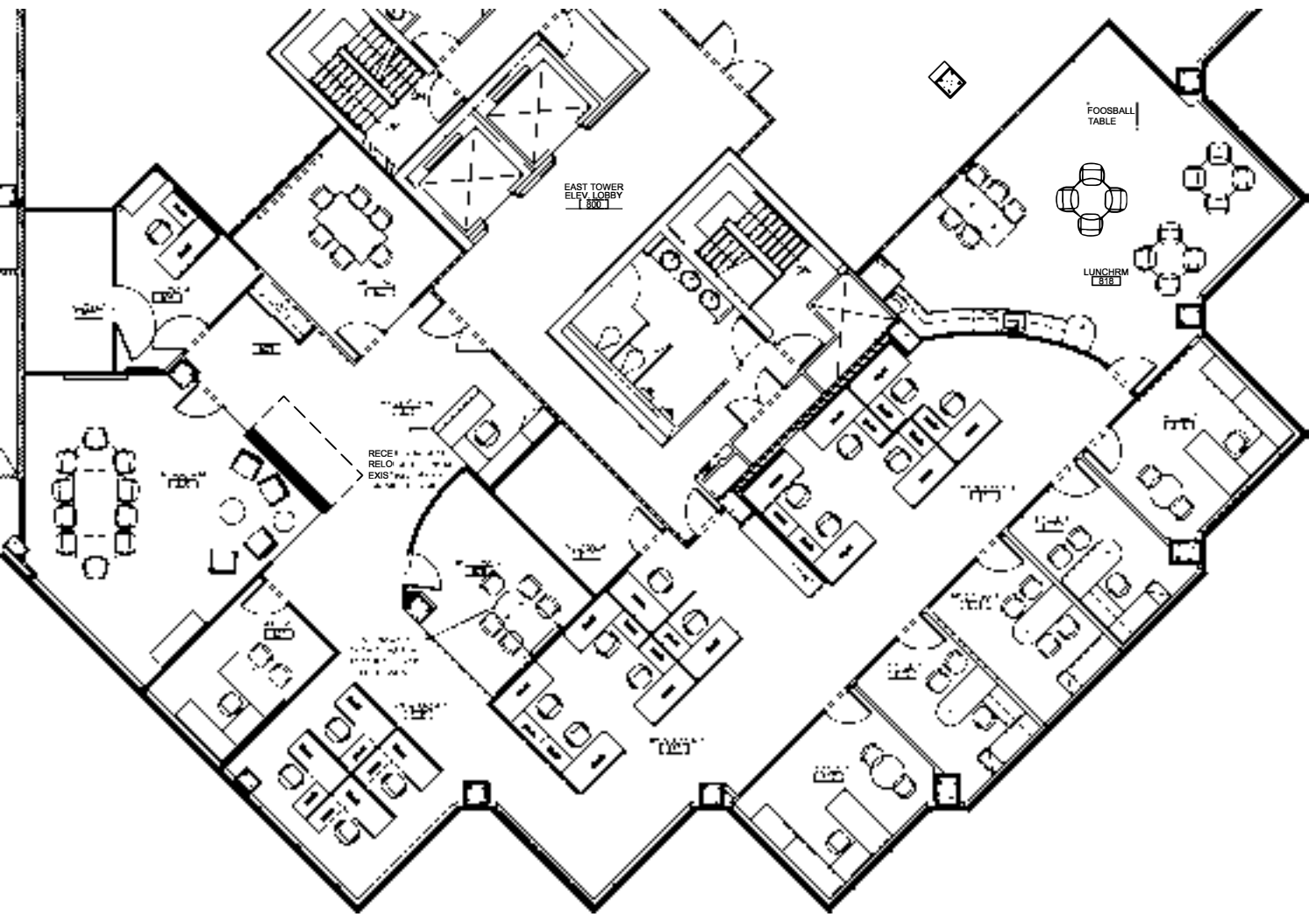
[lennard.com](http://lennard.com)

# 2700 Matheson Boulevard East

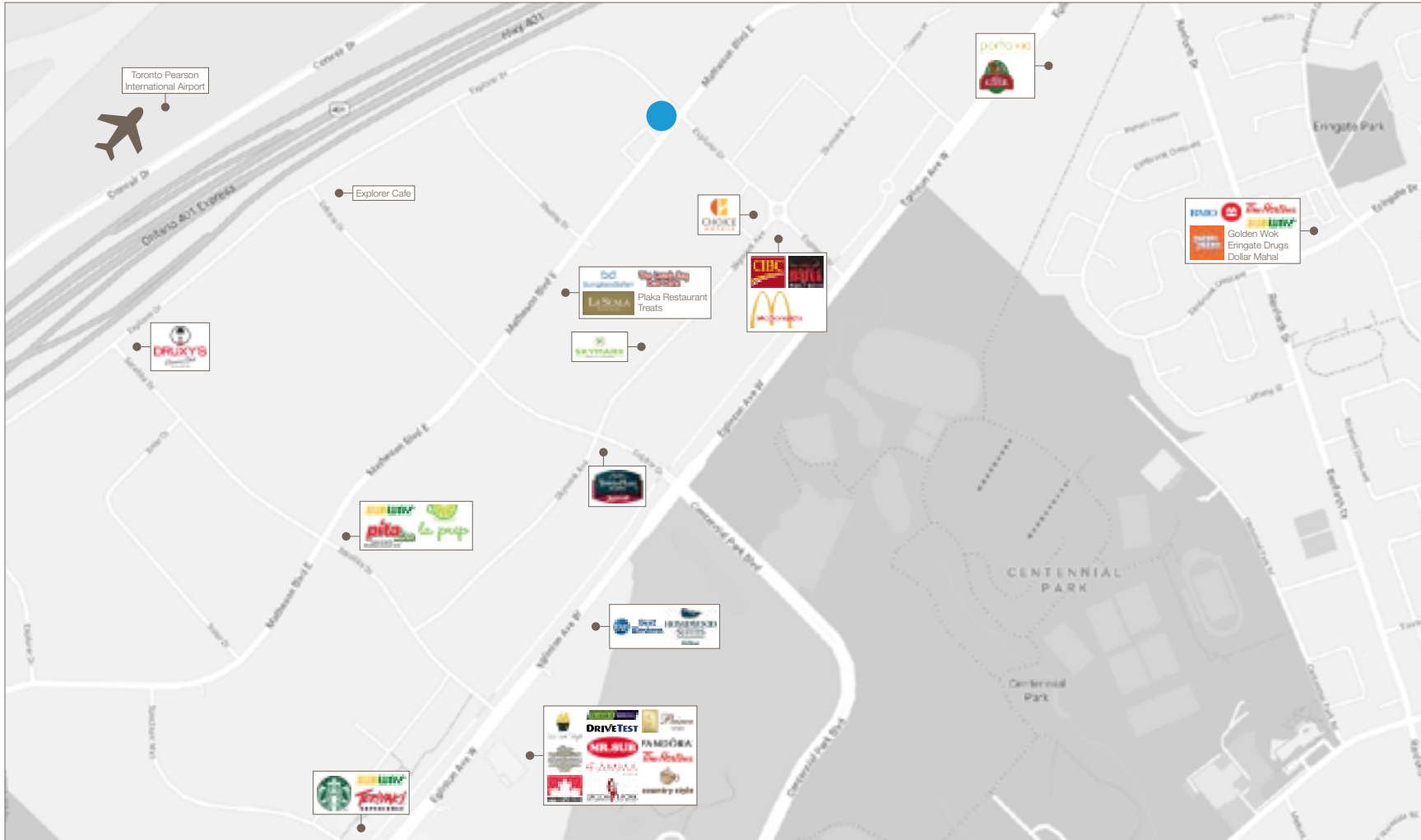


Floor Plan

801E: 6,035 SF



# 2700 Matheson Boulevard East



# 2700 Matheson Boulevard East



Photos: Building Lobby



**Lennard:**



# 2700 Matheson Boulevard East



**miWAY**

## Mississauga Transitway

Effective May 1, 2017

- Transitway Station
- Parking
- Mississauga Transitway
- MiExpress Route All Day Service
- MiExpress Route AM/PM Rush Hour Service
- MiExpress Route
- MiLocal Route

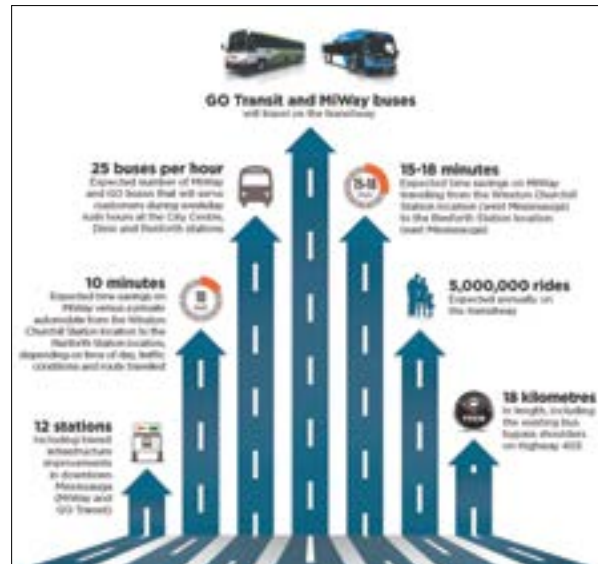


Image source: MiWay, mississauga.ca/portal/miway

## Lennard:

Jim O'Reilly, Partner\*

T: 905.247.9230 • C: 416.575.5325

[joreilly@lennard.com](mailto:joreilly@lennard.com)

Brian Lynett, Partner\*

T: 905.247.9222 • C: 416.347.3902

[blynett@lennard.com](mailto:blynett@lennard.com)

602-350 Burnhamthorpe Road W, Mississauga

905.625.5020 • [lennard.com](http://lennard.com)



\*Sales Representative

Statements and information contained are based on the information furnished by principals and sources which we deem reliable but for which we can assume no responsibility. Lennard Commercial Realty, Brokerage 2020