



# Office space for lease

3601 HIGHWAY 7 EAST, MARKHAM, ON

---

AVISON  
YOUNG

---

 **BEST  
MANAGED  
COMPANIES**

Platinum member





#### LOCATION ADDRESS

3601 Highway 7 E, Markham ON  
Units 206-212

#### SIZE

6,960 SF

#### ASKING NET RENT

\$22.00 PSF

#### ADDITIONAL RENT (2025 EST.)

\$23.05 PSF (*utilities & janitorial seperate*)



Well maintained in a prominent  
Class A Markham office building



Proximity to Highways 404 and 407



Direct access to transit



Convenient access to many amenities



Underground and surface  
parking available

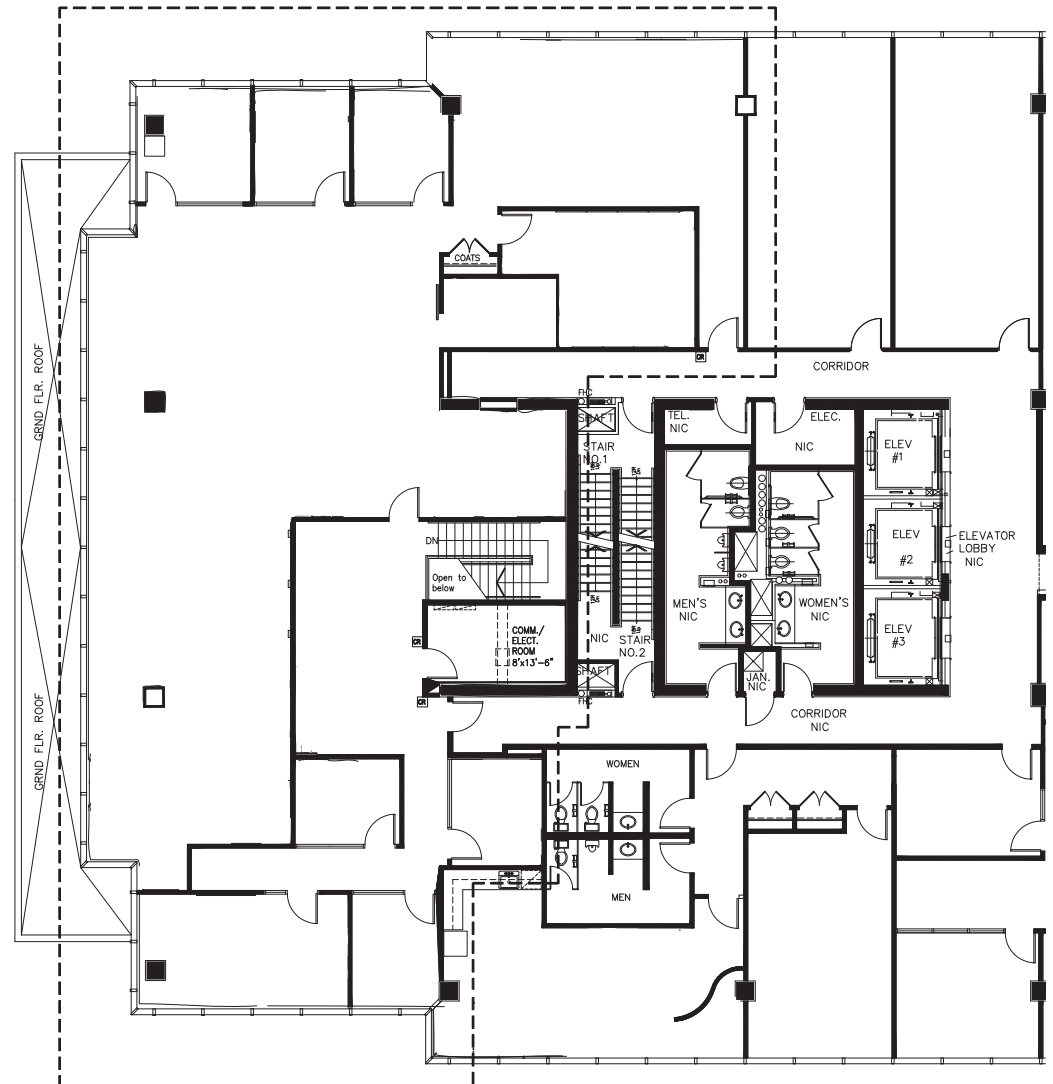


# Floor plan

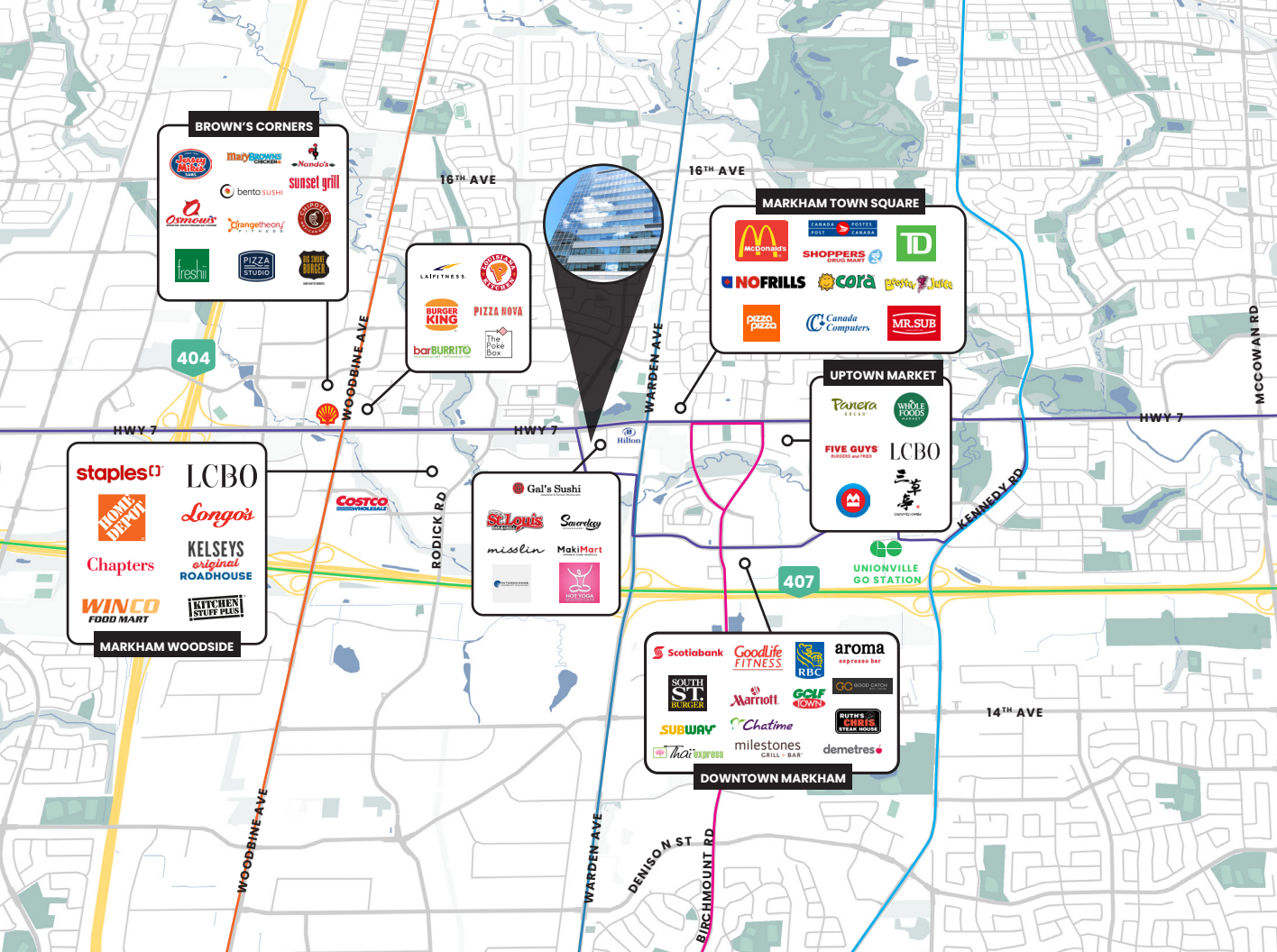
3601 Highway 7 East  
Unit 206-212: 6,960 sf

## Suite Highlights

- 9 Offices
- Meeting rooms
- Conference room
- Staff room
- Kitchen







## Amenities within 5km

25

FITNESS  
CENTRES

1.4K

RESTAURANTS  
&  
CAFÉS

79

BANKS

3.8K

RETAIL

28

GAS  
STATIONS

41

HOTELS

## Transit Connections



Highway 7



Woodbine



Birchmount



Warden



Oshawa



Kennedy





# Office Space For Lease

**3601 HIGHWAY 7 EAST  
MARKHAM, ON**

**Get more information**

**Matt Gunning**, SIOR

Broker | Principal

905 968 8003

[matt.gunning@avisonyoung.com](mailto:matt.gunning@avisonyoung.com)

**Mark Sullivan**

Sales Representative | Vice President

905 968 8010

[mark.sullivan@avisonyoung.com](mailto:mark.sullivan@avisonyoung.com)

**AVISON  
YOUNG**

**CANADA  
BEST  
MANAGED  
COMPANIES**

Platinum  
member

**Avison Young Commercial Real Estate Services, LP, Brokerage**

55 Commerce Valley Dr. W., Suite 501, Markham, ON L3T 7V9

Office +1 905 474 1155 Fax +1 905 886 5744 [avisonyoung.ca](http://avisonyoung.ca)

© 2025 Avison Young Commercial Real Estate Services, LP, Brokerage. Information contained herein was obtained from sources deemed reliable and, while thought to be correct, have not been verified. Avison Young does not guarantee the accuracy or completeness of the information presented, nor assumes any responsibility or liability for any errors or omissions therein.

Updated: 01/15/25