

**AVISON
YOUNG**

For Lease

PARKWEST BUSINESS CENTRE

Building 2 | 12340 149 St

Building 4 | 15015 123 Ave

Building 5 | 15023 123 Ave

Building 6 | 15111 123 Ave

- Exclusive use tenant patios
- Ample parking including heated underground parking and surface EV charging stations
- Abundant natural light
- Nicely improved space ready for immediate occupancy
- Excellent access to Yellowhead Trail and 149th Street



Manulife Investment Management



For Lease

PARKWEST BUSINESS CENTRE

Building 2 | 12340 149 St

Available: 2nd Floor: 12,294 sf
Demising Options Available

Net Rent: Starting at \$13.00 psf

Additional Rent: \$17.32 psf (2024)

Tenant Inducements: Negotiable

Building 4 | 15015 123 Ave

Available: Suite 001: 4,120 sf
Suite 201: 2,804 sf
Suite 202: 2,140 sf

Net Rent: Suite 001: \$5.00 psf
Suite 201: Starting at \$13.00 psf

Additional Rent: \$13.07 psf (2024)

Tenant Inducements: Negotiable

Building 5 | 15023 123 Ave

Available: Suite 201: 3,985 sf
Suite 202: 6,096 sf
Suite 203: 3,197 sf

2nd floor contiguous up to 13,278 sf

Net Rent: Starting at \$13.00 psf

Additional Rent: \$20.30 psf (2024)

Tenant Inducements: Negotiable

[CLICK TO VIEW 360° TOURS](#)

Building 6 | 15111 123 Ave

Available: Suite 12227: 3,347 sf

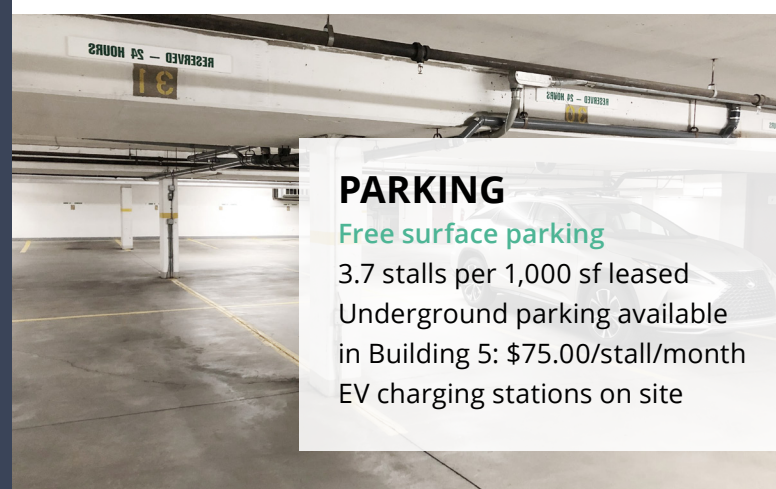
Net Rent: Starting at \$13.00 psf

Additional Rent: \$17.26 psf (2024)

Tenant Inducements: Negotiable



Building 5 shared patio



PARKING

Free surface parking

3.7 stalls per 1,000 sf leased

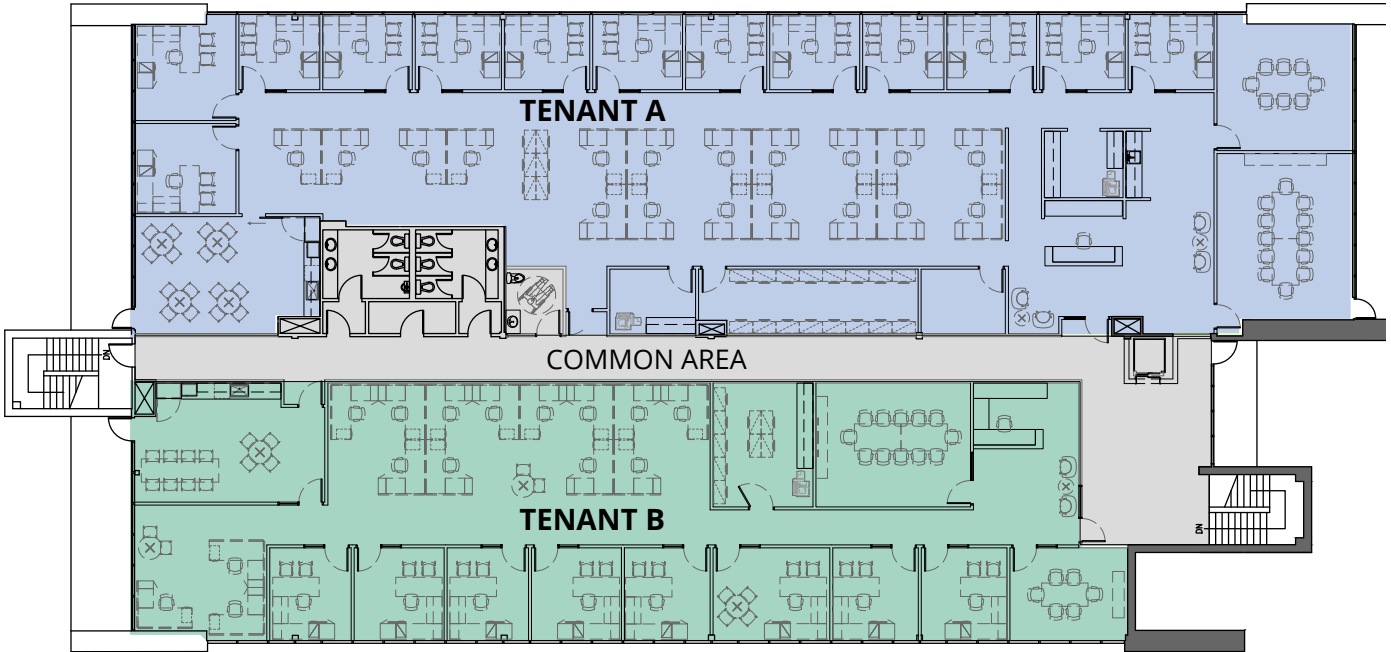
Underground parking available

in Building 5: \$75.00/stall/month

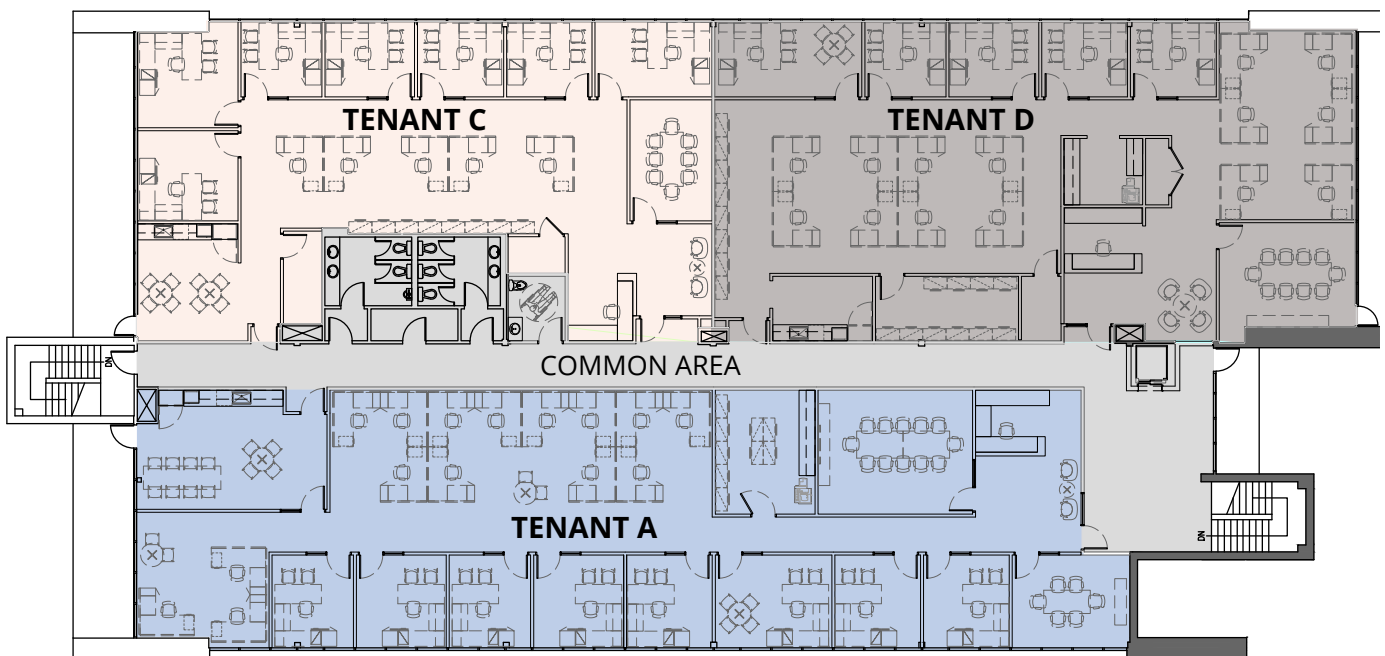
EV charging stations on site

Demising options:

- Option A ±4,471 sf
- Option B ±6,595 sf

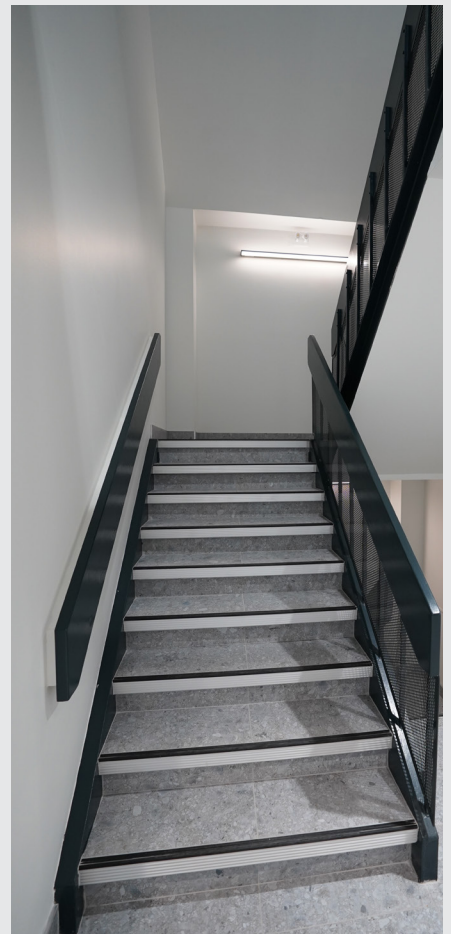


- Option A ±4,471 sf
- Option C ±2,940 sf
- Option D ±3,654 sf



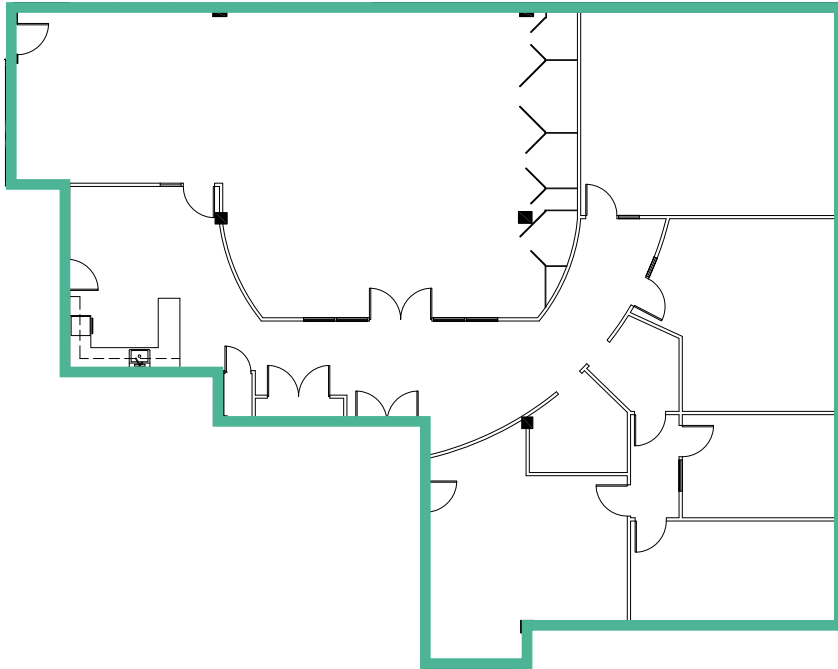


Newly installed lift



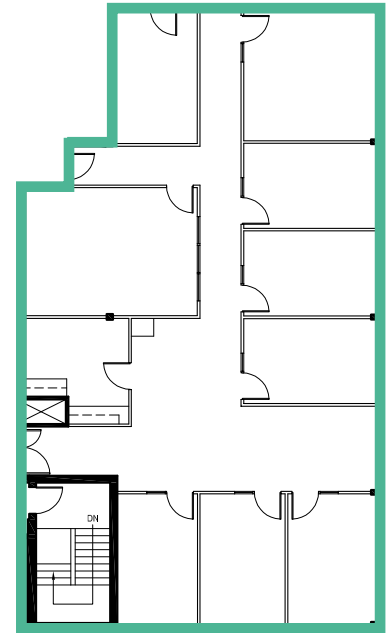
Suite 001: 4,120 sf

Below Grade



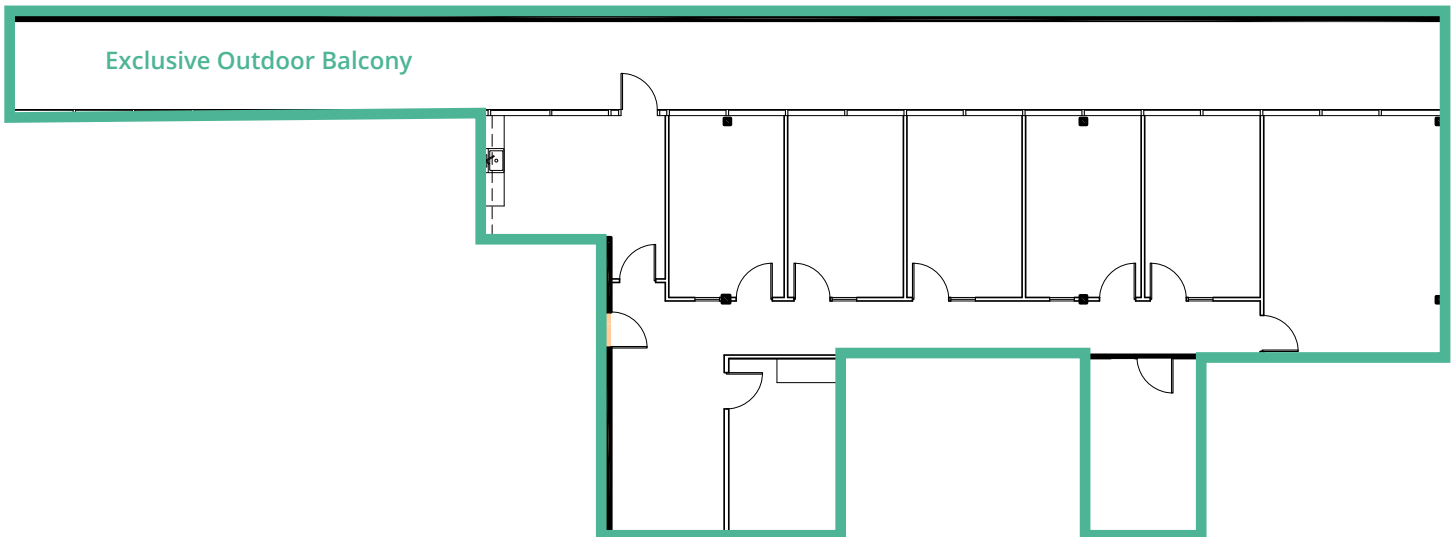
Suite 201: 2,804 sf

2nd Floor



Suite 202: 2,140 sf

2nd Floor

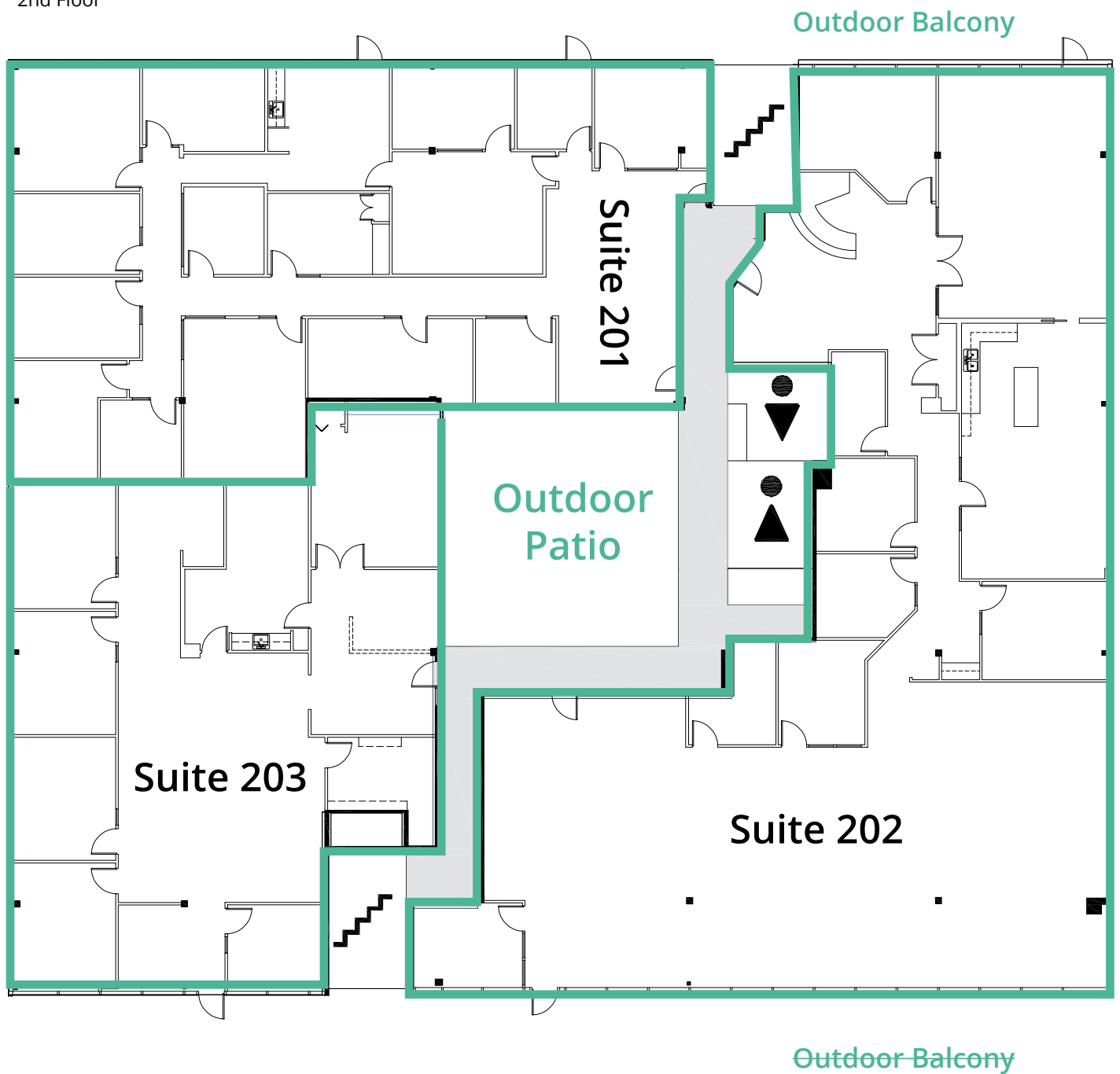


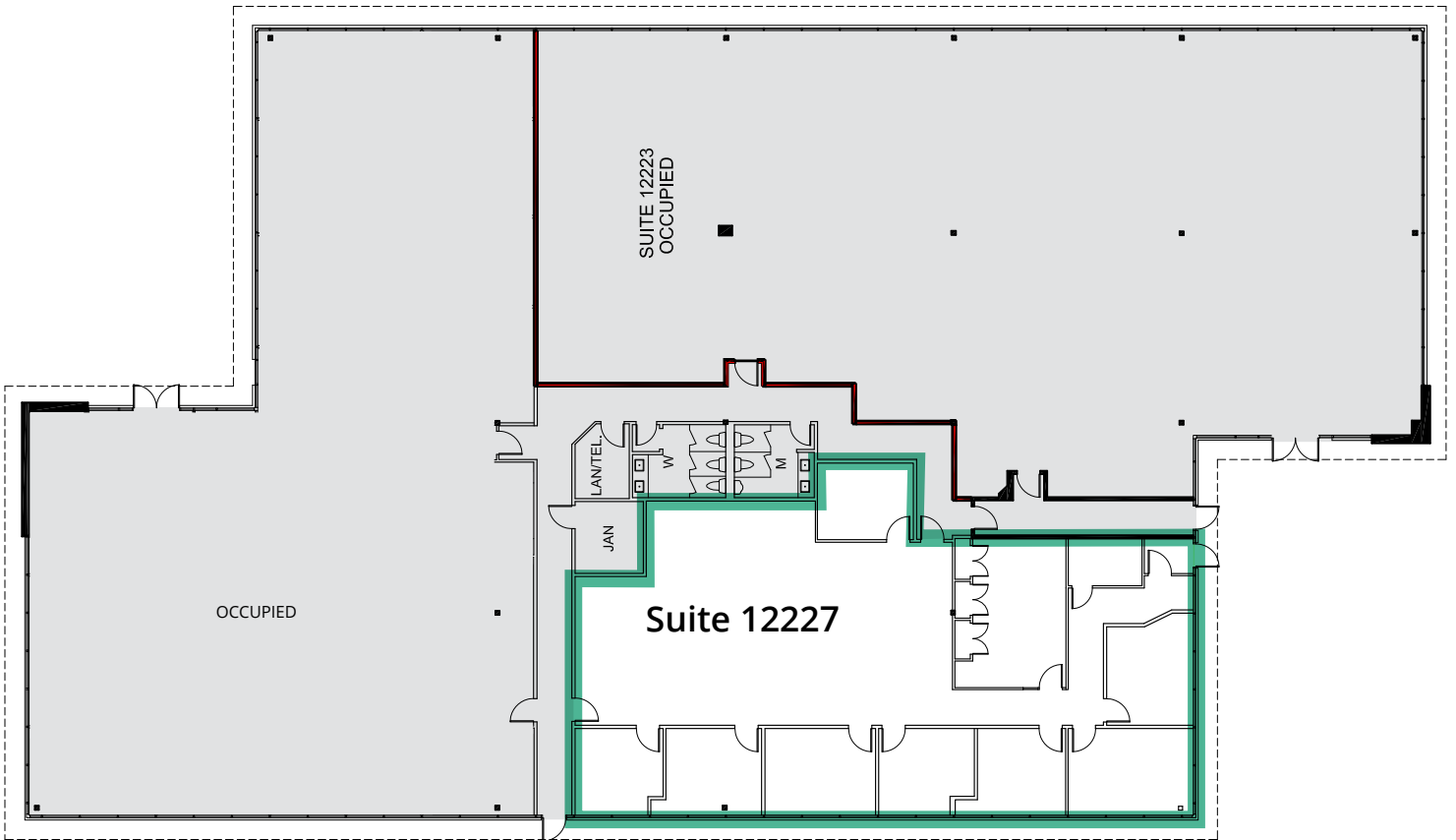
Suite 201: 3,985 sf

Suite 202: 6,096 sf

Suite 203: 3,197 sf

2nd Floor

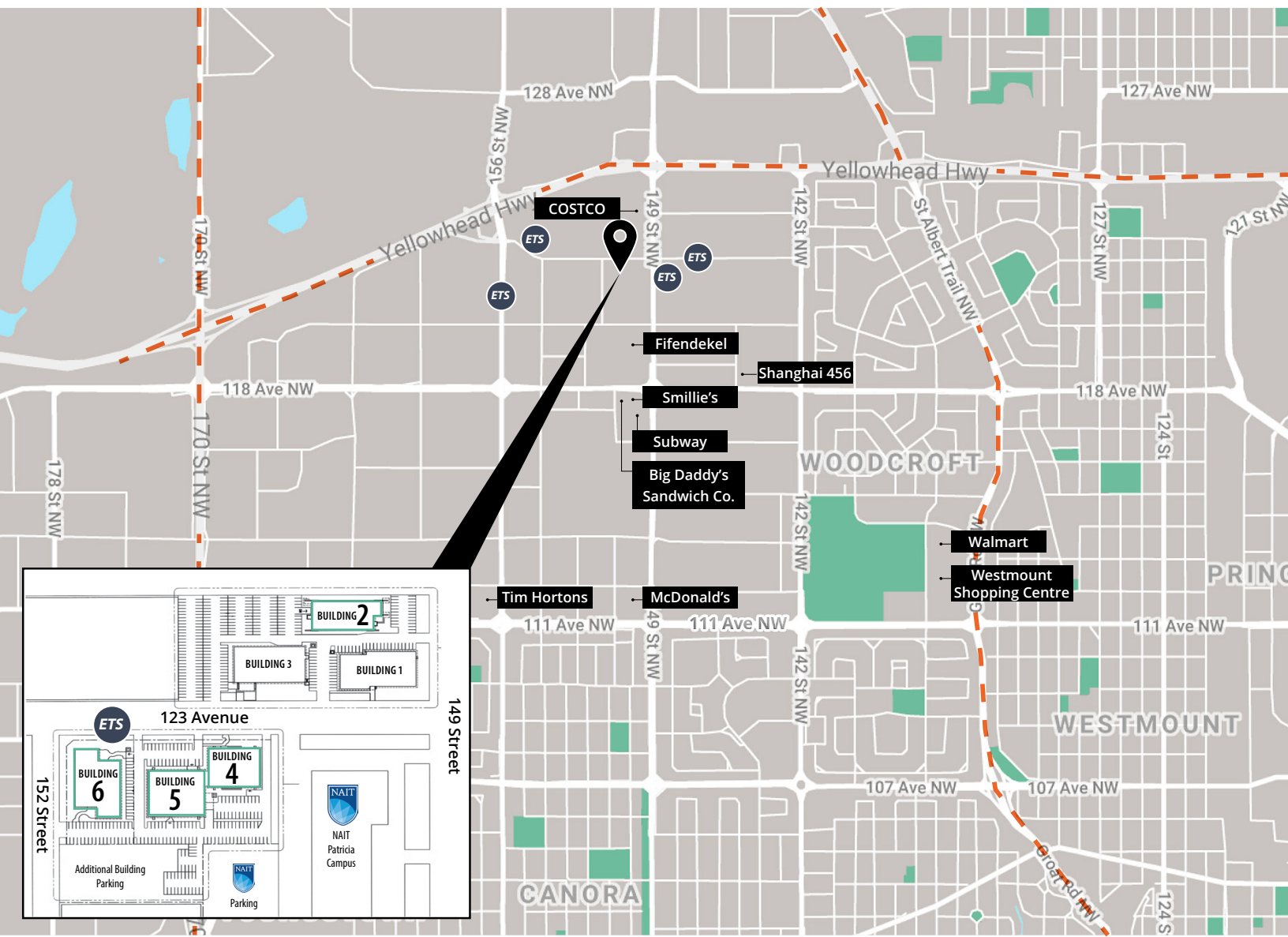




For Lease

PARKWEST BUSINESS CENTRE

Building 2 | 12340 149 St
Building 4 | 15015 123 Ave
Building 5 | 15023 123 Ave
Building 6 | 15111 123 Ave



AVISON YOUNG

Get more information

Mark Hartum

Principal, SIOR
780 429 7557

mark.hartum@avisonyoung.com

Hillary Williams

Senior Associate
780 429 7564

hillary.williams@avisonyoung.com

Jason Gardner

Vice President
780 429 7569

jason.gardner@avisonyoung.com

Cailey Martiniuk

Sales & Executive Assistant
780 429 7553

cailey.martiniuk@avisonyoung.com

 **Manulife**
Investment Management