

# For Lease

1120 - 68th Avenue NE  
Calgary AB

Recently  
leased! 40,000 sq.ft.

Up to 48,000 sq.ft. available



**Large office space**  
with a fresh new look!

**Allan Zivot**  
Principal  
403 860 1954  
allan.zivot@avisonyoung.com

**Connor Khademazad**  
Associate  
587 293 3363  
connor.khademazad@avisonyoung.com

**AVISON  
YOUNG**



### Highlights

- Two storey suburban office building with distinct, separate signage presence
- Overhead loading doors available for main floor
- Common gym amenity coming soon
- Exceptional parking ratio with **342 surface stalls** equating to a ratio of **3.8 stalls per 1,000 rentable square feet**
- Uniquely designed office building with the ability to be occupied by a single tenant or be demised to accommodate multiple tenants and a wide variety of uses
- Building wide sprinkler system, **high electrical power** (TBV) service for flex office / lab use.
- Accessible by two bus transit routes (32 and 69), with stops adjacent to the property
- Built in 3 phases (1997, 2002, and 2009)

### Particulars

|                        |  |
|------------------------|--|
| Address:               | 1120 - 68th Avenue NE  |
| Total area:            | 90,133 sf  |
| <b>Available area:</b> | <b>48,731 sf (approx.)</b>                                       |
| Demising options       | 10,000 sf +  |
| Site size:             | 5.76 acres   |
| Occupancy:             | Q2 2024  |
| <b>Parking stalls:</b> | <b>342 Energized (3.8 / 1,000 sf)</b>                            |
| Land use:              | I-B (Industrial - Business Direct)<br>Medical will be considered |
| Lease rate:            | Market   |
| Op. costs:             | \$14.00 / sf (2024 est.)   |
| Ceiling Heights:       | 9' under t-bar<br>13' 6" under q-deck                            |

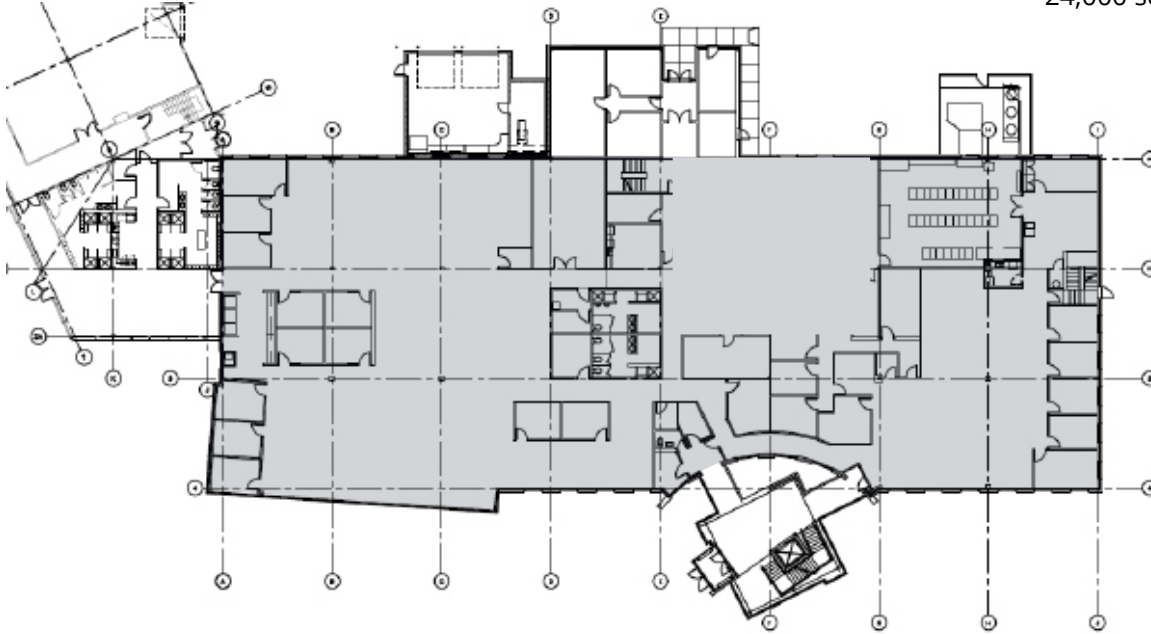
# South building 1st floor

## Demising Option 1A

24,000 sq.ft. Total Rentable Area

Main Floor

(approx.)

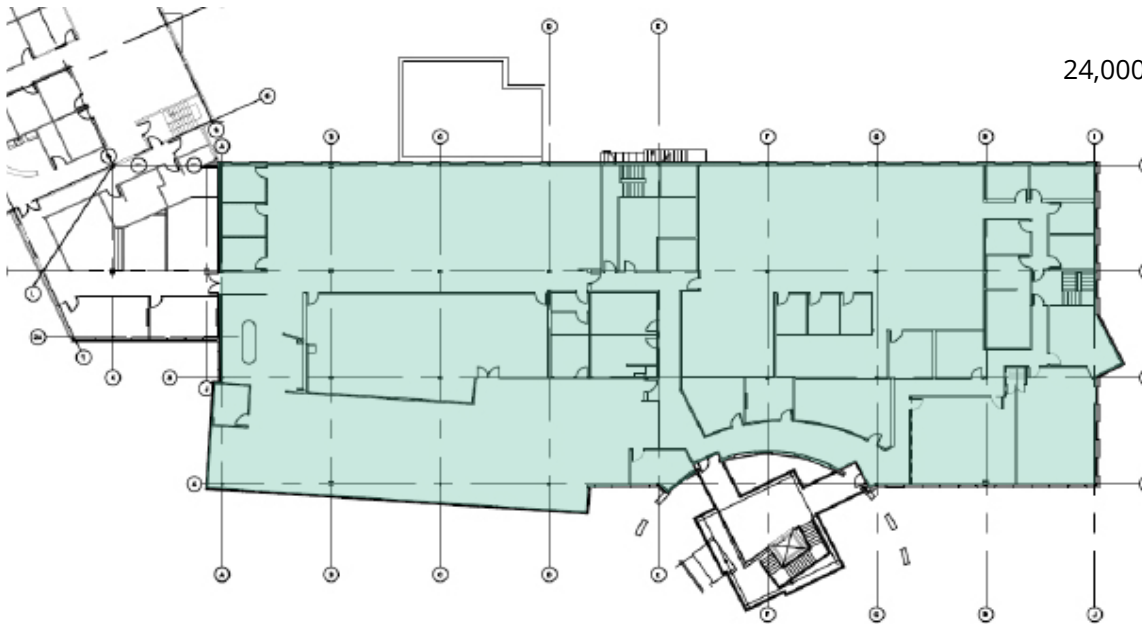


## Demising Option 2A

24,000 sq.ft. Total Rentable Area

Second Floor

(approx.)



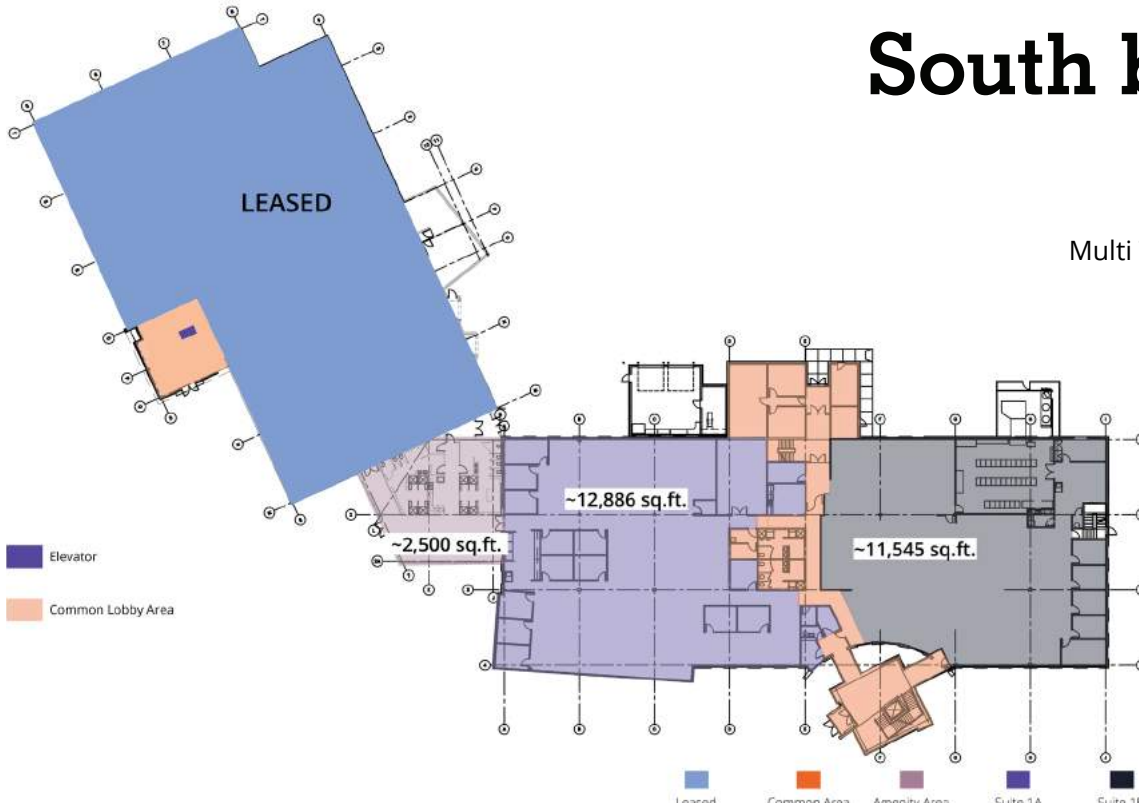
*Proposed demising options can be structured depending on Tenant's needs*

*Actual square footages subject to change*

Demising Option 1B

# South building 1st floor

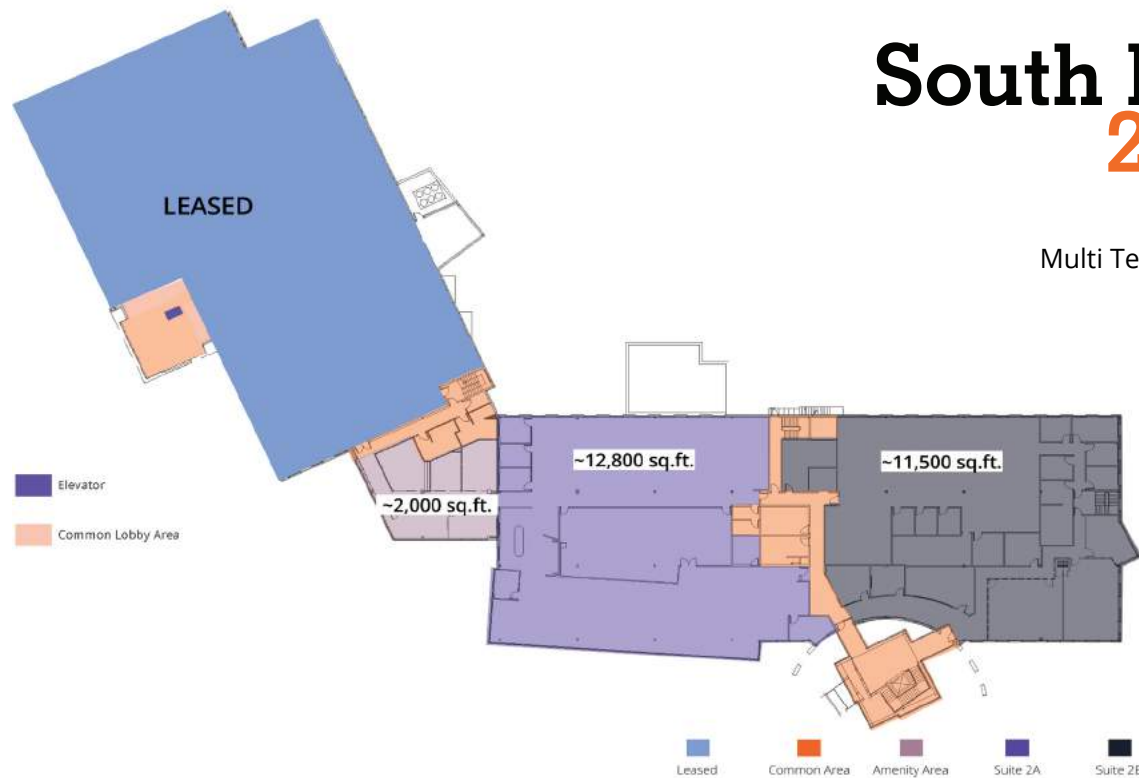
Multi Tenant Main Floor option



Demising Option 2B

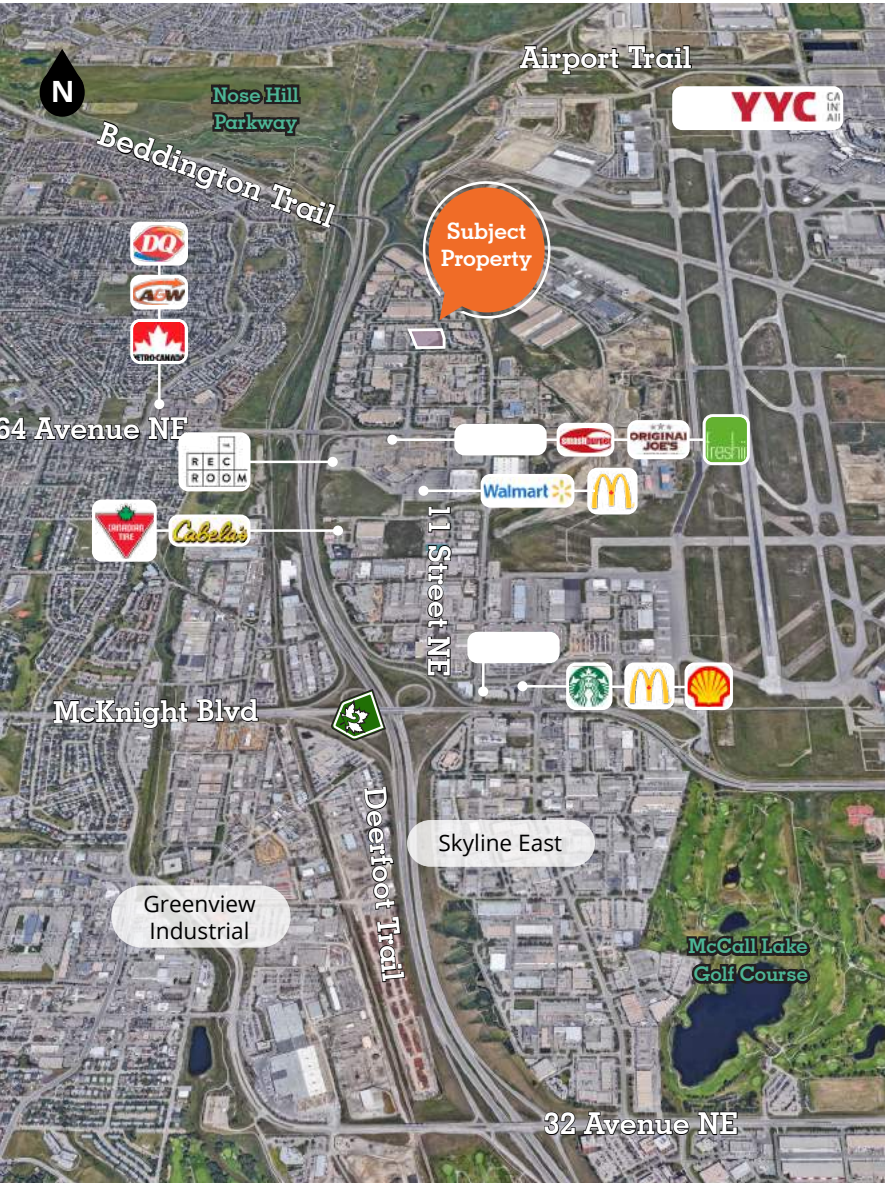
# South building 2nd floor

Multi Tenant Second Floor option



Proposed demising options can be structured depending on Tenant's needs

Actual square footages subject to change



### Travel Times



The YYC Airport is 7 mins North  
Calgary downtown core is 10 mins South



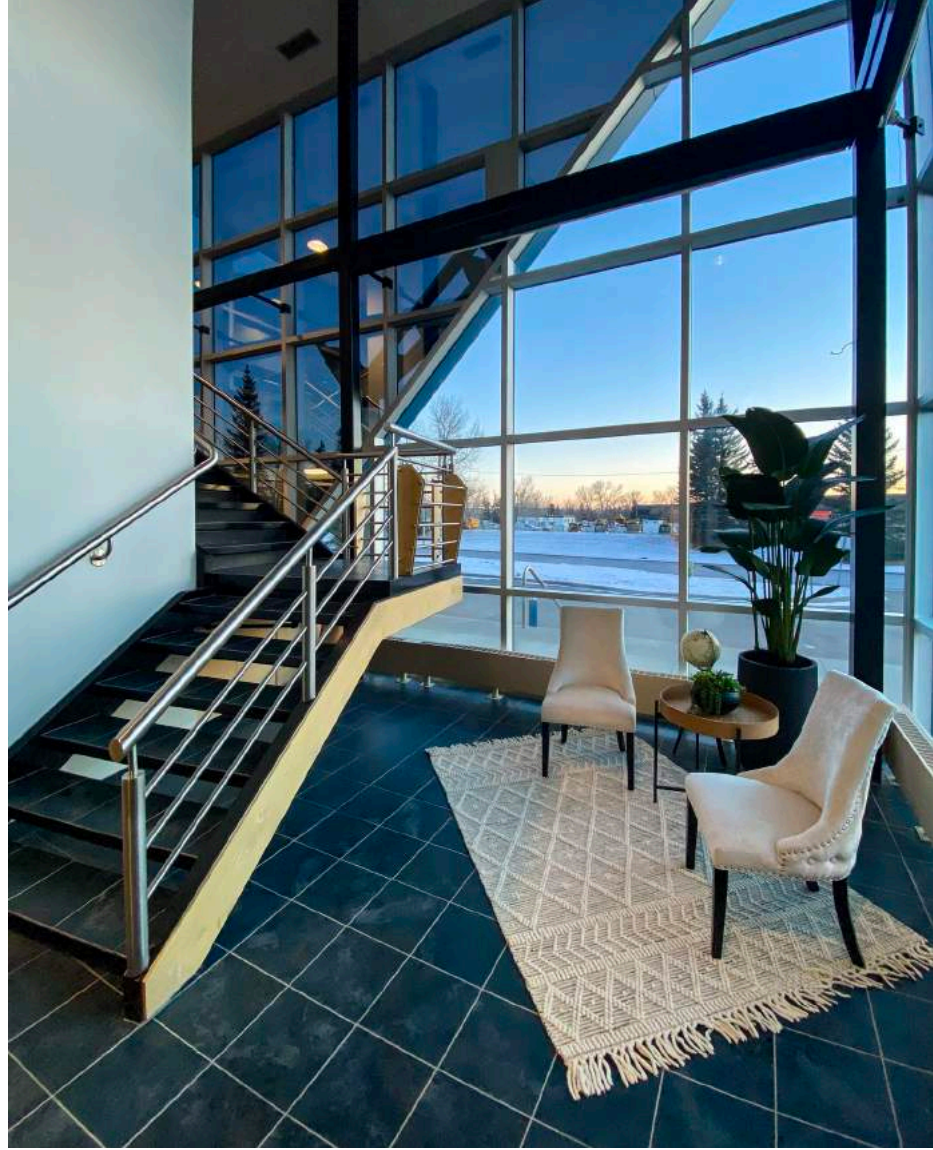
Route 32 (Huntington) is a 1 min walk  
Route 69 (Deerfoot Centre) is a 1 min walk South

### Location Highlights

- Located in the Deerfoot Business Park with quick and easy vehicle access from Deerfoot Trail by way of the 64 Avenue NE exit
- Close proximity to the Calgary International Airport and the Calgary Downtown Core
- Situated just north of Deerfoot City, a 1.1 million square foot, newly redeveloped retail centre that includes shopping, dining and entertainment amenities serving northeast Calgary







# Thank you for your interest!

If you would like more information on this offering  
please get in touch.

**Allan Zivot**

Principal  
403 860 1954  
allan.zivot@avisonyoung.com

**Connor Khademazad**

Associate  
587 293 3363  
connor.khademazad@avisonyoung.com

**Visit us online**  
[avisonyoung.com](http://avisonyoung.com)

---

© 2023. Avison Young. Information contained herein was obtained from sources deemed reliable and, while thought to be correct, have not been verified. Avison Young does not guarantee the accuracy or completeness of the information presented, nor assumes any responsibility or liability for any errors or omissions therein.

Eighth Avenue Place, 4300, 525 - 8th Avenue SW | Calgary, AB T2P 1G1 | +1 403 262 3082

**AVISON  
YOUNG**