



750

PALLADIUM DRIVE
KANATA, ONTARIO

FOR LEASE

AVAILABILITIES

Suite 310 = 7,233 sq.ft.

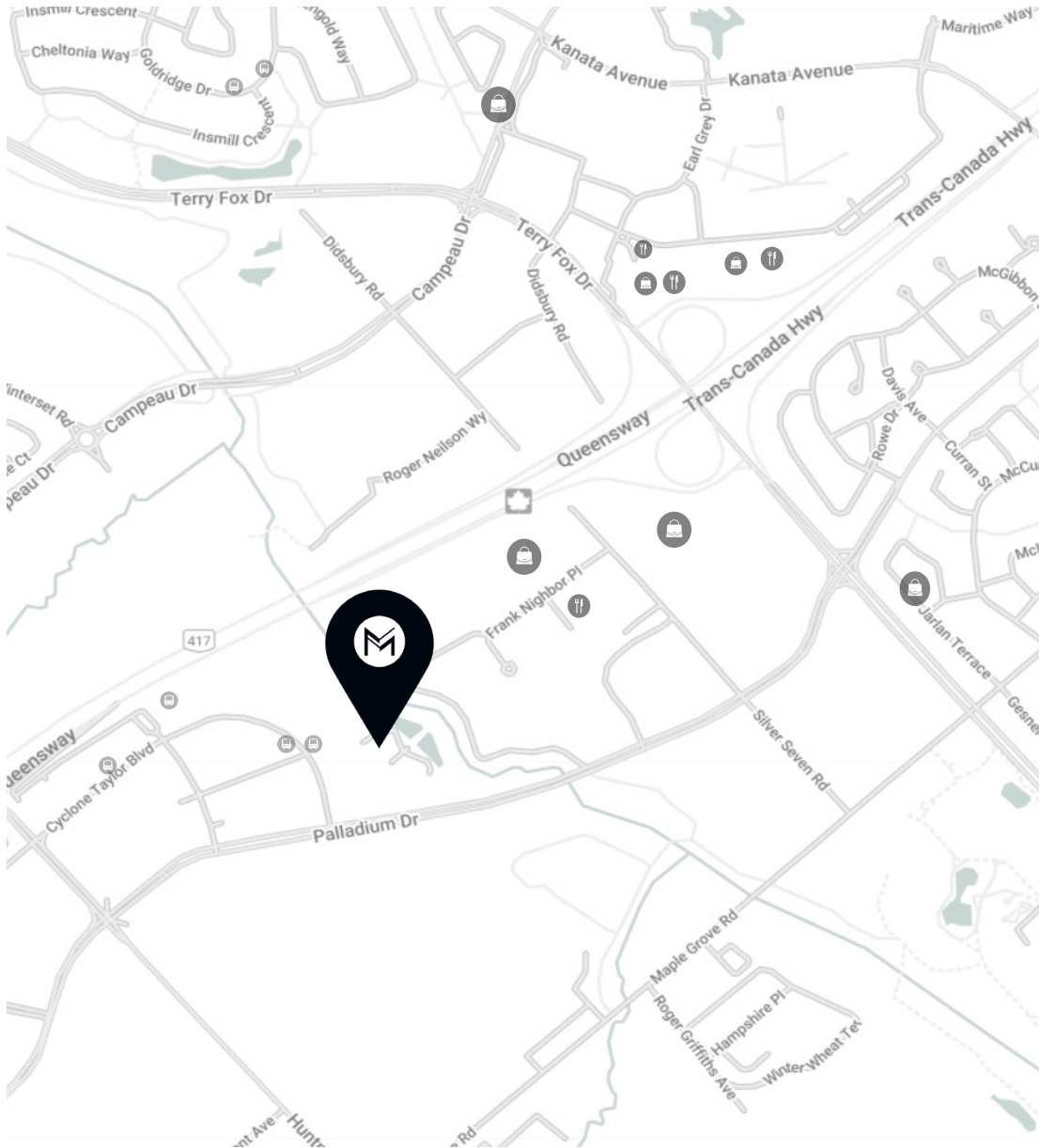
Suite 315 = 1,916 sq.ft.

* Suites 310 & 315 can be made
contiguous for a total of 9,146 sq.ft.

MACH
PROPERTY

SURROUNDING AREAS

The building is a walking distance to Canadian Tire Centre, home to Ottawa Senators, Marshy's BBQ & Grill and the YMCA. Apart from being situated between two major roads, the Queensway, it is only a few minutes to the Kanata Centrum and the Tanger outlets, Kanata's Premiere retail venues.



TangerOutlets

750 PALLADIUM DRIVE, KANATA

NET RENT	CAM	TAXES	TOTAL ADDITIONAL RENT
Please contact agent	\$10.59	\$4.76	\$15.35

FEATURES	
Year built	2001
Building type	Class A suburban office
Number of floors	3-storey
Floor area	27,056 sq. ft.
Building Amenities	The building includes showers, while adjacent building at 770 Palladium has a shared gym and common boardrooms
Telecom providers	Bell, Rogers, Telus, Allstream.

LEASING INQUIRY

John Esposito

Senior Director of Leasing

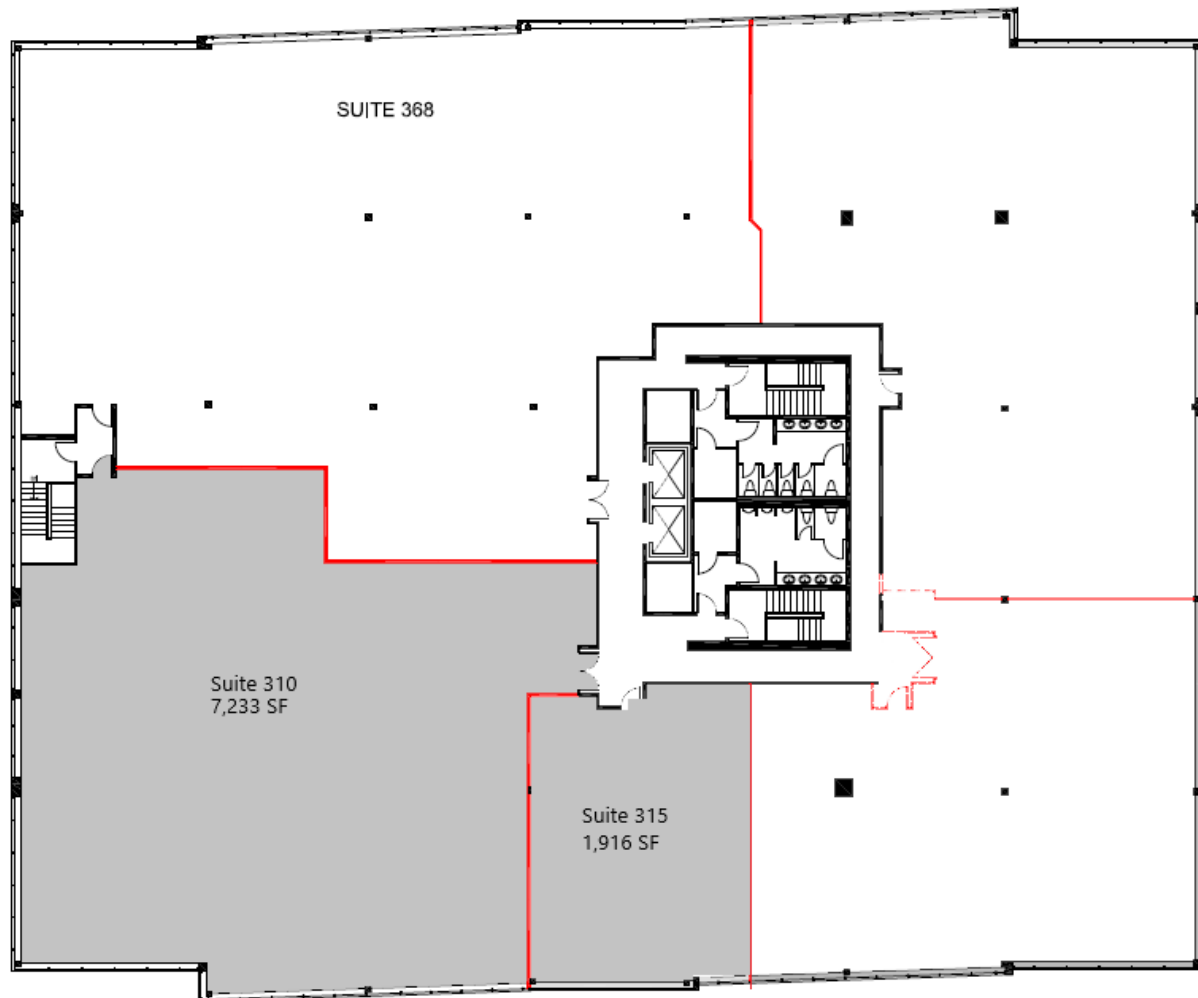
jesposito@groupemach.com

Max Francischiello, MBA

Senior Vice-President, Leasing

mfrancischiello@groupemach.com

FLOOR PLAN



MACH

groupemach.com |  |  | 

CONTACT US
FOR LEASING OPPORTUNITIES
(613) 565-4848