

4,334 SF

2nd Floor - 7440 Fraser Park Drive Burnaby, BC

Highlights

Opportunity to lease 4,334 SF of second floor office space in the growing Big Bend neighbourhood of Burnaby. Just four minutes to Marine Way, the location offers easy access to Burnaby, Vancouver & New Westminster and also links to the Queensborough Bridge. There is a direct bus route to Edmonds SkyTrain Station via #116 from Byrne Road and North Fraser Way. The Fraser Foreshore Park provides a riverfront trail and exercise area across the street.

Brian Mackenzie

Vice President, Leasing & Sales
604 691 6618
bmackenzie@naicommercial.ca

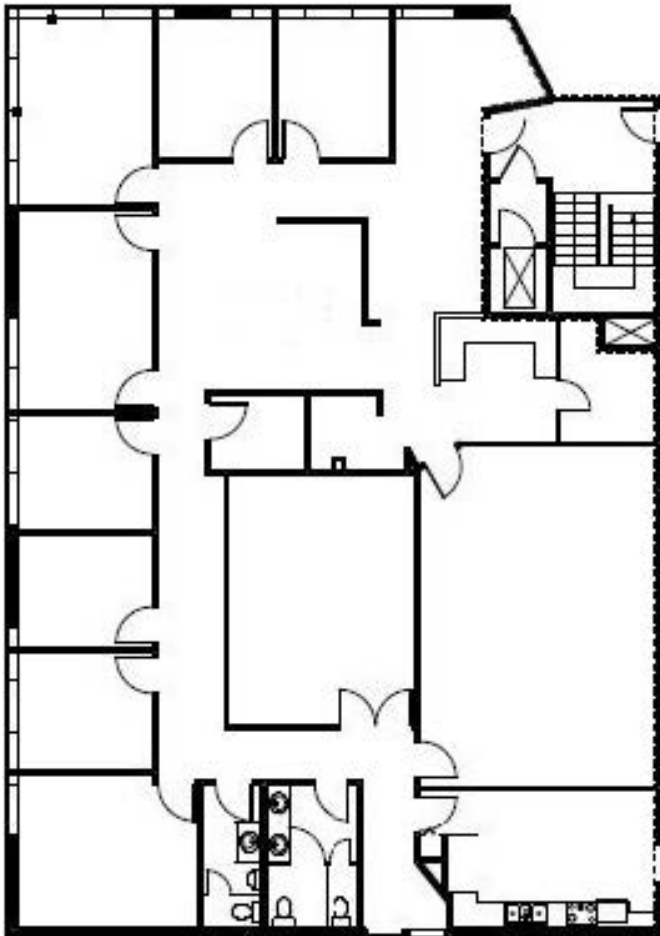
NAI Commercial

1075 W Georgia St, Suite 1300
Vancouver, BC V6E 3C9
+1 604 683 7535
naicommercial.ca

7440 Fraser Park Drive

Burnaby, BC

Second Floor - Floor Plan



Property Details

Size

4,334 SF (approx.)

Net Rent

\$15.00/SF

Operating Costs & Property Taxes (2024 est.)

\$11.00/SF including utilities

Features

- ▶ Corner unit with river views
- ▶ Brand new rooftop HVAC units throughout
- ▶ Free parking plus ample street parking
- ▶ Park and river front trail across the street
- ▶ Skylights
- ▶ Signage available
- ▶ Elevator access

Availability

Immediate

Amenities

Burnaby Fraser Foreshore Park

Immediately across the street from 7434 Fraser Park Drive, this picturesque riverside park provides a wonderful opportunity to experience and explore the mighty Fraser River. The shoreline trail is perfect for a jog, walk or leisurely stroll. Log benches dot the pathway, so you can rest and enjoy a view of the marine traffic on this busy waterway while having lunch.

Riverway Golf Course

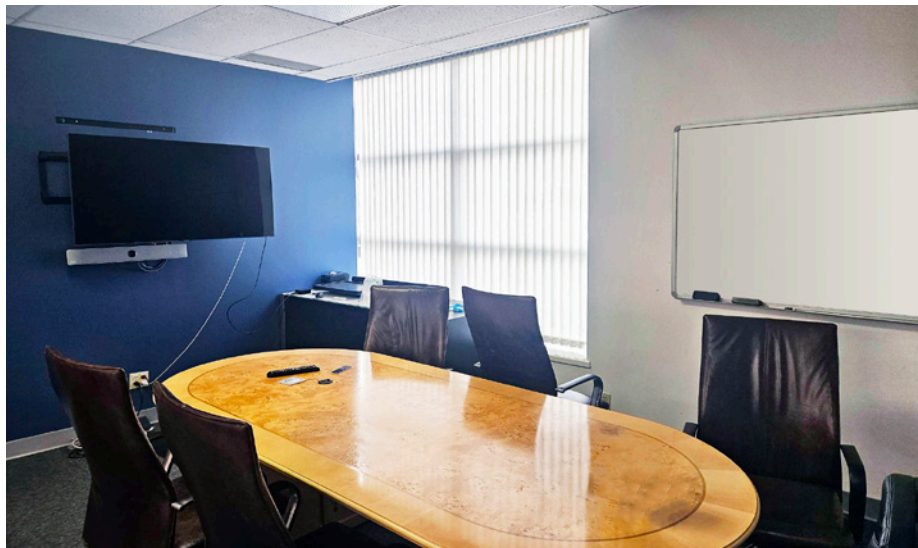
This classic 18-hole championship golf course is one of the premier layouts in the area. It's imaginatively designed, link-style fairways are lined by sweeping mounds of wild fescue. And an array of white tan bunkers and water hazards are strategically placed to make every shot exciting. The course's diverse yardage - 5,400 to 7,000 - lets you select the appropriate length and challenge that suit your game and enjoyment level. Located minutes from 7434 Fraser Park Drive.



BURNABY FRASER FORESHORE PARK



RIVERWAY GOLF COURSE





BYRNE RD

MARINE WAY MARKET

- Cactus Club Cafe
- McDonald's
- Tim Hortons
- Starbucks
- London Drugs
- Mark's
- Canadian Tire
- Save-On-Foods
- Pokerrito
- Vancity
- TD Canada Trust
- Mucho Burrito
- White Spot
- Little Minh's Kitchen

MARINE WAY

N FRASER WAY

FRASER RIVER

7440
FRASER PARK

Brian Mackenzie
Vice President, Leasing & Sales
604 691 6618
bmackenzie@naicommercial.ca

NAI Commercial

No warranty or representation, express or implied, is made as to the accuracy of the information contained herein, and the same is submitted subject to errors, omissions, change of price, rental or other conditions, prior sale, lease or financing, or withdrawal without notice, and of any special listing conditions imposed by our principals no warranties or representations are made as to the condition of the property or any hazards contained therein are any to be implied. Aerial image(s) courtesy of Google, Landsat/Copernicus and BurnabyMap.

NAI Commercial
1075 W Georgia St, Suite 1300
Vancouver, BC V6E 3C9
+1 604 683 7535
naicommercial.ca