



**SHOWROOM/RETAIL SPACE FOR LEASE**

2175 ROBERTSON ROAD  
48,390 SQ FT



# PROPERTY OVERVIEW

---

Standalone showroom/retail opportunity in the heart of the thriving community of Bells Corners. Offering approximately 48,390 square feet of versatile space, the property features one raised loading bay door and ample power. The interior is in base building condition, making it well-suited for large-format retail. Join nearby brands such as Canadian Tire, FreshCo, Dollarama, McDonald's, Rexall and Loblaws in this high-traffic retail destination site.

# PROPERTY DETAILS

---

- 48,390 SF
- Lease Rate \$20.00 PSF (NNN)
- Additional Rent approx. \$7.85PSF
- Available July 1, 2026
- Utilities Extra

# PROPERTY HIGHLIGHTS

---

- Freestanding building
- Ample onsite parking available
- Great signage opportunities
- Zoning AM[287]
- 400 amp power
- 1 dock loading door
- 18 foot ceiling height
- Sprinklers



# THRIVING COMMUNITY OF BELLS CORNERS

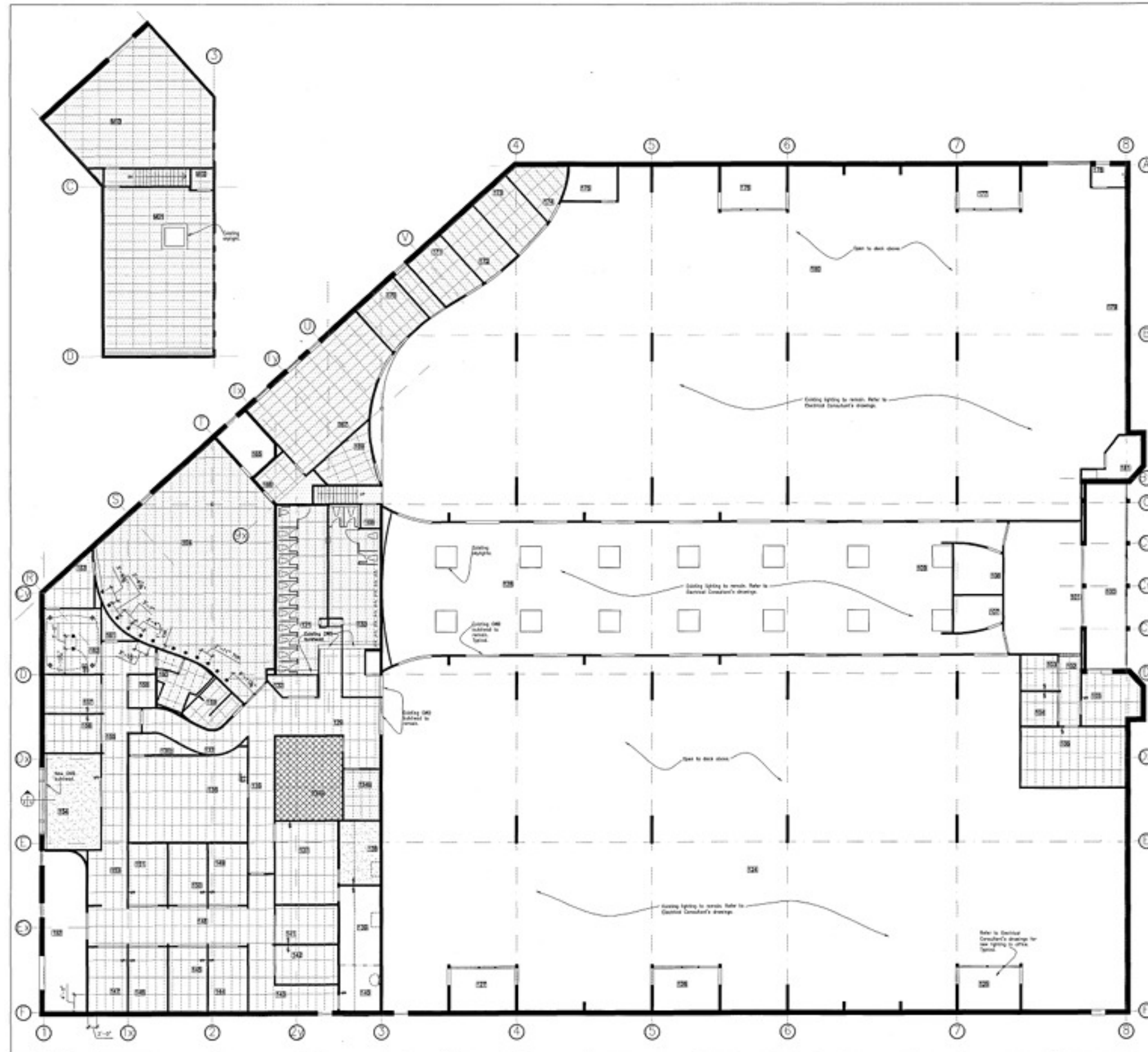


Bells Corners is a welcoming west-end neighbourhood in Ottawa known for its small-town feel, convenient location, and easy access to nature. Centered along Robertson Road, the area blends long-standing local businesses with everyday amenities, giving residents everything they need close to home.

Tucked against the Greenbelt, Bells Corners offers quick access to walking and cycling trails, parks, and natural spaces. Its mix of mid-century homes, townhouses, and newer developments makes it an attractive option for families, young professionals, and retirees.

With easy transit connections to downtown Ottawa, quick access to Highway 417 and nearby employment hubs like Kanata, Bells Corners remains one of Ottawa's most diverse and thriving neighbourhoods.

# FLOOR PLAN



# RETAILER MAP



# THANK YOU

**We would love to tour the property and discuss a leasing opportunity.  
Please contact one of the representatives below, and we can get started!**



**JOHN ZINATI**

(o) 613.853.4106

(c) 613.880.4106

[john@zinatirealty.com](mailto:john@zinatirealty.com)