



# TRIUMPH BUILDING

10441 124 Street Edmonton, AB

## Lease

Great Economical Office Opportunity Close to Downtown

Lease Rate

**\$12.00**

### Property Highlights

- On site parking
- Professionally managed
- Easy access to public transit
- CB1 zoning allows for a variety of business and health care services uses

For more information contact:

**Chad Boddez**

Senior Vice President

780 328 2567

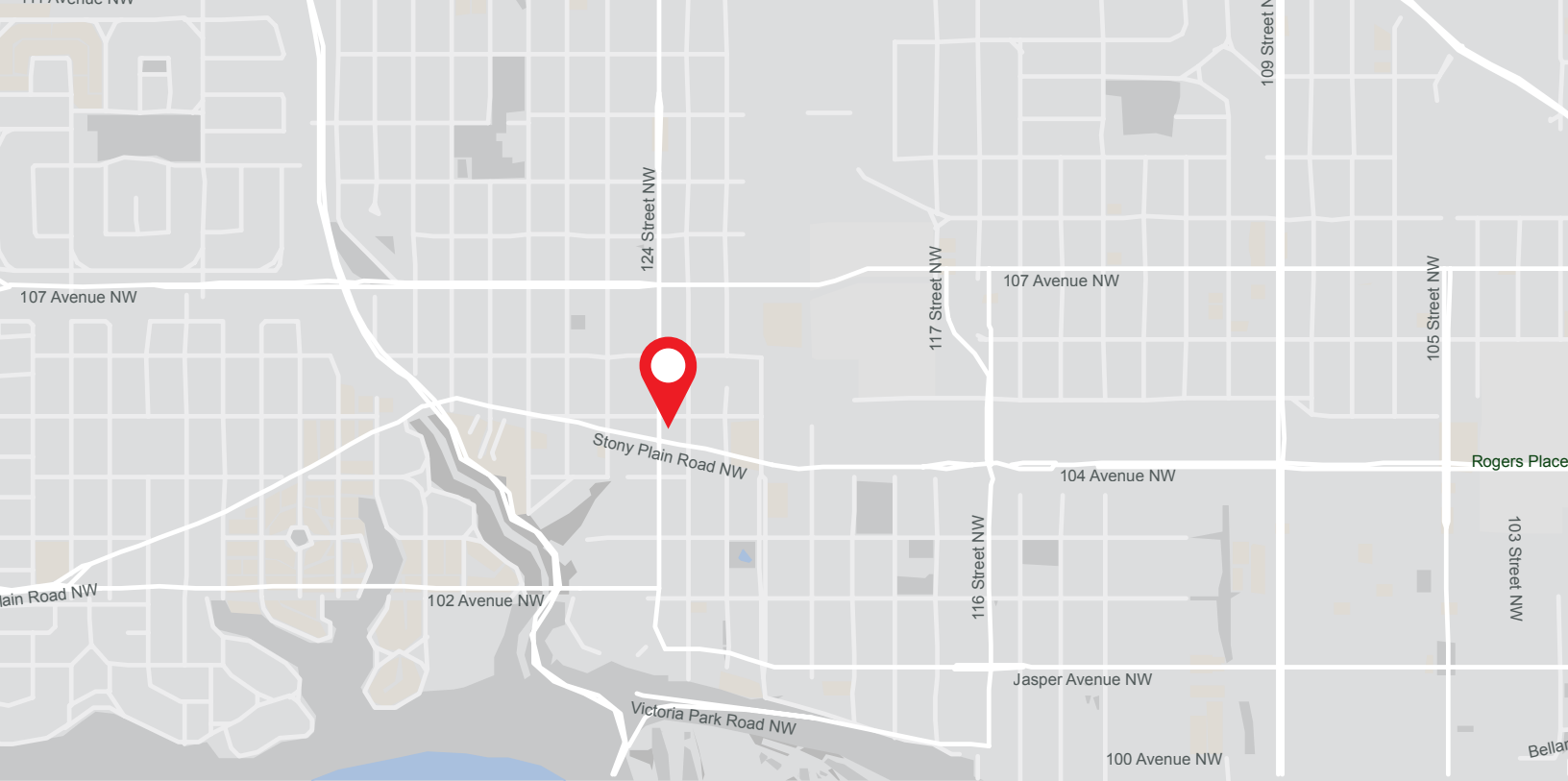
Chad.Boddez@am.jll.com

**JLL Edmonton Office**

780 328 2550

2101, 10088 102 Avenue NW  
Edmonton, Alberta T5J 2Z1



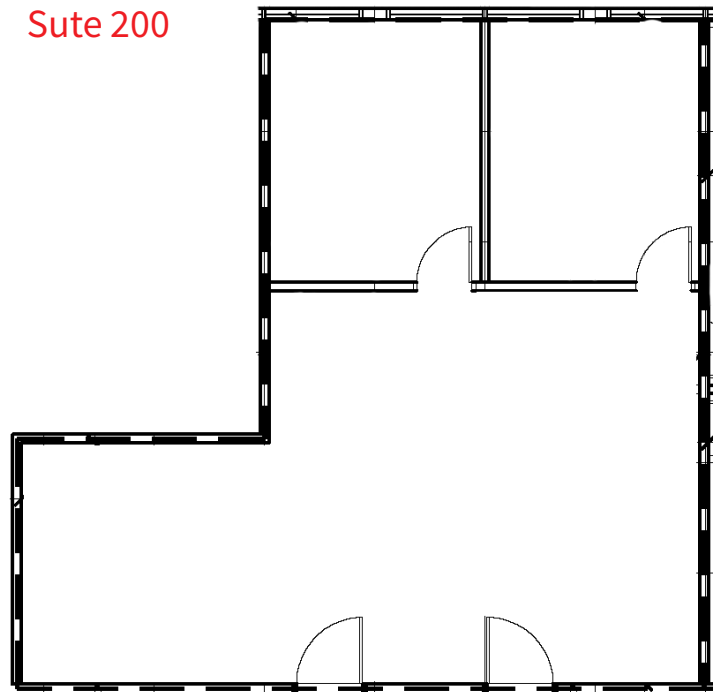


## Property Details

<b>Unit</b>	200	206
<b>Leasable Area</b>	731 SF	1,309 SF
<b>Lease Rate</b>	\$12.00	
<b>Op. Costs</b>	\$17.31	
<b>Parking</b>	1 surface stall \$90.00 per month	

## Floor Plan

### Sute 200



DISCLAIMER: Although information has been obtained from sources deemed reliable, neither Owner nor JLL makes any guarantees, warranties or representations, express or implied, as to the completeness or accuracy as to the information contained herein. Any projections, opinions, assumptions or estimates used are for example only. There may be differences between projected and actual results, and those differences may be material. The Property may be withdrawn without notice. Neither Owner nor JLL accepts any liability for any loss or damage suffered by any party resulting from reliance on this information. If the recipient of this information has signed a confidentiality agreement regarding this matter, this information is subject to the terms of that agreement. ©2022. Jones Lang LaSalle IP, Inc. All rights reserved.

