

OFFICE FOR LEASE

1150 Waverley Street

Highly Desirable Suburban Space

Ryan Munt

Senior Vice President

Ryan Munt Personal Real Estate Corporation

T 204 928 5015

C 204 298 1905

ryan.munt@cwstevenson.ca

Shae Halpin

Associate

T 204 560 2536

C 204 558 6071

shae.halpin@cwstevenson.ca



**CUSHMAN &
WAKEFIELD**
Winnipeg



Stevenson

OFFICE FOR LEASE

1150 Waverley Street

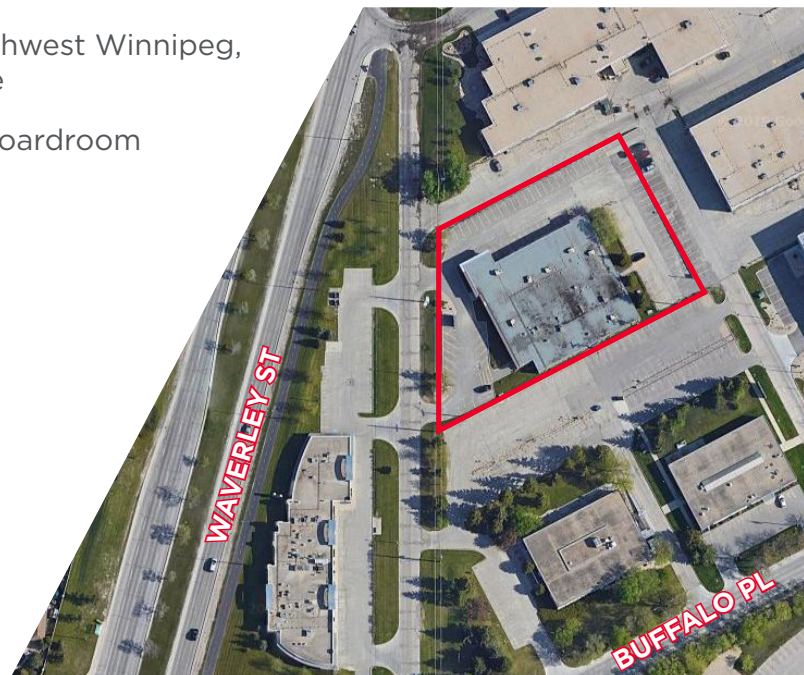


(+/-) 5,138 sf Available

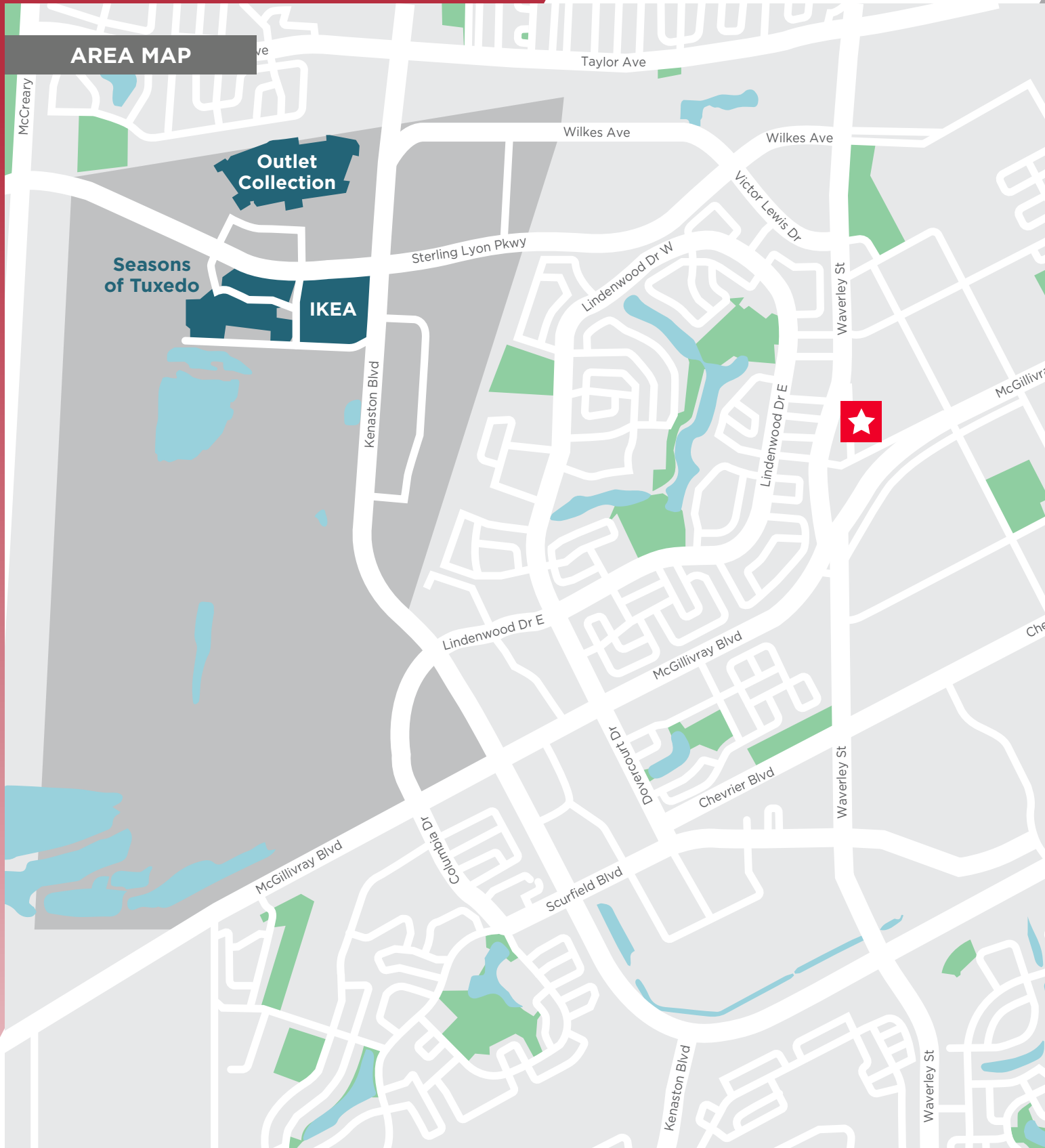
PROPERTY HIGHLIGHTS

- Highly desirable suburban office located in Southwest Winnipeg, accessible via Waverley Street and Buffalo Place
- Nicely built-out office space, with kitchenette, boardroom and 12 private offices
- Ample on-site parking
- Move in ready
- Close to many amenities

Lease Rate: \$16.00 psf Net
CAM & Tax: \$8.31psf (2023 est.)
Incl. Utilities, + 5% Management Fee



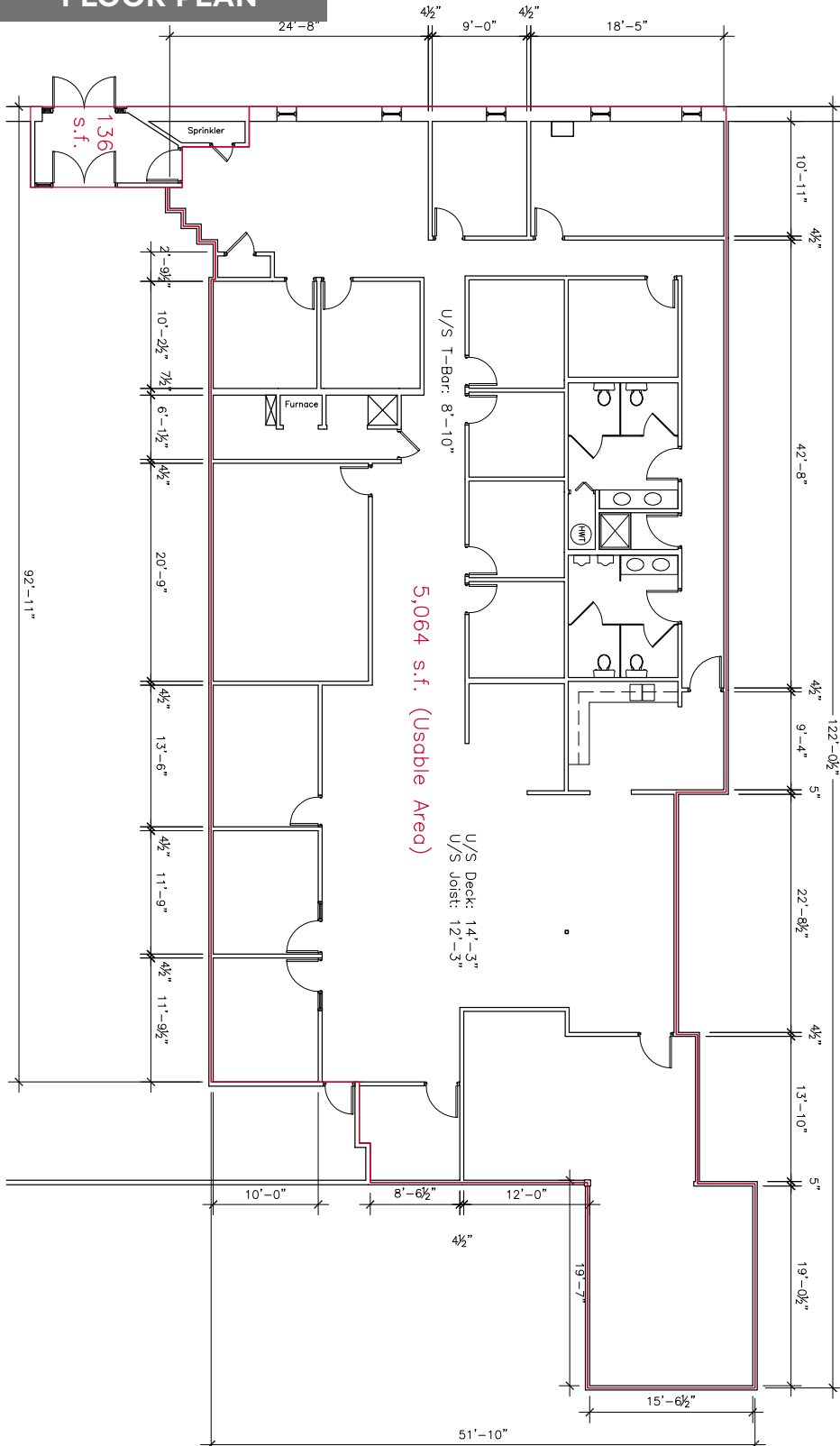
OFFICE FOR LEASE 1150 Waverley Street



OFFICE FOR LEASE

1150 Waverley Street

FLOOR PLAN



OFFICE FOR LEASE 1150 Waverley Street



Independently Owned and Operated / A Member of the Cushman & Wakefield Alliance ©2021 Cushman & Wakefield. All rights reserved. The information contained in this communication is strictly confidential. This information has been obtained from sources believed to be reliable but has not been verified. NO WARRANTY OR REPRESENTATION, EXPRESS OR IMPLIED, IS MADE AS TO THE CONDITION OF THE PROPERTY (OR PROPERTIES) REFERENCED HEREIN OR AS TO THE ACCURACY OR COMPLETENESS OF THE INFORMATION CONTAINED HEREIN, AND SAME IS SUBMITTED SUBJECT TO ERRORS, OMISSIONS, CHANGE OF PRICE, RENTAL OR OTHER CONDITIONS, WITHDRAWAL WITHOUT NOTICE, AND TO ANY SPECIAL LISTING CONDITIONS IMPOSED BY THE PROPERTY OWNER(S). ANY PROJECTIONS, OPINIONS OR ESTIMATES ARE SUBJECT TO UNCERTAINTY AND DO NOT SIGNIFY CURRENT OR FUTURE PROPERTY PERFORMANCE.

Ryan Munt
Senior Vice President

Ryan Munt Personal Real Estate Corporation
T 204 928 5015
C 204 298 1905
ryan.munt@cwstevenson.ca

Shae Halpin
Associate

T 204 560 2536
C 204 558 6071
shae.halpin@cwstevenson.ca

Independently Owned and Operated / A Member of the Cushman & Wakefield Alliance ©2023 Cushman & Wakefield. All rights reserved.
The information contained in this communication is strictly confidential.

This information has been obtained from sources believed to be reliable but has not been verified. NO WARRANTY OR REPRESENTATION, EXPRESS OR IMPLIED, IS MADE AS TO THE CONDITION OF THE PROPERTY (OR PROPERTIES) REFERENCED HEREIN OR AS TO THE ACCURACY OR COMPLETENESS OF THE INFORMATION CONTAINED HEREIN, AND SAME IS SUBMITTED SUBJECT TO ERRORS, OMISSIONS, CHANGE OF PRICE, RENTAL OR OTHER CONDITIONS, WITHDRAWAL WITHOUT NOTICE, AND TO ANY SPECIAL LISTING CONDITIONS IMPOSED BY THE PROPERTY OWNER(S). ANY PROJECTIONS, OPINIONS OR ESTIMATES ARE SUBJECT TO UNCERTAINTY AND DO NOT SIGNIFY CURRENT OR FUTURE PROPERTY PERFORMANCE.

