



CBRE



**OFFICE BUILDING
FOR LEASE**

**9403 - 17 Avenue
Edmonton, AB**

LOCATED IN THE EDMONTON RESEARCH PARK

GROSS RATES

Nicely situated single storey building with office and warehouse

1 office, reception/waiting area, kitchen, storage, conference/
meeting room, washrooms, shower and lab space

Furniture available

Quick access to the amenities of South Edmonton Common

Flexible demising options available

CONTACT US

MARK ANDERSON *Associate Vice President*

780.229.4652 | mark.anderson2@cbre.com

SARAH HENDERSON *Sales Representative*

780.917.4636 | sarah.henderson@cbre.com

JEREMY DEEKS *Associate Vice President*

780.229.4651 | jeremy.deeks@cbre.com

AL MENON *Senior Vice President*

780.917.4638 | al.menon@cbre.com

www.cbre.ca/edmonton



CBRE





PROPERTY DETAILS

Availability	Flexible demising options: 1,500 - 5,000 sq. ft. Potential for warehouse availability
Parking	Up to 25+ energized stalls
Lot Size	2.25 acres
Zoning	IB - Business Industrial
Lease Rate	(GROSS) \$29.00 / sq. ft. + utilities



The Edmonton Research Park (ERP) is home to more than 1,500 members at 55+ companies working in diverse fields, from biotechnology to energy.

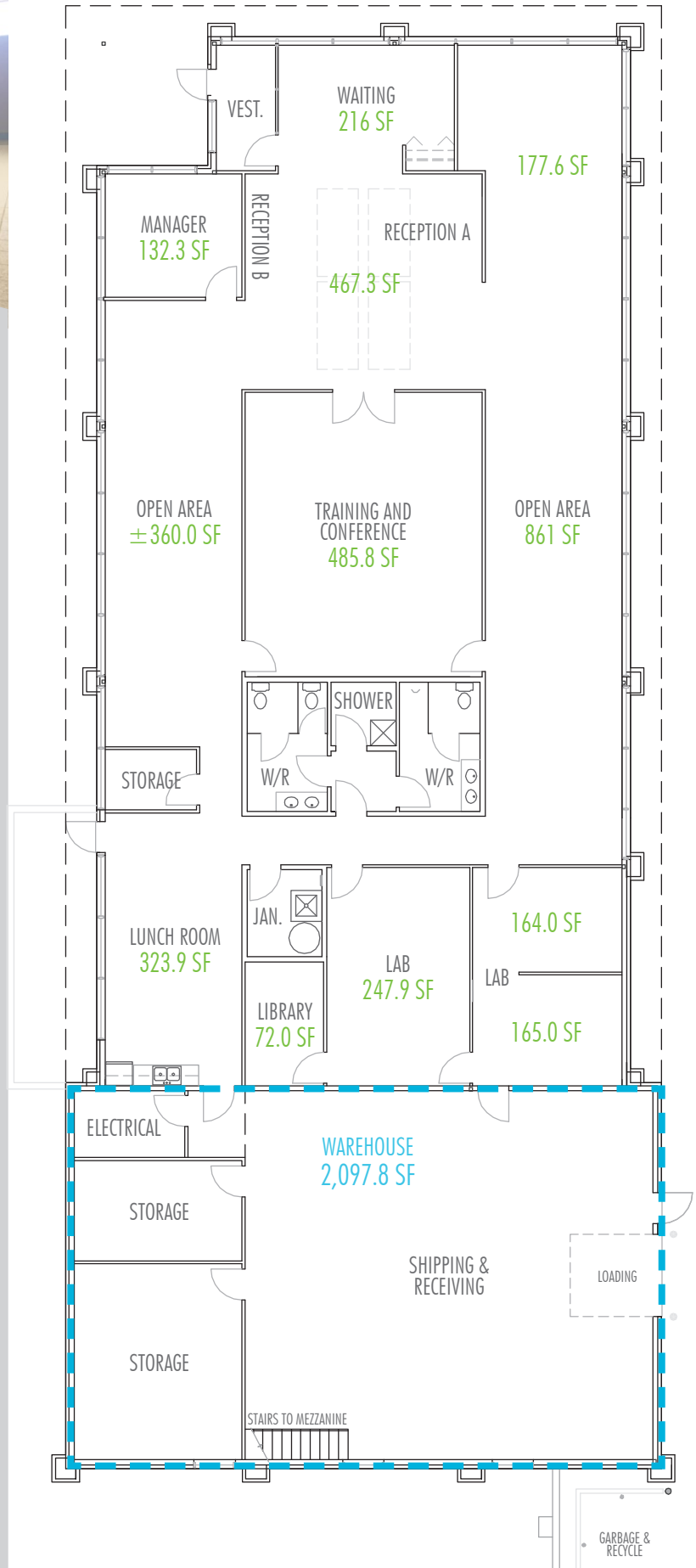
Startups and growing companies can access a variety of workspaces; on-site programs, access to soft-landing programs; personalized referrals to support and funding agencies; and facilitated access and collaboration with local, national and international communities of accelerators, science parks and incubators.

Tenants include:

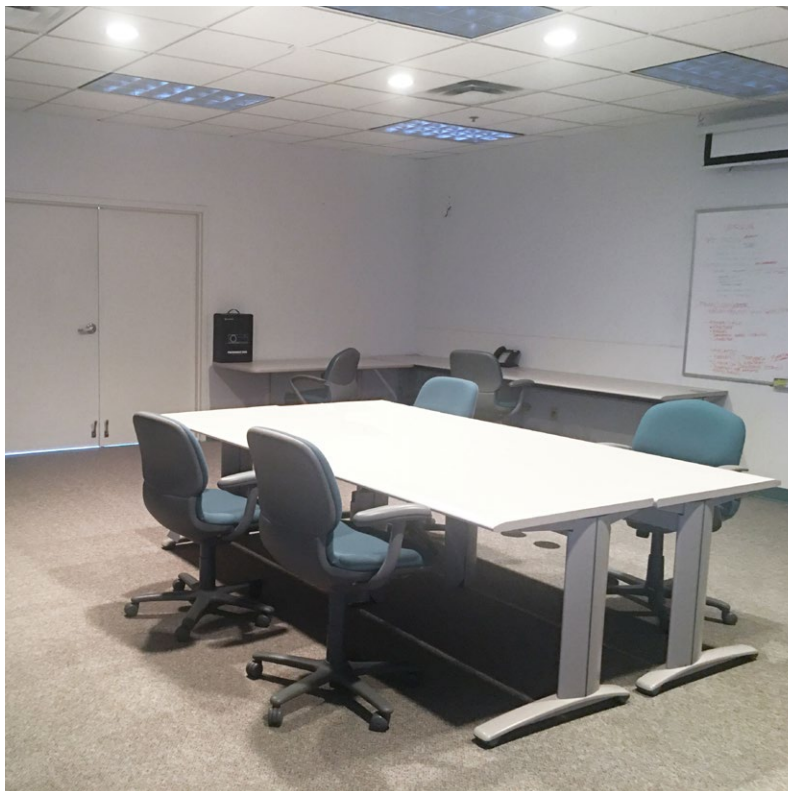
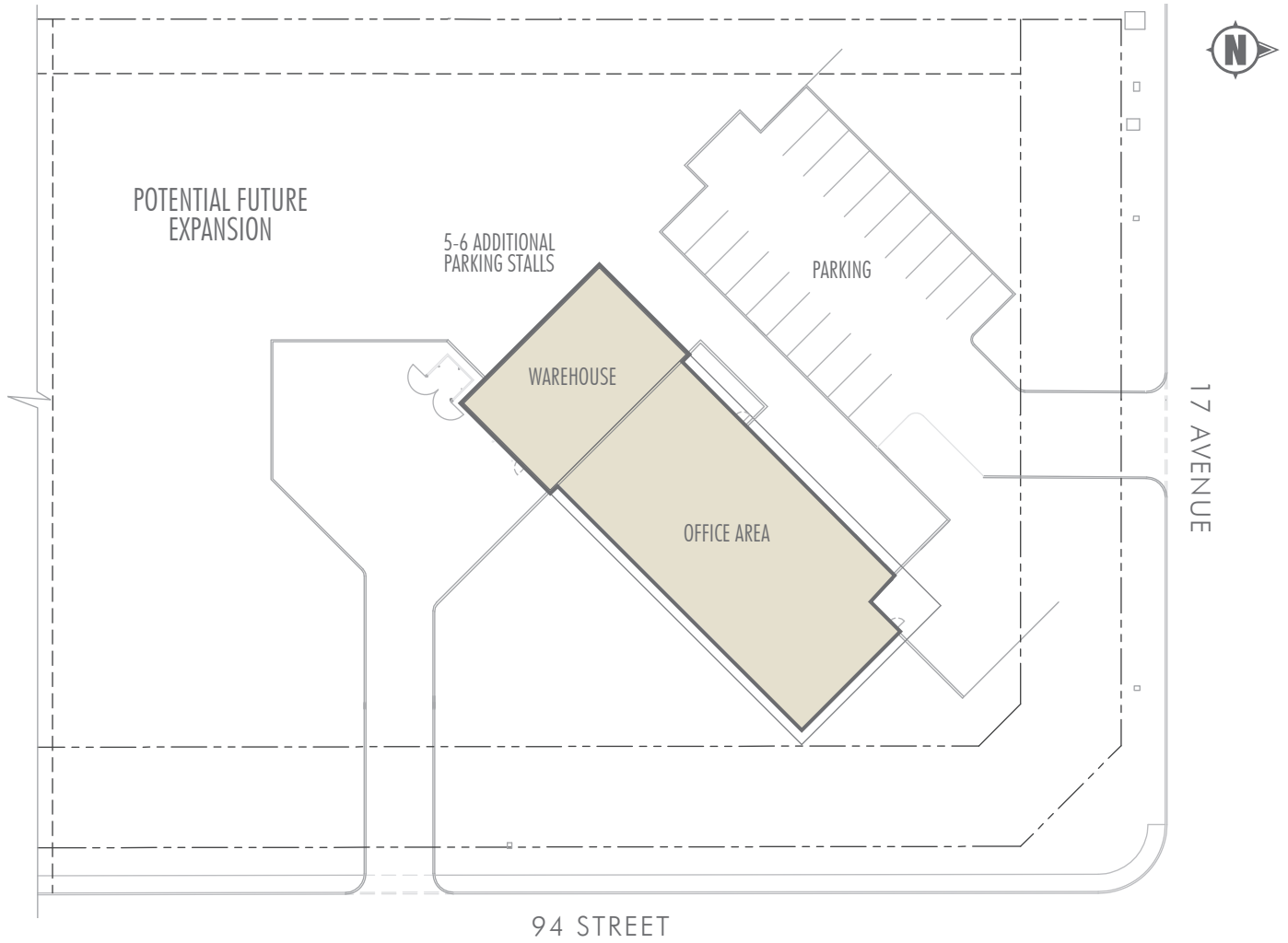
- Advanced Technology Centre
- InnoTech Alberta (Alberta Innovates)
- Syncrude Canada Research
- LogiCan Technologies
- ALS Environmental
- Syncad Construction Corp
- Chandos Construction

Source: edmontonresearchpark.com

MULTIPLE DEMISING OPTIONS



SITE PLAN



OFFICE BUILDING FOR LEASE

9403 - 17 Ave, Edmonton, AB



CONTACT US

MARK ANDERSON Associate Vice President

780.229.4652 | mark.anderson2@cbre.com

SARAH HENDERSON Sales Representative

780.917.4636 | sarah.henderson@cbre.com

JEREMY DEEKS Associate Vice President

780.229.4651 | jeremy.deeks@cbre.com

AL MENON Senior Vice President

780.917.4638 | al.menon@cbre.com

This disclaimer shall apply to CBRE Limited, Real Estate Brokerage, and to all other divisions of the Corporation; to include all employees and independent contractors ("CBRE"). The information set out herein, including, without limitation, any projections, images, opinions, assumptions and estimates obtained from third parties (the "Information") has not been verified by CBRE, and CBRE does not represent, warrant or guarantee the accuracy, correctness and completeness of the Information. CBRE does not accept or assume any responsibility or liability, direct or consequential, for the Information or the recipient's reliance upon the Information. The recipient of the Information should take such steps as the recipient may deem necessary to verify the Information prior to placing any reliance upon the Information. The Information may change and any property described in the Information may be withdrawn from the market at any time without notice or obligation to the recipient from CBRE. CBRE and the CBRE logo are the service marks of CBRE Limited and/or its affiliated or related companies in other countries. All other marks displayed on this document are the property of their respective owners. All Rights Reserved.

www.cbre.ca/edmonton

CBRE