

6125 12 Street SE, Unit 2

Calgary, Alberta

Blake Ellis

Associate Vice President
+1 403 750 0519
blake.ellis@cbre.com

Cameron Woods

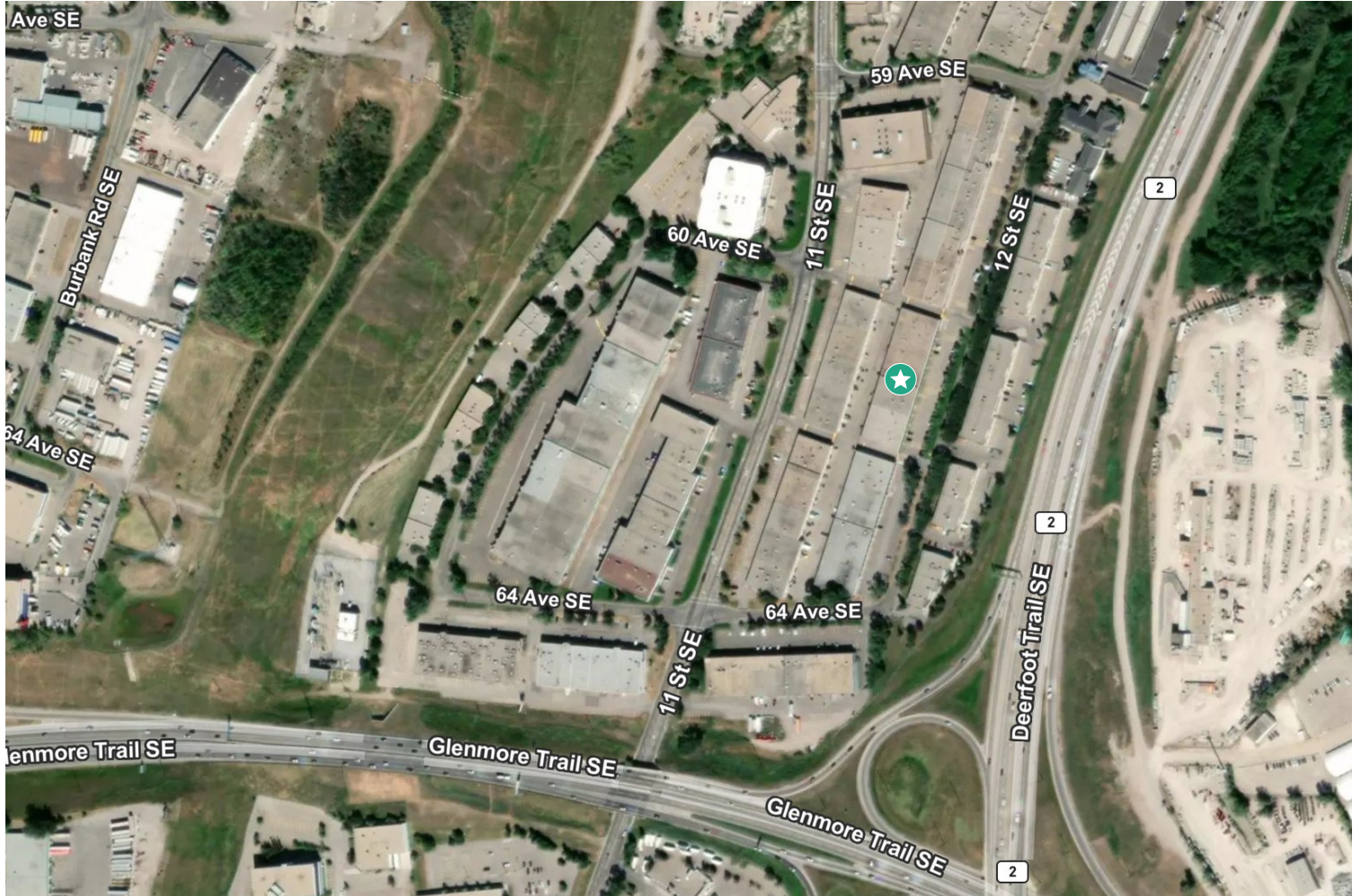
Associate Vice President
+1 403 303 4562
cameron.woods@cbre.com

2,943 SF Office & Warehouse Unit



6125 12 Street SE, Unit 2

Calgary, Alberta | T2H 2K1



Rentable Area	Office:	±1,500 SF
	Warehouse:	±1,443 SF
	Total Rentable Area:	2,943 SF

Zoning I-G (Industrial-General)

Loading 1 x Drive-in

Ceiling Height 14'

Operating Costs \$7.05 PSF

Lease Rate \$13.00 PSF

Availability Immediately

I-G

Zoning

\$7.05

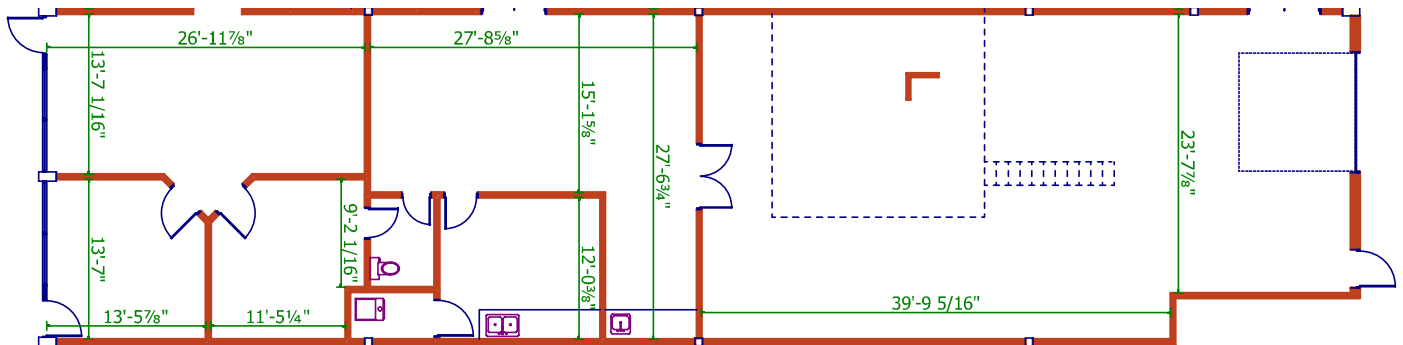
Operating Costs (PSF)

\$13.00

Lease Rate (PSF)

Property Highlights

- + Office layout to be reworked to accommodate tenant requirement
- + Existing lab infrastructure
- + Landlord to upgrade warehouse lighting to LED
- + Located minutes from Deerfoot Meadows Shopping Centre which offers a wide variety of employee and customer amenities
- + Ample, double row surface parking available
- + Close proximity to Glenmore Trail and Deerfoot Trail SE



Rentable Area Breakdown

±1,500

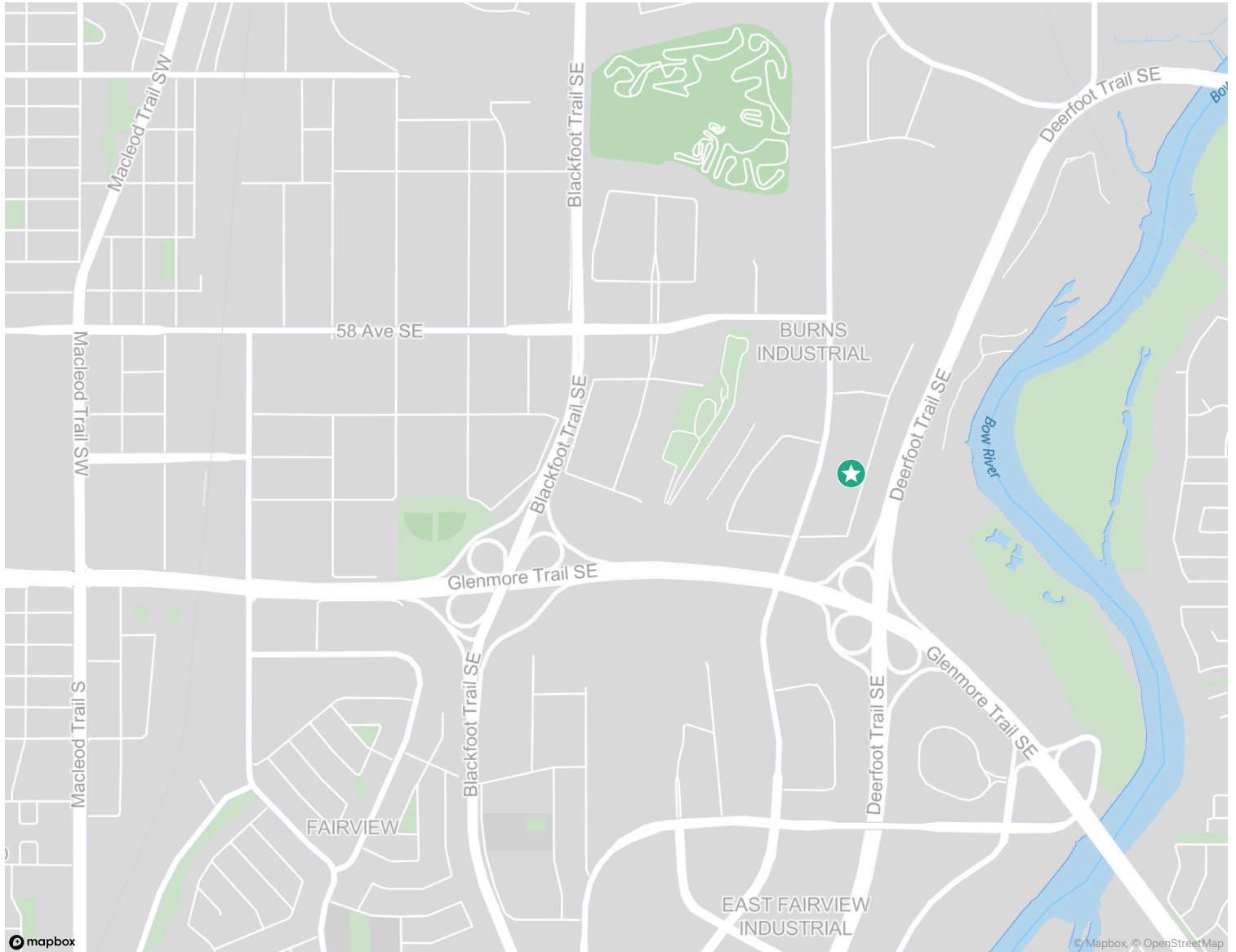
Office/Showroom (SF)

±1,443

Warehouse (SF)

2,943

Total Rentable Area (SF)



Contact Us

Blake Ellis

Associate Vice President
+1 403 750 0519

blake.ellis@cbre.com

*Lead Broker

Cameron Woods

Associate Vice President
+1 403 303 4562

cameron.woods@cbre.com

*Lead Broker

Iain Ferguson

Vice Chairman
+1 403 750 0803

iain.ferguson@cbre.com

Luke Hamill

Senior Vice President
+1 403 294 5707

luke.hamill@cbre.com

Evan Renwick

Associate Vice President
+1 403 750 0807

evan.renwick@cbre.com

This disclaimer shall apply to CBRE Limited, and to all divisions of the Corporation (“CBRE”).The information set out herein (the “Information”) has not been verified by CBRE, and CBRE does not represent, warrant or guarantee the accuracy, correctness and completeness of the Information. CBRE does not accept or assume any responsibility or liability, direct or consequential, for the Information or the recipient’s reliance upon the Information. The recipient of the Information should take such steps as the recipient may deem necessary to verify the Information prior to placing any reliance upon the Information. The Information may change and any property described in the Information may be withdrawn from the market at any time without notice or obligation to the recipient from CBRE.

Mapping Sources: Canadian Mapping Services canadamapping@cbre.com; DMTI Spatial, Environics Analytics, Microsoft Bing, Google Earth.