



1560-1580 | **MERIVALE ROAD**
OTTAWA, ONTARIO

OFFICE SPACE FOR LEASE

1,122 sq.ft. - 1,162 sq.ft.
Available immediately

Scott Craven

Director of Leasing, Real Estate Sales Representative
Colonnade BridgePort Realty Inc., Brokerage

scraven@colonnadebridgeport.ca
613.225.8118 x328

Highlights



Accessible via a variety of OC Transpo service routes on Merivale Road and Meadowlands Drive.



Accessible via Merivale Road and Meadowlands Drive
Minutes to HWY. 417 via Merivale Road/Maitland Avenue



Many retailers on-site and easy access to a variety of restaurants, retailers and services along Merivale Road.



Five storey building known as the Merivale Professional Centre

Fifteen minutes to the Ottawa International Airport

Opportunity

Suite 205 - 1,122 sq.ft.
Suite 302 - 1,162 sq.ft.

Lease Details

Rental Rate: \$13.00-\$15.00/sq.ft.
Taxes & Operating: \$16.47/sq.ft.

Available: Immediately

*Rental rates and additional rents are based on 2019 estimates and are subject to change at any time.



CONTACT

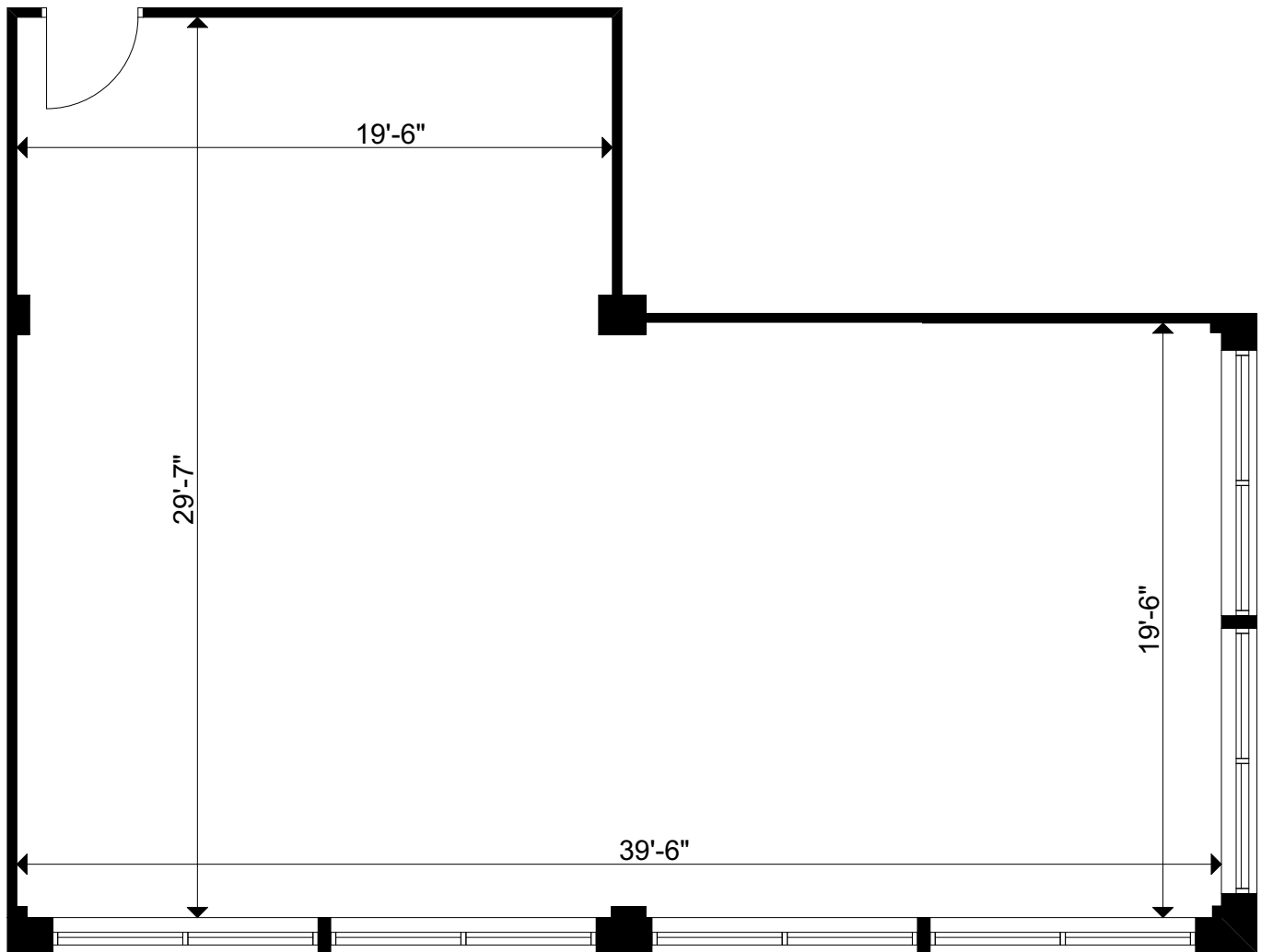
Scott Craven

Director of Leasing, Real Estate Sales Representative
Colonnade BridgePort Realty Inc., Brokerage

scraven@colonnadebridgeport.ca
613.225.8118 x328

Available Space

Suite 205 - 1,122 sq.ft.



CONTACT

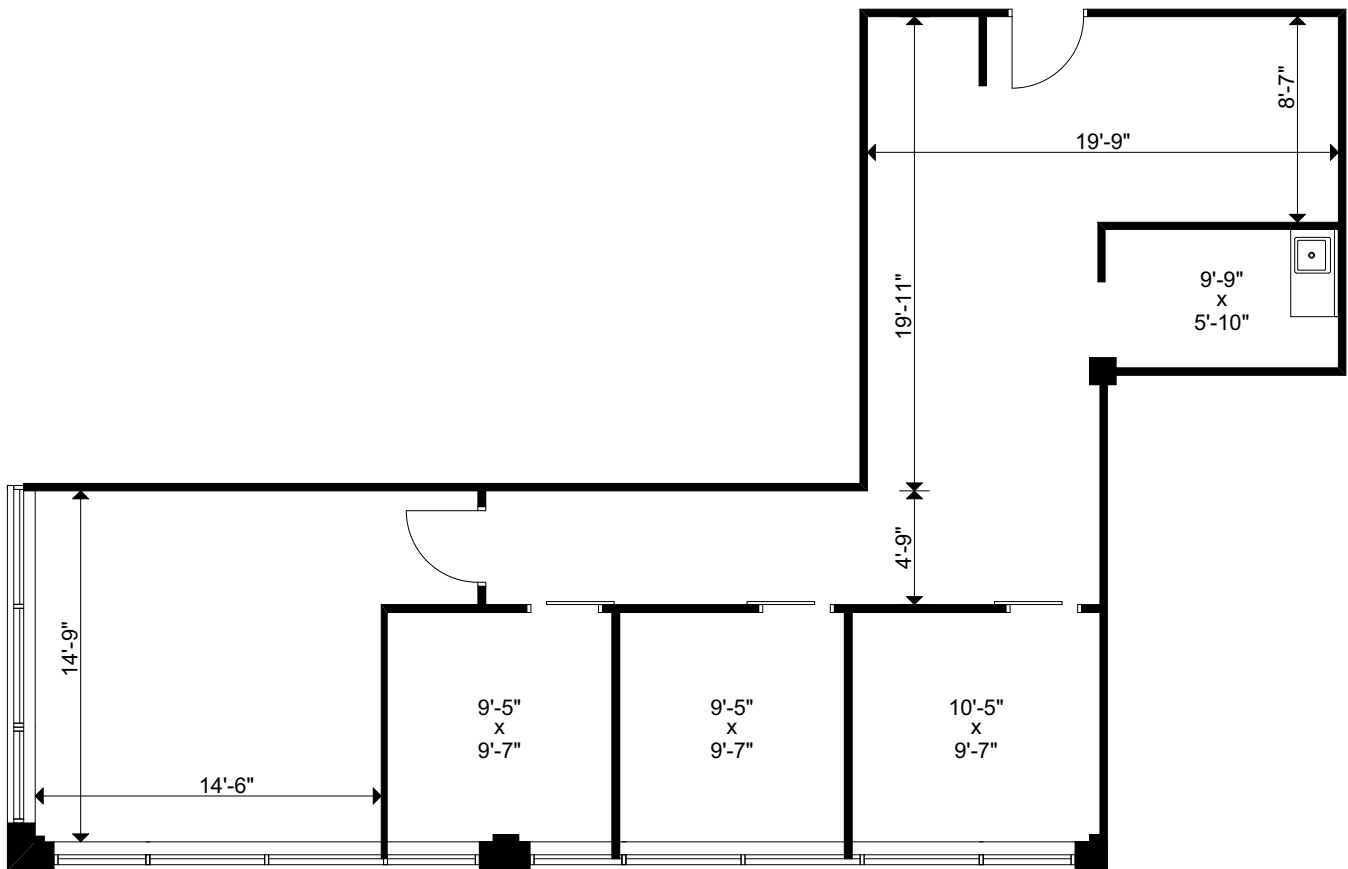
Scott Craven

Director of Leasing, Real Estate Sales Representative
Colonnade BridgePort Realty Inc., Brokerage

scraven@colonnadebridgeport.ca
613.225.8118 x328

Available Space

Suite 302 - 1,162 sq.ft.



CONTACT

Scott Craven

Director of Leasing, Real Estate Sales Representative
Colonnade BridgePort Realty Inc., Brokerage

scraven@colonnadebridgeport.ca
613.225.8118 x328