

OFFICE SPACE  
FOR LEASE

# 240

## CATHERINE STREET

Ottawa, Ontario

1,978 SF - 6,682 SF



**PAUL MILLER**  
Real Estate Sales Representative  
Colonnade BridgePort Realty Inc., Brokerage

343-633-5161 x394

 **COLONNADE  
BRIDGEPORT**  
Realty Inc., Brokerage

# 240 CATHERINE STREET

Ottawa, Ontario

## LEASE DETAILS

**Rental Rate:** \$15-\$18.00 / SF

**Taxes & Operating:** \$15.82 / SF

Operating costs, tax estimates and rental ranges are based on 2025 figures and are subject to change.

## OPPORTUNITY

**Suite 205 - 2,212 sq.ft.**

**Suite 206 - 1,978 sq.ft.**

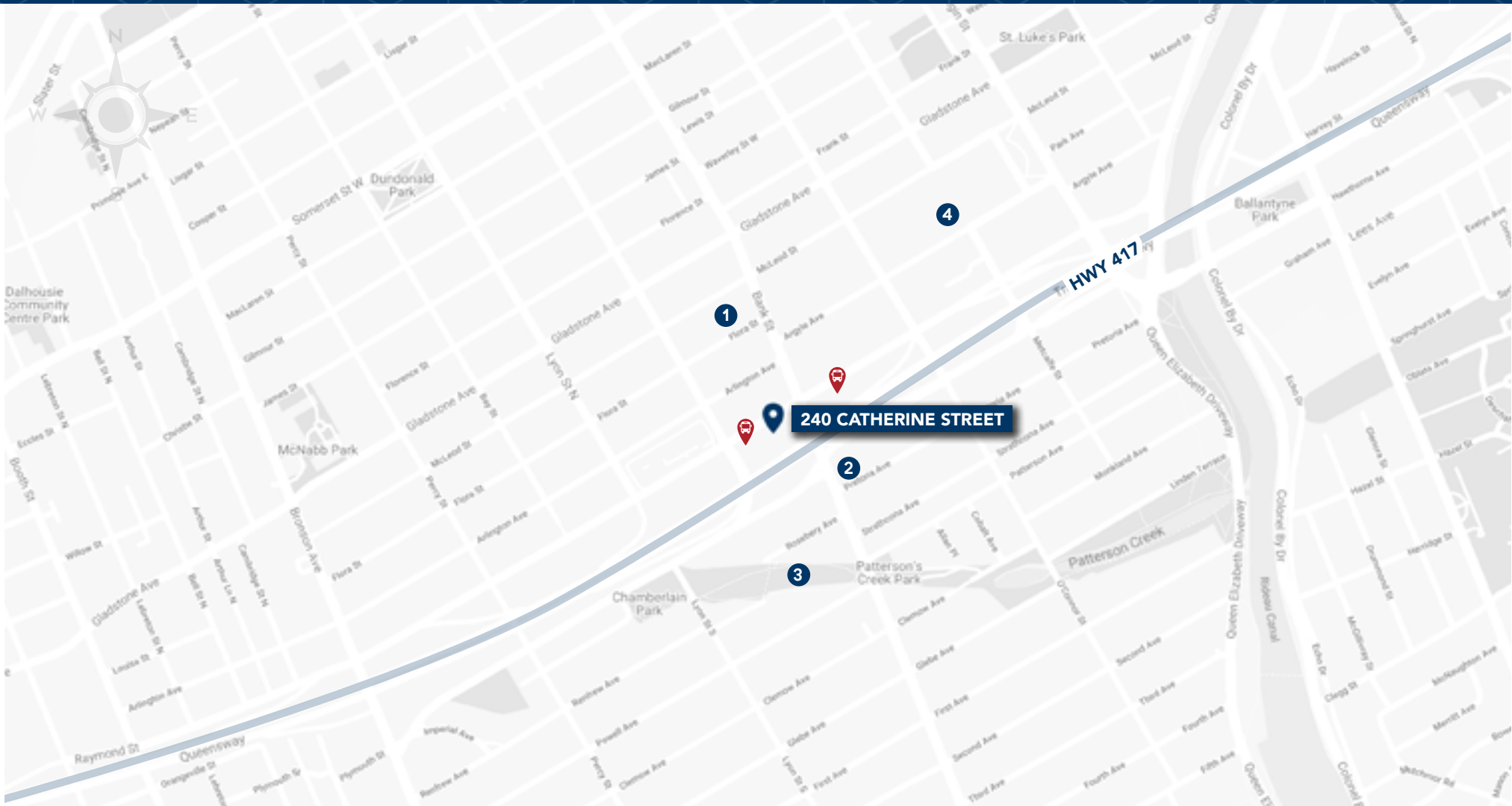
**Suite 305 - 6,682 sq.ft.**

## HIGHLIGHTS

- ✓ On-site parking available
- ✓ Exterior podium signage
- ✓ Building visible from Queensway
- ✓ Steps from Bank Street and Glebe restaurants and retailers
- ✓ Easy access to HWY 417
- ✓ Short drive from downtown Ottawa



# AREA MAP



- 1 Flora Hall Brewing
- 2 Clocktower Brew Pub Glebe
- 3 Central Park
- 4 Canadian Museum of Nature

## 240 CATHERINE STREET

Ottawa, Ontario

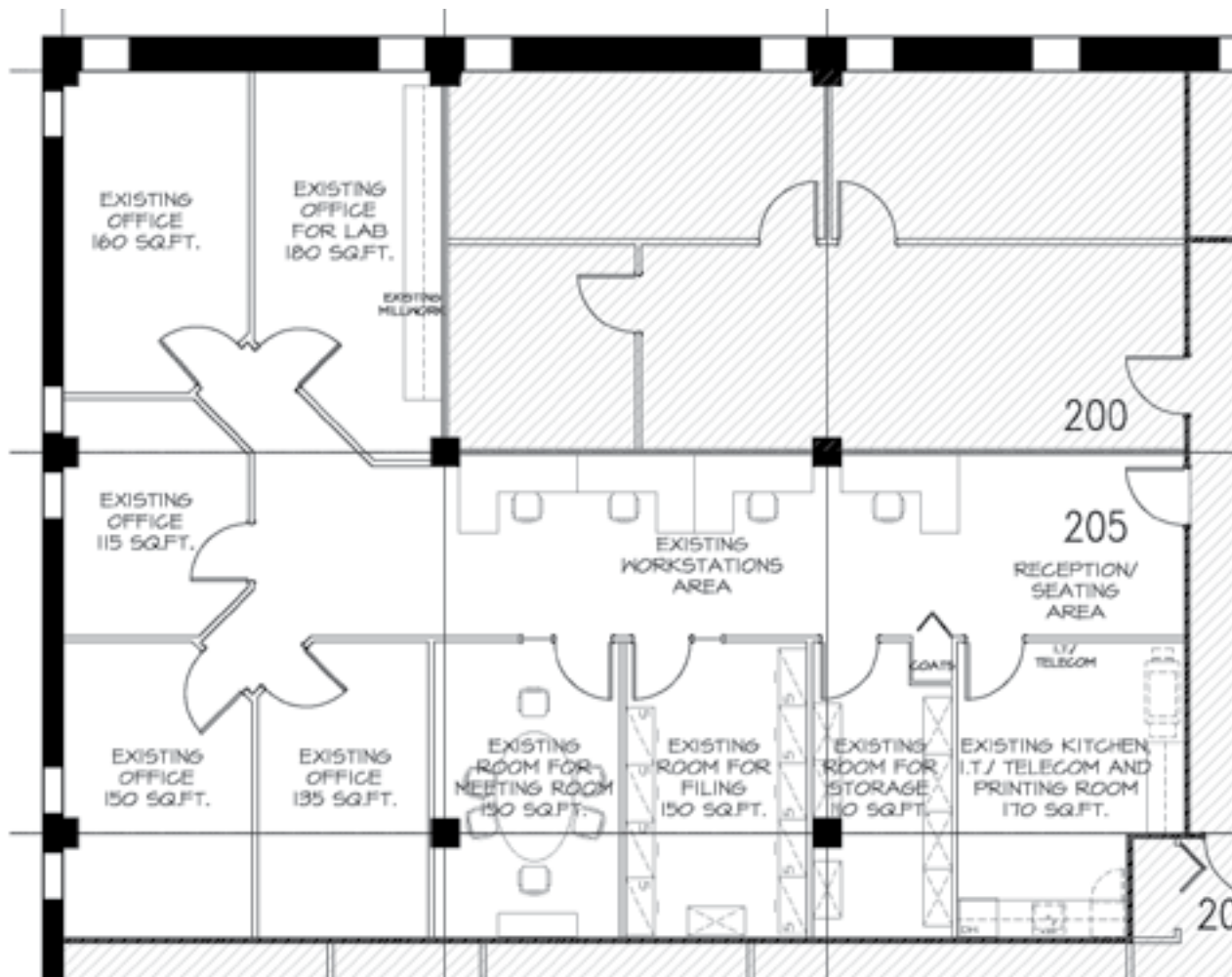


# 240 CATHERINE STREET

Ottawa, Ontario

## SUITE 205

2,212 SF

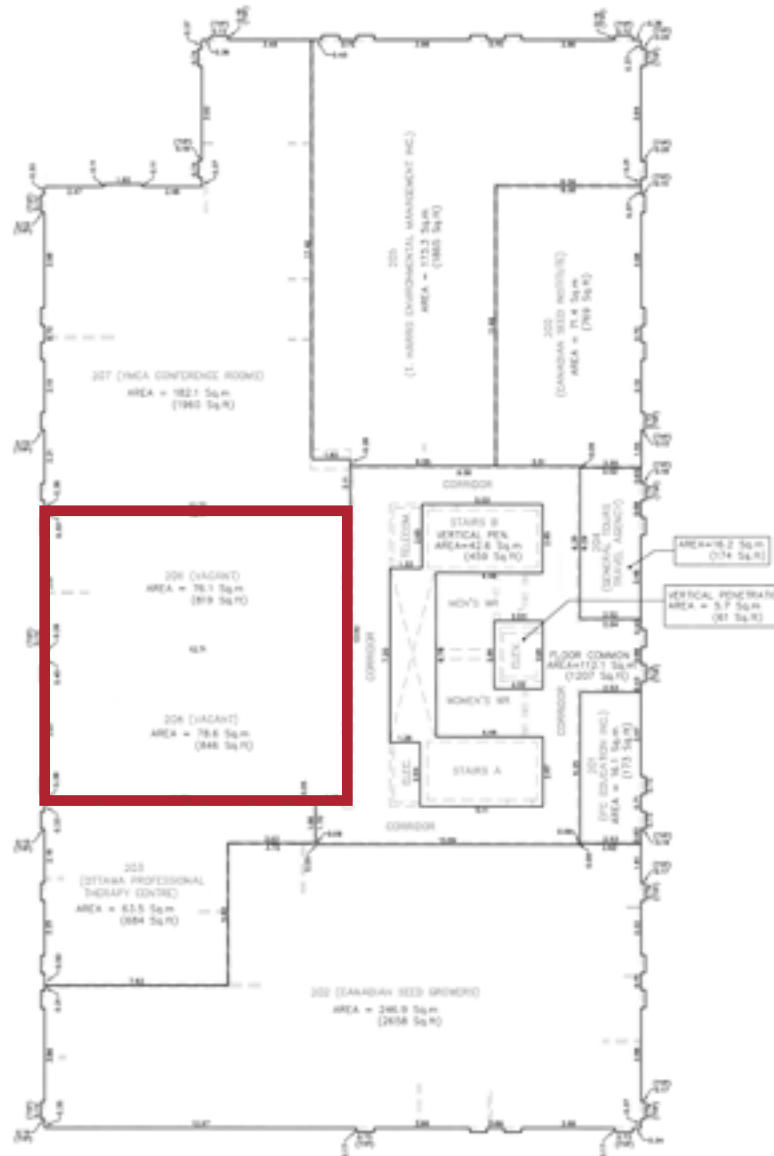


# 240 CATHERINE STREET

Ottawa, Ontario

## SUITE 206

1,978 SF



# 240 CATHERINE STREET

Ottawa, Ontario

## SUITE 305

6,682 SF

