

For Lease

220 Laurier Ave W

Ottawa, ON



Contact

Stephanie Lui*

Associate Vice President

613 323 7883

Stephanie.Lui@jll.com





127,000
Total SF



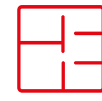
\$18.40
Additional Rent
(2024)



15
Floors



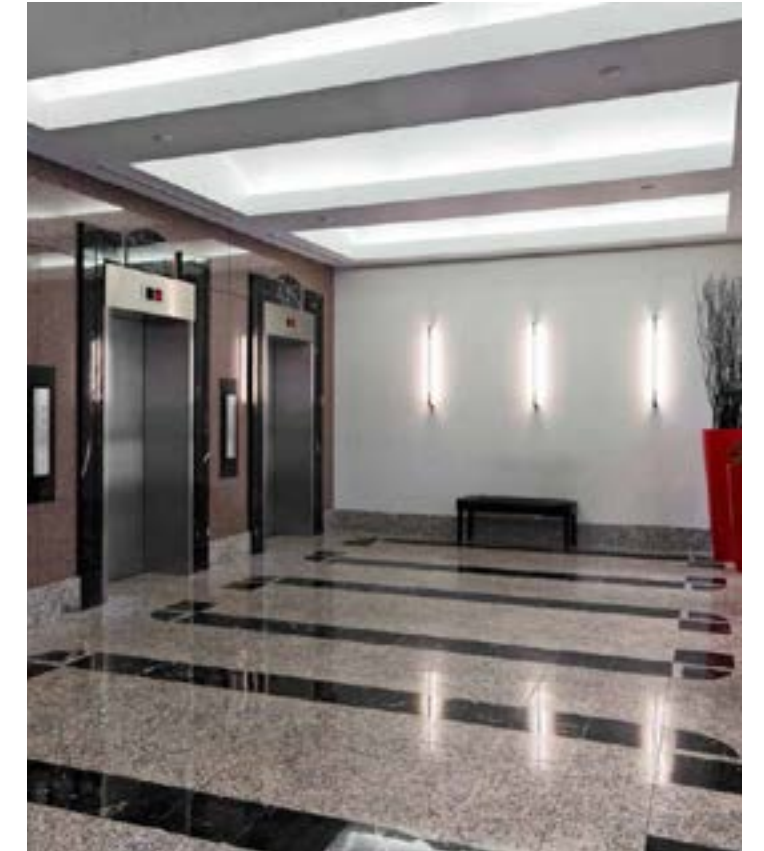
Certified
BOMA BEST



Open, efficient
and flexible
floor plates

Features

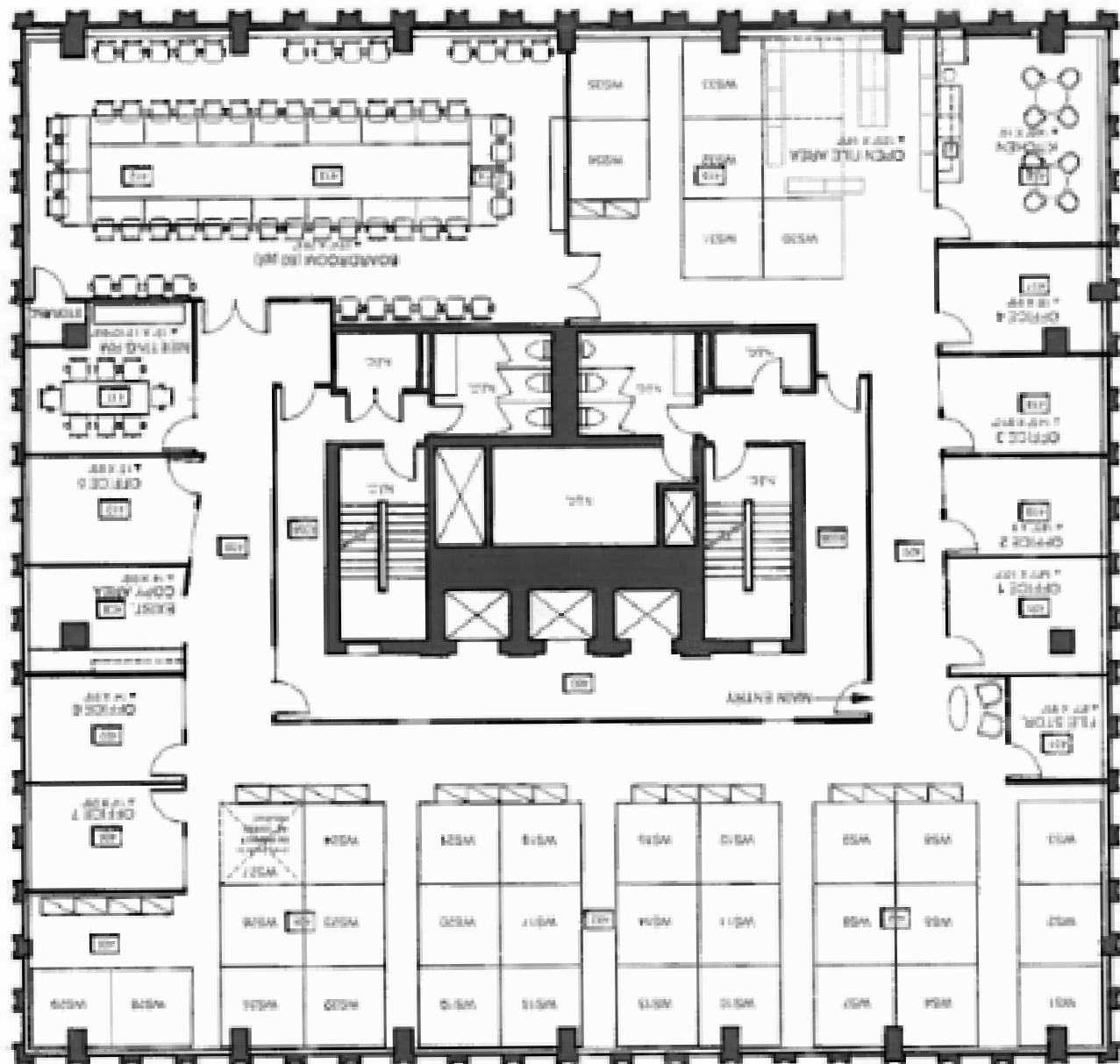
- Recently renovated lobby and elevator system
- Washroom upgrades (completed in 2019)
- 24-hour access card system
- On-site tenant exclusive conference centre
- Three levels of tenant exclusive underground parking with 1 EV charging station
- Secured bicycle racks in underground parking garage
- Private on-site shower facilities



4th Floor

Suite 400: 8,690 SF

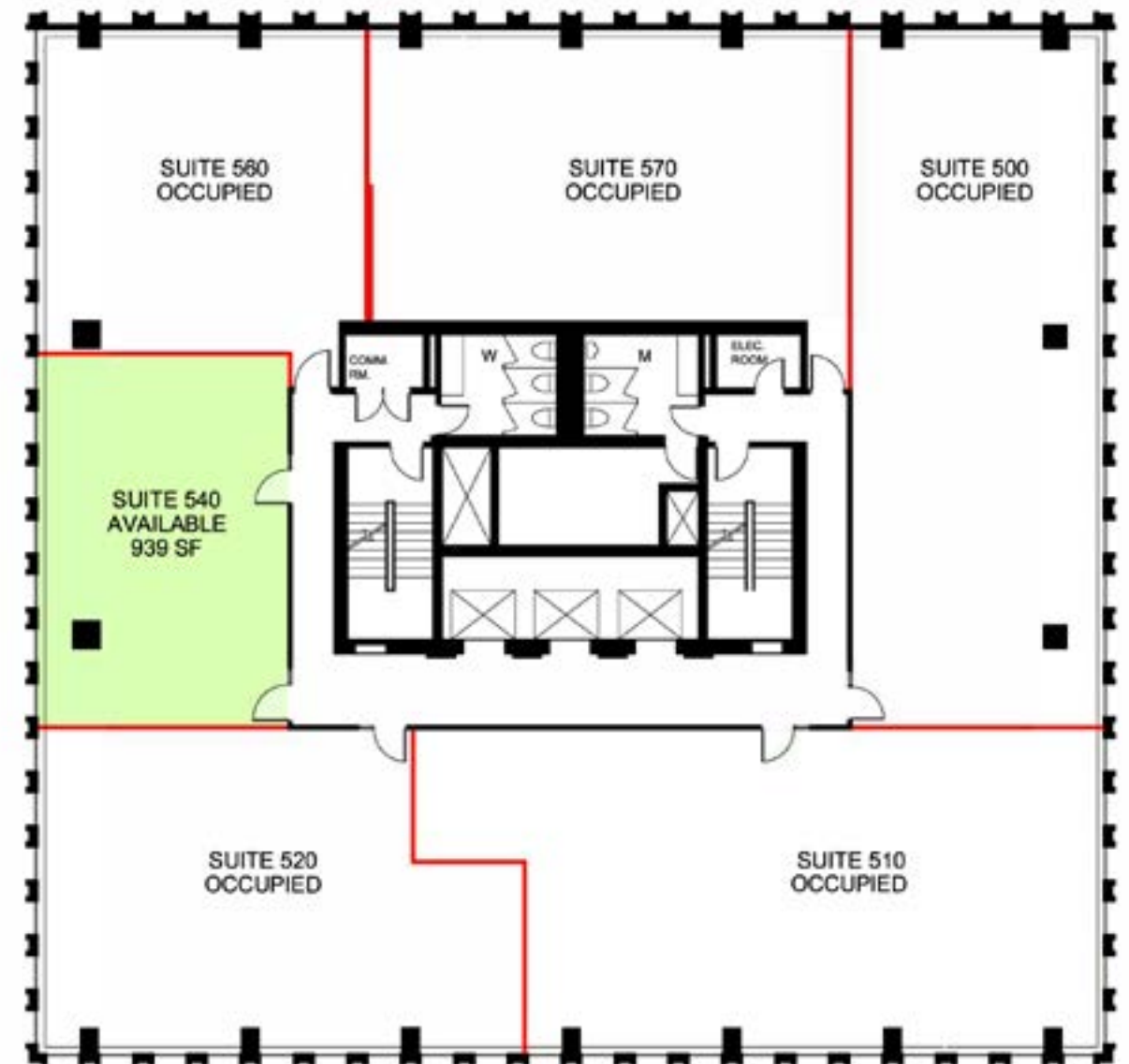
- Full floor opportunity, can be demised to 3,500 SF
- Mix of open and closed offices



5th Floor

Suite 540: 939 SF

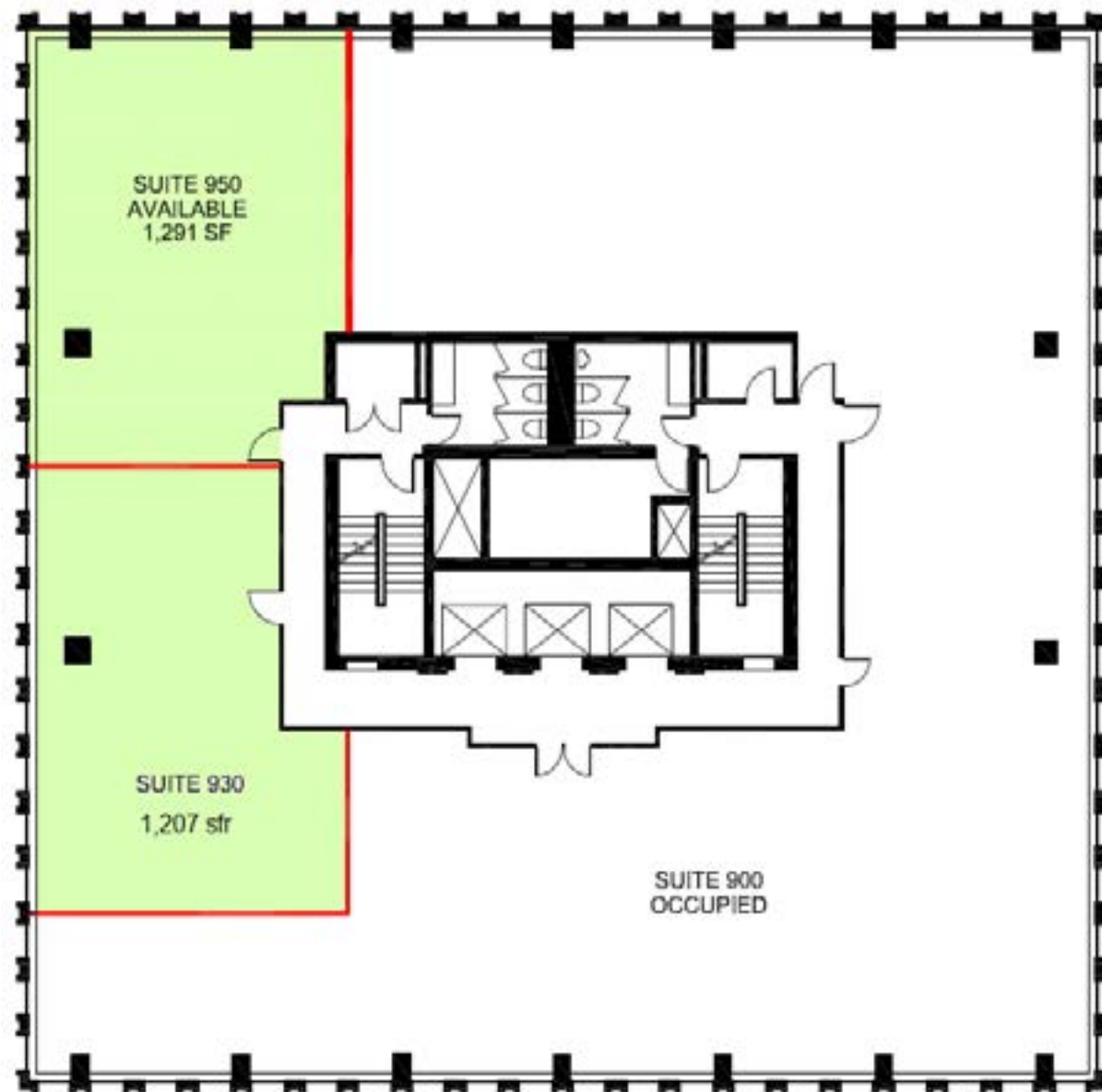
- Open concept space with kitchenette



9th Floor

Suite 930: 1,207 SF

- Fully built space with 4 offices, 1 meeting room, reception and kitchenette
- Contiguous with Suite 950 (2,498 sfr)

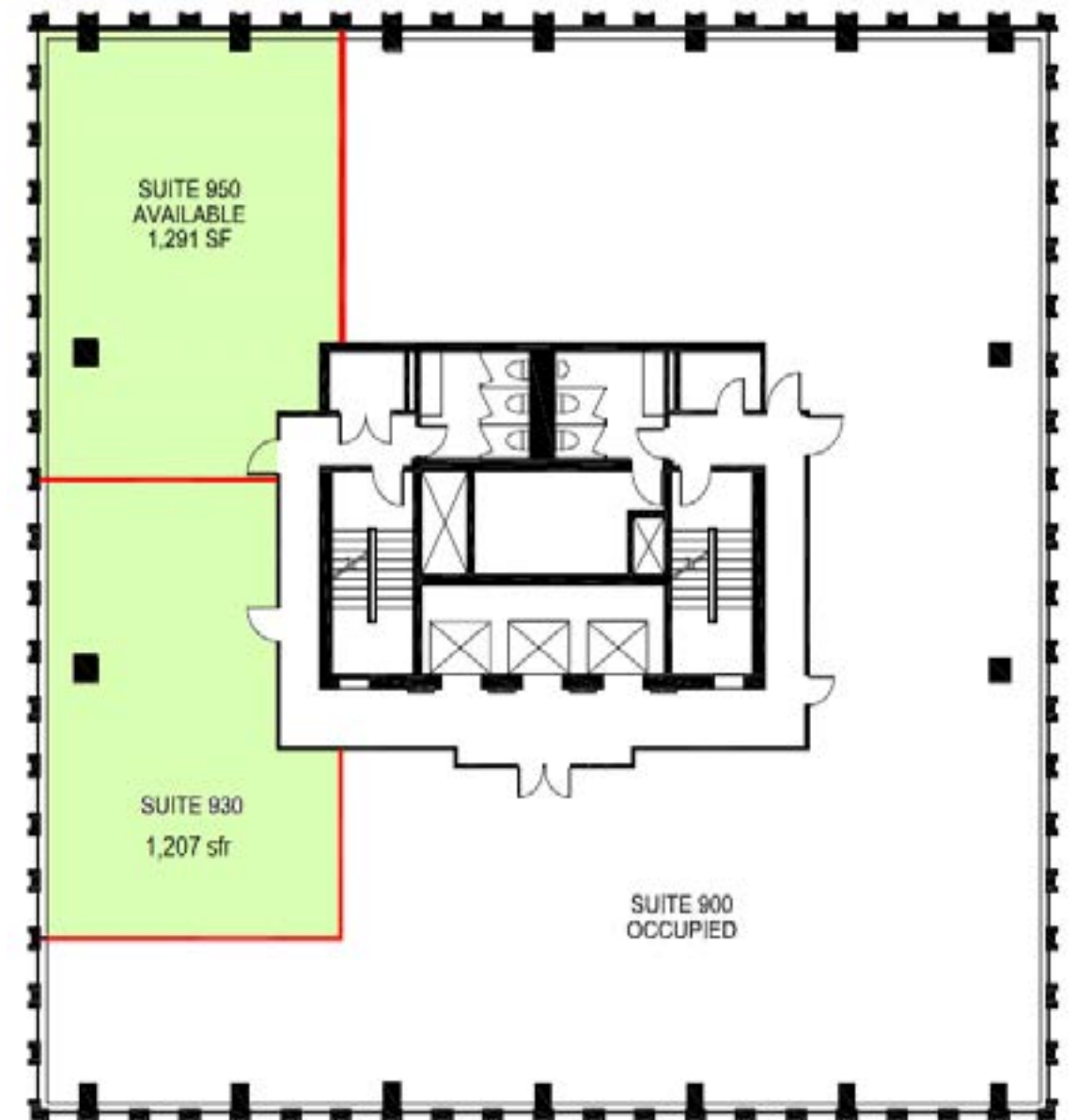


9th Floor

Suite 950: 1,291 SF

- Base building condition
- Contiguous with Suite 930 (2,498 sfr)

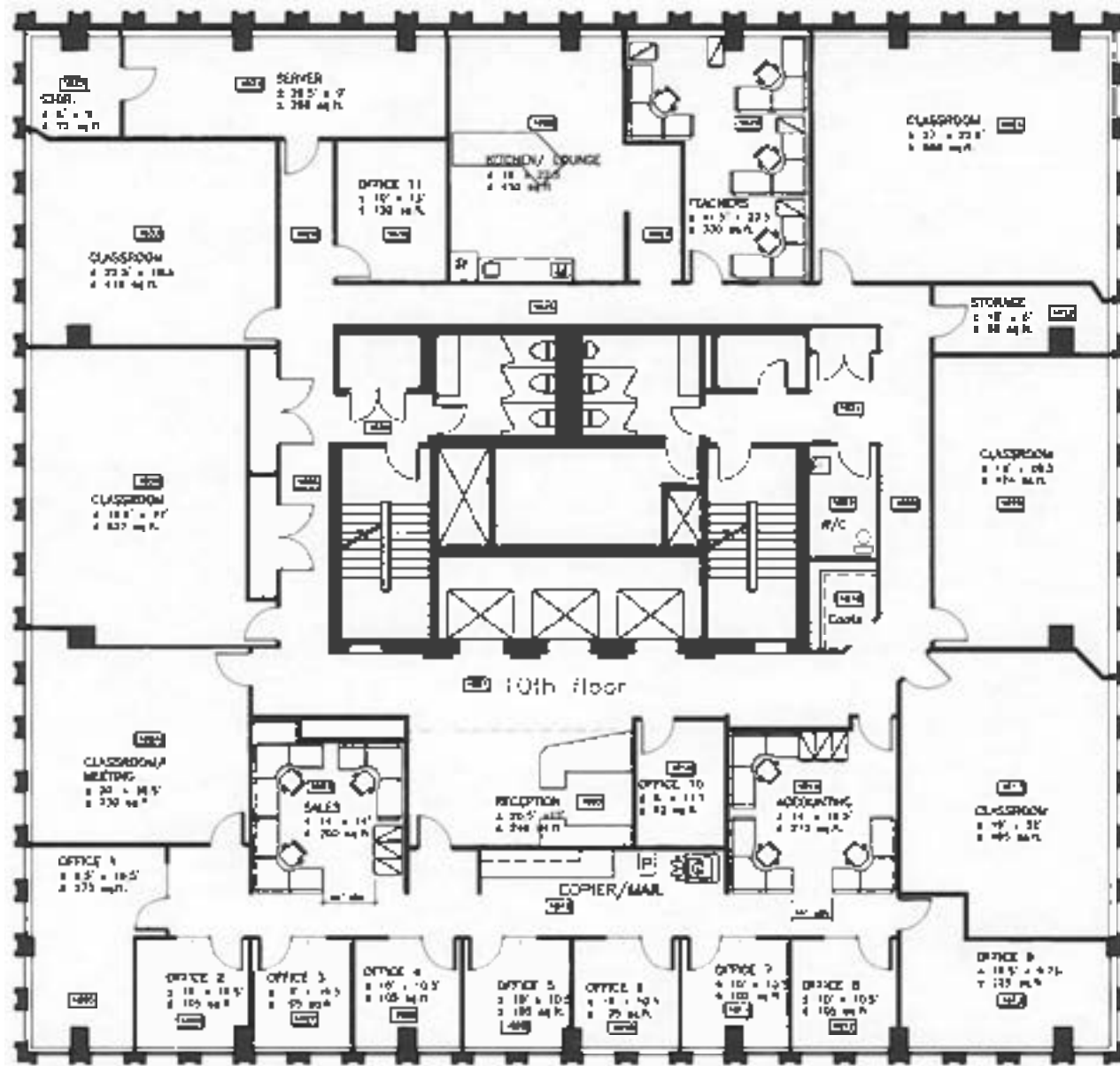
[▶ VIEW VIRTUAL TOUR](#)



10th Floor

Suite 1000: 8,690 SF

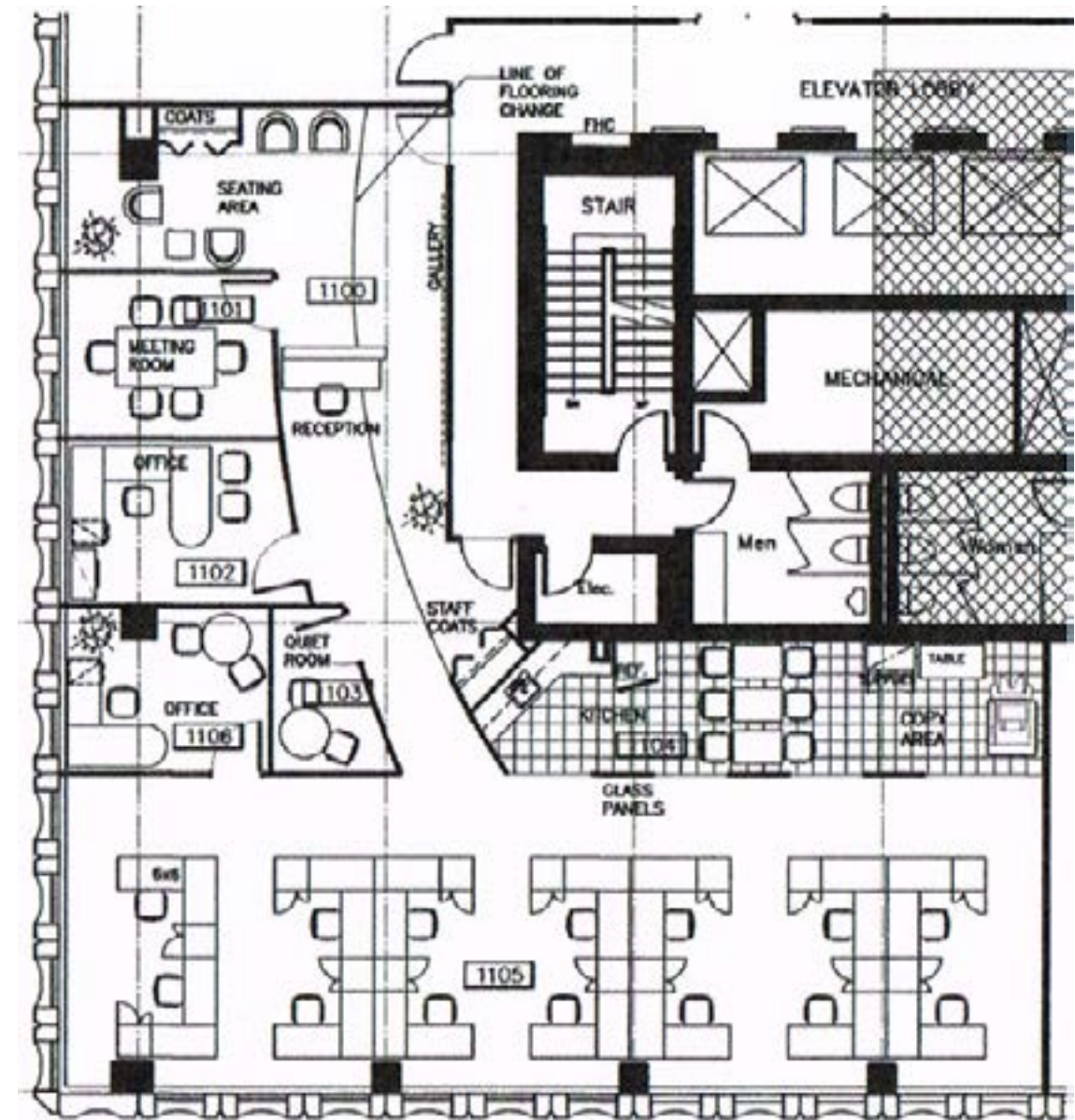
- Full floor opportunity; mix of offices and training rooms



11th Floor

Suite 1100: 2,795 SF

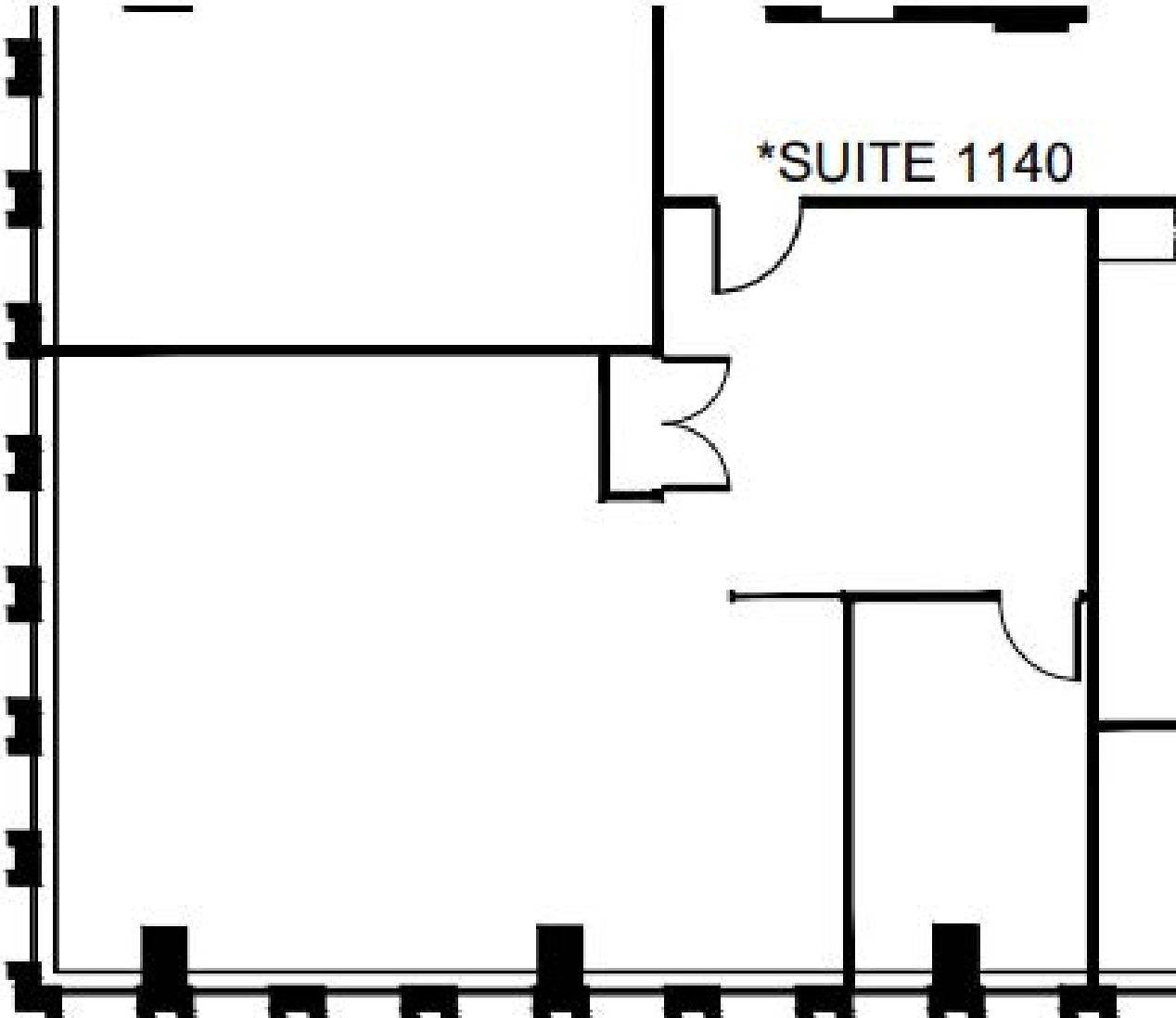
- Fully built space; 3 offices, 1 meeting room, kitchen and open work stations



11th Floor

Suite 1140: 1,224 SF

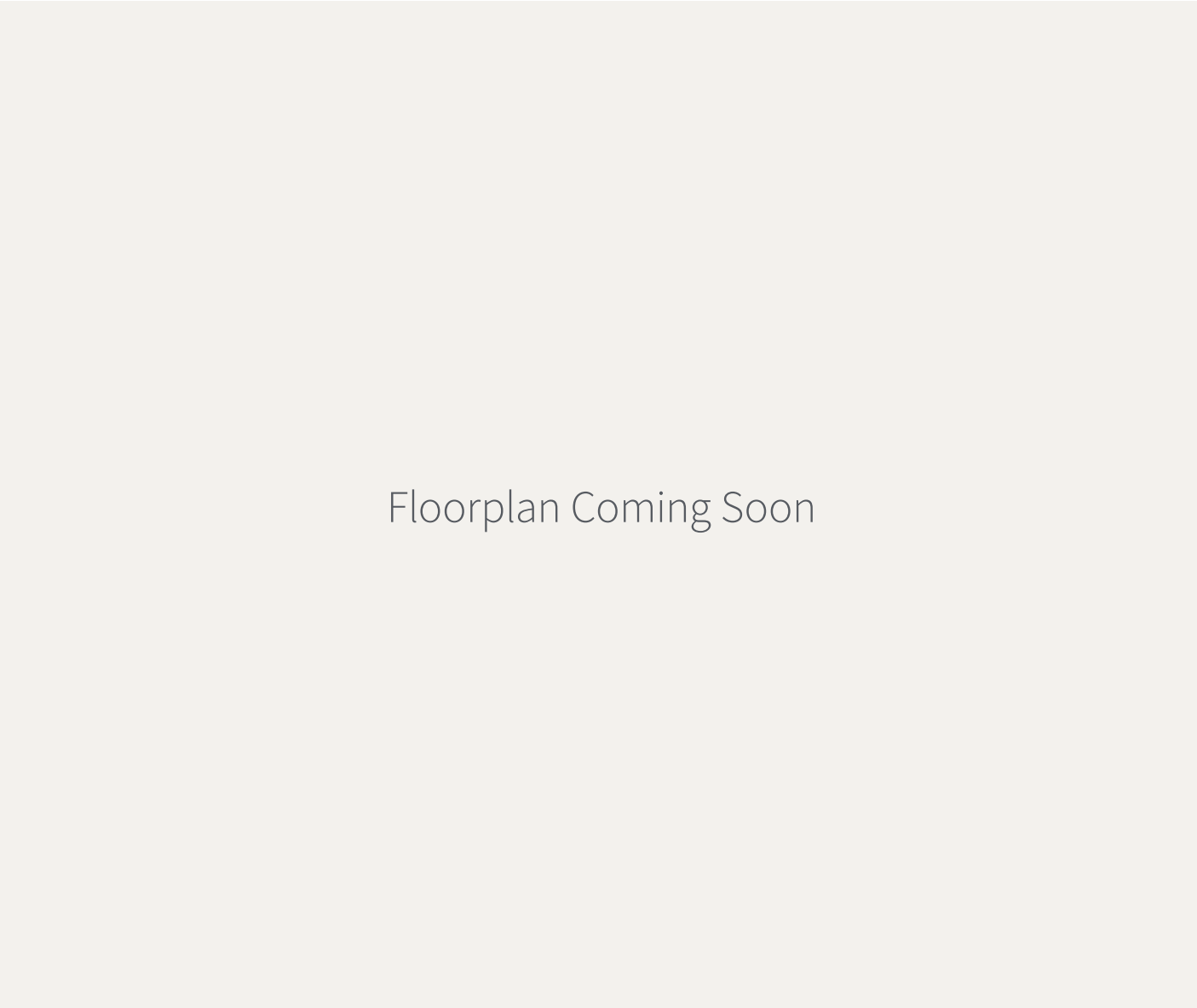
- Fully improved space – 1 enclosed office/ meeting room and open area



11th Floor

Suite 1150: 2,455 SF

- Fully built space with 6 offices, 1 boardroom, kitchen and storage room.
- Available April 1, 2024



Food

- | | |
|---------------------------|-----------------------------|
| 1. Parliament Pub | 12. Tim Hortons |
| 2. Bridgehead | 13. Sushi Kan 3 |
| 3. Milestones | 14. Eggspectation |
| 4. Metropolitan Brasserie | 15. Tosca |
| 5. Courtyard | 16. Rangoon |
| 6. Sidedoor | 17. Grounded Kitchen |
| 7. Restaurant 18 | 18. Clocktower |
| 8. Chez Lucien | 19. Johnny Farina |
| 9. Bier Markt | 20. Beckta |
| 10. McDonald's | 21. Royal Oak |
| 11. Starbucks | 22. Mamma Teresa Ristorante |




Retail

- | | |
|-----------------------|----------------------|
| 1. Rideau Centre | 5. Chapters |
| 2. The Bay | 6. Apple Store |
| 3. LCBO | 7. Marcello's Market |
| 4. Shoppers Drug Mart | |

Services

1. RBC
2. CIBC
3. Scotiabank
4. TD Bank
5. BMO
6. Bank of Canada

Other

-  Light Rail Station
-  Bus Stop
-  Parking

Driving Times

Ottawa International Airport	20 mins
Parliament Hill	4 mins



220 Laurier Ave W

Ottawa, ON

Contact

Stephanie Lui*

Associate Vice President

613 323 7883

Stephanie.Lui@jll.com



*Although information has been obtained from sources deemed reliable, JLL does not make any guarantees, warranties or representations, express or implied, as to the completeness or accuracy as to the information contained herein. Any projections, opinions, assumptions or estimates used are for example only. There may be differences between projected and actual results, and those differences may be material. JLL does not accept any liability for any loss or damage suffered by any party resulting from reliance on this information. If the recipient of this information has signed a confidentiality agreement with JLL regarding this matter, this information is subject to the terms of that agreement. ©2024. Jones Lang LaSalle IP, Inc. All rights reserved. *Sales Representative **Broker*