



**CUSHMAN &
WAKEFIELD**

Ottawa

150 METCALE ST.

Ottawa, ON

**Office 15,404 SF & Retail 485 SF
Space Available**

BUILDING OVERVIEW

Suites under a full floor (6,300 sf) are in move in condition, with new improvements on several floor locations. All Column free space. The security desk is manned late afternoon to early morning and all weekends. There is a 7 level parking garage and amenities such as coffee shop (to be confirmed), showers and bike racks available.



1

Outstanding North
to South horizon
views

2

550 meters to
Parliament LRT
station

150 METCALFE STREET AVAILABLE SUITES

VIEW FLOOR-
PLAN & PHOTOS



10th Floor: 3,370 SF

13th Floor: 1,112 SF

14th Floor: 6,369 SF

16th Floor: 3,163 SF

Ground Floor: 485 SF

**Total Office Space:
15,404 SF**

**Retail Space:
485 SF**



3

Indoor parking, 5 min.
access to Nicholas
QWY ramp

4

Window sizes are
80% of vertical wall
height

5

All column free space
for efficient interior
design

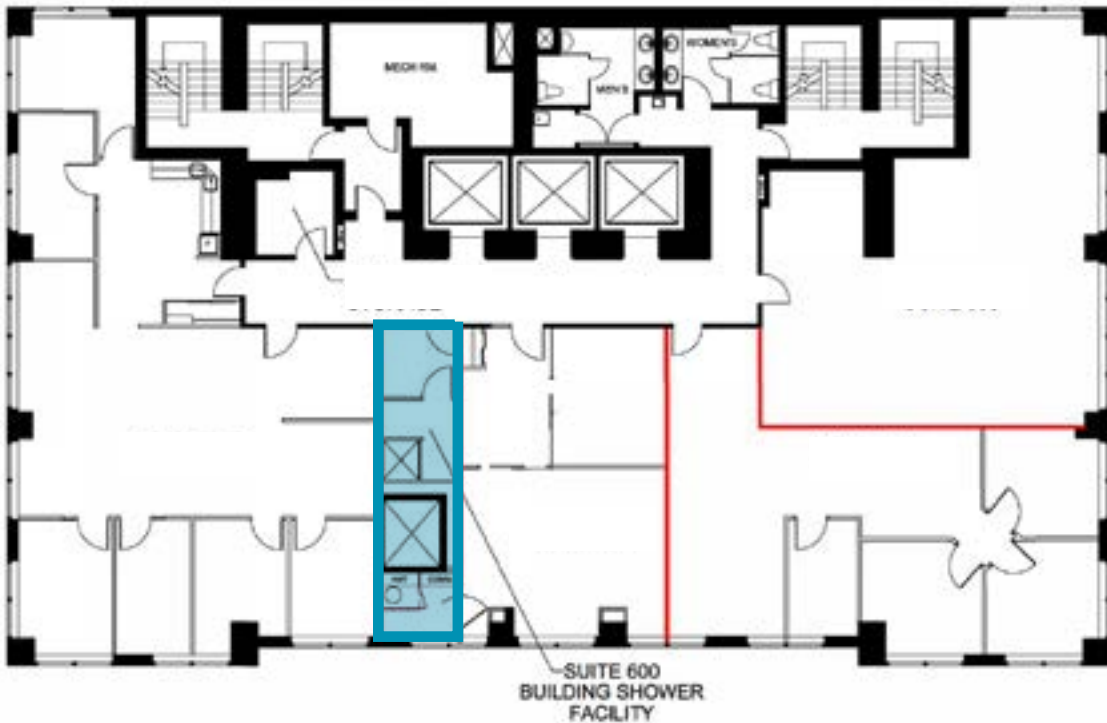
“

CLASS ‘A’ OFFICE SPACE

”



BUILDING SHOWER FACILITIES ON THE 6TH FLOOR



“

CLEAN & MODERN

”

RETAIL SPACE



Ground Floor
485 SF

Retail (coffee shop operators invited to lease these premises).
Available on 30 days notice. Includes covered patio.

“

INCLUDES COVERED PATIO

”



AREA AMENITIES



Restaurants

1. Beckta Dining & Wine
2. Starbucks
3. Riviera Ottawa
4. Toca
5. Browns Socialhouse
6. Bâton Rouge Streakhouse

Hotels

7. The ARC Hotel
8. Sheraton Ottawa
9. Ottawa Marriott
10. Delta Hotels by Marriott
11. The Lord Elgin

Other

12. CF Rideau Center
13. Ottawa Courthouse
14. National Arts Centre

CONTACT

PAUL BENNETT
Senior Vice President / Broker
+1 613 780 1590
pbennett@cwottawa.com

