



**100** | ARGYLE AVENUE  
OTTAWA, ONTARIO

**OFFICE SPACE FOR LEASE**

887 sq.ft. available

Low gross rents

**Paul Miller**

Real Estate Sales Representative  
Colonnade BridgePort Realty Inc., Brokerage

[pmiller@colonnadebridgeport.ca](mailto:pmiller@colonnadebridgeport.ca)  
613.225.8118 x426

## Opportunity

Suite LL200 - 887 sq.ft. (Oct. 1/19)

## Lease Details

Low gross rents: Contact us.

## Highlights



Access to OC Transpo at Catherine Street and Elgin Street.



Minutes from Elgin Street shops and restaurants, and the central business district.



Minutes to HWY. 417 via Catherine Street at O'Connor Street

Across from the Museum of Nature



Fully improved space with bright natural light.

Access to shared boardroom



## CONTACT

### Paul Miller

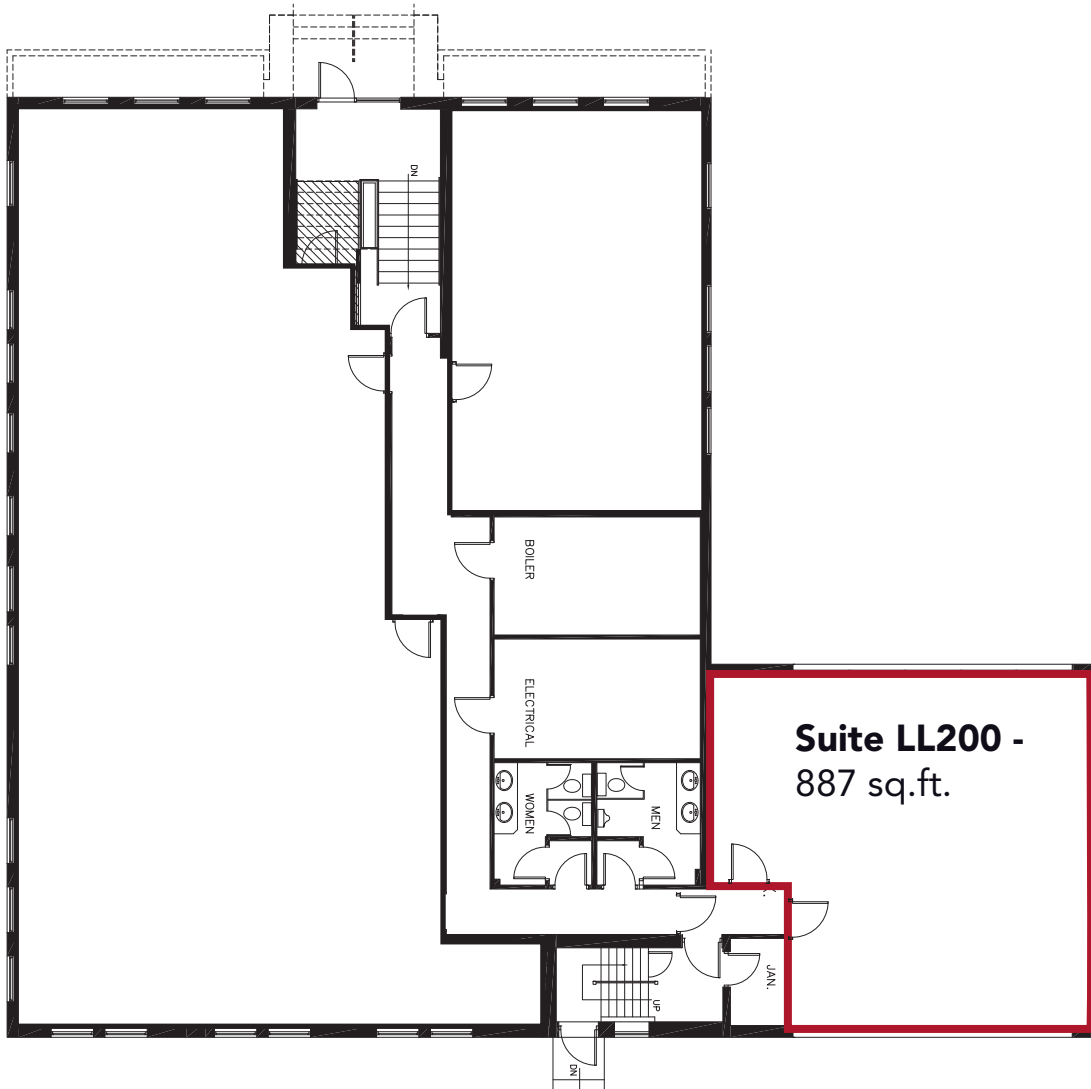
Real Estate Sales Representative  
Colonnade BridgePort Realty Inc., Brokerage

[pmiller@colonnadebridgeport.ca](mailto:pmiller@colonnadebridgeport.ca)  
613.225.8118 x426



## Available Space

**Suite LL200 - 887 sq.ft.**



## CONTACT

**Paul Miller**

Real Estate Sales Representative  
Colonnade BridgePort Realty Inc., Brokerage

[pmiller@colonnadebridgeport.ca](mailto:pmiller@colonnadebridgeport.ca)  
613.225.8118 x426