

# FOR LEASE

2120 ROBERTSON ROAD

Ottawa, ON K2H 5Z1



**JOHN ZINATI**  
613.853.4106  
john@zinatirealty.com

92 CENTREPOINTE DRIVE • OTTAWA, ON K2G 6B1 • 613.853.4106 • ZINATIREALTY.COM

 **ZINATI**  
REALTY  
COMMERCIAL BROKERAGE



### OFFERING SUMMARY

Available SF:	674 - 867 SF
Lease Rate (Suite 203):	\$14.00 SF/yr (NNN)
Additional Rent (Suite 203):	approx. \$15.33 PSF
Lease Rate (Suite B101):	\$20.00 SF/yr (GROSS)

### PROPERTY OVERVIEW

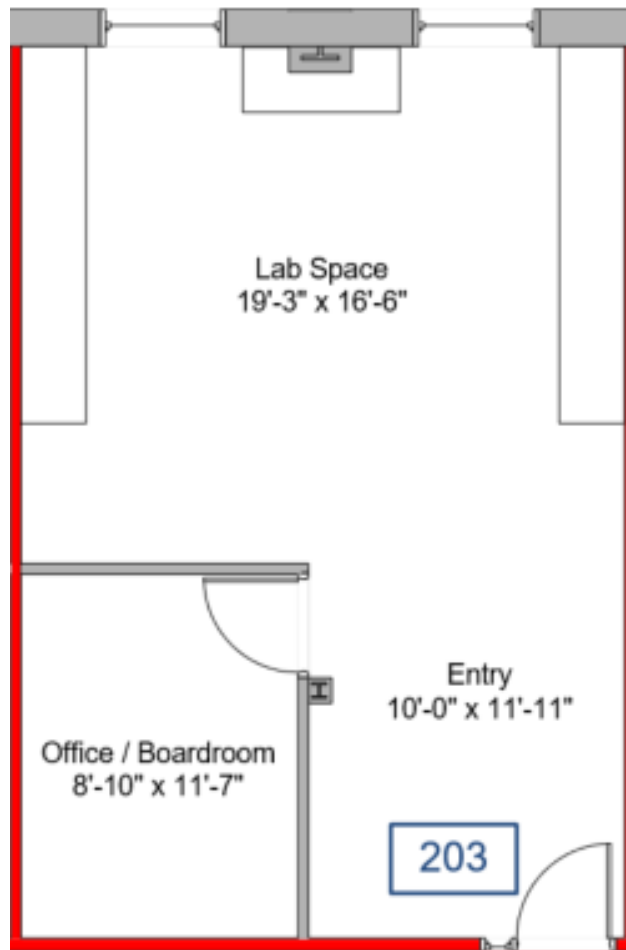
Office space available for lease in the heart of Bells Corners. Suite B101 (approx. 867 SF in lower level) features three (3) enclosed offices, boardroom, and small open workspace. Suite 203 (approx. 674 SF on second floor) features open workspace and one (1) enclosed office. Convenient access to HWY 417 E & W and public transit available along Robertson Road. Close proximity to many great amenities including McDonald's, Tim Horton's, Subway, Canadian Tire, Rexall, Loblaws, and many more.

### PROPERTY HIGHLIGHTS

- Common washrooms
- Shared kitchenette (located in basement)
- Security cameras in common areas
- On-site parking available (4 per 1,000 SF)
- Lobby and hallway directional signage

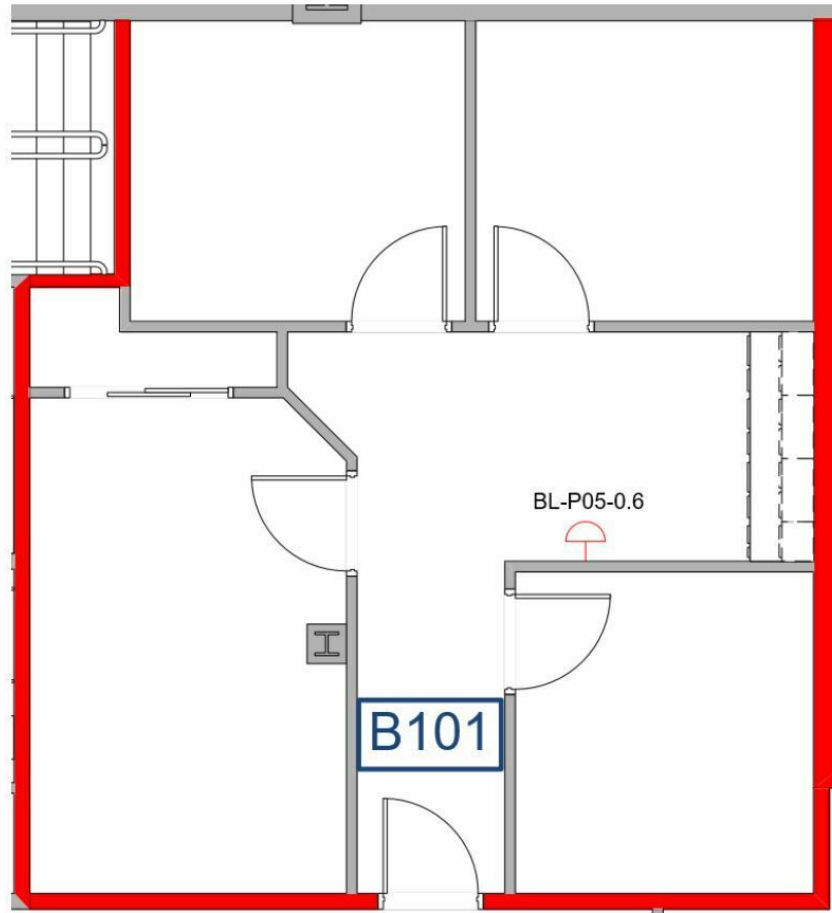
2120 ROBERTSON ROAD  
OTTAWA, ON K2H 5Z1

Floor Plan - Suite 203



JOHN ZINATI  
613.853.4106  
john@zinatirealty.com

92 CENTREPOINTE DRIVE • OTTAWA, ON K2G 6B1 • 613.853.4106 • ZINATIREALTY.COM





Suite B101



Suite B101

**JOHN ZINATI**

613.853.4106

john@zinatirealty.com

92 CENTREPOINTE DRIVE • OTTAWA, ON K2G 6B1 • 613.853.4106 • ZINATIREALTY.COM

# 2120 ROBERTSON ROAD OTTAWA, ON K2H 5Z1

Retailer Map



**JOHN ZINATI**  
613.853.4106  
john@zinatirealty.com

92 CENTREPOINTE DRIVE • OTTAWA, ON K2G 6B1 • 613.853.4106 • ZINATIREALTY.COM

**ZINATI**  
REALTY  
COMMERCIAL BROKERAGE