

4500 5 Street NE, Unit 6

Calgary, Alberta

Evan Renwick

Vice President

+1 403 750 0807

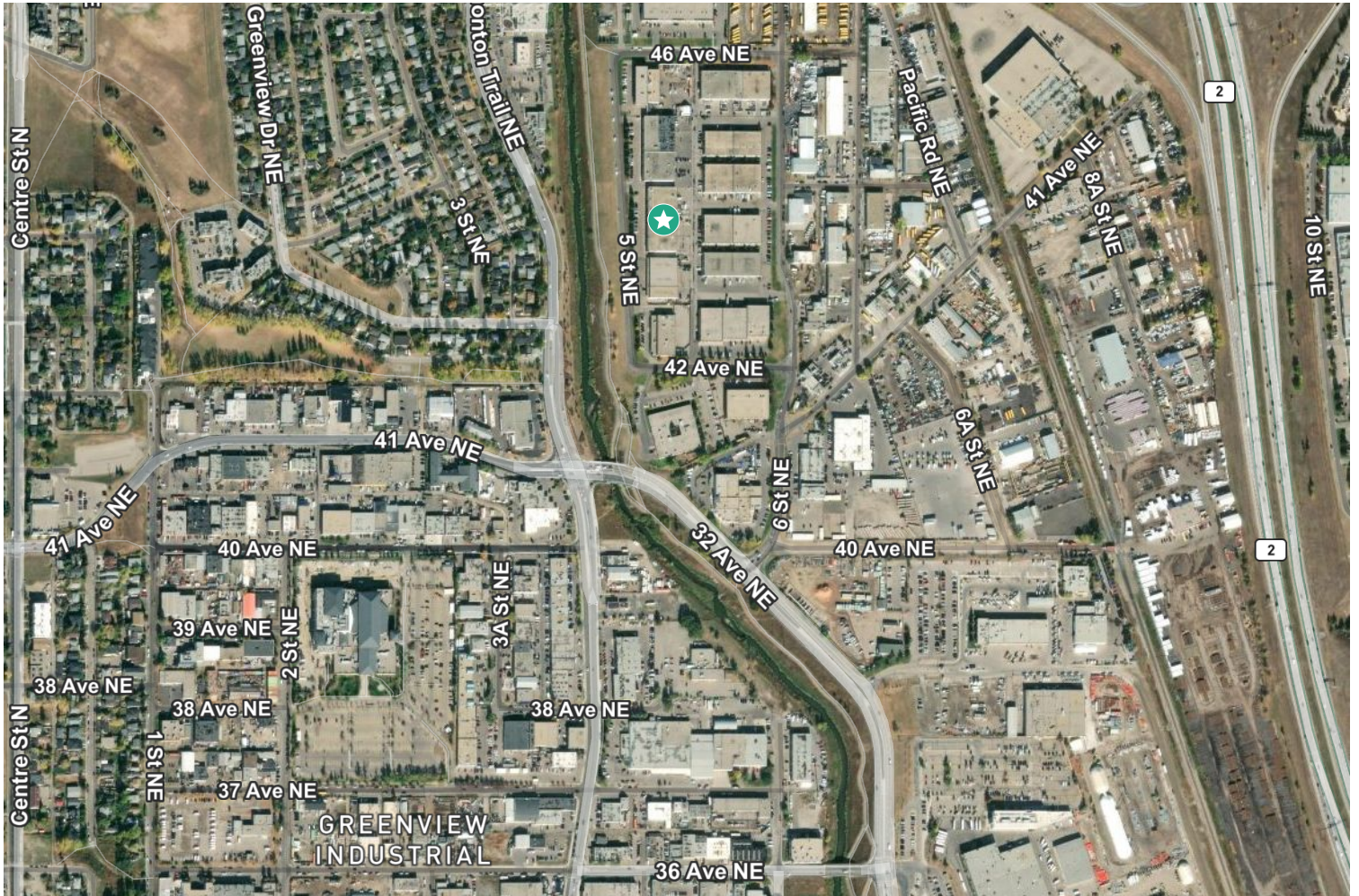
evan.renwick@cbre.com

960 SF 2nd Floor Office Unit Available for Lease



4500 5 Street NE, Unit 6

Calgary, Alberta | T2E 7C3



Rentable Area 960 SF

Zoning I-G (Industrial-General)

Operating Costs \$5.90 PSF

Lease Rate \$11.50 PSF + escalations

Availability Immediately

I-G

Zoning

\$5.90

Operating Costs (PSF)

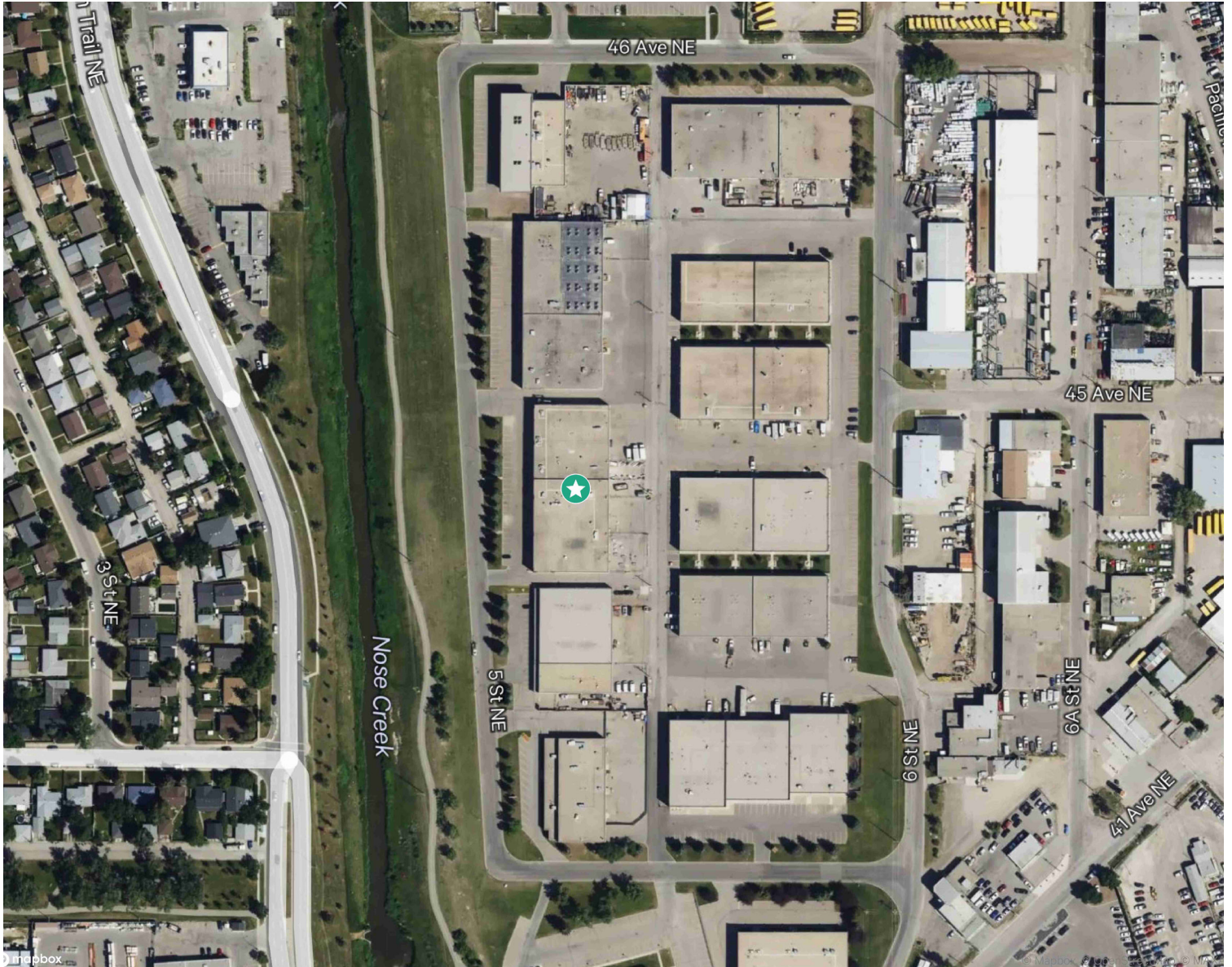
\$11.50

Lease Rate (PSF)

Property Highlights

- + 2nd floor office space available for lease
- + The space consists of two private offices, open work area, a kitchenette and one washroom
- + Close proximity to several amenities such as various restaurants, retailers and the Calgary International Airport
- + Excellent access to major transportation roads including McKnight Boulevard NE, Deerfoot Trail and 16th Avenue/Trans-Canada Highway





Contact Us

Evan Renwick

Vice President
+1 403 750 0807
evan.renwick@cbre.com
*Lead Broker

Iain Ferguson

Vice Chairman
+1 403 750 0803
iain.ferguson@cbre.com

Luke Hamill

Senior Vice President
+1 403 294 5707
luke.hamill@cbre.com

Cameron Woods

Vice President
+1 403 303 4562
cameron.woods@cbre.com

Blake Ellis

Vice President
+1 403 750 0519
blake.ellis@cbre.com

Kai Ravensbergen

Associate
+1 403 750 0525
kai.ravensbergen@cbre.com

This disclaimer shall apply to CBRE Limited, and to all divisions of the Corporation ("CBRE"). The information set out herein (the "Information") has not been verified by CBRE, and CBRE does not represent, warrant or guarantee the accuracy, correctness and completeness of the Information. CBRE does not accept or assume any responsibility or liability, direct or consequential, for the Information or the recipient's reliance upon the Information. The recipient of the Information should take such steps as the recipient may deem necessary to verify the Information prior to placing any reliance upon the Information. The Information may change and any property described in the Information may be withdrawn from the market at any time without notice or obligation to the recipient from CBRE.

Mapping Sources: Canadian Mapping Services canadamapping@cbre.com; DMTI Spatial, Environics Analytics, Microsoft Bing, Google Earth.