

Office | For Lease

CBRE

Carver Building

Up to 7,643 SF available

14815 - 119 Avenue
Edmonton, Alberta T5L 2N9
www.cbre.ca



Carver Building

14815 - 119 Avenue | Edmonton, Alberta T5L 2N9



Carver Building

Attractive & modern office space

Move in ready space with flexible size options. Fully developed space over two floors, with functional layouts for a variety of users. Numerous upgrades have been completed to the 2nd floor.

Leasing Details

Property Address	14815 119 Avenue
Zoning	Medium Industrial Zone (IM)
Year Built	1974
Area Breakdown	Main Floor: ± 3,664 SF Second Floor: ± 3,979 SF
Net Rental Rate	\$9.00 - \$11.00 / SF
Operating Costs	\$7.66 / SF + janitorial
Parking Ratio	25 surface stalls ± 2.3 stalls / 1,000 SF (Street parking also available)
Parking Cost	Included
Signage	Negotiable

2

Floors Available

7,643 SF

Maximum Contiguous Space Available



Carver Building

14815 - 119 Avenue | Edmonton, Alberta T5L 2N9

Main Floor

±3,664 SF

Enclosed offices (5)

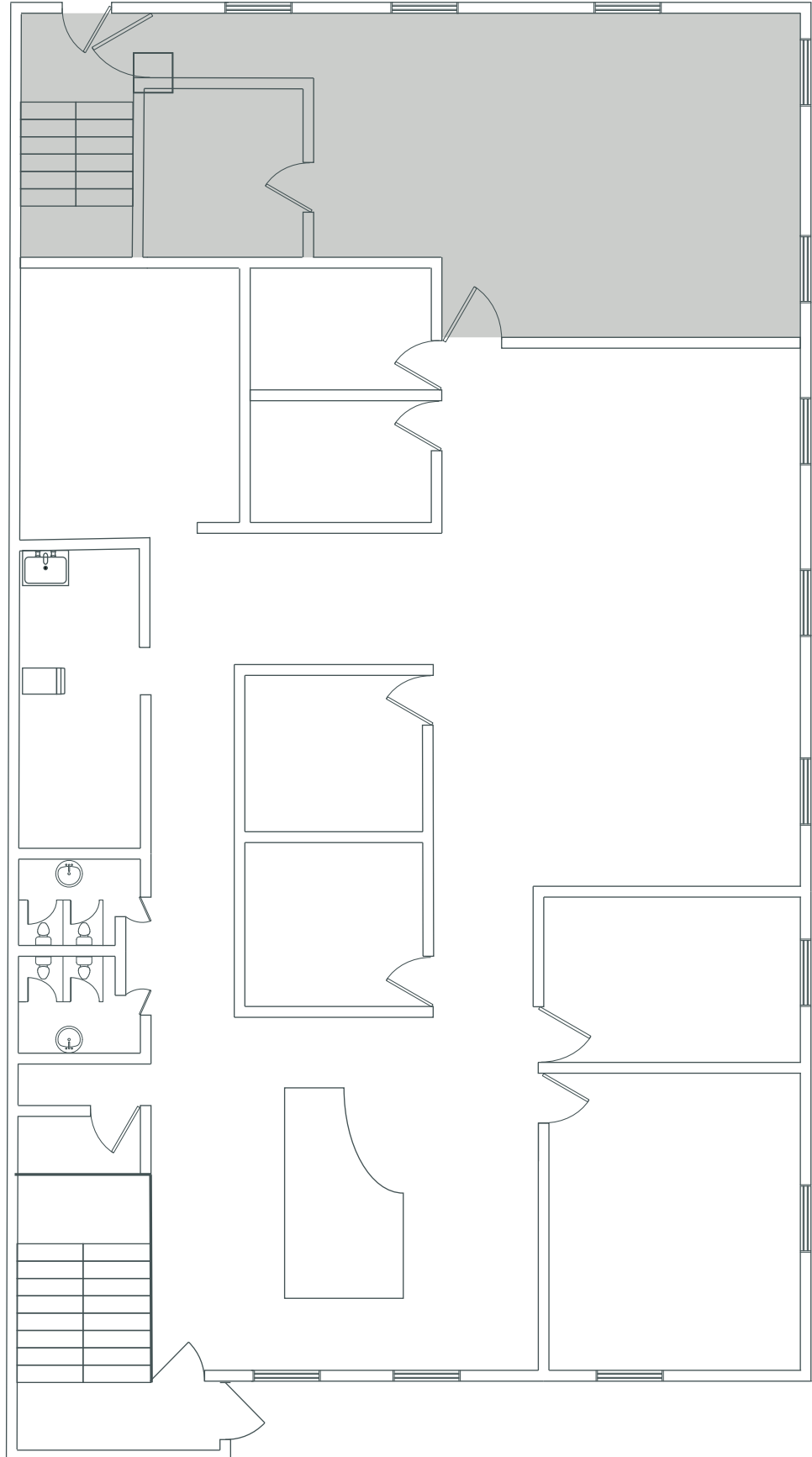
Open area for workstations

Meeting rooms (2)

Reception area

Kitchen

Washrooms



For Lease



Carver Building

Carver Building

14815 - 119 Avenue | Edmonton, Alberta T5L 2N9

2nd Floor

±3,979 SF

Enclosed offices (6)

Large training room /
enclosed open work area

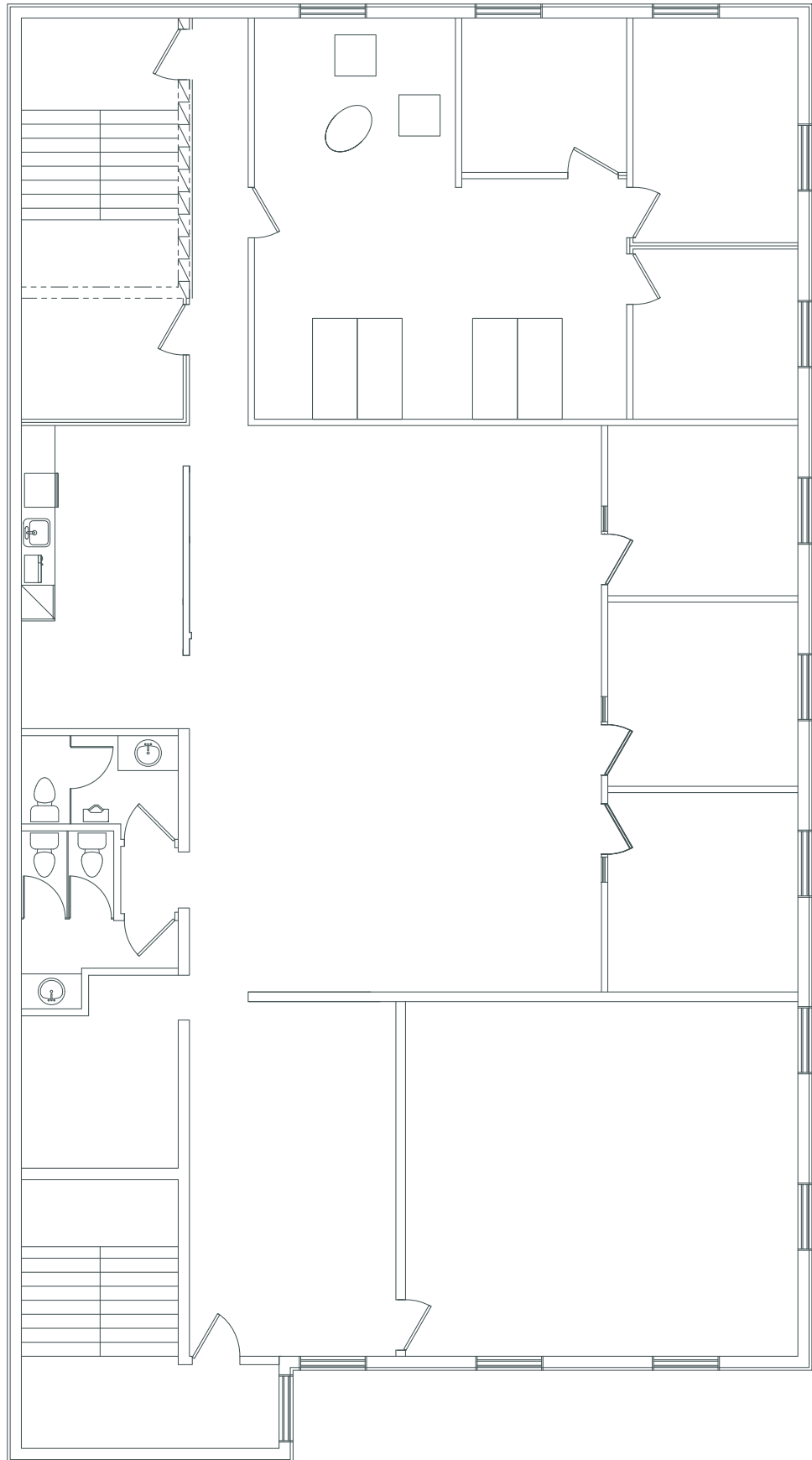
Open areas for workstations

Reception / lounge area

Kitchen

Secure Storage

Washrooms



For Lease

Carver Building



Carver Building

14815 - 119 Avenue | Edmonton, Alberta T5L 2N9

For Lease

3 MIN

To Yellowhead Trail

6 MIN

To St. Albert Trail
/ Groat Road

12 MIN

To Anthony Henday

12 MIN

To Downtown



Contact Us

Jeff Simkin

Senior Vice President

+1 780 917 4633

jeff.simkin@cbre.com

All rights reserved. This disclaimer shall apply to CBRE Limited, and to all divisions of the Corporation ("CBRE"). The information set out herein (the "Information") has not been verified by CBRE, and CBRE does not represent, warrant or guarantee the accuracy, correctness and completeness of the Information. CBRE does not accept or assume any responsibility or liability, direct or consequential, for the Information or the recipient's reliance upon the Information. The recipient of the Information should take such steps as the recipient may deem necessary to verify the Information prior to placing any reliance upon the Information. The Information may change and any property described in the Information may be withdrawn from the market at any time without notice or obligation to the recipient from CBRE.