

SUITE 200, 11232 -163 STREET - 3,761 SF - FORMER DANCE STUDIO



SUITE 200, 11246-163 STREET - 2,703 SF - 2ND FLOOR OFFICE



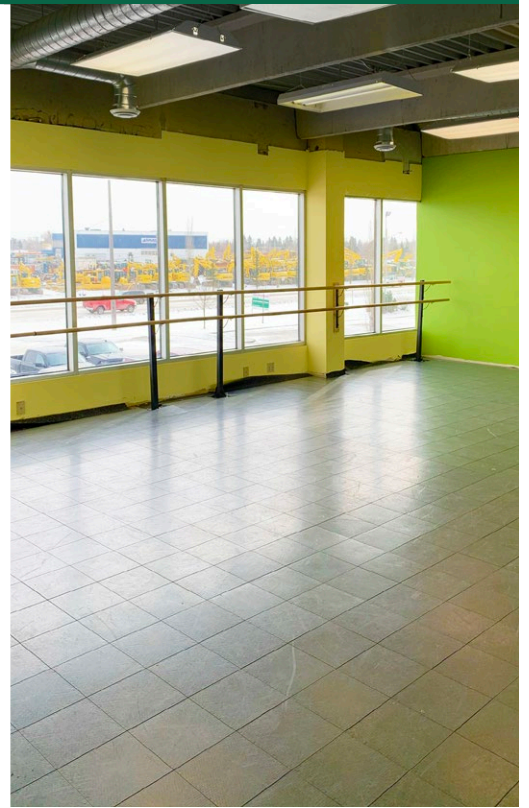
**AFFORDABLE
2ND FLOOR
OFFICE SPACES**

11232 - 163 STREET
11246 - 163 STREET
EDMONTON, ALBERTA

2,703-3,761 SF

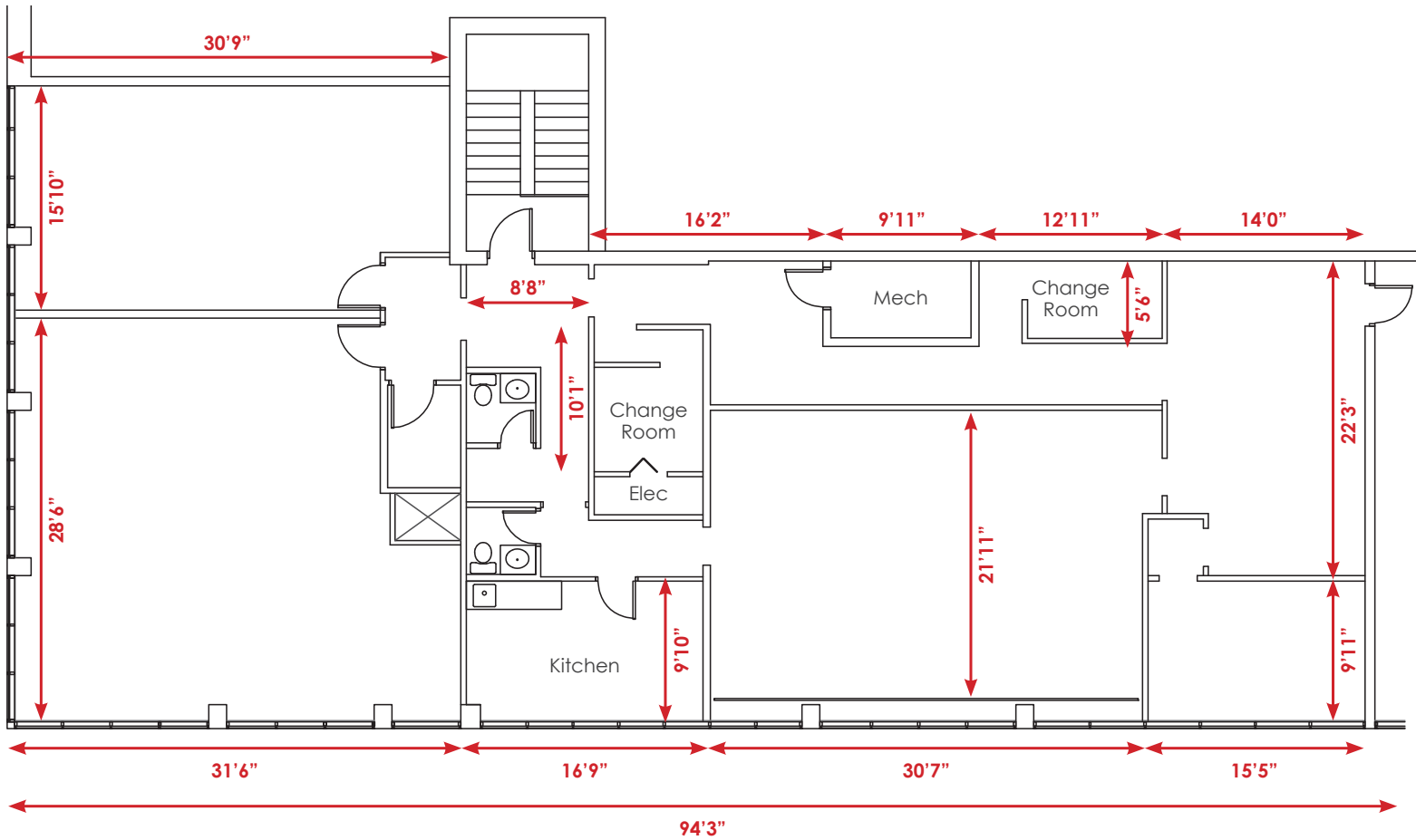
Available Area	2,703 sq. ft. 11246 - 163 St, Suite 200 3,761 sq. ft. 11232 - 163 St, Suite 200
Floor	Second Floor
Net Rental Rate	\$9.50
Additional Rent	\$6.21 + utilities (2024)
Parking	Ample surface
Heating / AC	Separate heating / ac control
Available	Immediately

Neighbouring tenants in the complex:
Princess Auto, Bianca Amor's Liquidation Supercentre.



Floor Plan

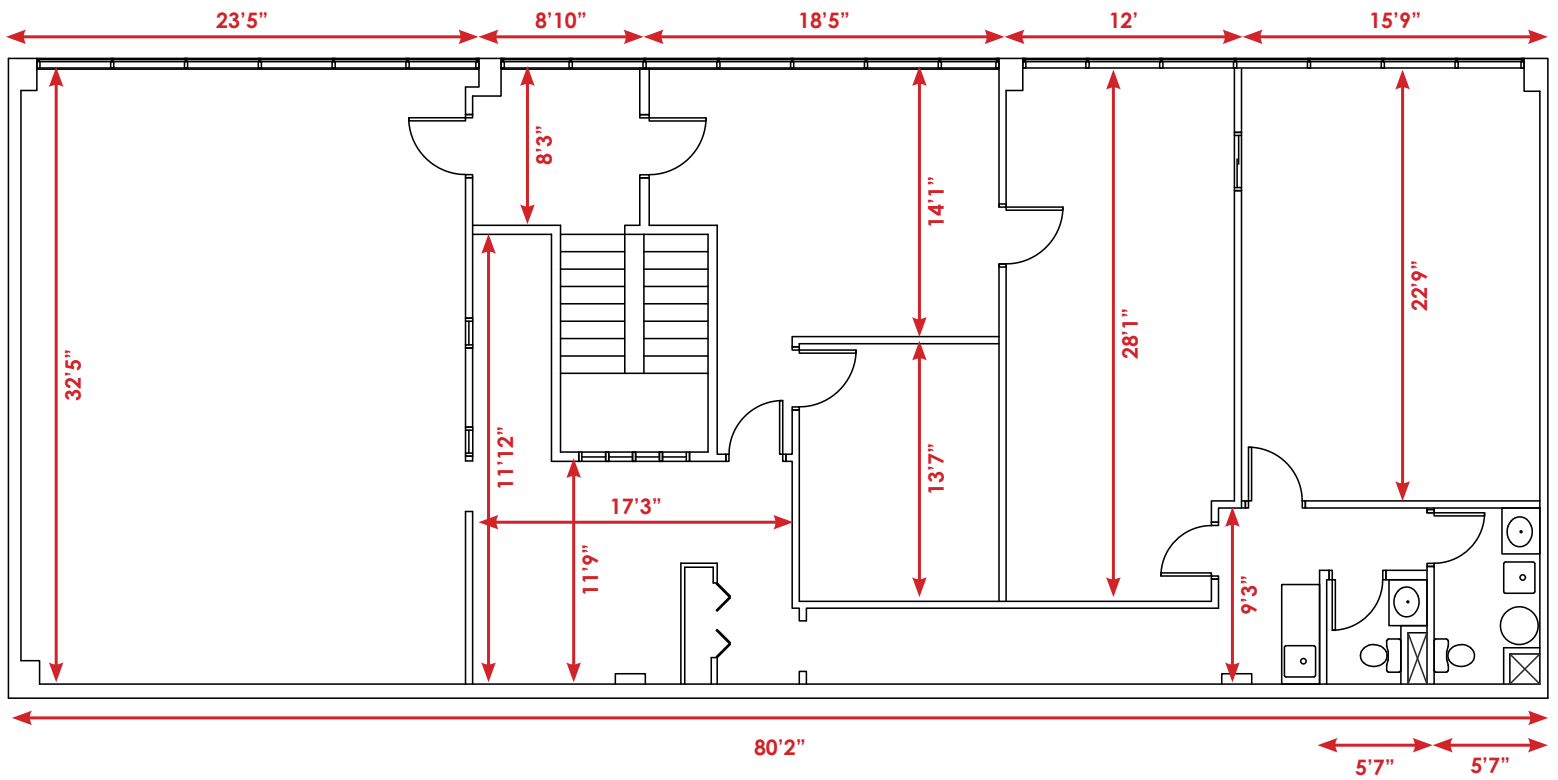
11232 - 163 Street | Suite 200 | 3,761 sq. ft.

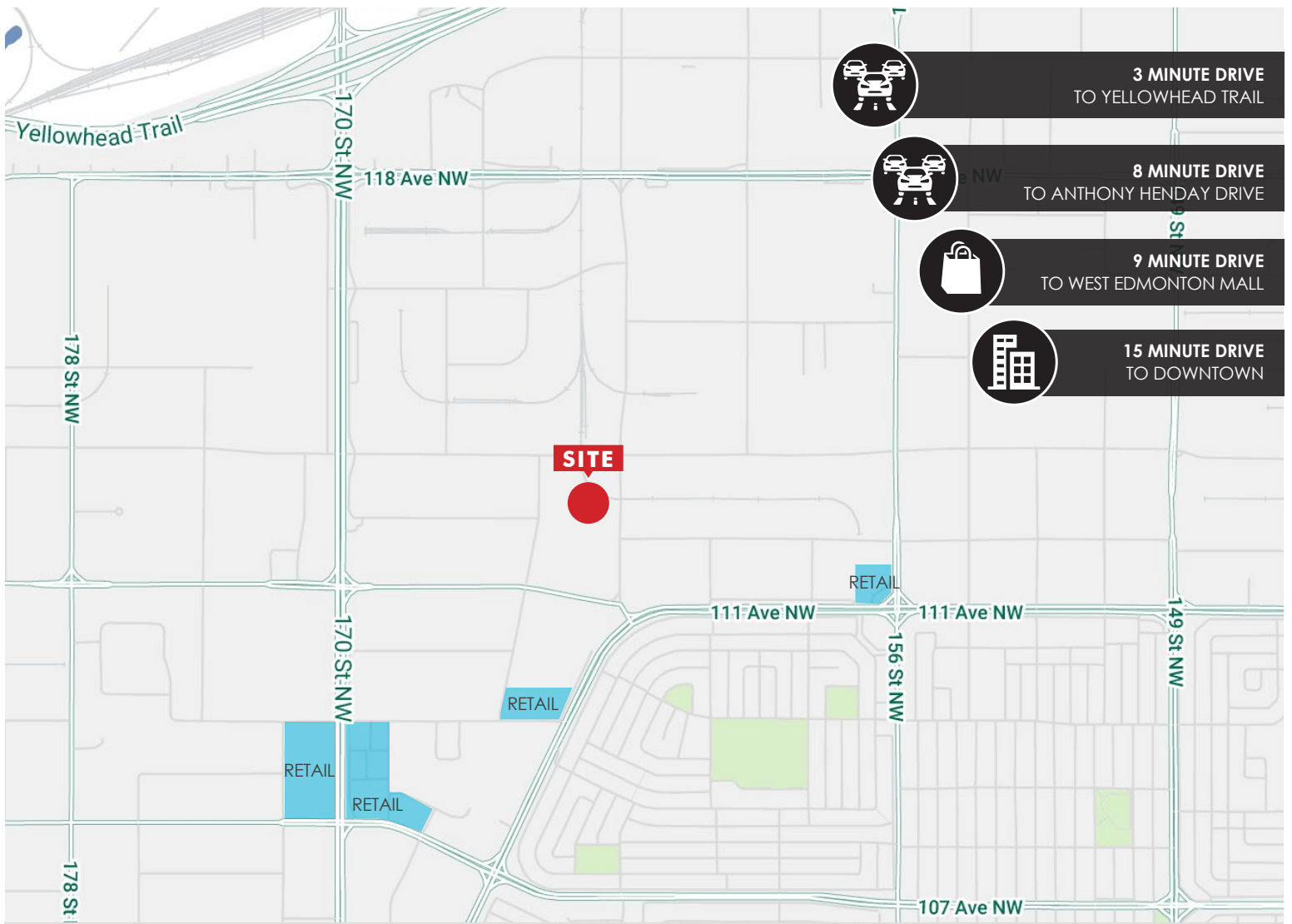




Floor Plan

11246 - 163 Street | Suite 200 | 2,703 sq. ft.





Nearby Amenities

Tim Hortons	Sweet Convenience
Esso	TD Bank
Fountain Tire	Harvey's
Page The Cleaner	Fifendeckel
McDonalds	Wendy's
A&W	IHop
Tokyo Express	Mr. Sub
ATB Financial	Costco
Mayfield Dinner Theatre	

Mayfield Common Area (5 Min Drive)

Save-On-Foods	Red Lobster
Dollarama	Boston Pizza
Tim Hortons	Taco Time
JOEY Mayfield	A&W
JYSK	Winners
Mary Brown's	Party City
Shell	Bubbles Car Wash
RBC Bank	CIBC
Olive Garden	Carl's Jr.

West Edmonton Mall (9 Min Drive)

London Drugs	Italian Centre Shop
Indigo	Servus Credit Union
Freshii	Joliibee
Old Spaghetti Factory	Centex
Hudsons	Earls
Cactus Club Cafe	The Comic Strip
Marks	Orange Julius
Hudsons Bay	
Jubilations Dinner Theatre	

Find Out **More**

JEFF SIMKIN

Senior Vice President

780.917.4633

jeff.simkin@cbre.com

CBRE LIMITED | SUITE 1995 | MANULIFE PLACE | 10180 - 101 STREET | EDMONTON, AB

CBRE

This disclaimer shall apply to CBRE Limited, Real Estate Brokerage, and to all other divisions of the Corporation; to include all employees and independent contractors ("CBRE"). The information set out herein, including, without limitation, any projections, images, opinions, assumptions and estimates obtained from third parties (the "Information") has not been verified by CBRE, and CBRE does not represent, warrant or guarantee the accuracy, correctness and completeness of the Information. CBRE does not accept or assume any responsibility or liability, direct or consequential, for the Information or the recipient's reliance upon the Information. The recipient of the Information should take such steps as the recipient may deem necessary to verify the Information prior to placing any reliance upon the Information. The Information may change and any property described in the Information may be withdrawn from the market at any time without notice or obligation to the recipient from CBRE. CBRE and the CBRE logo are the service marks of CBRE Limited and/or its affiliated or related companies in other countries. All other marks displayed on this document are the property of their respective owners. All Rights Reserved.