

CBRE

525 Cochrane Drive

CO-OP BROKER COMMISSION:

\$1.50 PER SQ. FT.
PER ANNUM

FOR LEASE

MARKHAM, ON

Professional Office Suite Ready for Tenant Fixturing!



525 Cochrane Drive
Markham | ON

Property Details


Availability Suite 204 - 3,981 sq. ft.


Net Rent \$17.00 per sq. ft. per annum
Includes "turnkey" to landlord's standards


Additional Rent \$13.65 per sq. ft. per annum (2024 estimate)
Insuite janitorial separate


Parking Ratio 4:1,000 sq. ft. leased

Highlights

 → Beautiful 2-storey "flex" office building

 → Immediate access to Highway 7, Highway 407 and Highway 404

 → YRT bus stop located in front that travels south to Don Mills Subway Station / CF Fairview Mall

 → Abundant surface parking

 → Electric vehicle charging station on-site

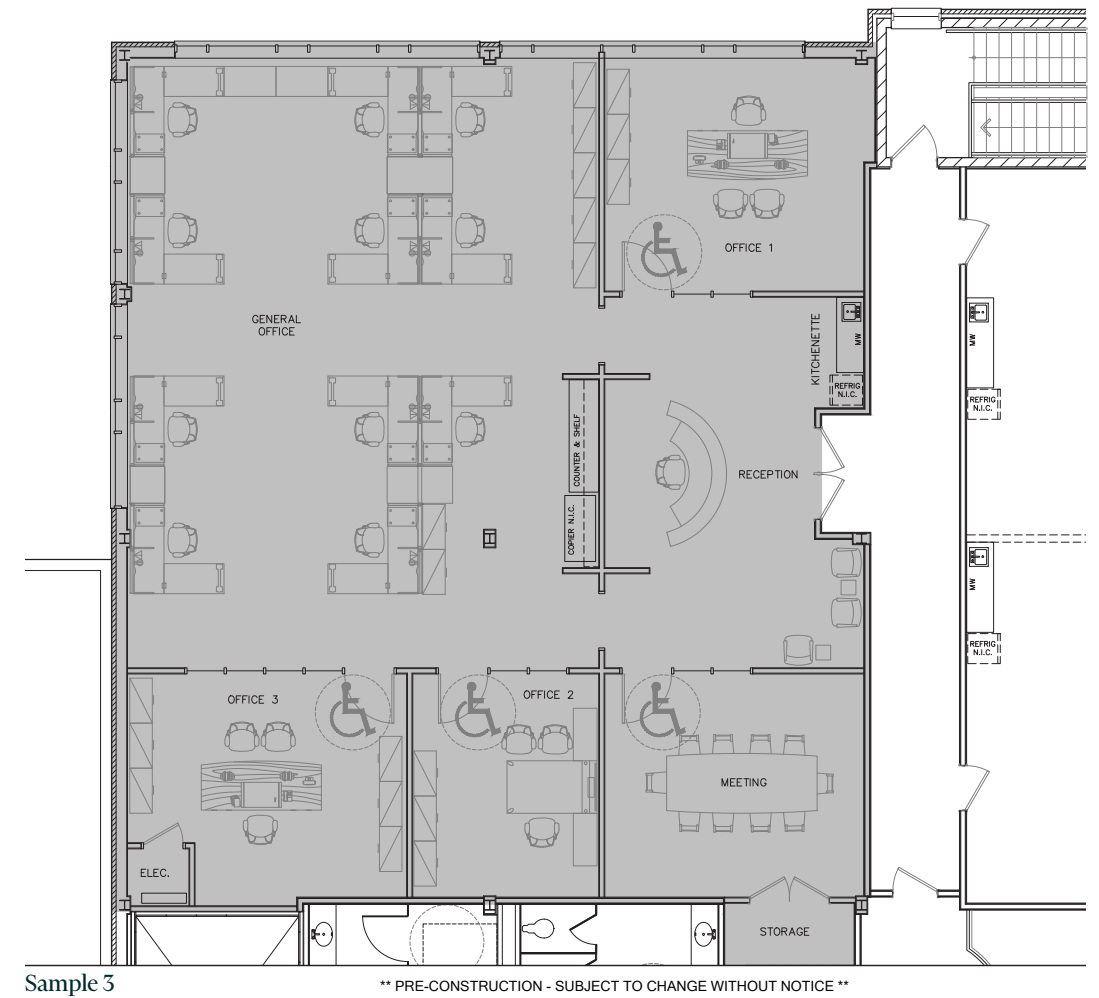
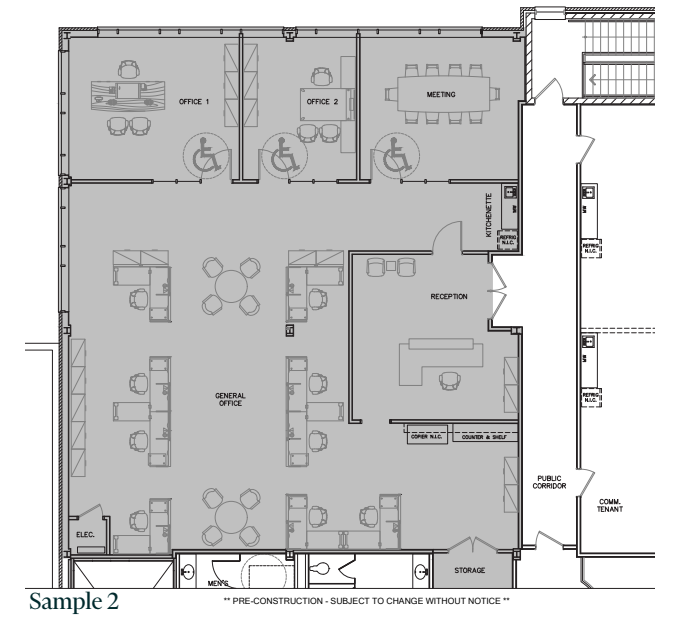
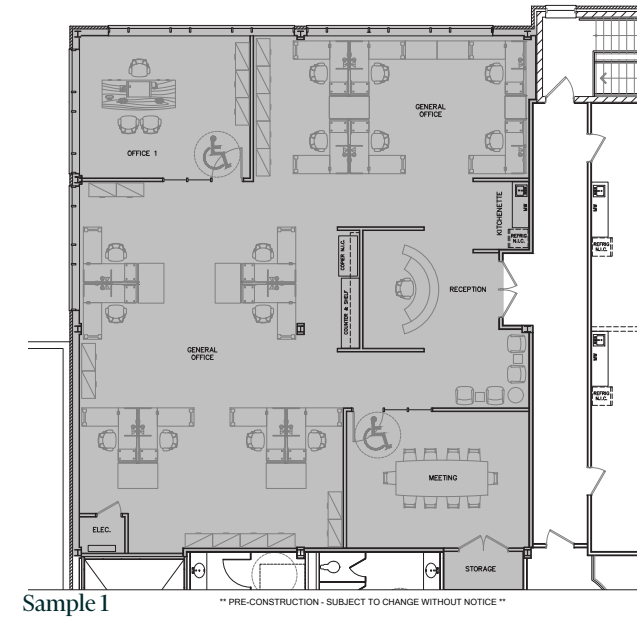
 → Public elevator

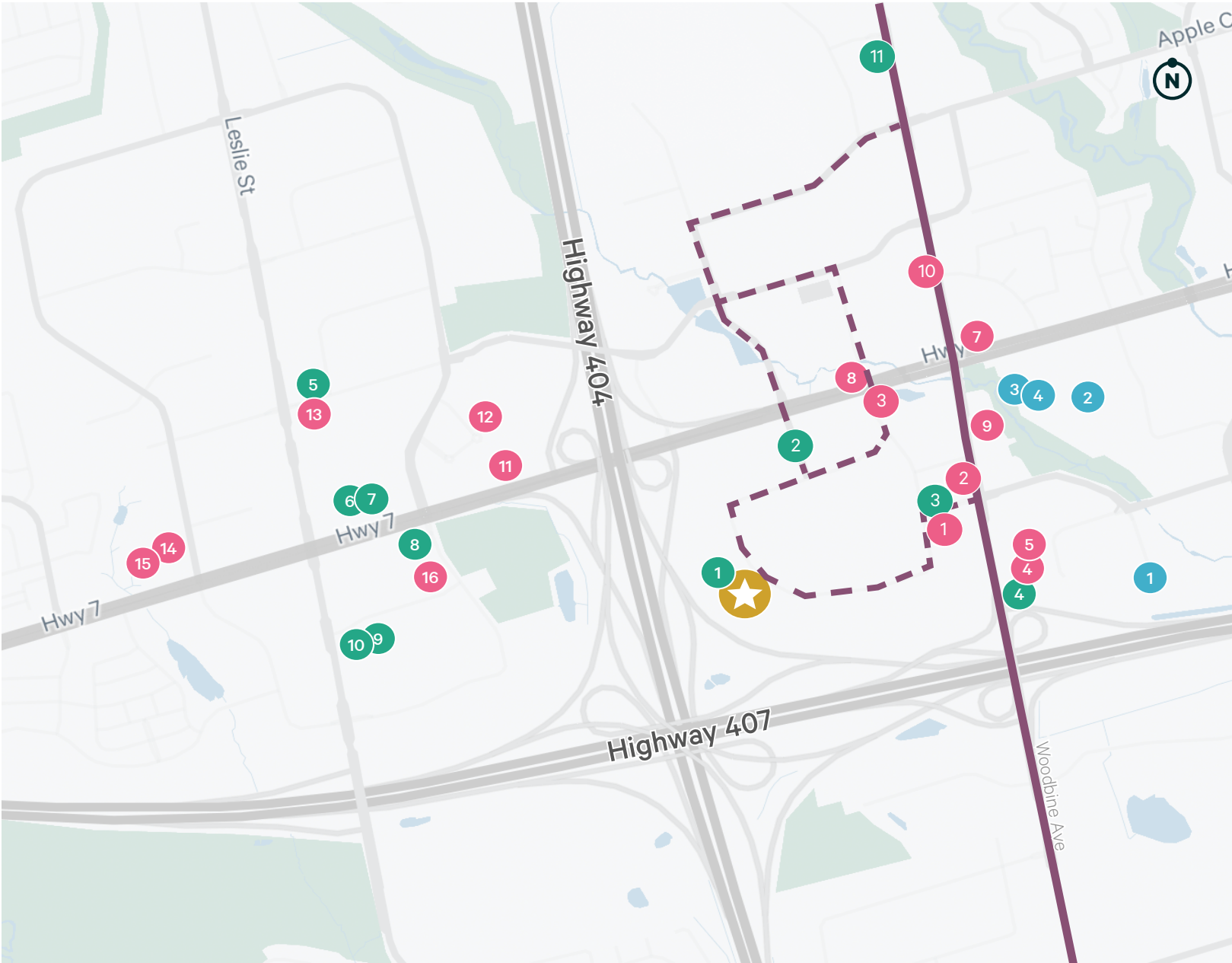


Floor Plan



Sample Build Outs





Amenities

Subject Property

24 Woodbine Bus
South to Don Mills Subway Station / CF Fairview Mall
North to Honda Boulevard
— Monday-Sunday
- - - Rush Hour Only

Shopping

1. Costco
2. Staples
3. LCBO
4. Longos

Restaurants

- | | |
|----------------------------|----------------------------|
| 1. Dragon Legend | 9. Providential 9 |
| 2. Café N One | 10. Chipotle Mexican Grill |
| 3. Novita Italian Cusinine | 11. Scaddabush |
| 4. Koke Teppanyaki & BBQ | 12. The Keg |
| 5. Skyview Fusion Cuisine | 13. Isaan Der |
| 6. Starbucks | 14. Yu Seafood |
| 7. Pizza Nova | 15. Shinta Japanese BBQ |
| 8. Burger King | 16. Duo Pâtisserie & Café |

Hotels

- | | |
|----------------------|-----------------------------|
| 1. Park Inn | 9. Residence Inn by Marriot |
| 2. Delta Hotels | 10. Courtyard by Marriot |
| 3. Comfort Inn | 11. Monte Carlo Inn |
| 4. Hampton Inn | |
| 5. Holiday Inn | |
| 6. Sheraton Parkway | |
| 7. Best Western | |
| 8. Hilton Garden Inn | |



Contact Us

Craig Williamson, MBA**
Senior Vice President
+1 416 495 6267
craig.williamson@cbre.com

Gary Williamson*
Senior Vice President
+1 416 495 6247
gary.williamson@cbre.com

*Sales Representative **Broker | All Outlines Are Approximate | CBRE Limited, Brokerage | 2005 Sheppard Ave. E., #800, Toronto, ON M2J 5B4

This disclaimer shall apply to CBRE Limited, Real Estate Brokerage, and to all other divisions of the Corporation; to include all employees and independent contractors ("CBRE"). The information set out herein, including, without limitation, any projections, images, opinions, assumptions and estimates obtained from third parties (the "Information") has not been verified by CBRE, and CBRE does not represent, warrant or guarantee the accuracy, correctness and completeness of the Information. CBRE does not accept or assume any responsibility or liability, direct or consequential, for the Information or the recipient's reliance upon the Information. The recipient of the Information should take such steps as the recipient may deem necessary to verify the Information prior to placing any reliance upon the Information. The Information may change and any property described in the Information may be withdrawn from the market at any time without notice or obligation to the recipient from CBRE. CBRE and the CBRE logo are the service marks of CBRE Limited and/or its affiliated or related companies in other countries. All other marks displayed on this document are the property of their respective owners. All Rights Reserved. Mapping Sources: Canadian Mapping Services canadamapping@cbre.com; MapPoint, DMTI Spatial, Environics Analytics, Microsoft Bing, Google Earth-