

For Sale or Lease

Nerval on 118th Avenue
Business Condominiums
Office and Retail

**NEW BLOWOUT
LEASE RATE!**

\$12.00 PSF NET

**FOR MAINFLOOR RETAIL/OFFICE
OR 2ND FLOOR OFFICE**

16504 - 118 Avenue
Edmonton, Alberta



Karen Chayka

587 635 2481

kchayka@naiedmonton.com

Property Features

- **NERVAL** development with immediate occupancy
- Located in Edmonton's west end on the main artery of 118th Avenue with immediate access to 170th Street, 178th Street, Yellowhead Freeway, and Anthony Henday Freeway
- Two storey office/retail building with elevator and second floor common area washrooms
- Unit size range from 1,120 sq.ft.± and up to 9,548 sq.ft.±
- Building is sprinklered
- Tilt-up concrete and steel construction with high level of common area improvements and aesthetically pleasing exterior
- Includes one HVAC per unit
- Shaw fibre available
- Pylon signage available

For Sale or Lease
Nerval on 118th Avenue
Office/Retail Condominiums

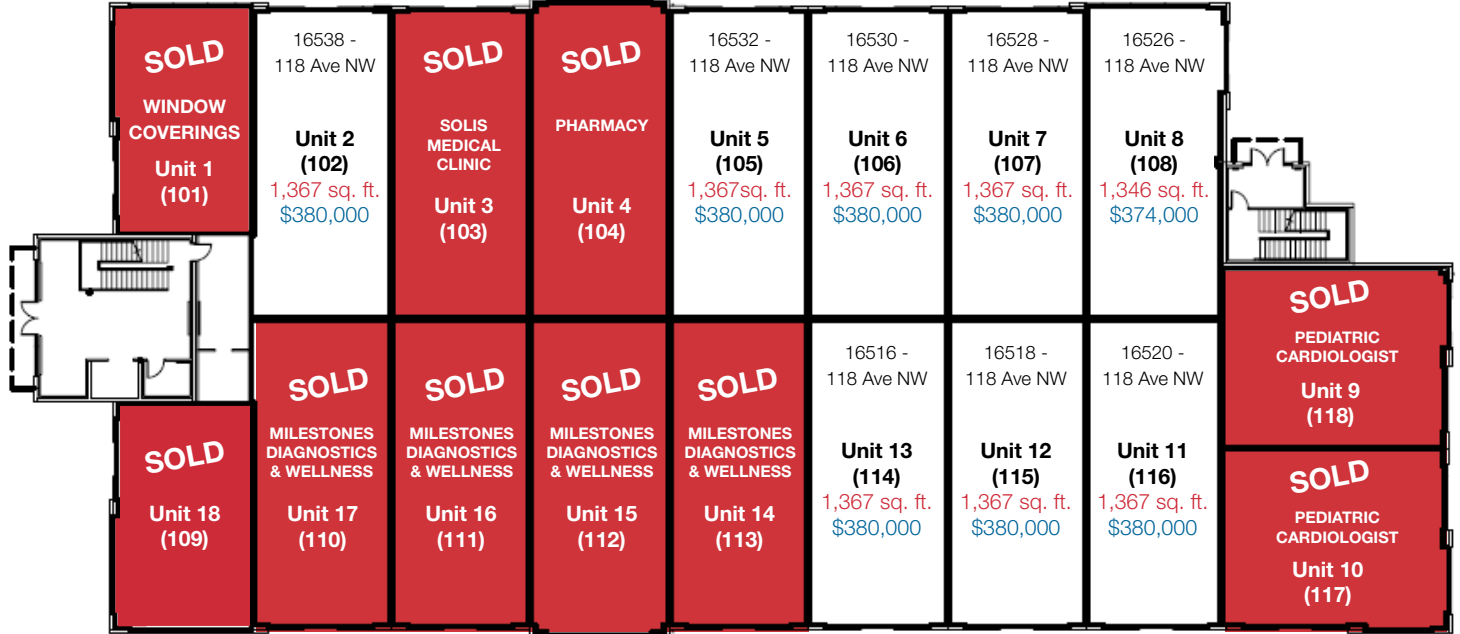
FLOOR PLANS, *SIZES, PURCHASE PRICE

Main Floor Plan - Postal Code: T5V 1C8

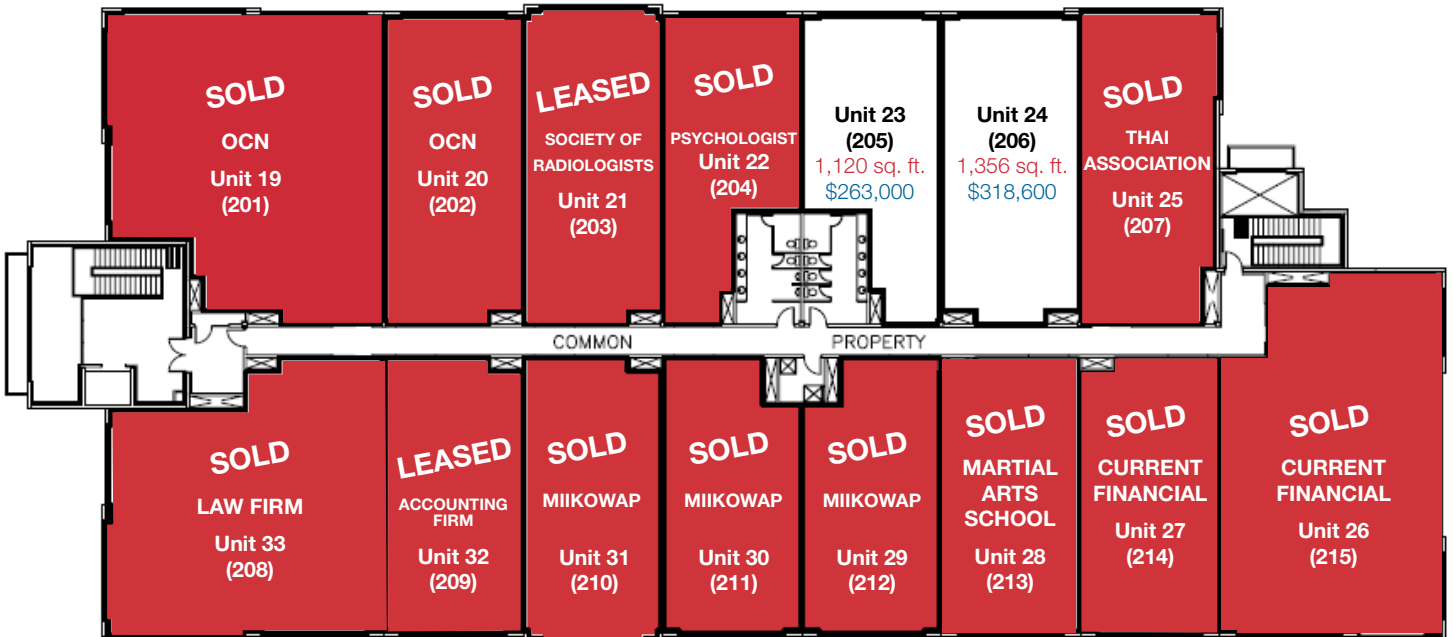
Each main floor unit has its own municipal address as indicated on floor plan

□ Available □ Pending ■ Sold

NORTH



Second Floor Plan - Municipal Address: Suites 201 to 215. 16504 - 118 Avenue NW. Edmonton. AB T5V 1C8



*Note: Square footages taken from Registered Condo Plan.

KC24 5171-I



Main Floor - East Wing



For Sale or Lease
Nerval on 118th Avenue
Office/Retail Condominiums

Main Floor - SE Corner

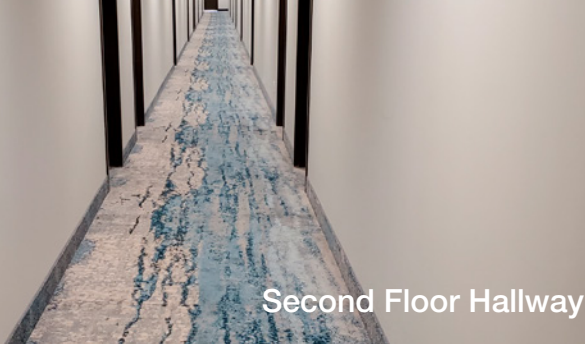
16504 - 118 Avenue, Edmonton, Alberta

Additional Information:

MUNICIPAL ADDRESS	16504 - 118 Avenue, Edmonton AB
LEGAL DESCRIPTION	Condo Plan 152 5451, Units 1 to 33
ZONING	BE (Business Employment Zone) which allows for a wide variety of business uses
PROPERTY TAXES (2024 estimate)	As per City of Edmonton (developed units will see APPROXIMATELY \$6.75 to \$8.75/sq.ft.)
CONDO FEES (2024 estimate)	Estimated at \$3.85/sq.ft./annum - final number to be determined by Condo Management and forthcoming Reserve Fund Study- (includes water, natural gas, building insurance, management, common area janitorial/utilities, snow removal, landscaping and future levy fund). Power is seperately metered to each unit.
CONSTRUCTION	Tilt-up concrete and steel construction with aesthetically pleasing exterior. High level of common area improvements including: LED light fixtures on exterior and in common areas, granite & porcelain tiles in 2nd floor washrooms, carpet in hallways, and porcelain tile entrance ways. Building is sprinklered.
SIGNAGE	Building signage available - (signage criteria and pre-approvals apply) Pylon Signage available at a monthly rental cost - \$200/month/panel
PARKING	160 parking stalls on site (approximate)
CONDO DOCUMENTS	Provided to buyer with Pending Offer to Purchase
FLOOR PLANS, SIZES, & PURCHASE PRICING	Please see page 2
NET LEASE RATE REDUCED	\$20.00/sq.ft./annum main floor; \$16.00/sq.ft./annum second floor \$12.00 sq.ft./annum (main & second floor) -"as is" - undeveloped
OPERATING COSTS (2024 estimate)	Main Floor: \$12.45/sq.ft./annum Second Floor: \$10.55/sq.ft./annum

KC24 5171-I

For Sale or Lease
Nerval on 118th Avenue
Office/Retail Condominiums



Second Floor Hallway



Second Floor SE Corner



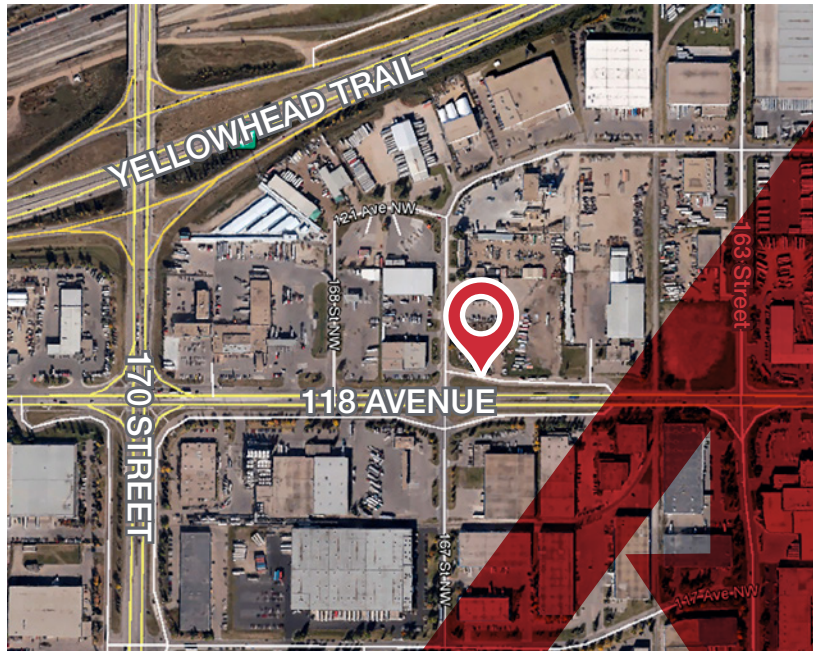
Second Floor East Wing



Second Floor Elevator/Foyer



Second Floor
Common Area Washrooms



KC24 5171-I

NAI Commercial

Karen Chayka 587 635 2481 • kchayka@naiedmonton.com

NAI COMMERCIAL REAL ESTATE INC. | 4601 99 Street NW Edmonton, AB T6E 4Y1 | 780 436 7410 | naiedmonton.com