



Square Feet:

854 - 4,822 SF



Access to Green Space



Direct QEW Access

[View Website](#)

For Lease | 1100 Walkers Line, Burlington

Office space available **for lease**

Welcome to Kamisa Executive Centre

Offering class A office space at the northwest corner of the QEW and Walkers Line in Burlington. This recently constructed building is perfect for tenants seeking an energy efficient opportunity as the latest mechanical and electrical systems have been incorporated to reduce utility costs.

Adam Dauphinee **

Vice President, LEED, AP
+1 416 620 2872
adam.dauphinee@colliers.com

Chris Burans *

Vice President
+1 416 620 2866
chris.burans@colliers.com

Noel Cardy

Sales Representative
+1 416 620 2364
+1 289 927 1252
noel.cardy@colliers.com

Property Overview

Address	1100 Walkers Line, Burlington
Area	Burlington, ON
Location	Located on the north-west corner of Walkers Line and the QEW
Available	Immediately
Lease Type	Head Lease
Condition	Built-out Suites
Parking	Unreserved Surface Parking 3.8 : 1,000 SF Parking Ratio
Rentable Suite Options	Suite 201 & 102 4,822 SF Suite 204 854 SF Suite 401 4,466 SF Suite 503 1,623 SF
Net Rent	\$19.00
Additional Rent	\$ 12.47 PSF
Building Class	Class A

Key Highlights



Direct access to the QEW



Subway restaurant on-site



Surface parking available

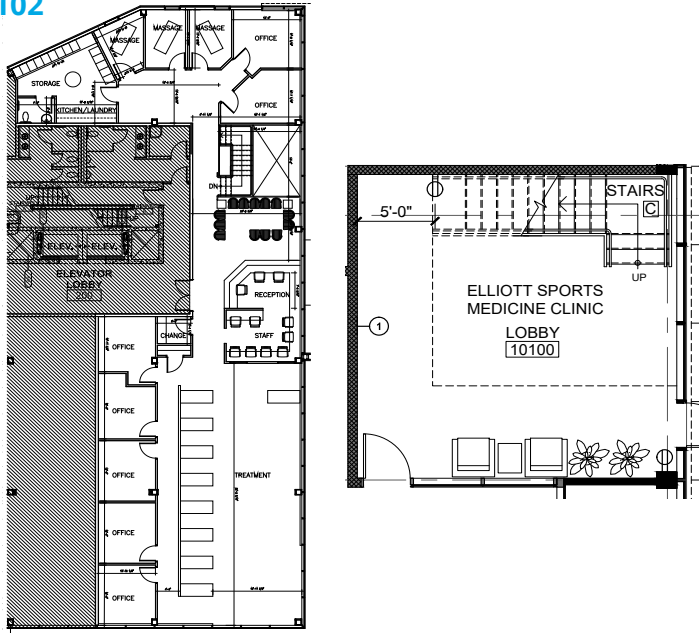


Car charging stations



Floor Plan Overview

Suite 201 & 102

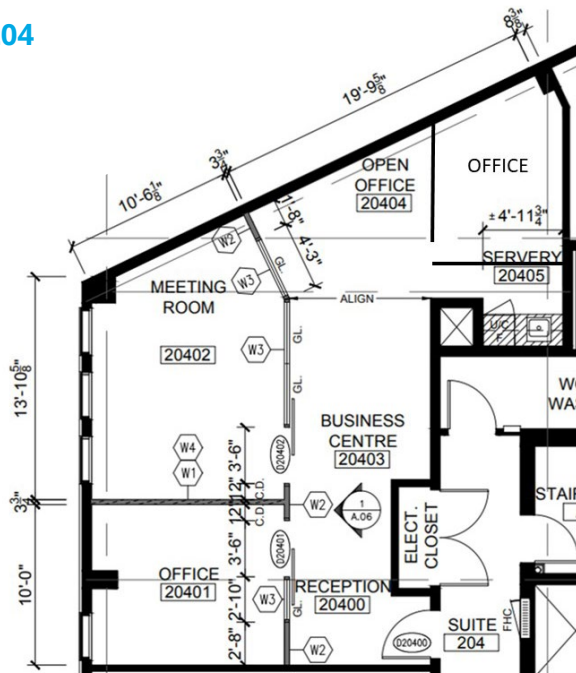


4,822 SF

- Ground + 2nd Floor Space
- Private Offices
- Reception Area
- Treatment Area
- Storage

[View Virtual Tour](#)

Suite 204

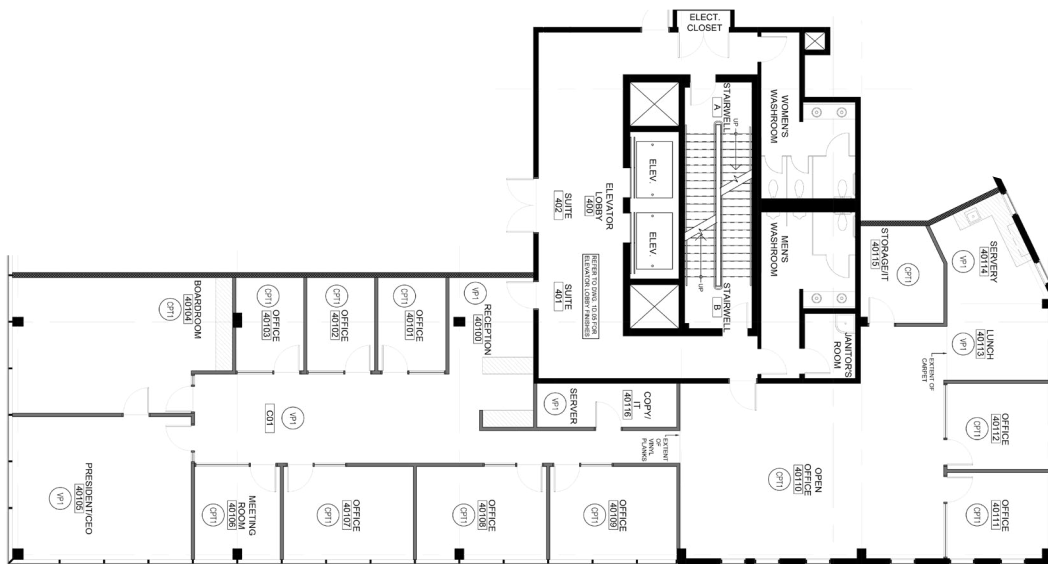


854 SF

- Reception area
- Two private offices
- Meeting room
- Kitchenette

Floor Plan Overview

Suite 401

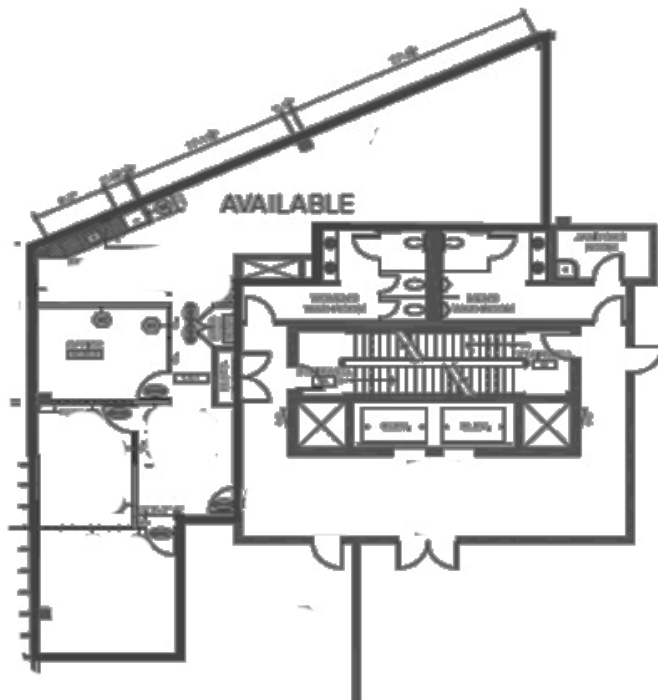


4,466 SF

- 8 private offices
- 1 executive office
- Boardroom
- Reception
- Open work area

[View Virtual Tour](#)

Suite 503

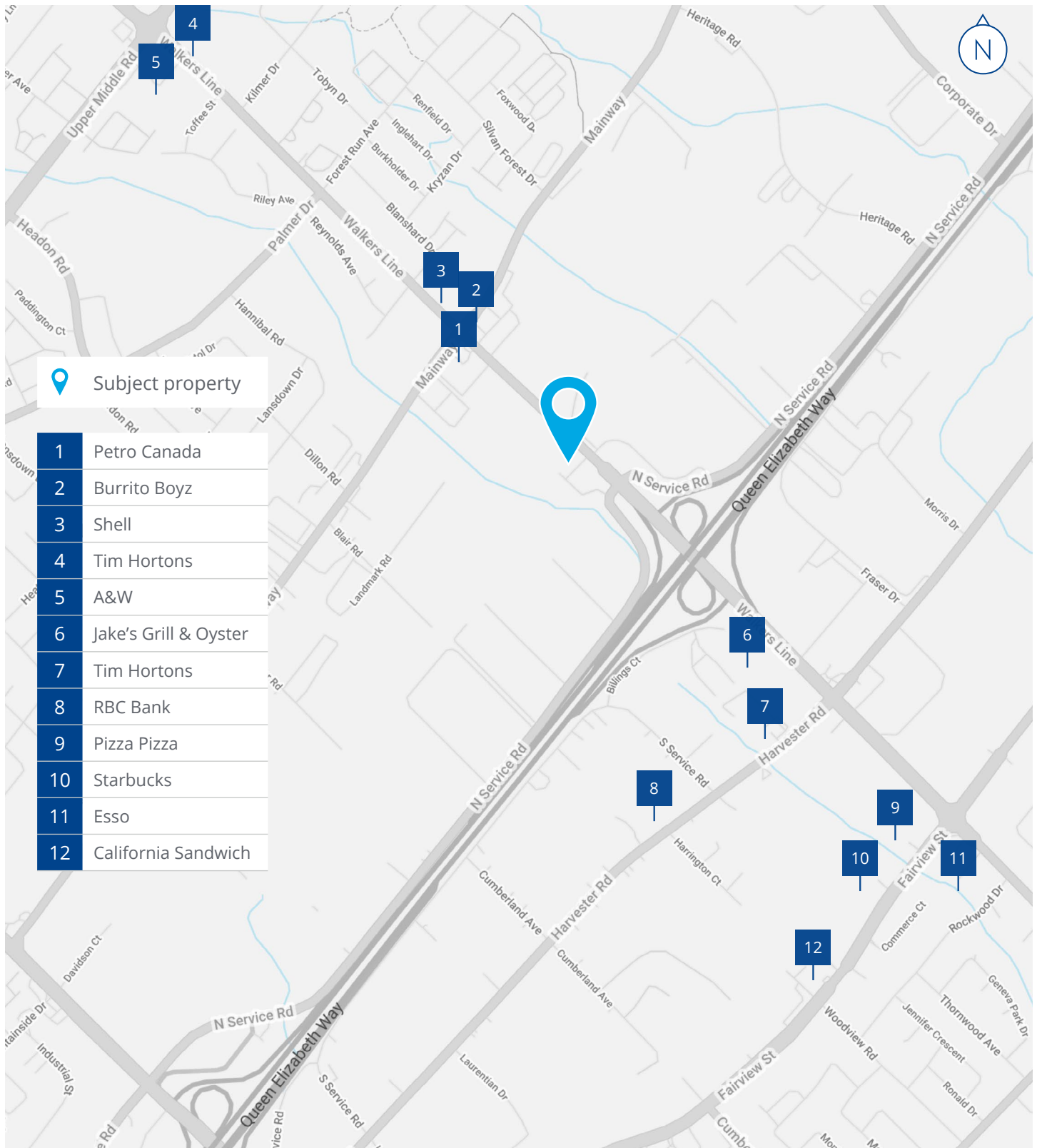


1,623 SF

- Boardroom
- Open work area
- private offices

[View Virtual Tour](#)

Surrounding Amenities





[View Online Listing](#)

1100 Walkers Line, Burlington, ON

Adam Dauphinee **

Vice President, LEED, AP

+1 416 620 2872

+1 416 505 4828

adam.dauphinee@colliers.com

Chris Burans *

Vice President

+1 416 620 2866

+1 416 258 9845

chris.burans@colliers.com

Noel Cardy

Sales Representative

+1 416 620 2364

+1 289 927 1252

noel.cardy@colliers.com

* Sales Representative ** Broker

This document has been prepared by Colliers for advertising and general information only. Colliers makes no guarantees, representations or warranties of any kind, expressed or implied, regarding the information including, but not limited to, warranties of content, accuracy and reliability. Any interested party should undertake their own inquiries as to the accuracy of the information. Colliers excludes unequivocally all inferred or implied terms, conditions and warranties arising out of this document and excludes all liability for loss and damages arising there from. This publication is the copyrighted property of Colliers and/or its licensor(s). Copyright © 2023. All rights reserved. This communication is not intended to cause or induce breach of an existing listing agreement. **Colliers Macaulay Nicolls Inc., Brokerage**