



Plaza 124

HIGH QUALITY PROFESSIONAL OFFICE SPACE
IN EDMONTON'S MOST VIBRANT NEIGHBOURHOOD

10216 - 124 Street
Edmonton, AB
www.cbre.ca

Plaza 124

10216 - 124 Street | Edmonton, AB



Available for Lease

Suite 200	3,396 SF	
Suite 210	3,431 SF	Available July 2024
Suite 225	2,858 SF	
Suite 300	28,434 SF	Available July 2024
Suite 404	5,264 SF	Available July 2024
Suite 405	1,918 SF	Available July 2024
Suite 406	16,865 SF	Available July 2024
Suite 500	25,505 SF	Available July 2024
Suite 604	1,382 SF	
Suite 610	607 SF	

Leasing Details



ASKING NET RENT
\$16.00 - \$18.00 PSF



ADDITIONAL RENT
\$17.07 PSF (2023)



TENANT INDUCEMENTS
Contact Listing Agent



TENANT PARKING
1 stall / 750 sq. ft. (underground)
\$175.00 (unreserved) \$275.00 (reserved)
\$235.00 (tandem)



VISITOR PARKING
Hourly & paid parking available
Electric vehicle charging stations

Building Highlights

- + Fitness centre with shower facilities and storage
- + Pet friendly building
- + Exterior pylon signage available
- + Professional property management with on-site security personnel
- + Walking distance to the river valley
- + Located on public transit routes
- + Restaurants, shopping and services in close proximity



Plaza 124

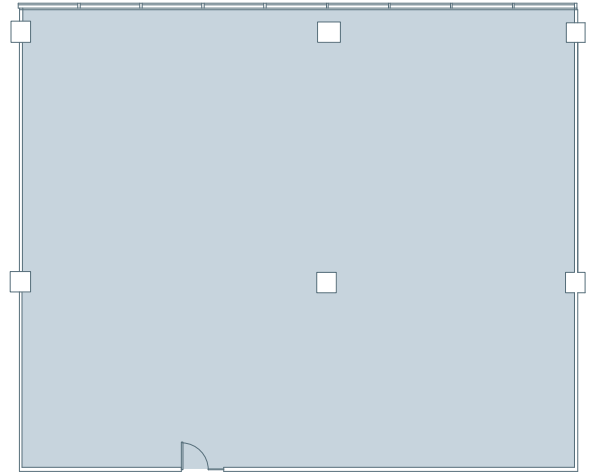
10216 - 124 Street | Edmonton, AB

Suite 200

3,396
square feet

Raw

- + Ready for improvements
- + Prime elevator exposure
- + Great natural light



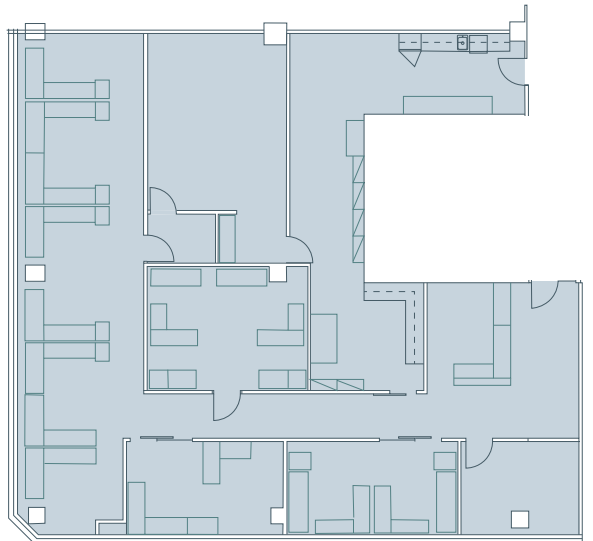
Suite 210

3,431
square feet

Developed

Available July 2024

- + Reception
- + 3 large offices
- + Meeting room
- + Boardroom
- + Open work area
- + Kitchenette & storage



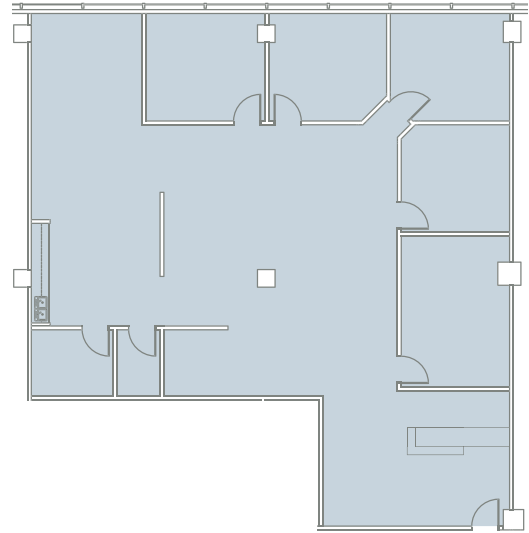
Office Spaces | For Lease

Suite 225

2,858
square feet

Show Suite

- + Reception
- + Offices & open area
- + Meeting room
- + Kitchenette & storage

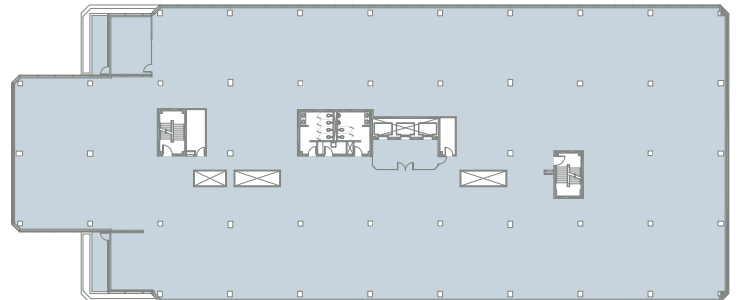


Suite 300

28,434
square feet

Developed

- Available July 2024*
- + Full floor opportunity



Plaza 124

10216 - 124 Street | Edmonton, AB

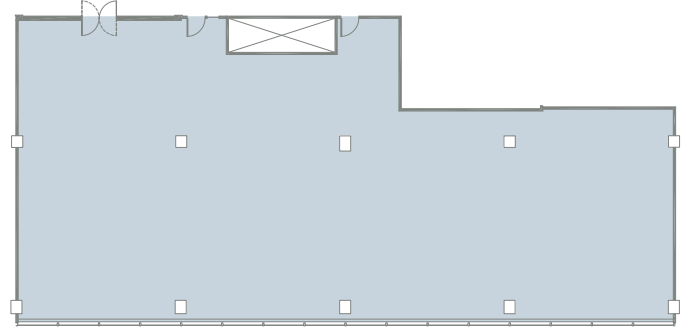
Suite 404

5,264
square feet

Developed

Available July 2024

- + Offices
- + Reception
- + Kitchenette
- + Contiguous to 24,047 SF



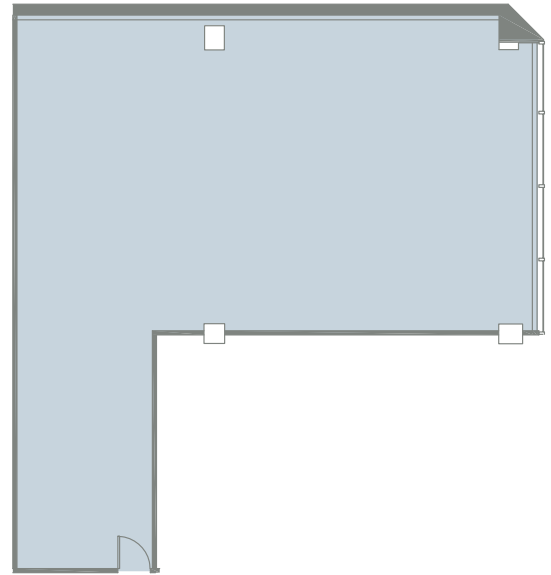
Suite 405

1,918
square feet

Developed

Available July 2024

- + Contiguous to 24,047 SF



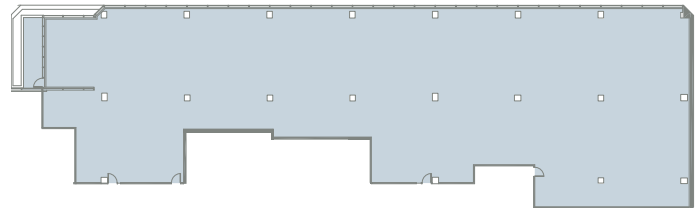
Suite 406

16,865
square feet

Developed

Available July 2024

- + Contiguous to 24,047 SF



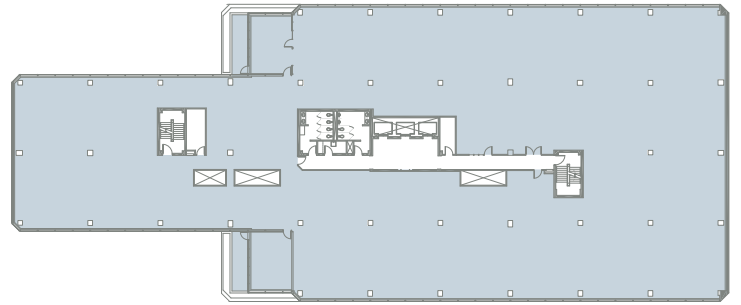
Office Spaces | For Lease

Suite 500

25,505
square feet

Developed

Available July 2024
+ Full floor opportunity

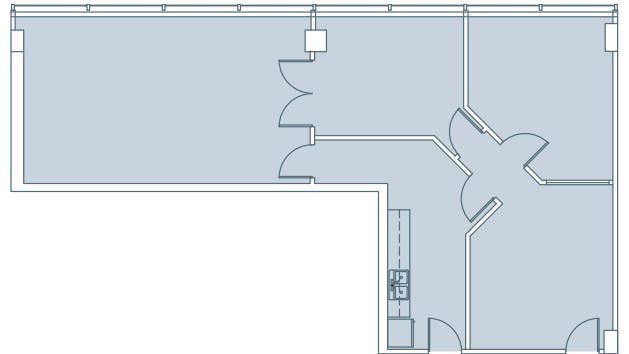


Suite 604

1,382
square feet

Developed

+ Reception
+ Office & meeting room
+ Kitchenette
+ Enclosed open work area

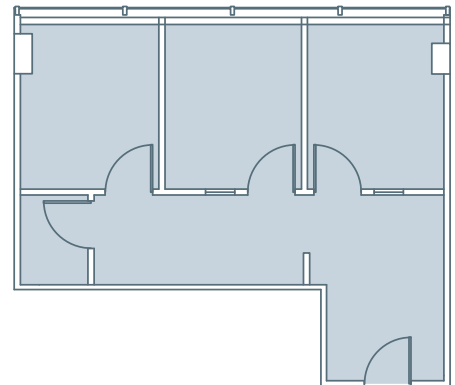


Suite 610

607
square feet

Developed

+ 3 enclosed offices
+ Reception
+ Storage area



Plaza 124

10216 - 124 Street | Edmonton, Alberta



Cafés & Bakeries

- + Bloom Cookie Co.
- + Remedy Café
- + Duchess Bakeshop
- + Destination Donuts
- + Credo Coffee

Shopping & Services

- + The Pampered Puppy
- + Scarpe Diem Shoes
- + Loblaws City Market
- + The Fixx
- + Lightform

Health & Wellness

- + InStep Physio
- + Black Tusk Crossfit
- + Lion's Breath Yoga
- + YEG Cycle
- + Guardian Dental

Arts & Culture

- + Bearclaw Gallery
- + Scott Gallery
- + West End Gallery
- + Lotus Gallery
- + The Front Gallery

Contact Us

Jeff Simkin

Senior Vice President
+1 780 917 4633
jeff.simkin@cbre.com

This disclaimer shall apply to CBRE Limited, and to all divisions of the Corporation ("CBRE"). The information set out herein (the "Information") has not been verified by CBRE, and CBRE does not represent, warrant or guarantee the accuracy, correctness and completeness of the Information. CBRE does not accept or assume any responsibility or liability, direct or consequential, for the Information or the recipient's reliance upon the Information. The recipient of the Information should take such steps as the recipient may deem necessary to verify the Information prior to placing any reliance upon the Information. The Information may change and any property described in the Information may be withdrawn from the market at any time without notice or obligation to the recipient from CBRE.