



18  
Antares Drive  
Ottawa, ON

FOR LEASE

FEATURED BENEFITS

Position your  
business for  
the future.

9,816 SF  
Available

\$16.00  
PSF Net

Accelerating success.



Turnkey office space that can accommodate a variety of users.



Available immediately for quick and easy start up.



Engage your staff with a wide variety of neighbouring amenities.

ASHCROFT

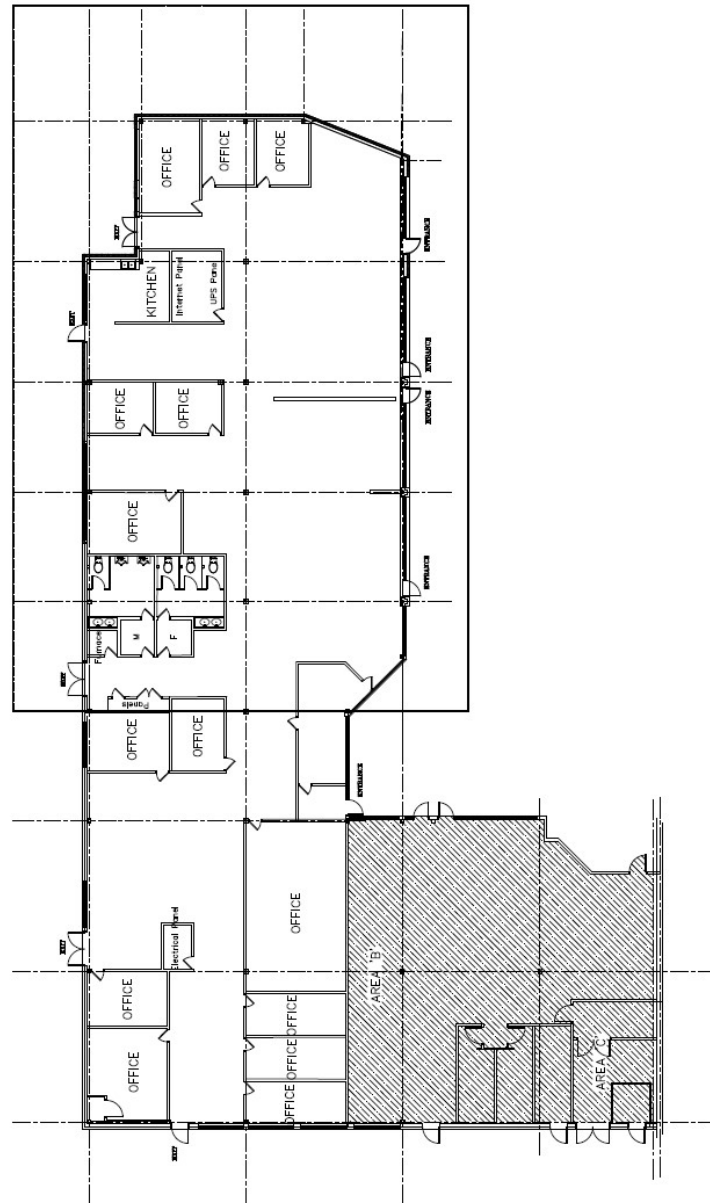


# SPACE HIGHLIGHTS

## COMMENTS

- Located in the Rideau Heights Business Park
- Suite 100 - 9,816 SF (can be demised)
- Open area, thirteen (13) offices, reception area, meeting room, kitchenette and washrooms
- Grade level loading at the back of the building
- Ample free parking on-site
- Building signage available
- Transit at doorstep
- Minutes from the Ottawa International Airport
- Easily accessible from Hunt Club Road
- Lots of amenities nearby
- Available immediately

## FLOOR PLAN



Asking Lease Rate



Additional Rent

**JESSICA WHITING**  
Senior Sales Representative  
P: +1 613 683 2208  
jessica.whiting@colliers.com

**LEE LACOMBE**  
Sales Representative  
P: +1 613 683 2224  
lee.lacombe@colliers.com

340 Albert Street, Suite 930  
Ottawa, ON K1R 7Y6  
P: 613 567 8050  
[www.collierscanada.com/ottawa](http://www.collierscanada.com/ottawa)