

Brand New Freestanding Industrial Building

44,816 Sq. Ft. on 2.37 Acres

65 Goddard Crescent
Cambridge, Ontario
www.cbre.com

Located in the Sought After Boxwood Business Park



Brand New Freestanding Industrial Building

65 Goddard Crescent | Cambridge, Ontario



Property Features

Prestige industrial development with precast concrete and glazed facade available in the Boxwood Business Park, Cambridge, ON. This brand new first class quality standards building provides modern design and a unique freestanding opportunity to owner investors.

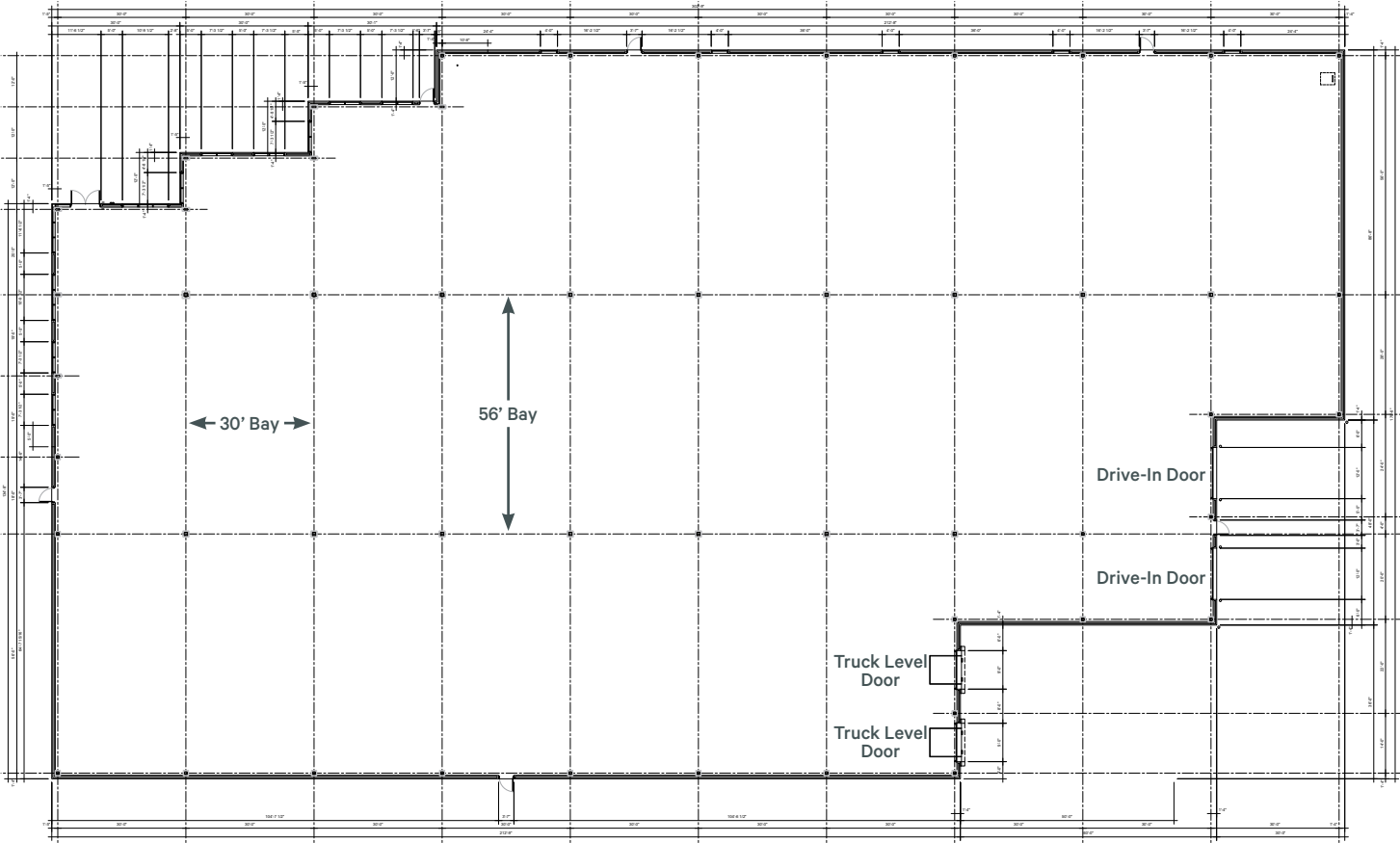
Join nearby employers such as Toyota, Loblaws, Challenger, and Dare Foods in Cambridge located with immediate access to Highways #7/8 and #401.

Flexible M3 zoning permits a wide variety of industrial and service commercial uses. Click below to see permitted uses:

INDUSTRIAL M3 ZONING

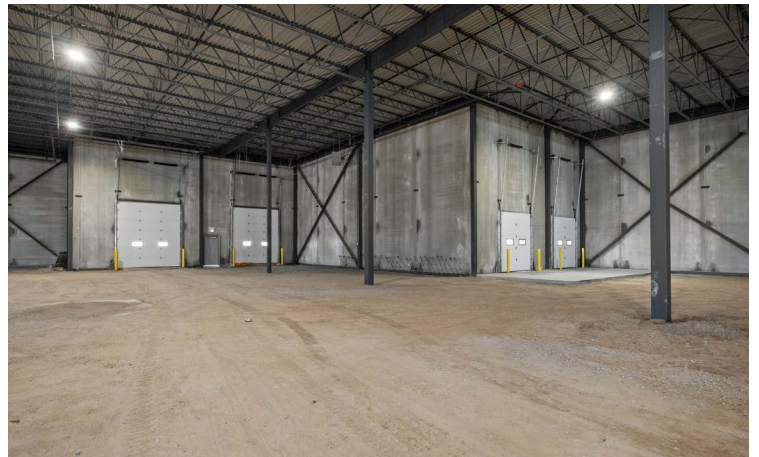
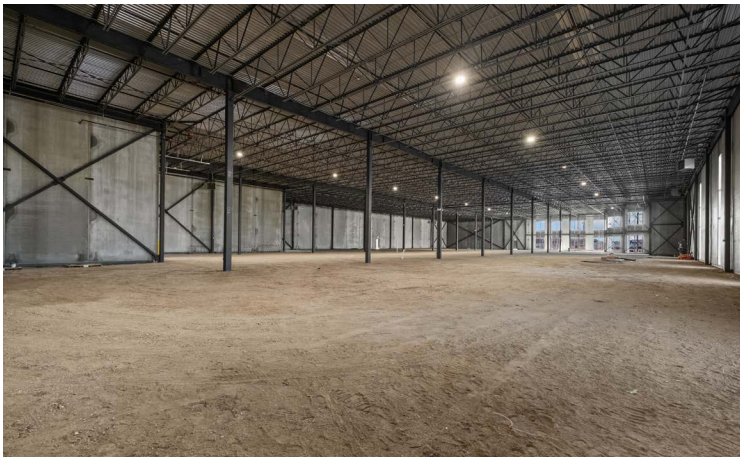
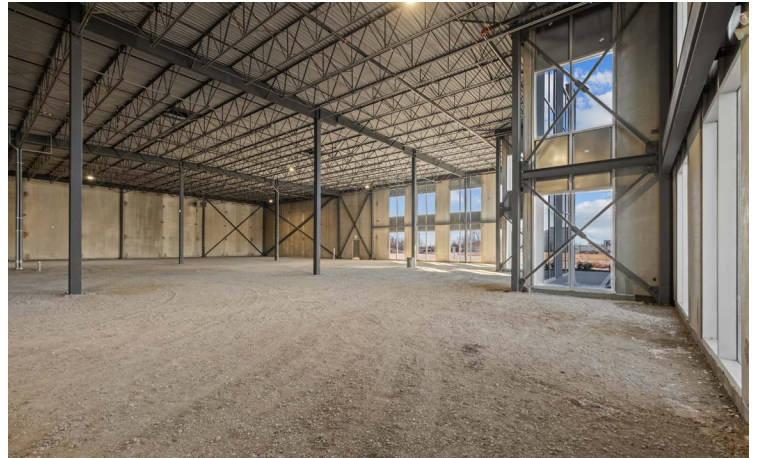
Building Size	44,816 Sq. Ft.
Lot Size	2.37 Ac.
Power	600 V / 800 A
Clear Height	24'
Loading Doors	2 T/L & 2 D/I
Lease Rate	\$16.50 / Sq. Ft. Net
Additional Rent	To Be Confirmed
Asking Price	\$14,565,000

Building Floor Plan



Brand New Freestanding Industrial Building

65 Goddard Crescent | Cambridge, Ontario





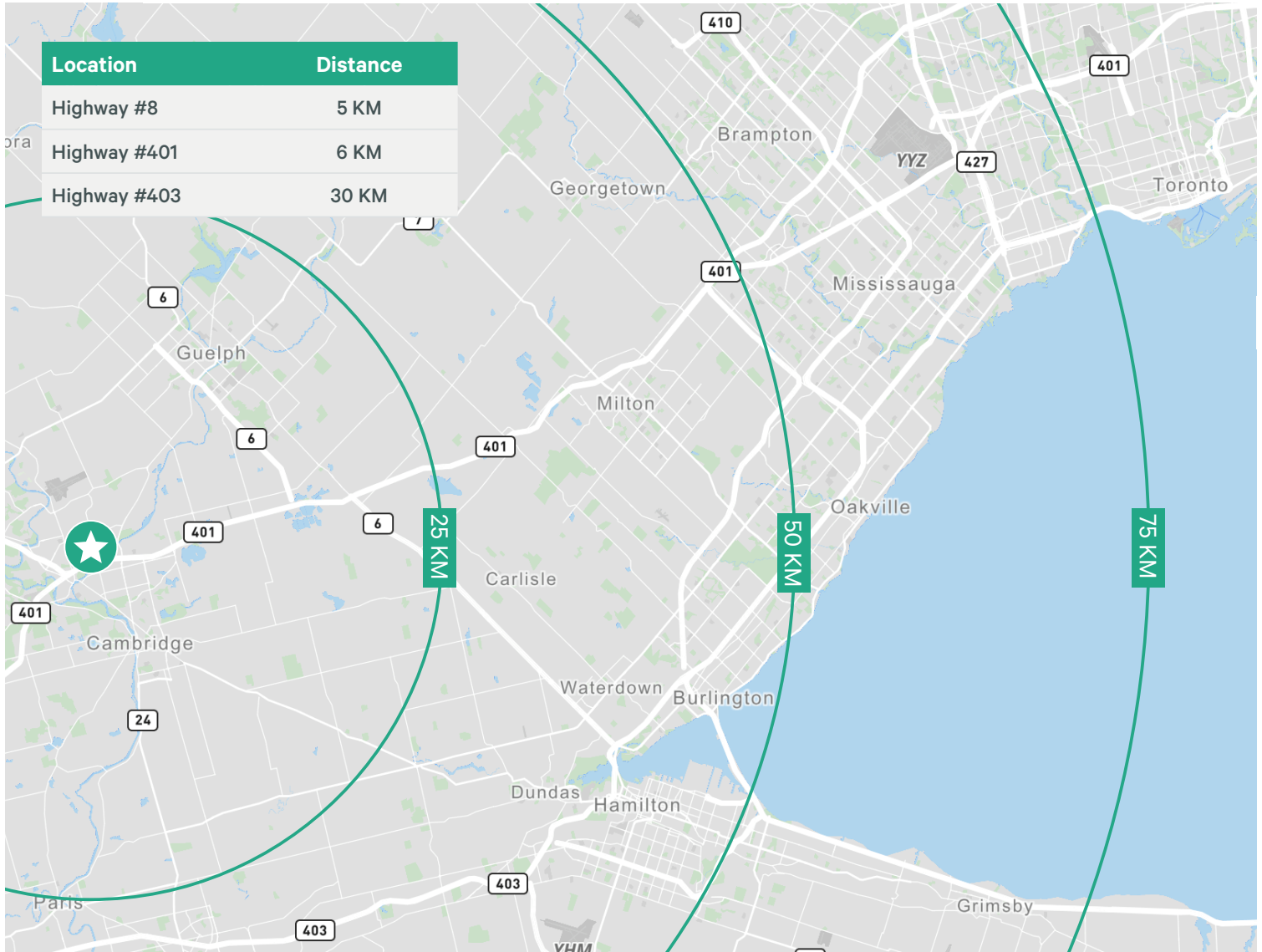
Surrounding Employers

- | | | | |
|---|--------------------------------|----|---------------------------------|
| 1 | Moventas Gears Canada Ltd. | 6 | Dare Foods Limited |
| 2 | Cintas Uniform Services | 7 | Toyota Manufacturing Canada |
| 3 | Conestoga College | 8 | Amazon Cambridge |
| 4 | FedEx | 9 | Penske Truck Rental |
| 5 | Complete Cutting & Coring Inc. | 10 | Hewson Brothers Building Supply |

Brand New Freestanding Industrial Building

65 Goddard Crescent | Cambridge, Ontario

Available



Contact Us

Drew Barootes*

Sales Associate
+1 905 234 0383
drew.barootes@cbre.com

Michael Bellissimo**

Senior Vice President
+1 416 798 6257
michael.bellissimo@cbre.com

Duncan Webster**

Senior Vice President
+1 519 340 2322
duncan.webster@cbre.com

Ken Surmanski*

Sales Associate
+1 519 340 0161
ken.surmanski@cbre.com

Ryan Khan*

Sales Associate
+1 647 505 0764
ryan.khan@cbre.com

CBRE Limited, Real Estate Brokerage | 72 Victoria Street S, Suite 200 | Kitchener, ON | N2G 4Y9 | **Broker *Sales Representative

This disclaimer shall apply to CBRE Limited, and to all divisions of the Corporation ("CBRE"). The information set out herein (the "Information") has not been verified by CBRE, and CBRE does not represent, warrant or guarantee the accuracy, correctness and completeness of the Information. CBRE does not accept or assume any responsibility or liability, direct or consequential, for the Information or the recipient's reliance upon the Information. The recipient of the Information should take such steps as the recipient may deem necessary to verify the Information prior to placing any reliance upon the Information. The Information may change and any property described in the Information may be withdrawn from the market at any time without notice or obligation to the recipient from CBRE. Mapping Sources: Canadian Mapping Services canadamapping@cbre.com; DMTI Spatial, Environics Analytics, Microsoft Bing, Google Earth.