



ONE PARK

Office Strata

in Richmond Town Centre



GRAND LONG



One Park

The one place that has it all.

Live, Work, Shop

One Park by Grand Long is a one-of-a-kind lively community of terraced towers centred around a tranquil private park. This exclusive offering combines the best of live, work, and shop for one unified experience. One Park features 41,656 SF of retail lease opportunities - including a restaurant space and a Sungiven Foods grocery store, 47,106 SF of Class "A" office strata, and three residential towers above.

Located at 8119 Park Road, One Park is steps away from Downtown Richmond at Park Road and Buswell Street. The complex is a block away from No. 3 Road, and it is adjacent to the popular CF Richmond Centre shopping mall and Richmond-Brighouse SkyTrain Station. As Richmond continues to flourish as a top destination for families and businesses, this neighbourhood is rapidly transforming into a vibrant hub with exceptional offices, countless restaurants, and retail options a short walk away. Richmond is known for its diverse selection of businesses and retailers, with a rapidly growing high-tech industry driving the demand for both consumer services and promoting a rise in B2B networks throughout the area.

One Park fuses cutting-edge, highly amenitized office space with proximity to renowned retailers, eateries, rapid transit, and residential communities, providing owners and tenants with the perfect blend of business and leisure.

About Grand Long

Since 1995, Grand Long Holdings Ltd. has transformed and created neighbourhoods that connect people and businesses by specializing in large-scale, mixed-use developments across Canada, Hong Kong and China. Grand Long continues its revitalization mission at the inception of this decade by proudly introducing One Park, a timeless addition to the thriving city of Richmond, BC.



Office Strata

Own your office in the heart of Richmond.

Design and create a space that will cater to your business' unique needs. One Park's Class "A" office premises features four levels of efficient, highly amenitized space.

Office Highlights



Exclusive Amenities

Finished exclusive amenity areas on level 4 for office owners.



Private Patios

Enjoy some fresh air and sunshine. Many units feature a private patio.



Elevators

2 dedicated high-speed passenger elevators servicing office levels 4 - 7.



Washrooms

Men's and women's common washrooms fully furnished on each floor.



Common Areas

Finished lobby and elevator corridors on each floor.



Parking

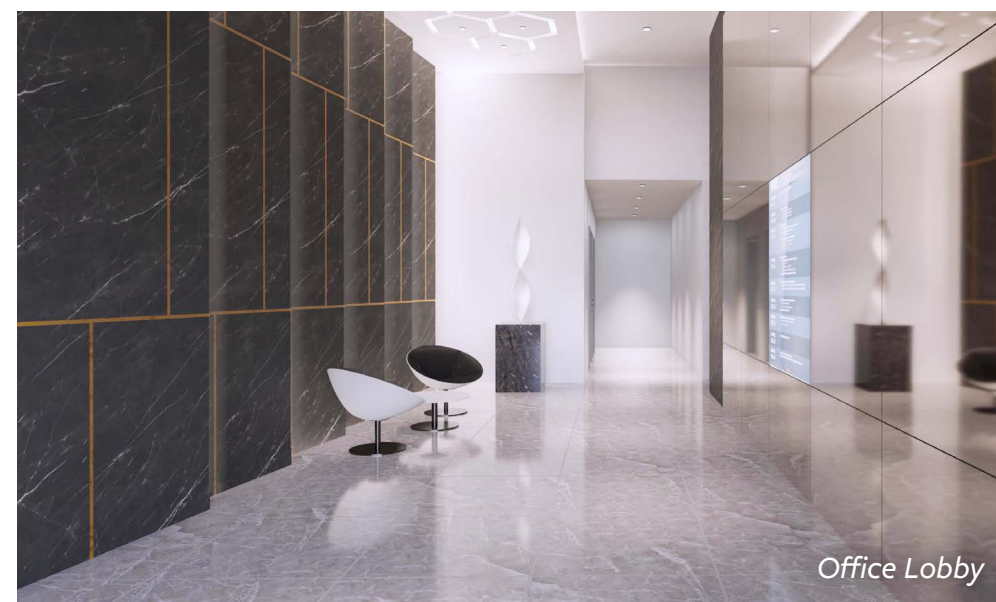
Abundant owner and visitor parking.

Available Area

Level	Area	Units From
Level 5	14,253 SF	508 SF
Level 6	10,946 SF	451 SF
Level 7	10,380 SF	451 SF
Total	47,106 SF	


Office Details


Average Floor Plate	11,777 SF
Ceiling Height	11' floor to ceiling clear
HVAC	1 ton of cooling per 450 SF
Electrical	15 watts per SF
Floor Load Capacity	50lbs per SF live load and 35lbs per SF superimposed deadload
Zoning	ZMU39 (General Office, Education, Government Services, Health Services, Religious Assembly, Broadcasting Studio, amongst others)
Parking	Min 1 stall per strata lot - 82 stalls total
Delivery Date	Q3 2023




Office Amenities


Exclusive Office Only Amenities

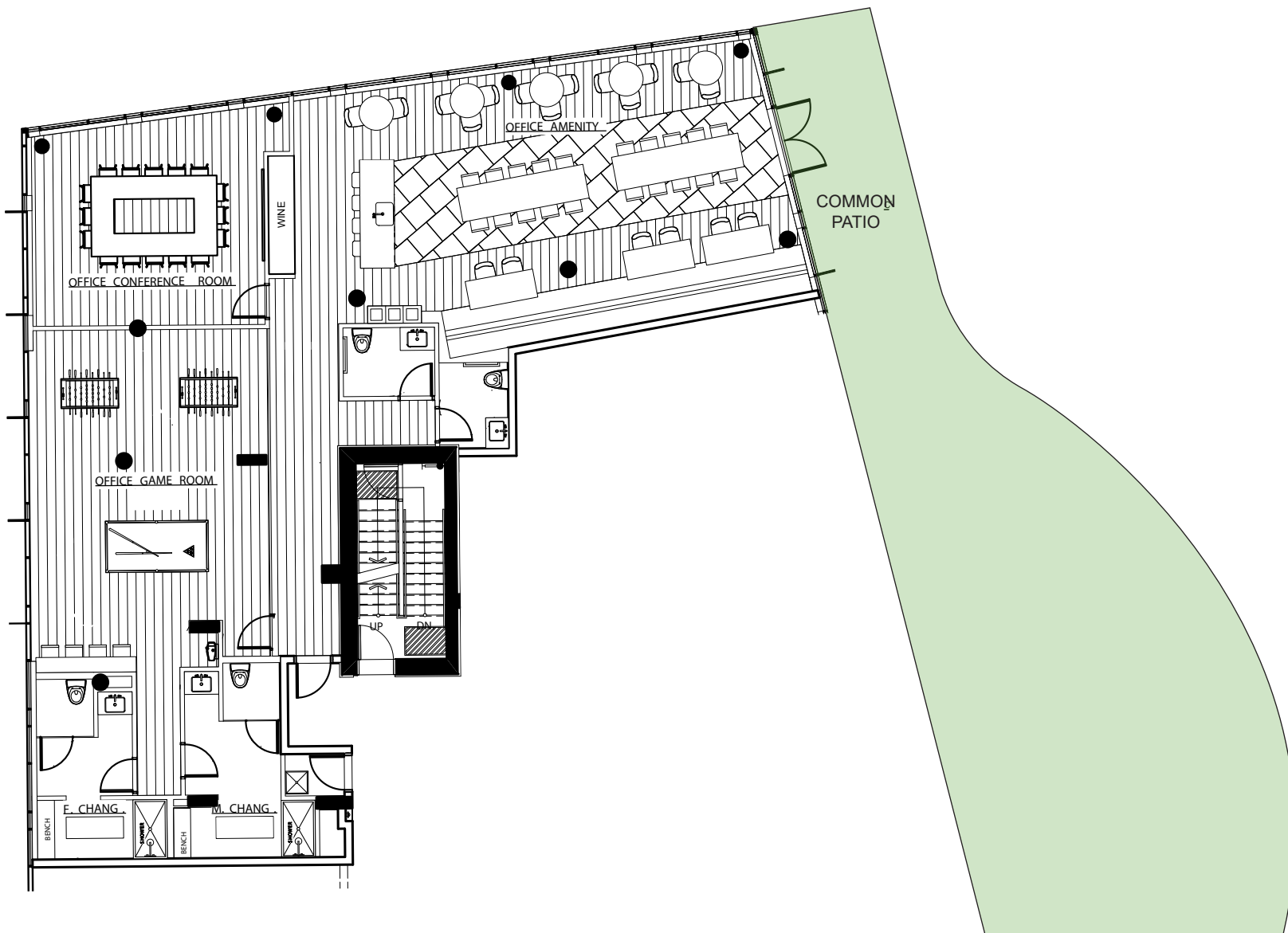
 **Games Room**
Have some fun and get competitive with your colleagues in One Park's games room.

 **Lounge with Wet Bar**
Host company socials and events in One Park's shared lounge furnished with a wet bar.

 **Meeting Room**
Collaborate in One Park's private meeting room exclusively available for office owners.

 **Common Patio**
Unwind with nature, sunshine, and city views at One Park's common patio.

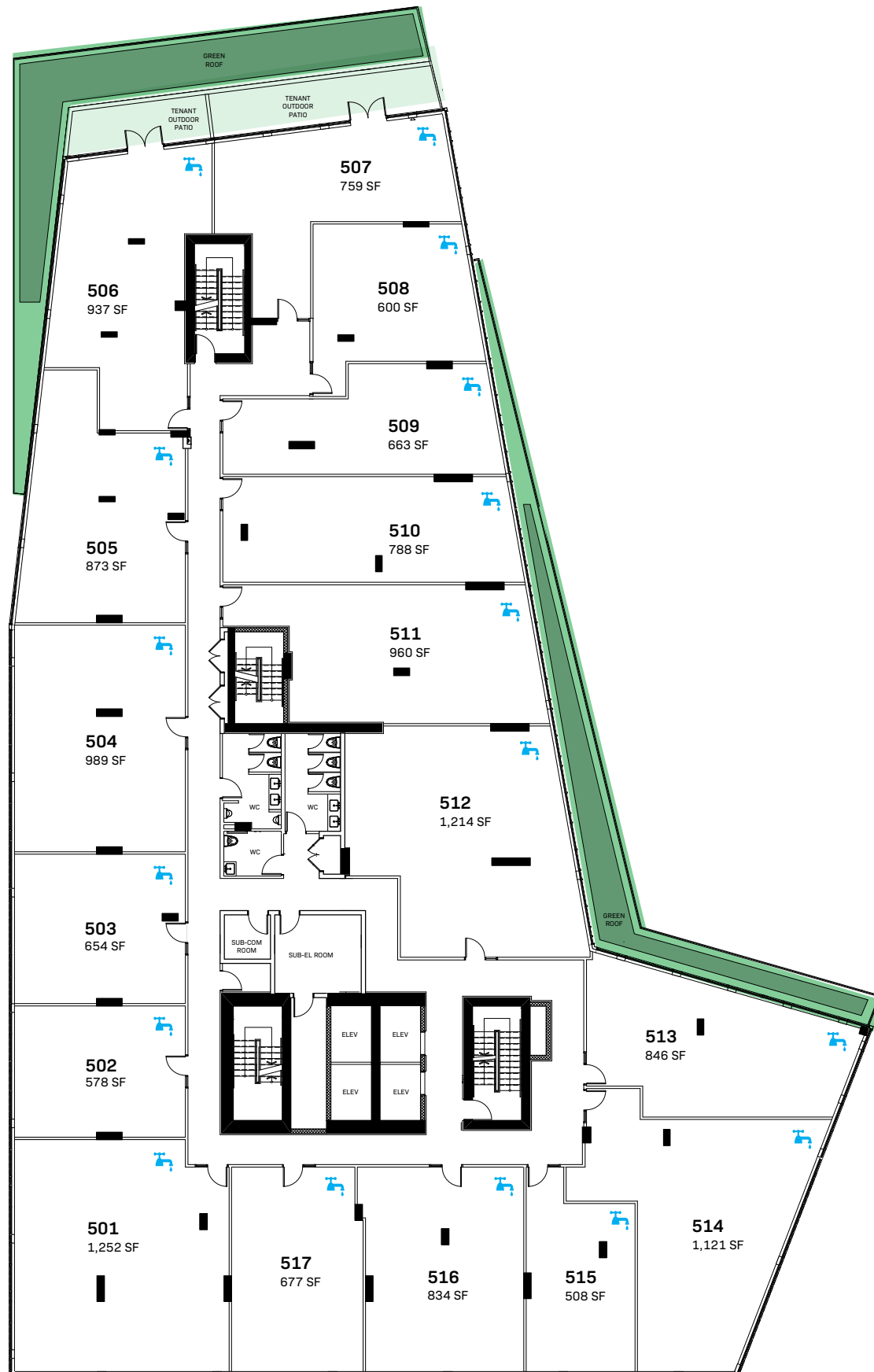
 **End-of-Trip Facilities**
Bike to work with ease. The complex's end-of-trip facilities include showers, lockers, and bike storage.



Exclusive amenity areas on level 4 for office owners.

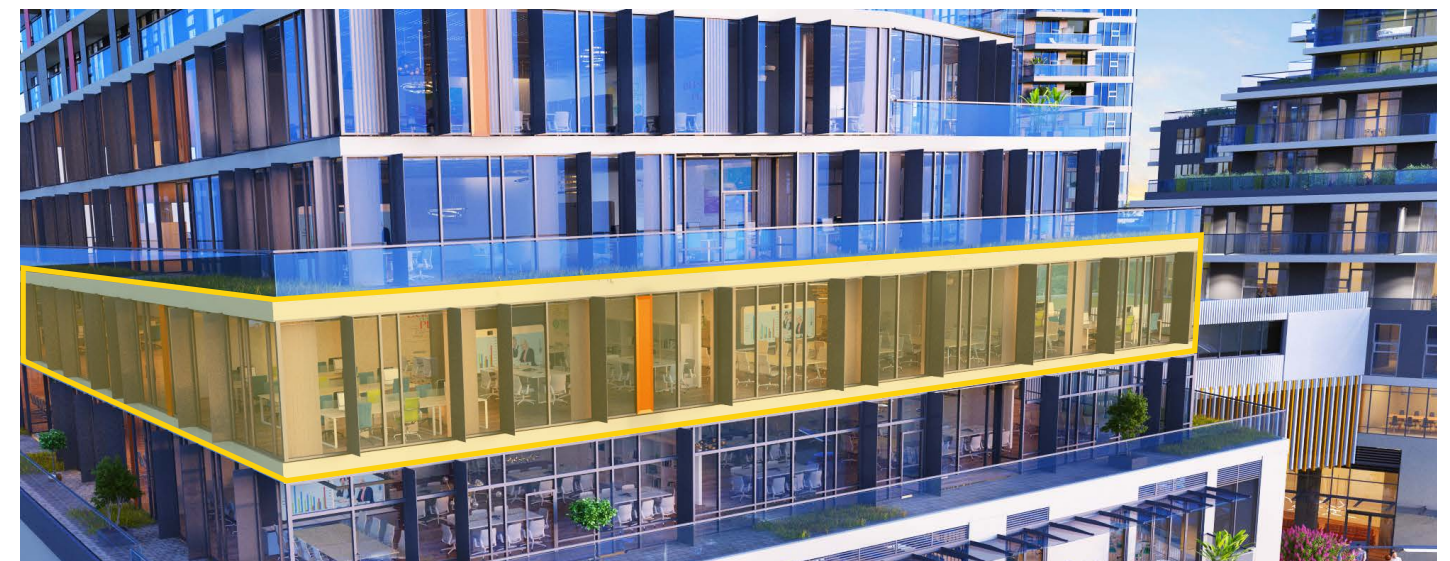
Office Strata

Level 5 Plans | 14,253 SF



Unit	Area	Patio	Parking	Plumbing Rough Ins
501	1,252	-	2	Yes
502	578	-	1	Yes
503	654	-	1	Yes
504	989	-	2	Yes
505	873	-	1	Yes
506	937	170 SF	2	Yes
507	759	274 SF	1	Yes
508	600	-	1	Yes
509	663	-	1	Yes
510	788	-	1	Yes
511	960	-	2	Yes
512	1,214	-	2	Yes
513	846	-	1	Yes
514	1,121	-	2	Yes
515	508	-	1	Yes
516	834	-	1	Yes

Private patio
 Green roof
 Sold/Under Contract



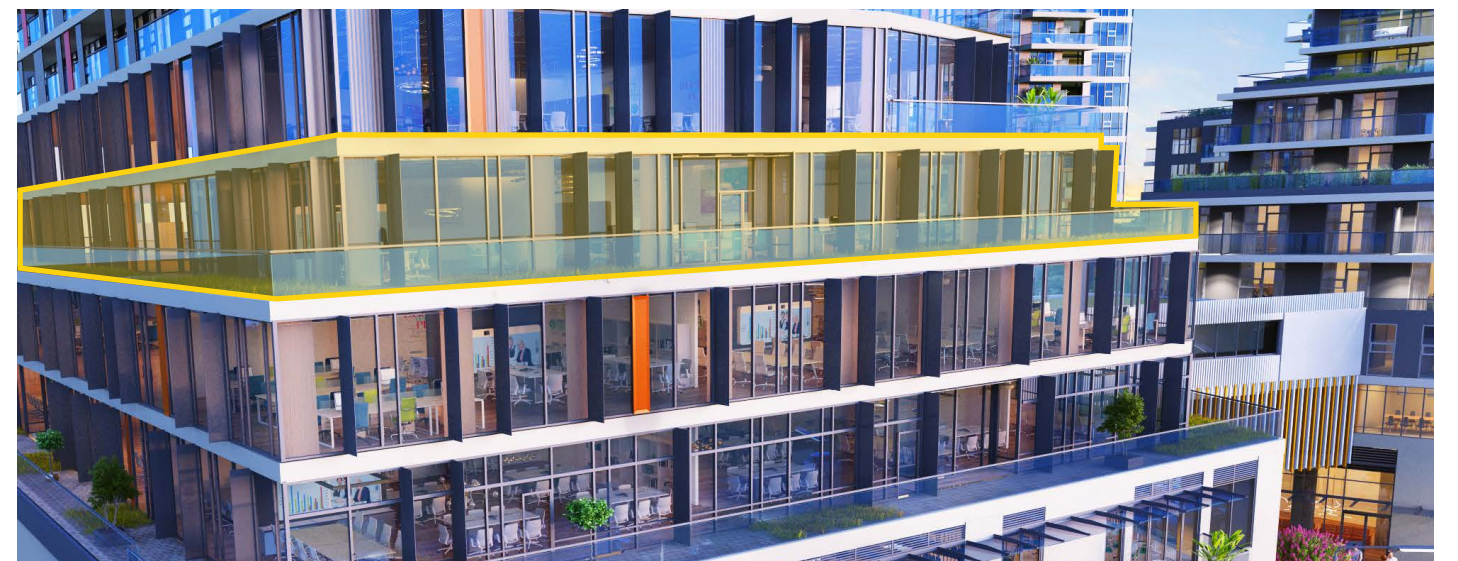
Office Strata

Level 6 Plans | 10,946 SF



Unit	Area	Patio	Parking	Plumbing Rough Ins
601	1,061	219 SF	2	Yes
602	451	-	1	Yes
603	681	-	1	Yes
604	559	-	1	Yes
605	662	186 SF	1	Yes
606	957	253 SF	2	Yes
607	592	-	1	Yes
608	732	-	1	Yes
609	851	-	1	Yes
610	987	-	2	Yes
611	1,071	270 SF	2	Yes
612	954	265 SF	2	Yes
613	694	-	1	Yes
614	694	85 SF	1	Yes

Private patio
 Green roof
 Under Contract



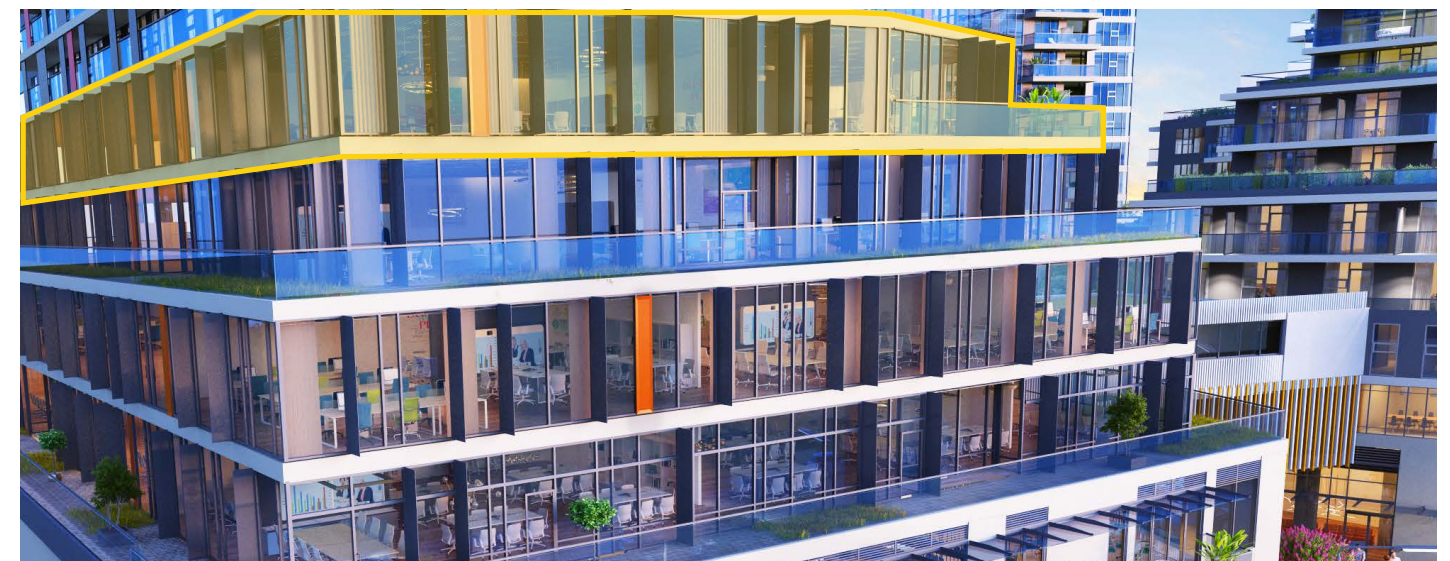
Office Strata

Level 7 Plans | 10,380 SF



Unit	Area	Patio	Parking	Plumbing Rough Ins
701	1,061	-	2	Yes
702	451	-	1	Yes
703	681	-	1	Yes
704	559	-	1	Yes
705	662	-	1	Yes
706	957	-	2	Yes
707	592	-	1	Yes
708	732	-	1	Yes
709	851	-	1	Yes
710	992	-	2	Yes
711	823	226 SF	1	Yes
712	639	211 SF	1	Yes
713	686	-	1	Yes
714	694	-	1	Yes

Private patio
 Green roof
 Sold/Under Contract





Work & Shop in one neighbourhood.

One Park is situated in the heart of Richmond at the intersection of Park and Buswell. The development's unbeatable location is a brief 7-minute walk to the well-travelled Canada Line at Richmond-Brighouse SkyTrain Station – linking commuters to Downtown Vancouver in just 30 minutes. One Park's prime location is also walking distance to some of Richmond's most popular local amenities such as CF Richmond Centre (3 min walk), Richmond Public Market (9 min walk), Richmond City Hall (4 min walk), Richmond Public Library (9 min walk), and various other notable retailers and services.




Food & Retail

- BMO Bank of Montreal
- Cactus Club
- CF Richmond Centre
- Freshslice Pizza
- Gong Cha
- HSBC Bank
- John 3:16
- Lansdowne Centre
- London Drugs
- McDonald's
- Pokey Okey
- PriceSmart Foods
- RBC Royal Bank
- Richmond Public Market
- Shoppers Drug Mart
- Starbucks
- T&T Supermarket
- TD Bank
- Tiger Sugar
- White Spot

Local Amenities

- Garden City Park Lagoon
- Minoru Aquatic Centre
- Minoru Park
- Richmond City Hall
- Richmond Hospital
- Richmond Public Library

Walk Score

-  76 Excellent Transit
-  95 Biker's Paradise
-  92 Walker's Paradise

Contact Us

Adrian Beruschi

Senior Vice President, Retail
Personal Real Estate Corporation
+1 (604) 662-5138
adrian.beruschi@cbre.com

Luke Gibson

Senior Vice President, Office
Personal Real Estate Corporation
+1 (604) 662-5142
luke.gibson@cbre.com

Chloe Hamelin

Associate, Retail
+1 (604) 662-5166
chloe.hamelin@cbre.com



This disclaimer shall apply to CBRE Limited, Real Estate Brokerage, and to all other divisions of the Corporation; to include all employees and independent contractors ("CBRE"). The information set out herein, including, without limitation, any projections, images, opinions, assumptions and estimates obtained from third parties (the "Information") has not been verified by CBRE, and CBRE does not represent, warrant or guarantee the accuracy, correctness and completeness of the Information. CBRE does not accept or assume any responsibility or liability, direct or consequential, for the Information or the recipient's reliance upon the Information. The recipient of the Information should take such steps as the recipient may deem necessary to verify the Information prior to placing any reliance upon the Information. The Information may change and any property described in the Information may be withdrawn from the market at any time without notice or obligation to the recipient from CBRE. CBRE and the CBRE logo are the service marks of CBRE Limited and/or its affiliated or related companies in other countries. All other marks displayed on this document are the property of their respective owners. All Rights Reserved.

