

Letourneau Centre

RETAIL | INDUSTRIAL | OFFICE

4600 99 STREET NW | EDMONTON AB



FOR LEASE

DAVID SABO

Senior Associate
587 635 2482
dsabo@naiedmonton.com

DREW JOSLIN

Associate
780 540 9100
djoslin@naiedmonton.com

RYAN BROWN

Partner
587 635 2486
rbrown@naiedmonton.com

KEVIN MOCKFORD

Senior Associate
587 635 2484
kmockford@naiedmonton.com

dream 

NAICommercial

Property Highlights

- Ability to accommodate a wide variety of users with retail, industrial and office space available
- Size options available from 1,347 to 16,401 sq.ft.±
- High parking ratio
- Exposure to 99th Street
- Multiple signage opportunities available
- Located in one of the principle commercial nodes in Edmonton with great access to Whitemud, Highway 2, Calgary Trail & Gateway Blvd., and Anthony Henday Drive
- Warehouse loading available
- All utilities included in rent

IDEAL FOR



RESTAURANT



MEDICAL



PROFESSIONAL
OFFICE

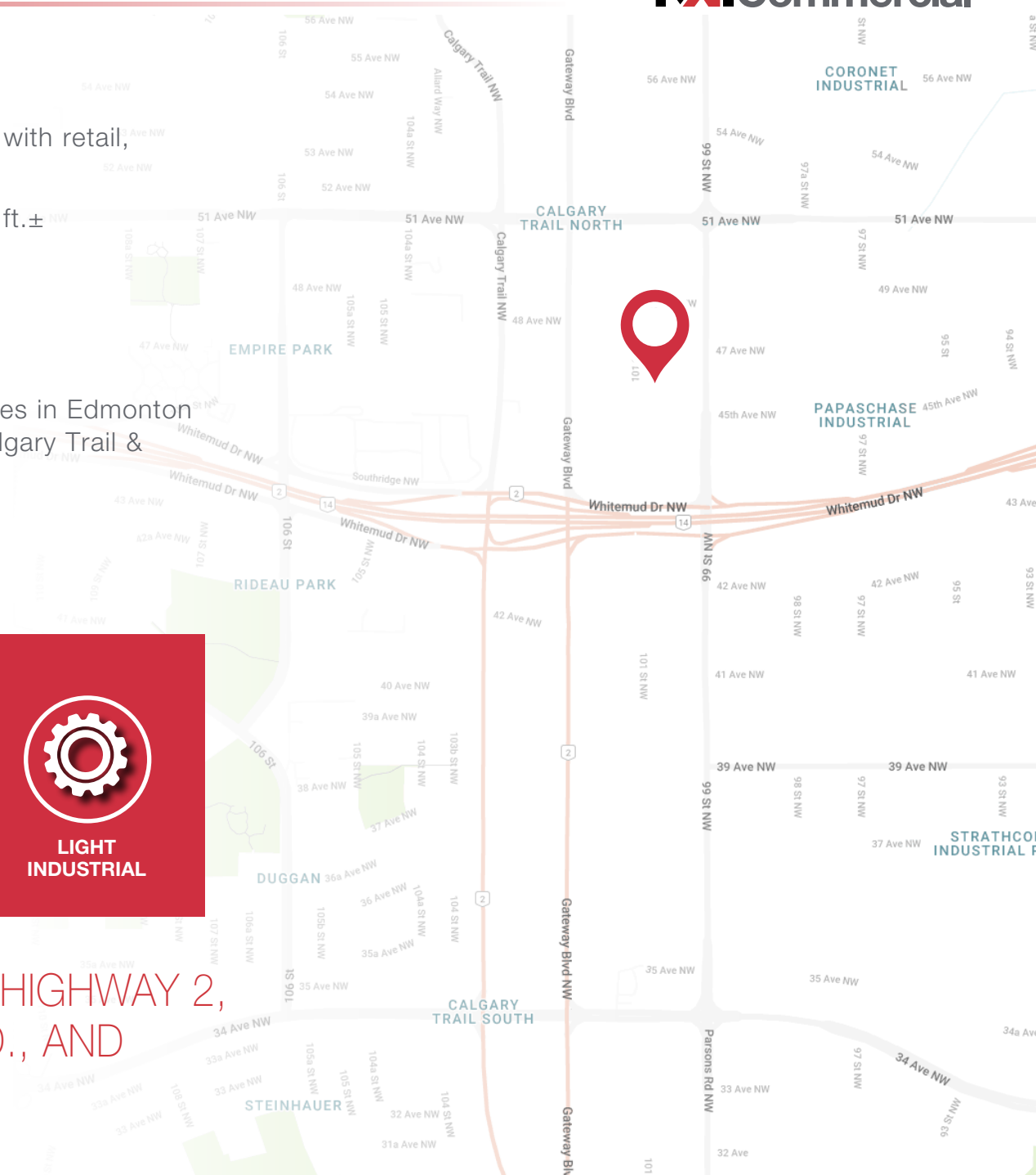


RETAIL



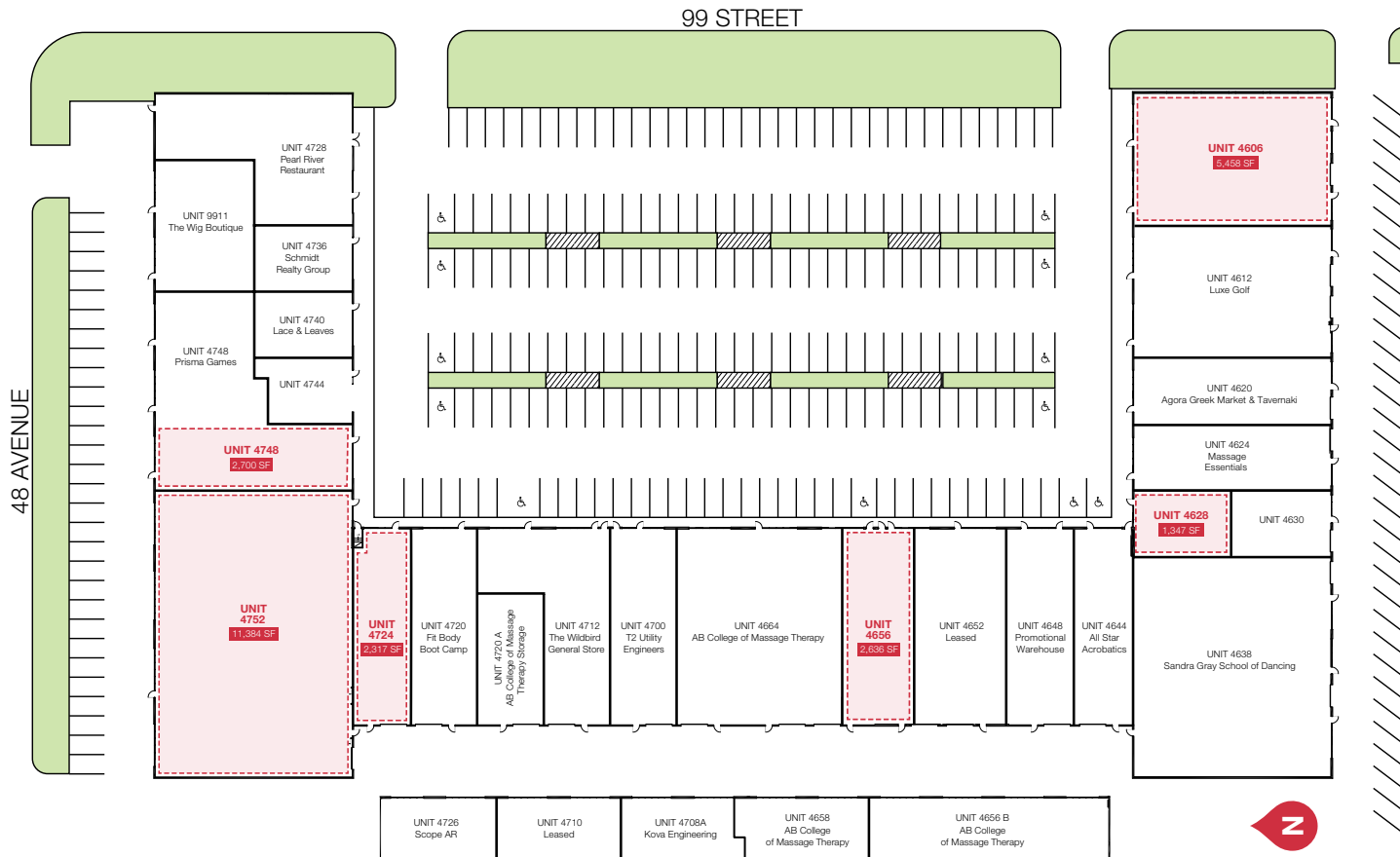
LIGHT
INDUSTRIAL

GREAT ACCESS TO WHITEMUD, HIGHWAY 2,
CALGARY TRAIL /GATEWAY BLVD., AND
ANTHONY HENDAY DRIVE



Additional Information

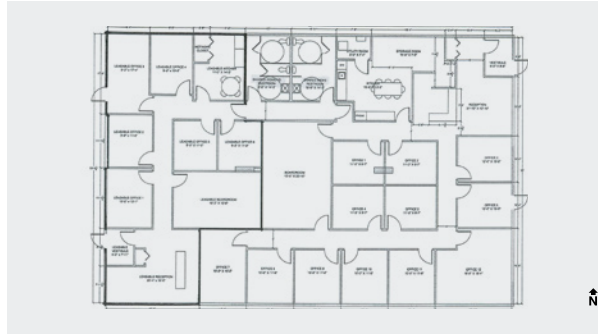
LEGAL DESCRIPTION	Plan 9924302, Block 1, Lot 10	NET RENTAL RATE	Market
ZONING	Business Employment (BE)	OPERATING COSTS	\$11.70/sq.ft./annum (2024 estimate) Includes the Tenant's proportionate share of Property Tax, Common Area Maintenance, Building Insurance, Power, Water, and Gas (plus 4% management fee)
PARKING	2.8 stalls/1,000 sq.ft. (Scramble)		
TI ALLOWANCE	Negotiable		



- 22,000 VPD
99 STREET N OF 44 AVENUE
- 159,884
DAYTIME POPULATION
- 2.7%
ANNUAL GROWTH 2023 - 2033
- 100,285 EMPLOYEES 7,540 BUSINESSES
- \$5.01B
TOTAL CONSUMER SPENDING

2023 COSTAR DEMOGRAPHICS WITHIN 5KM RADIUS

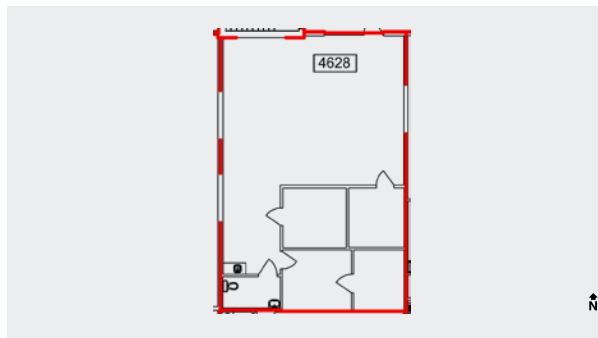
SUITE	AREA
4606	5,458 sq.ft.
4628	1,347 sq.ft.
4656	2,636 sq.ft.
4724	2,317 sq.ft.
4748	2,700 sq.ft.
4752	11,384 sq.ft.



UNIT 4606 - 5,458 SF±

- Built out office space, potential for retail opportunity
- Great exposure to 99th Street
- End cap

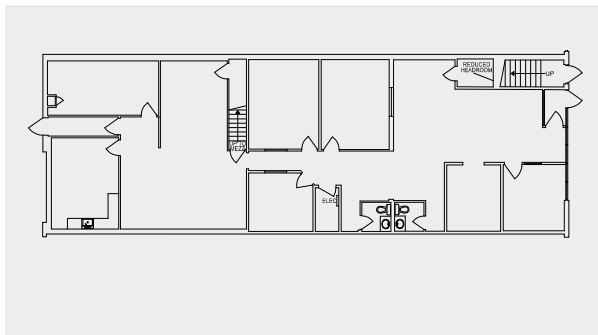
AVAILABLE



UNIT 4628 - 1,347 SF±

- Developed main floor show room with office and storage

AVAILABLE

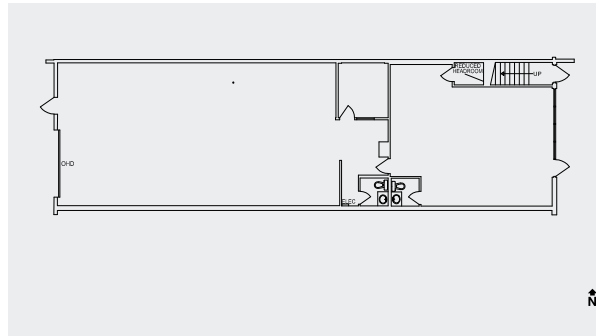


UNIT 4656 - 2,636 SF±

- Bonus mezzanine space
- One 10'x12' grade loading door
- Power TBC
- Ability to reconstruct floor plan to suit tenants needs

AVAILABLE



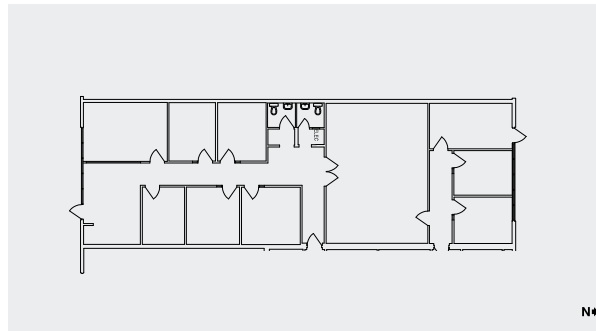


UNIT 4724 - 2,317 SF±

- Open showroom office and balance warehouse
- One 10'x12' grade loading door
- Power TBC

N

AVAILABLE

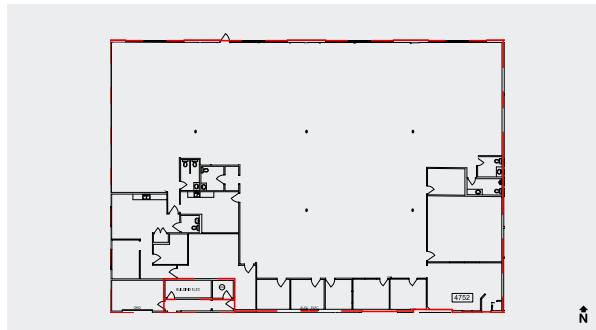


UNIT 4748 - 2,700 SF±

- Developed main floor office
- Open bullpen with skylights
- Exposure to southbound traffic on 99th Street

N

AVAILABLE



UNIT 4752 - 11,384 SF±

- Ideal for office, retail or light industrial
- Skylights
- Power TBC
- Contiguous with units 4724 and 4748. Size options include 13,701 SF±, 14,084 SF±, or 16,401 SF±

N

AVAILABLE