



Click Here for
Video Tour

5300 Satellite Drive, Mississauga

144,180 SF Prestige Industrial Building

Albert Maierhofer, EVP*
905.247.9232
amaierhofer@lennard.com

Brian Lynett, Partner*
905.247.9222
blynett@lennard.com

Jim O'Reilly, Partner*
905.247.9230
joreilly@lennard.com

Occupancy: Q2 2024



A Last
Mile
Location

Lennard:

602-350 Burnhamthorpe Road W, Mississauga
905.625.5020 • lennard.com

*Sales Representative



5300 Satellite Drive



A prestige industrial facility of 144,180 SF located in the Airport Corporate Centre, offering great access to all of the 400 Series Highways.



Area Available (TBD)

Ground Floor Office: 6,215 SF
2nd Floor Office: 18,447 SF
Industrial Area: 119,518 SF
Total Building Area: **144,180 SF**



Net Rent

\$18.00 PSF (escalations required)

Property Taxes (2024 Est.)

\$1.92 PSF per annum



Warehouse

30'-5"

Typical Bay Size

39'8" x 35'8"



Shipping

9TL / 2DI (Electrically Operated Levelers)



Power

600 Volts/800 amps (3 phase)



Availability

Q2 2024

Property Highlights

- Great access to Highways 401, 427, 409, 407, QEW
- Industrial area includes 28,951 SF of clean rooms which are climate controlled
- 17,216 SF upper mezzanine area (not included in building SF)
- Offices have a hydraulic elevator to 2nd floor
- Warehouse lighting is on zoned motion sensors
- Warehouse has a trash compactor room and dedicated external dock
- Warehouse has a shipping office on two levels with drivers wait area and washroom
- 167 Car parking stalls on site



Leasing Agents

Albert Maierhofer*

Executive Vice President

905.247.9232

amaierhofer@lennard.com

Brian Lynett*

Partner

905.247.9222

blynett@lennard.com

Jim O'Reilly*

Partner

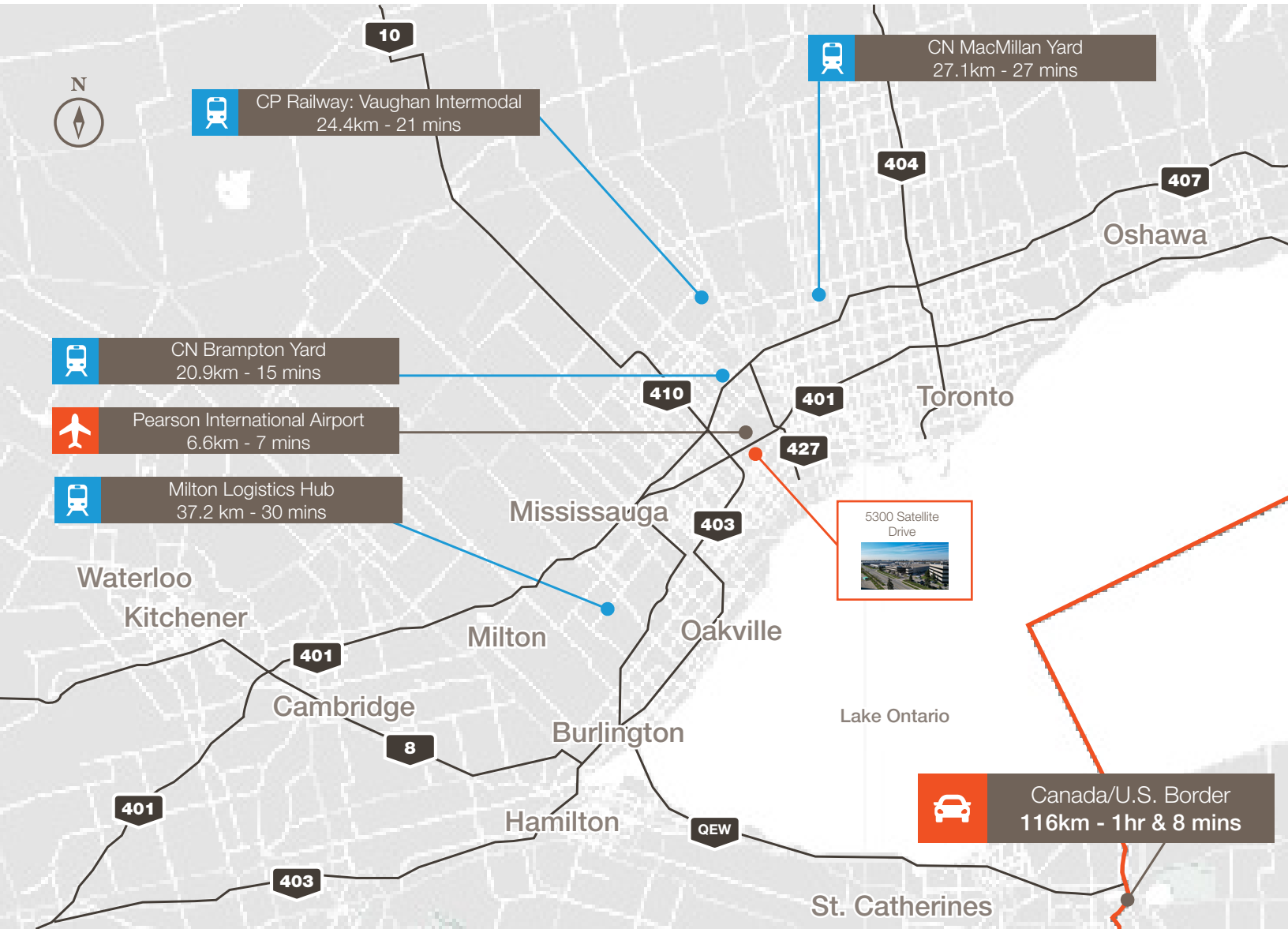
905.247.9230

joreilly@lennard.com

*Sales Representative

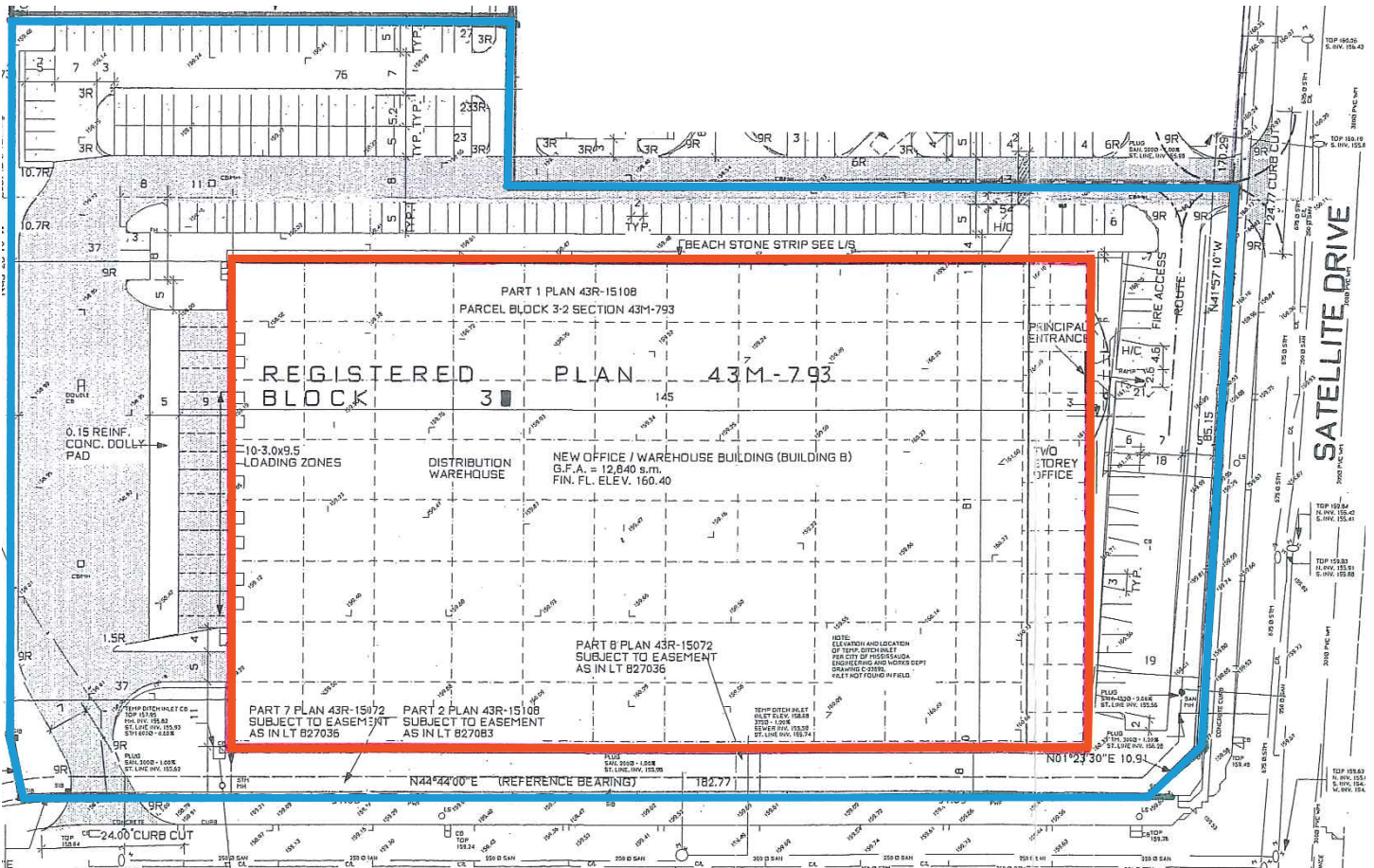
5300 Satellite Drive

Strategically located in Mississauga's most prestigious Business Park



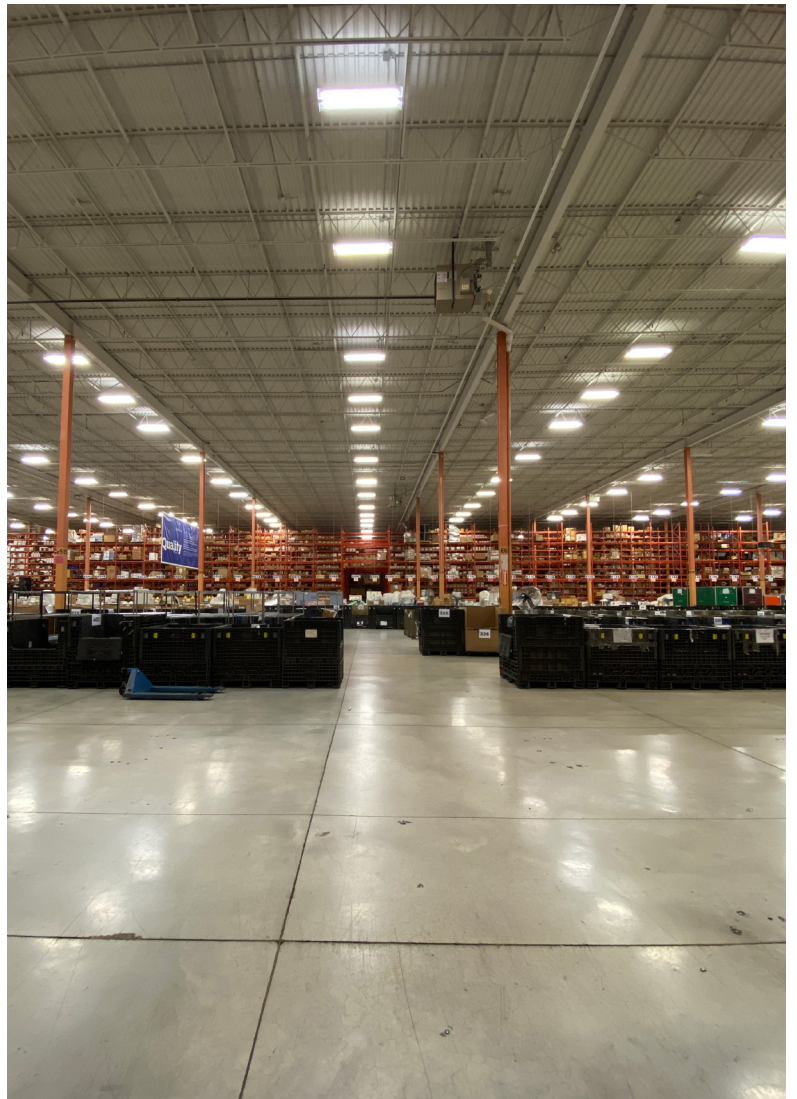
5300 Satellite Drive

Site Plan



- Building outline
- Property grounds

5300 Satellite Drive

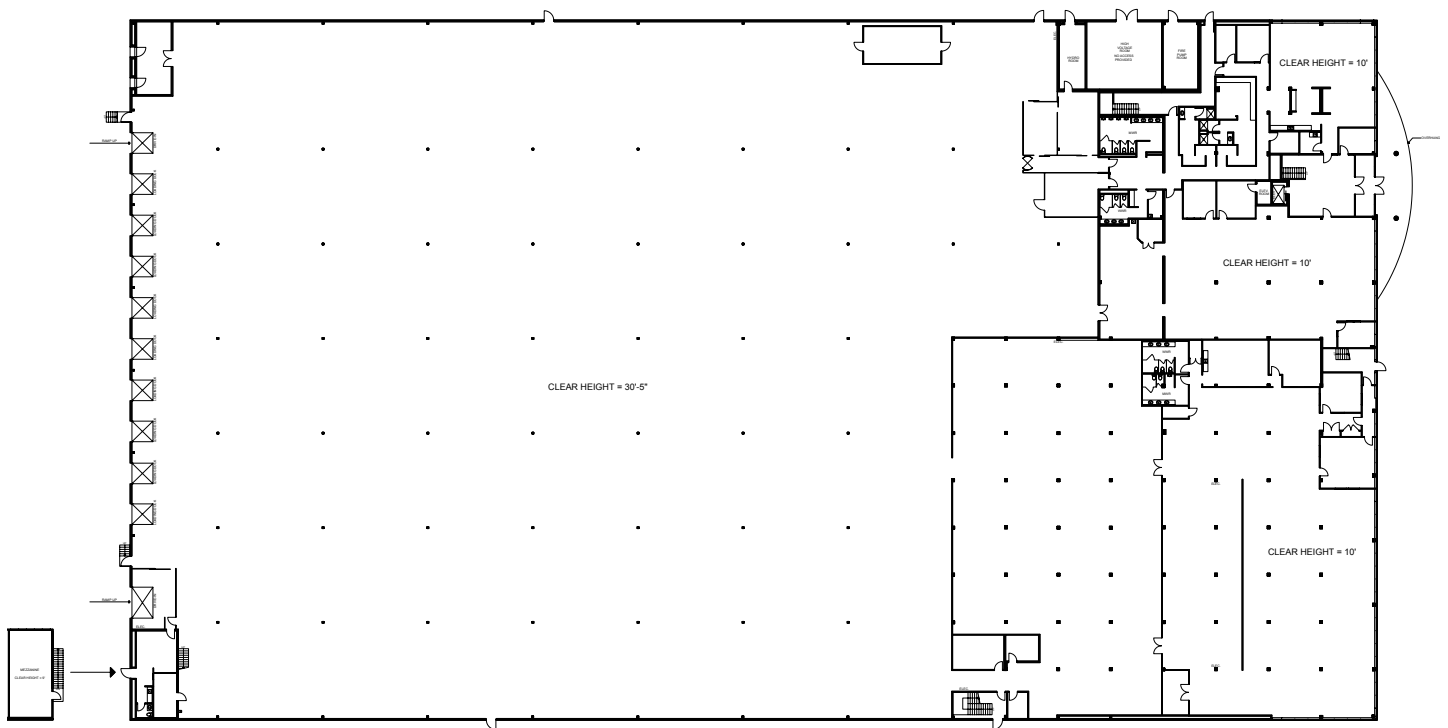


5300 Satellite Drive



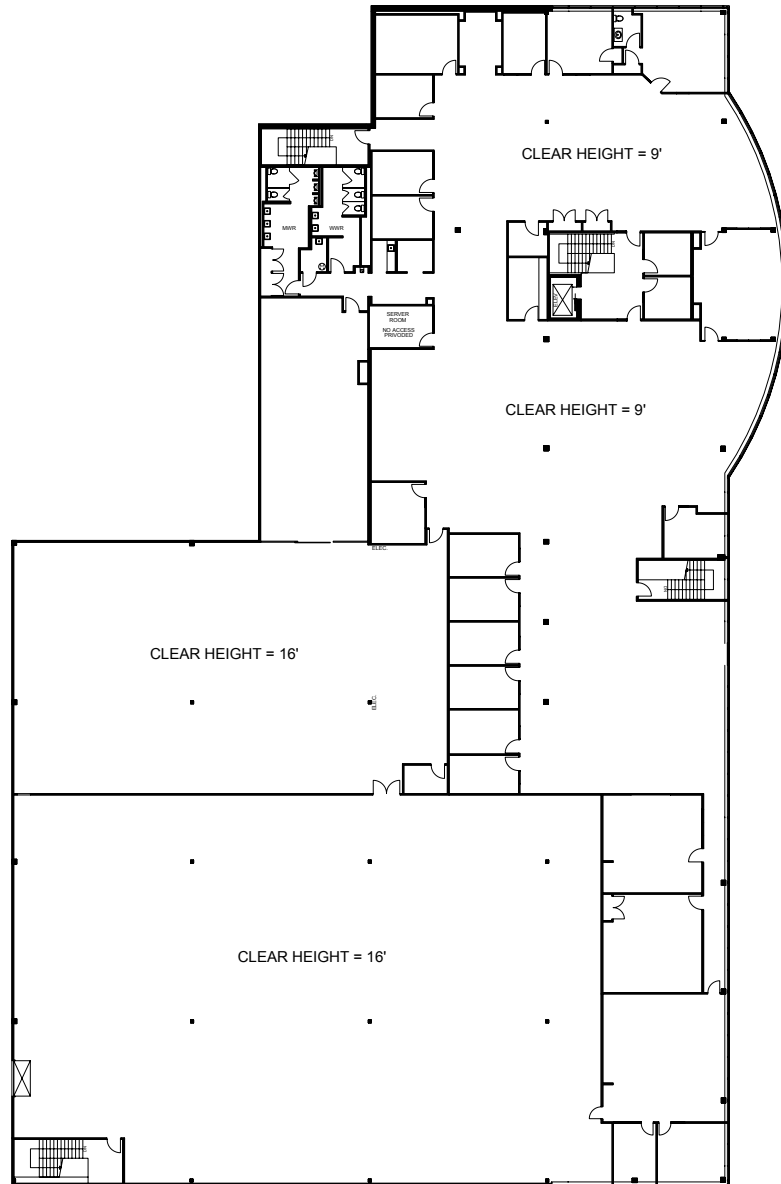
5300 Satellite Drive

Ground Floor Plan



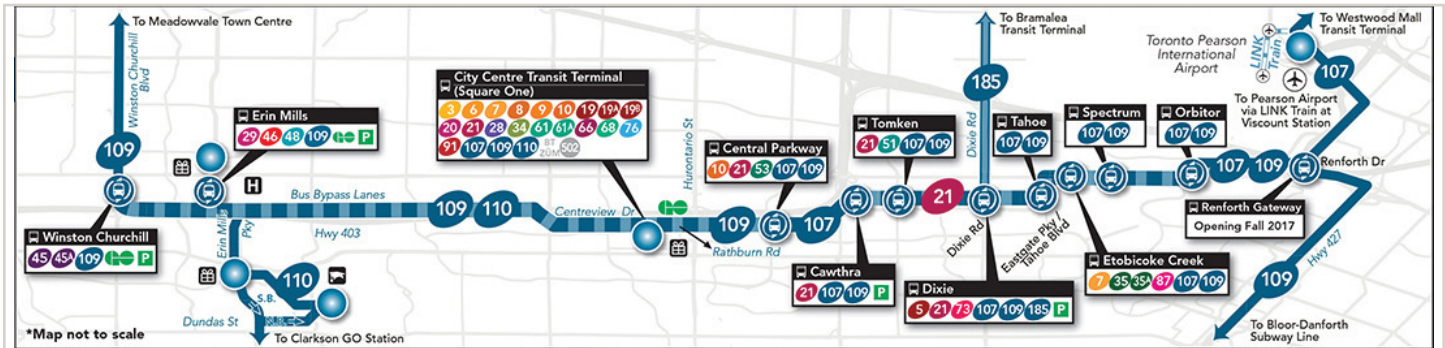
5300 Satellite Drive

Second Floor Plan



5300 Satellite Drive

Mississauga Transitway



miWAY

Mississauga Transitway

Effective May 1, 2017

- Transitway Station
- Parking
- Mississauga Transitway
- MiExpress Route All Day Service
- MiExpress Route AM/PM Rush Hour Service
- MiExpress Route
- MiLocal Route

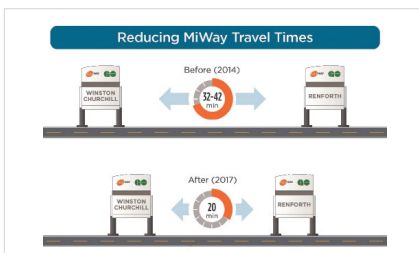
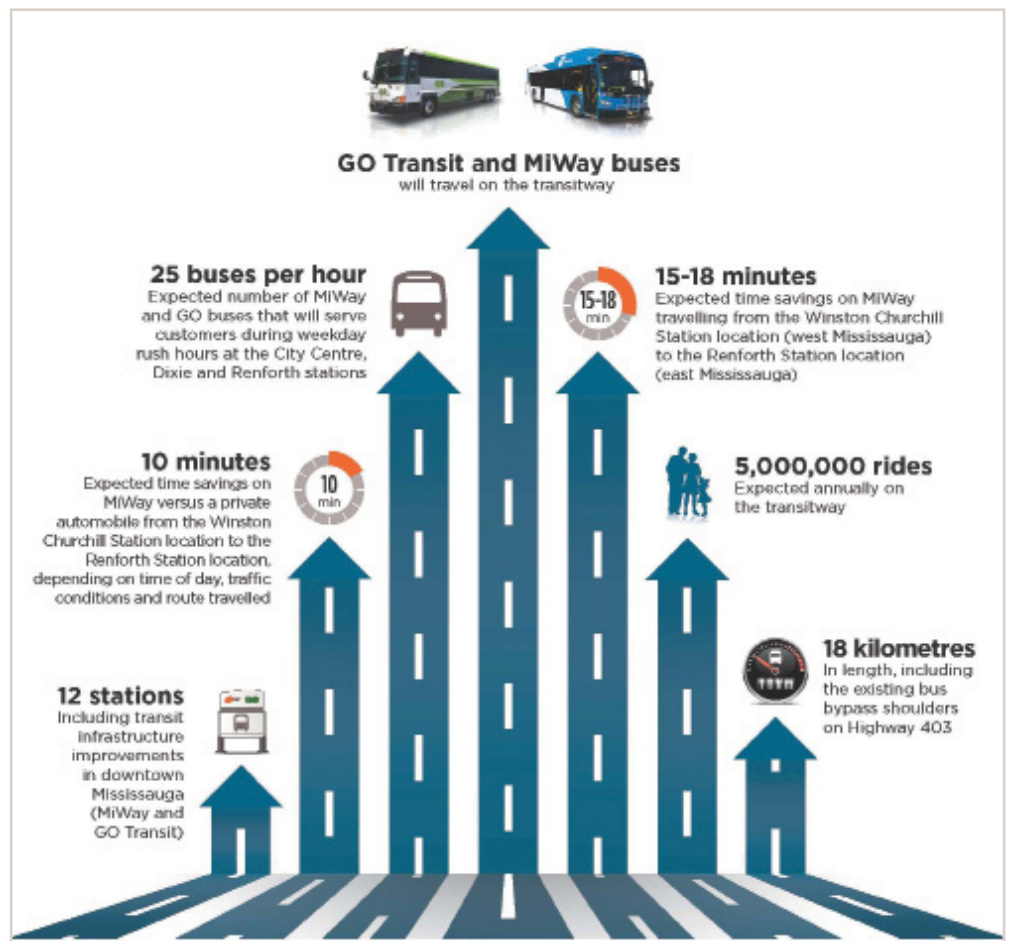


Image source: MiWay, mississauga.ca/portal/miway



5300 Satellite Drive

Amenities Map

● Property Location - 5300 Satellite Drive



Statements and information contained are based on the information furnished by principals and sources which we deem reliable but for which we can assume no responsibility. Lennard Commercial Realty, Brokerage.